

## How To Add A Digital Input To Paxton10

### Overview

Digital inputs enable you to easily monitor and report on the states of switches and buttons as well as sensors such as motion detectors. These can then be included in Custom Rules to create unique functionality in Paxton10, for example, setting a push button as a trigger to switch on a device for a set amount of time.

Digital inputs are connected to Paxton10 in three ways:

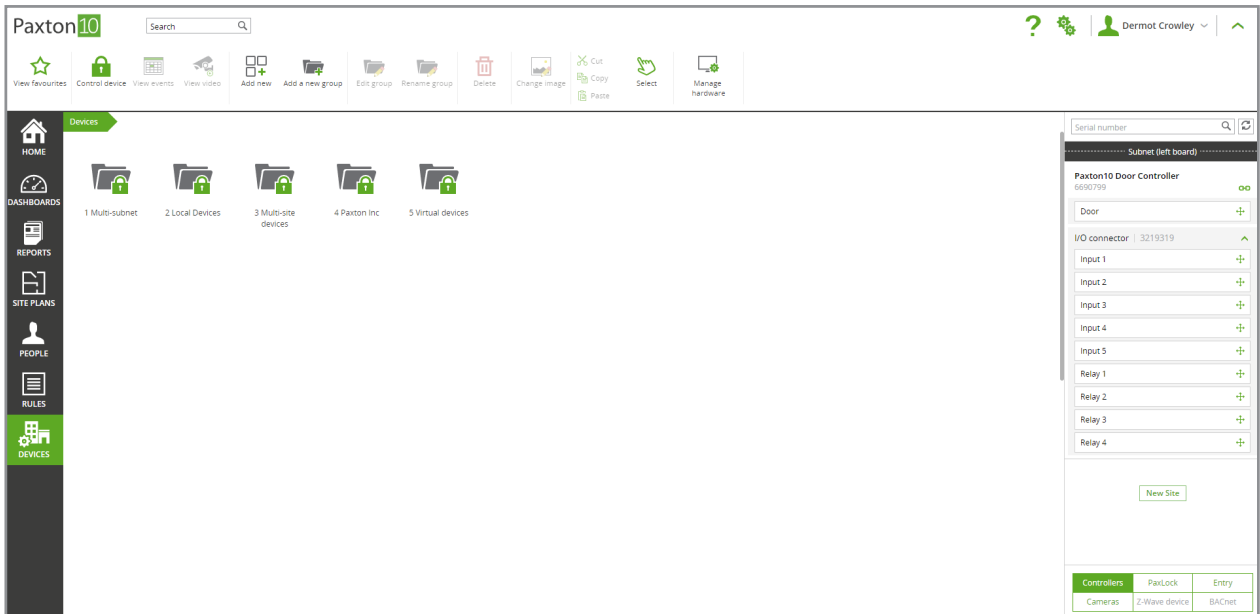
- Paxton10 Door Controller or Video Controller – Although primarily used to control access points, any unused inputs can be used to monitor digital states.
- Alarm connector – Primarily used to integrate with an alarm system, if an input is unused this can be used to monitor digital states.
- I/O connector – This connector is designed specifically for input and output devices. Any of its 5 input ports can be used to monitor digital states.

### Creating A Digital Input

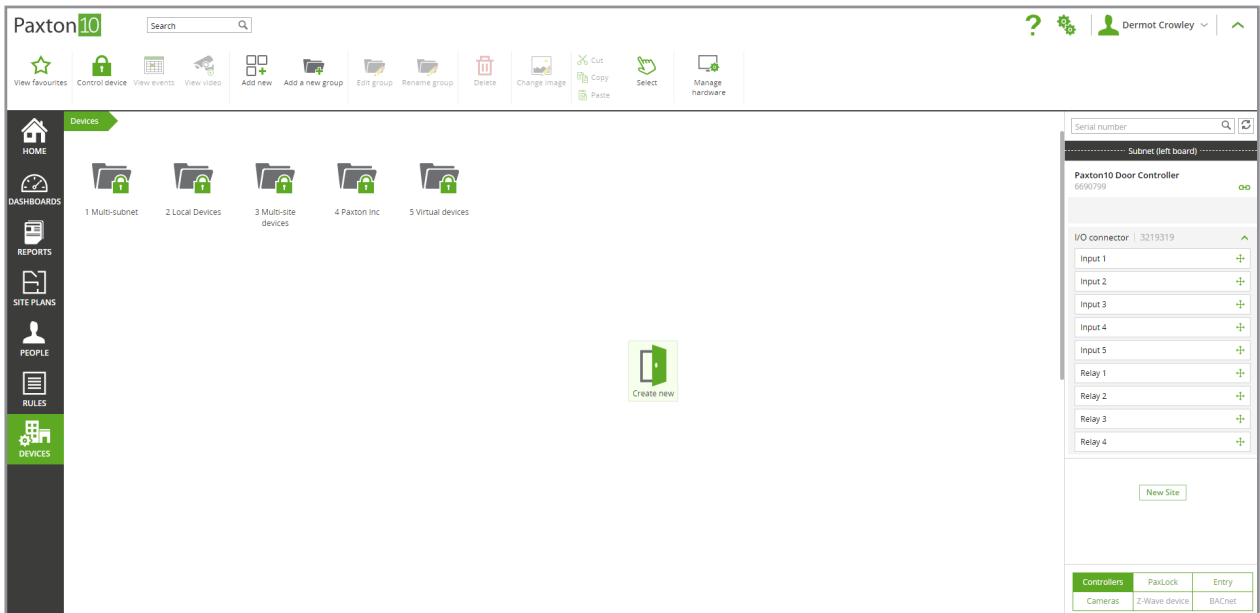
An array of digital input devices can be selected to function in Paxton10. Create a digital input in the Paxton10 system by following the steps below.

If using an I/O connector, after logging into the system:

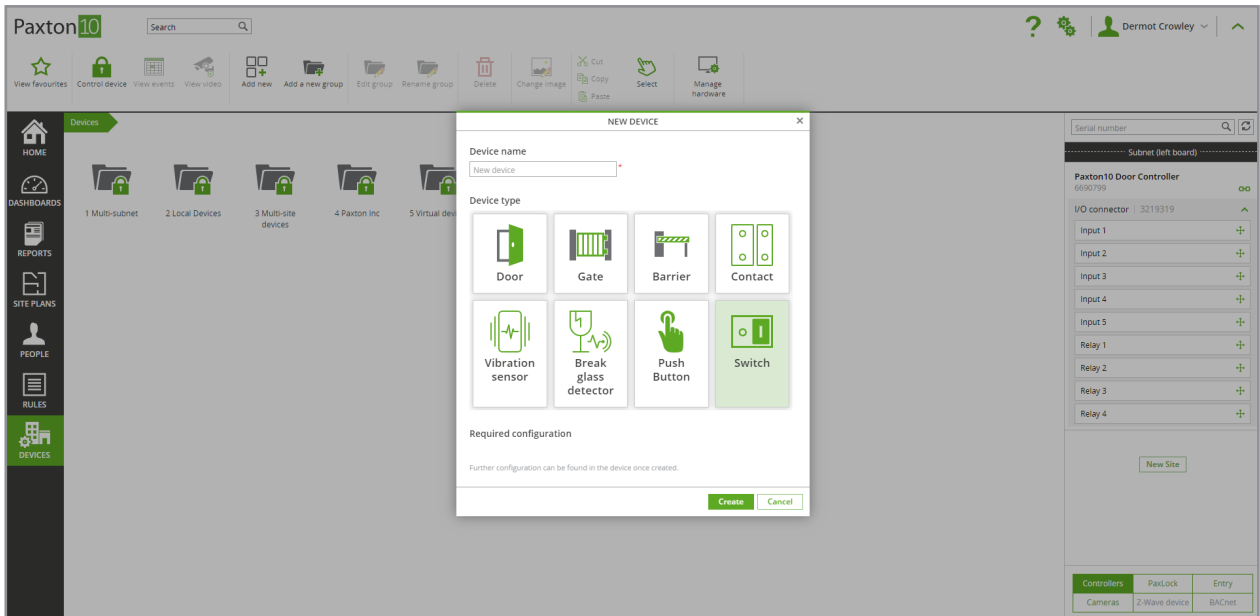
1. Navigate to the '**Devices**' section.



2. On the right-hand side of the screen, locate the I/O connector.
3. Click and drag the appropriate 'Input' over to an empty space on the left-hand side.

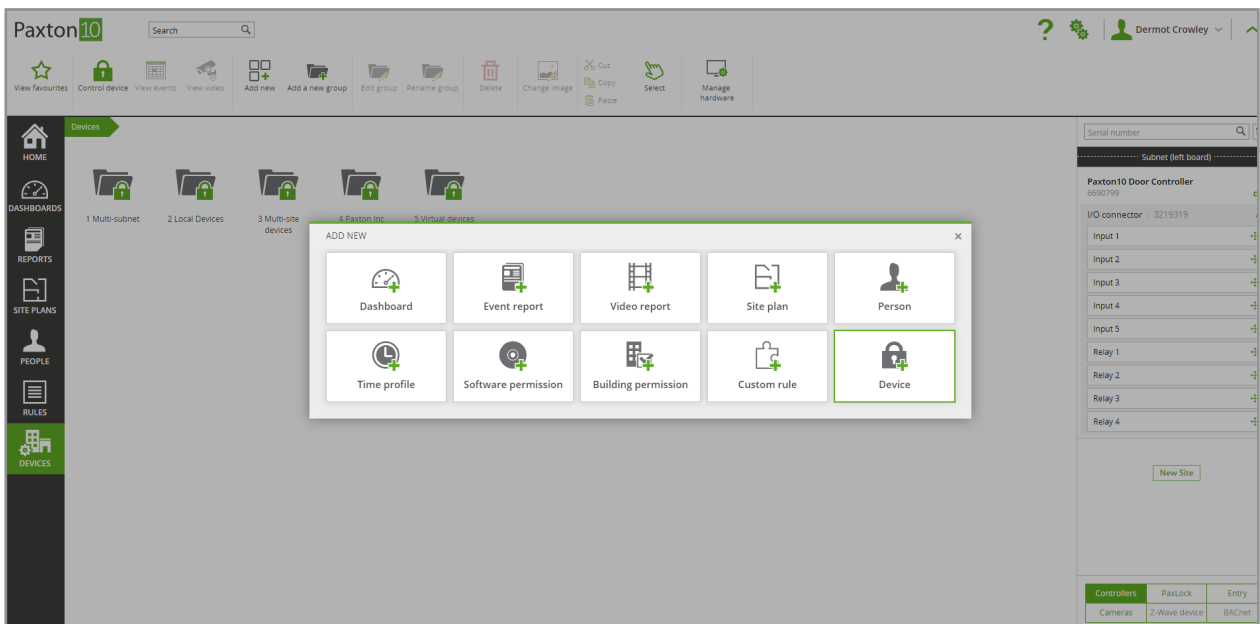


4. Give the input a name and select the device type most appropriate for what the input is monitoring.
5. Click 'Create' to finish creating the device .

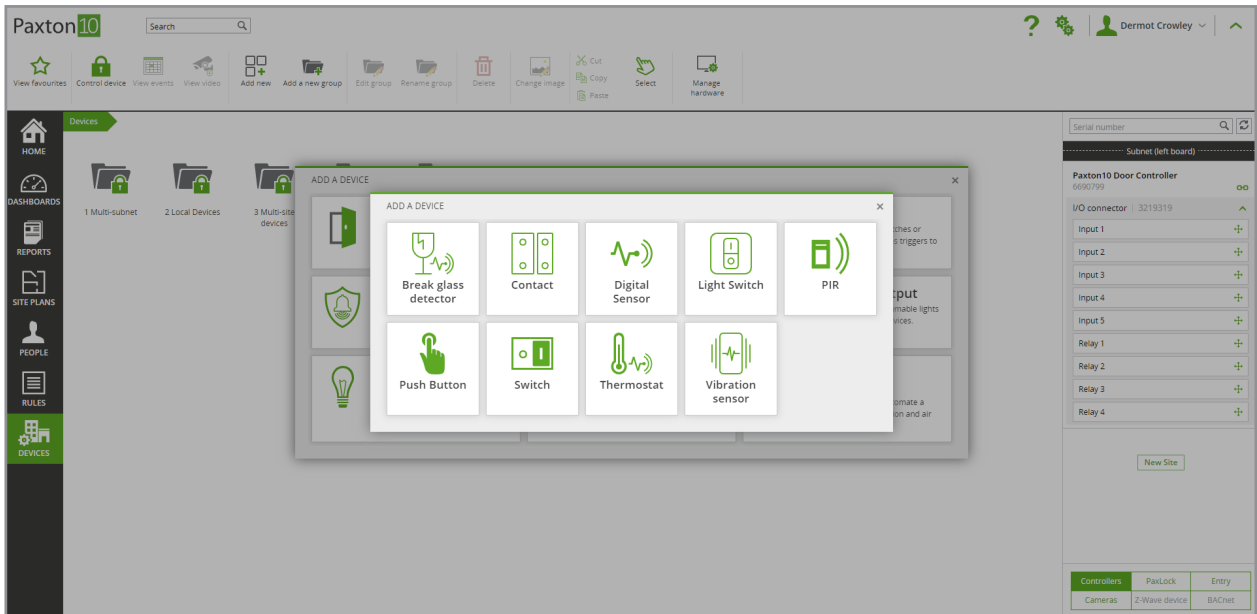


If using a spare input from a controller or alarm connector, after logging into the system:

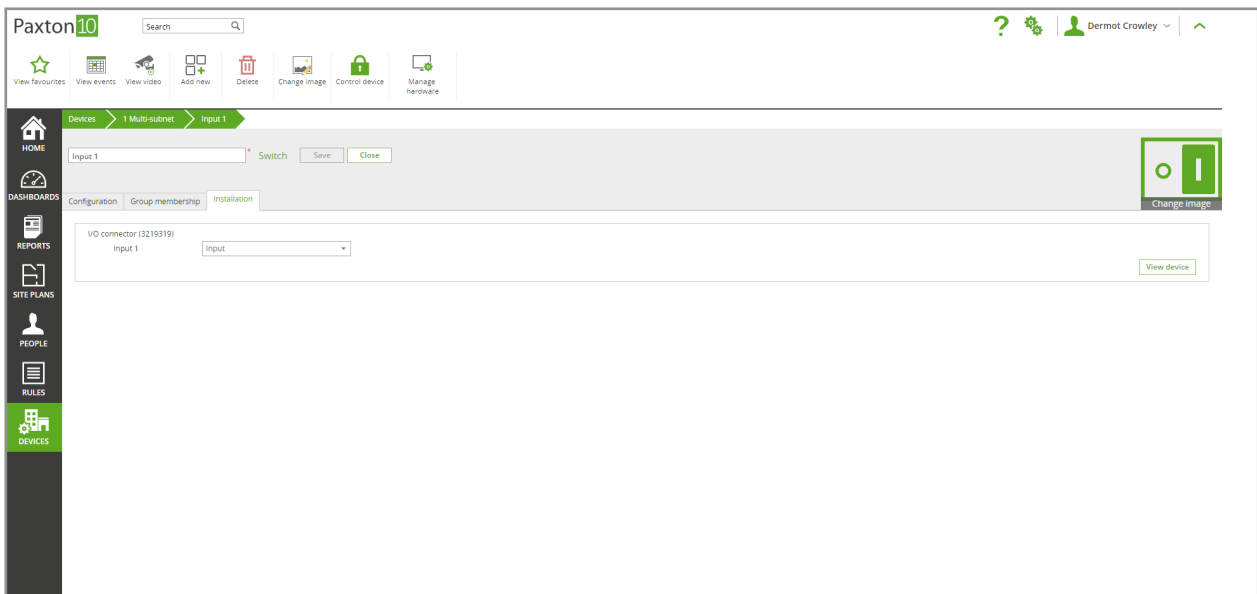
1. From the ribbon, select 'Add new'.
2. Select 'Device'.



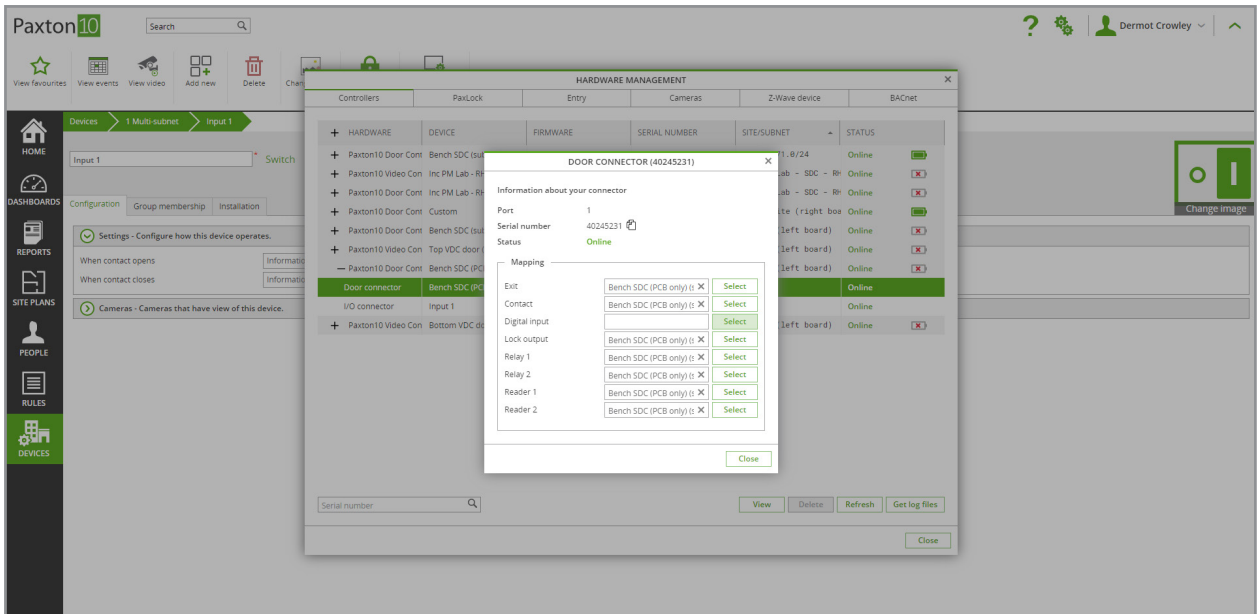
3. Select 'Digital Input' and choose the type of device most appropriate for what the input is monitoring.



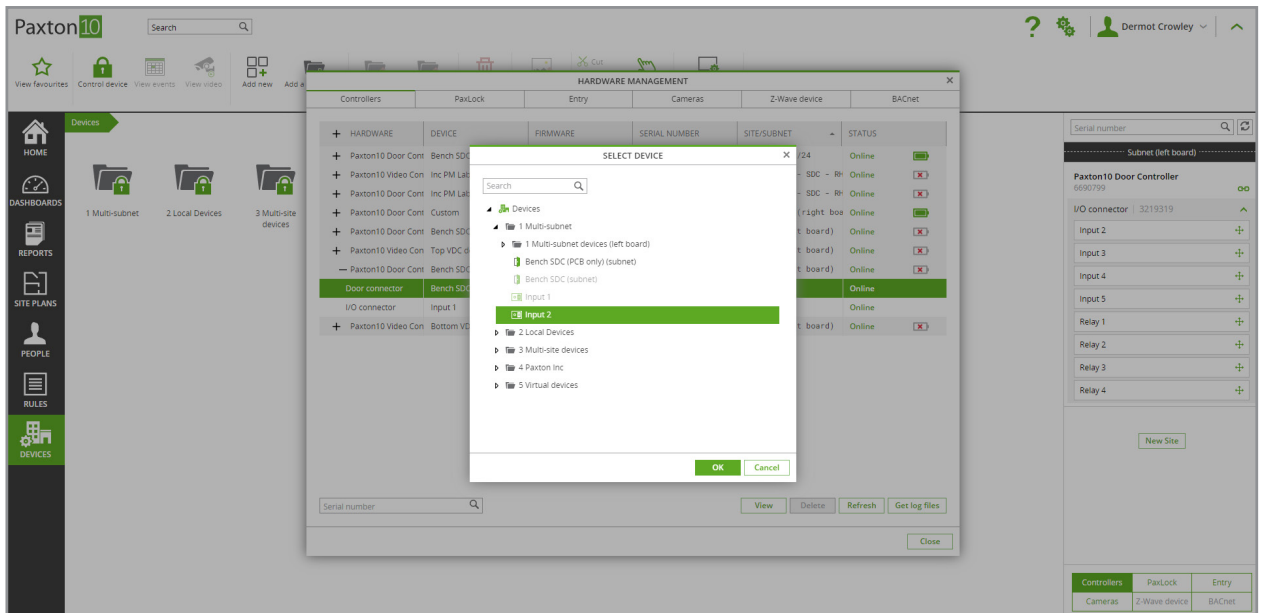
4. Give the device a name and click **Save**.
5. Under the **'Installation'** tab for the device, select **'Manage hardware'** on the right-hand side of the screen.



6. Select the controller or connector the device is physically connected into and click **'view'**. Click **'Select'** on the input the device is using.



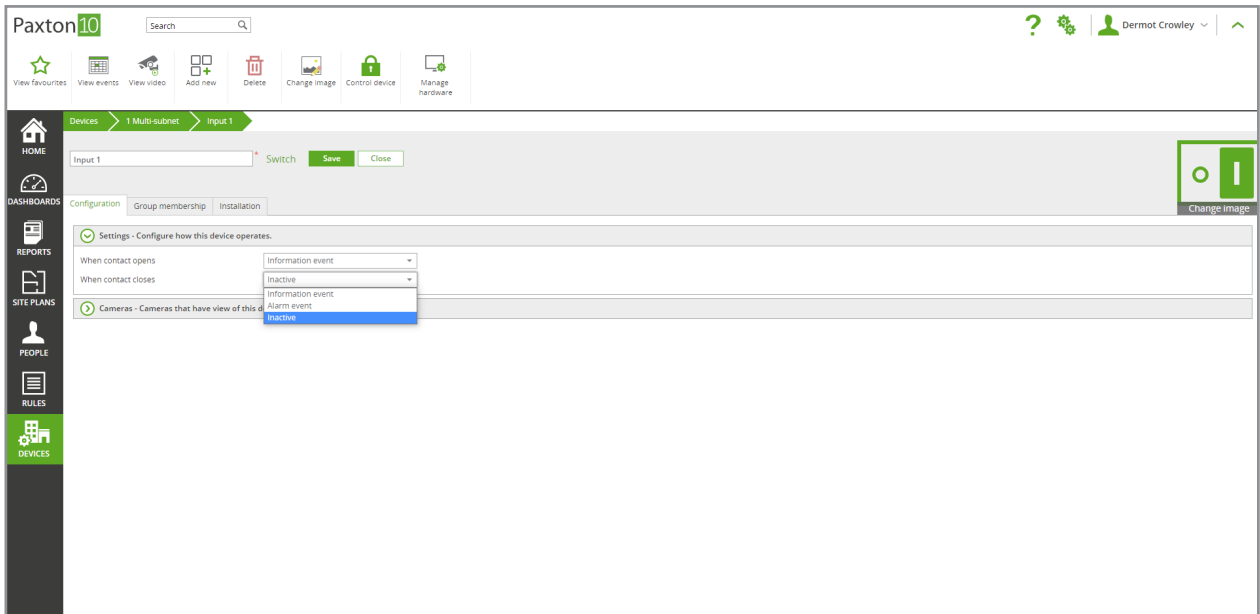
7. Select the newly created device from the list and click 'OK'.



## Digital Input Configuration

Within the device, on the configuration tab, choose how the device operates in the 'Settings' section.

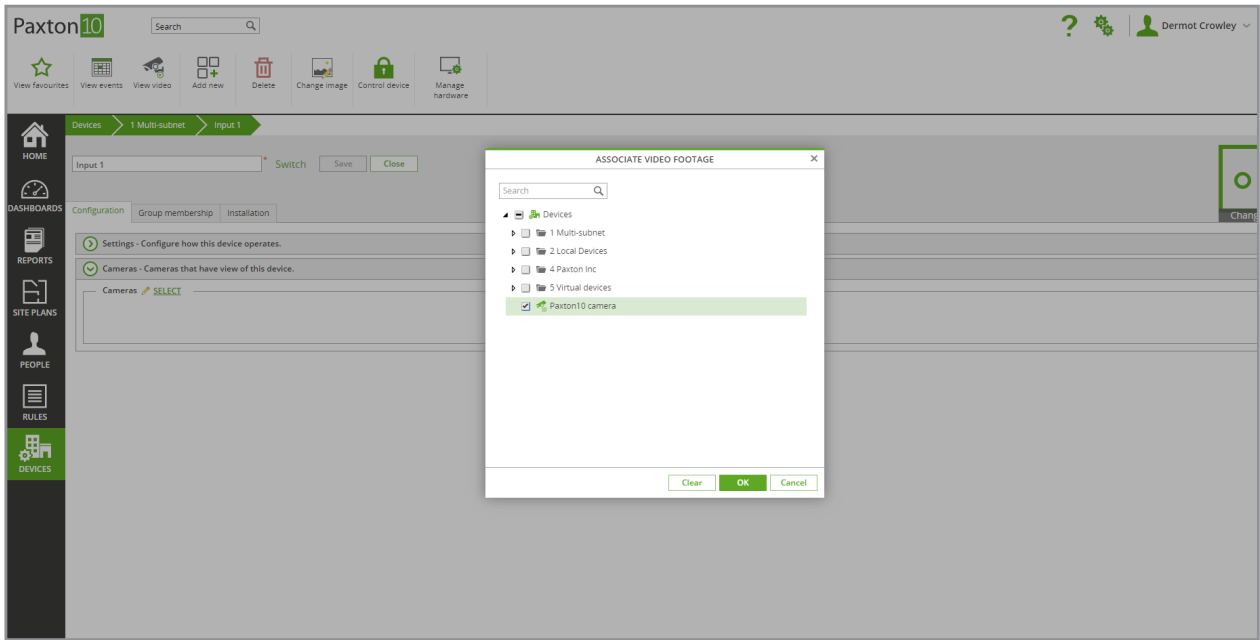
Choose whether an information event or alarm event is raised when the input changes state to open or closed. An alarm event will require acknowledgement from a user when it occurs. Choose 'inactive' to prevent an event being raised – without an event, the input may still be used to trigger Trigger and Action rules.



Select cameras that have view of the device in the 'Cameras' section.

Click 'SELECT', choose the relevant camera and select 'OK'.

Associating cameras with the device will enable video footage to be provided for each event that occurs.



On the 'Group membership' tab, choose which group(s) the device belongs to. Click 'SELECT', choose the relevant groups and select 'OK'.

On the 'Installation' tab, view the hardware for the device. Click the 'Manage hardware' button to make changes to the mapping of the device.

## Using a Digital Input

Digital inputs have a range of uses, such as:

- Additional door Exit buttons
- PIR motion detectors
- Tamper switches
- Window and door contacts
- Momentary buttons or switches

In addition to generating an event when the input changes state, and displaying their current state on site plans and dashboards, digital inputs can also be used to trigger Trigger and Action rules, meaning they can be used to action other devices or generate reports.