

How to Save Video Footage to Network Attached Storage (NAS)

Overview

Network attached storage (NAS) enables data to be stored safely at a central location on a local area network. This data can then be accessed easily by any authorised users that are connected to the network. Paxton10 provides the option to save video footage from Paxton10 cameras to a NAS system rather than to the camera's memory card. Paxton10 also enables video footage from 3rd party cameras to be saved in this way via the Paxton10 Video Controller.

Supported Network Protocols

Paxton10 utilises CIFS/SMB – the Common Internet File system / Server Message Block protocol to share data with a NAS system. The protocol dialects supported differ for Paxton10 cameras and the Paxton10 Video Controller.

Paxton10 Video Controller supports:

Protocol Dialect
LANMAN 1.0
LANMAN 2.0
SMB 1.0 (also known as NT1)
SMB 2.0
SMB2_02 (sub-protocol)
SMB2_10 (sub-protocol)

Paxton10 camera supports:

Protocol Dialect
LANMAN 1.0
LANMAN 2.0
SMB 1.0 (also known as NT1)
SMB 2.0 (Paxton10 Pro and Core cameras only)

The Paxton10 Video Controller will attempt all protocol dialects up to and including SMB2_10 to establish connection to your selected NAS system. Paxton10 Pro and Core cameras will attempt all protocols up to SMB 2.0.

NAS System Settings

To establish a connection to your NAS system, you may need to ensure the minimum and maximum protocol dialects specified in the settings of your NAS system are within the ranges that the Paxton10 devices support. For example, the minimum protocol dialect will need to be set no higher than SMB 2.0 for Paxton10 Pro and Core cameras, or SMB 1.0 for the older Paxton10 camera models to establish a connection.

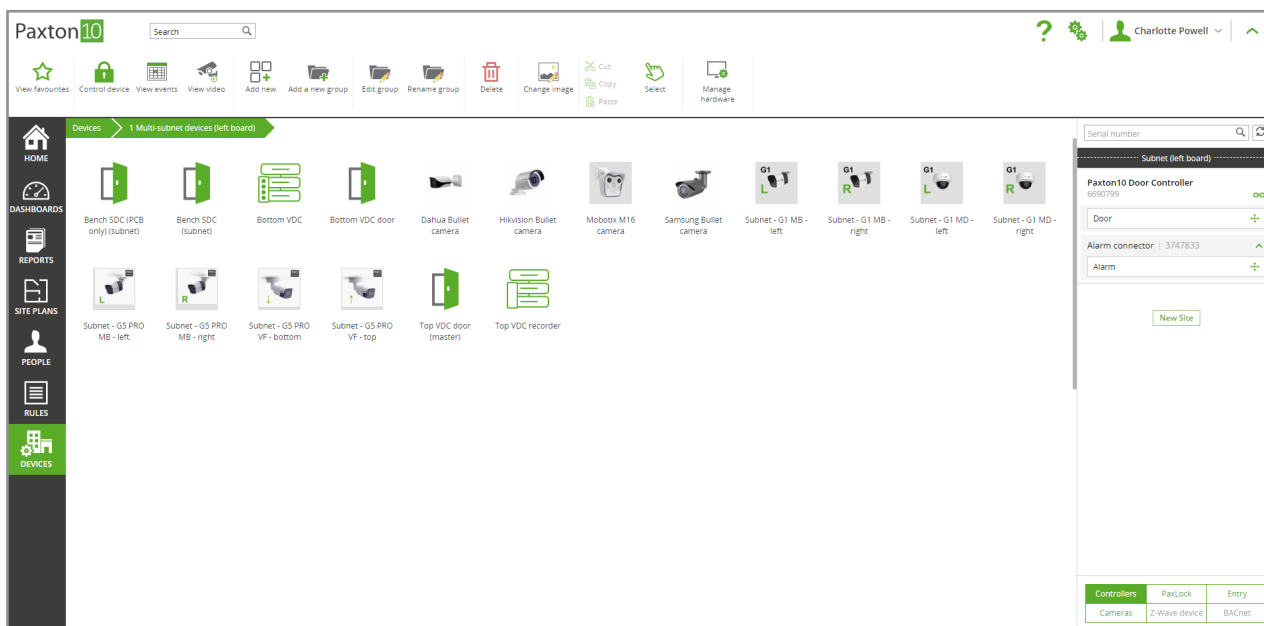
A dedicated folder must be set up within the NAS system for each Paxton10 camera. This folder will be formatted when Paxton10 establishes connection with this location, and any existing data in the folder will be erased (Paxton10 will only erase data from the selected location and will not format the entire drive).

When setting up either a Paxton10 camera or a 3rd Party camera with a NAS, the max disk space must be set to 2TB or lower.

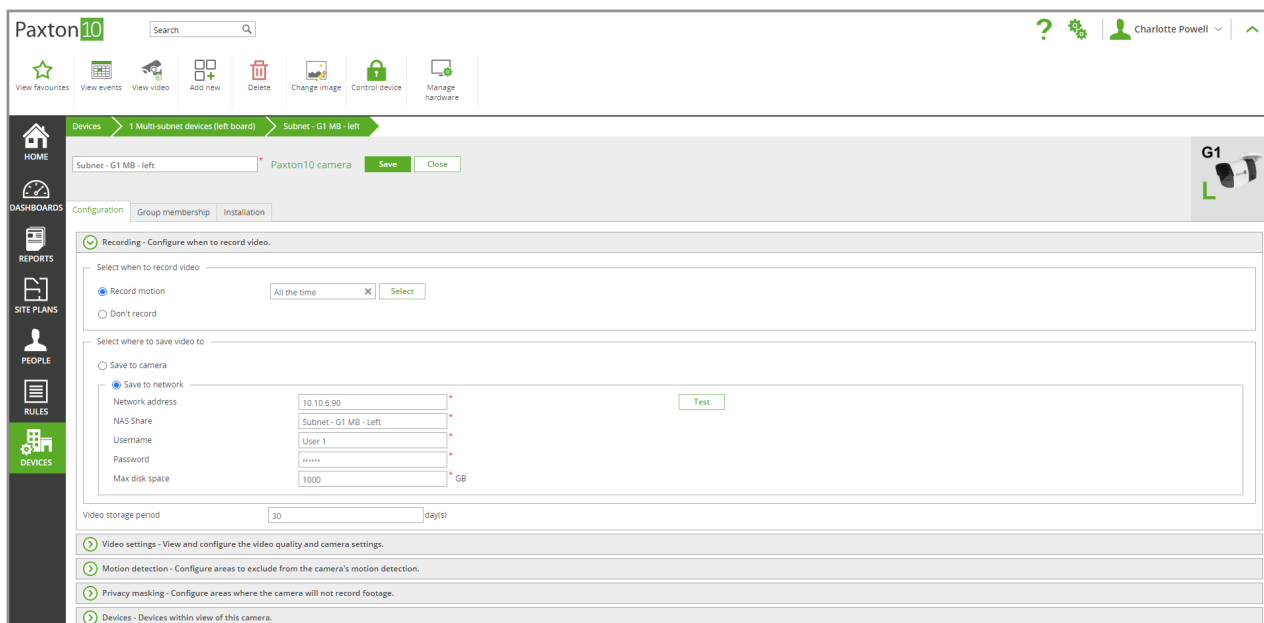
Saving Paxton10 Camera Video Footage to a NAS System

For information on adding a camera to Paxton10, see APN-0034-US - How to add a camera to Paxton10 < www.paxton.info/5645 >

1. In the Paxton10 software, navigate to 'Devices' and select a Paxton10 camera.

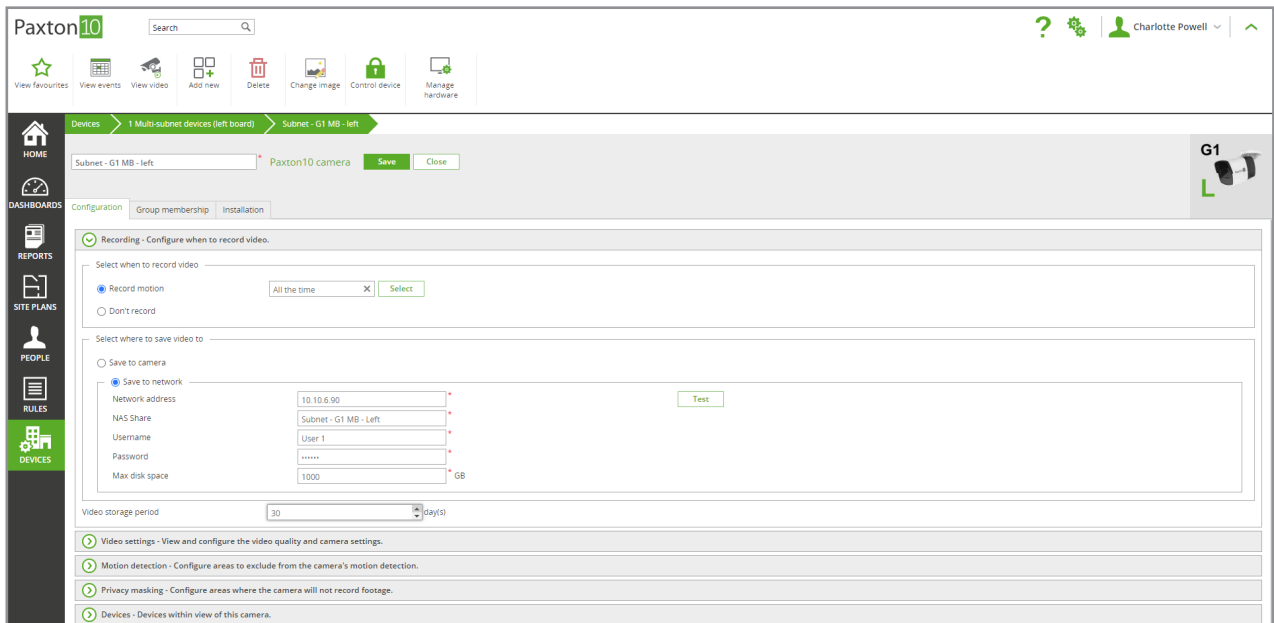


2. Select the 'Configuration' tab. In the 'Recording' section, select 'Save to network' and add your NAS system's details.



'Network address' refers to the NAS system's IP address and 'NAS Share' refers to the storage folder that you wish to save data to (the folder's exact name).

3. Test the connection by selecting 'Test'.
4. Choose the number of days that video footage should be stored for. The maximum is 90 days.

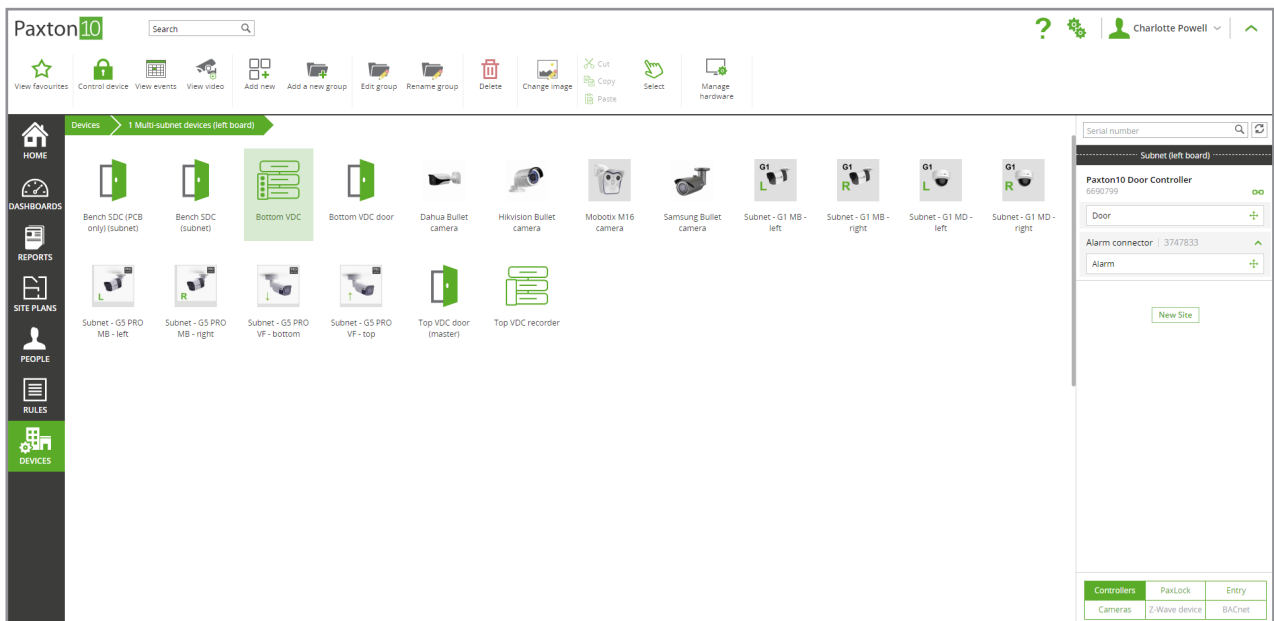


Saving 3rd Party Camera Video Footage to a NAS System

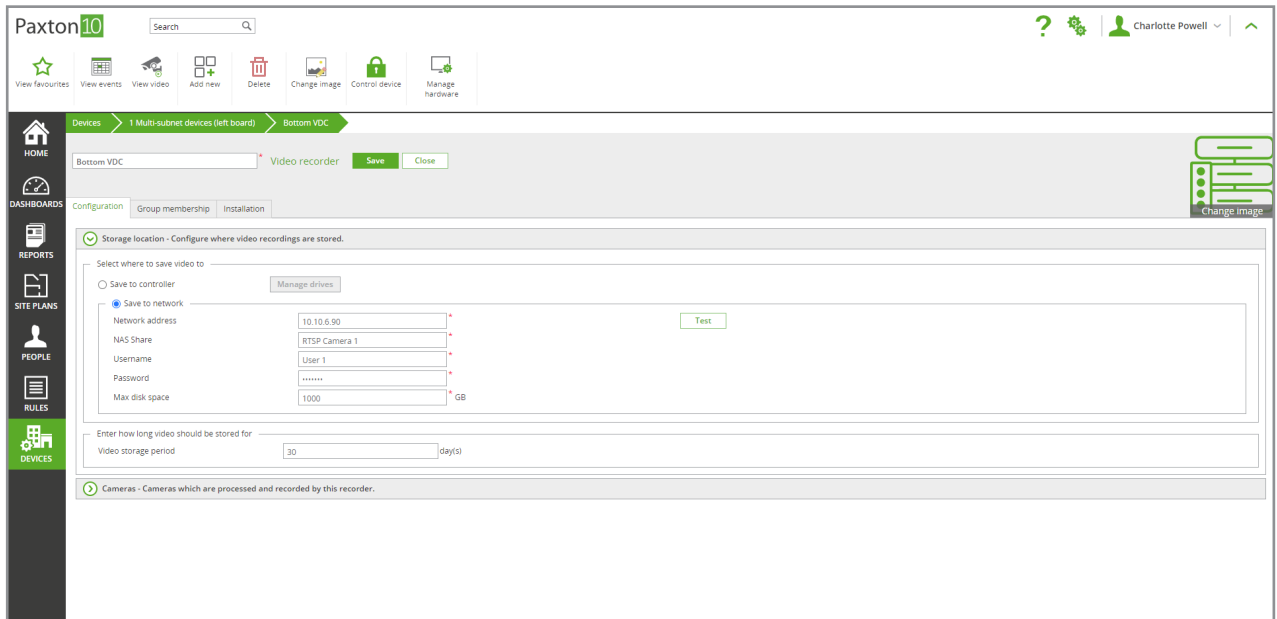
Third-party cameras must be associated with a video recorder (a Paxton10 Video Controller) for their video to be processed in Paxton10. For information on adding a 3rd party camera to Paxton10, see APN-0034-US - How to add a camera to Paxton10 < www.paxton.info/5645 >

A dedicated folder should be set up within the NAS system for Paxton10 video footage.

1. In the Paxton10 software, navigate to 'Devices' and select the video recorder (Paxton10 Video Controller) that the 3rd party camera is associated with.



2. Select the 'configuration' tab. In the 'Storage location' section, select 'Save to network' and add your NAS system's details.



'Network address' refers to the NAS system's IP address and 'NAS Share' refers to the storage folder that you wish to save data to (the folder's exact name).

3. Test the connection by selecting 'Test'.
4. Choose the number of days that video footage should be stored for. The maximum is 90 days.

