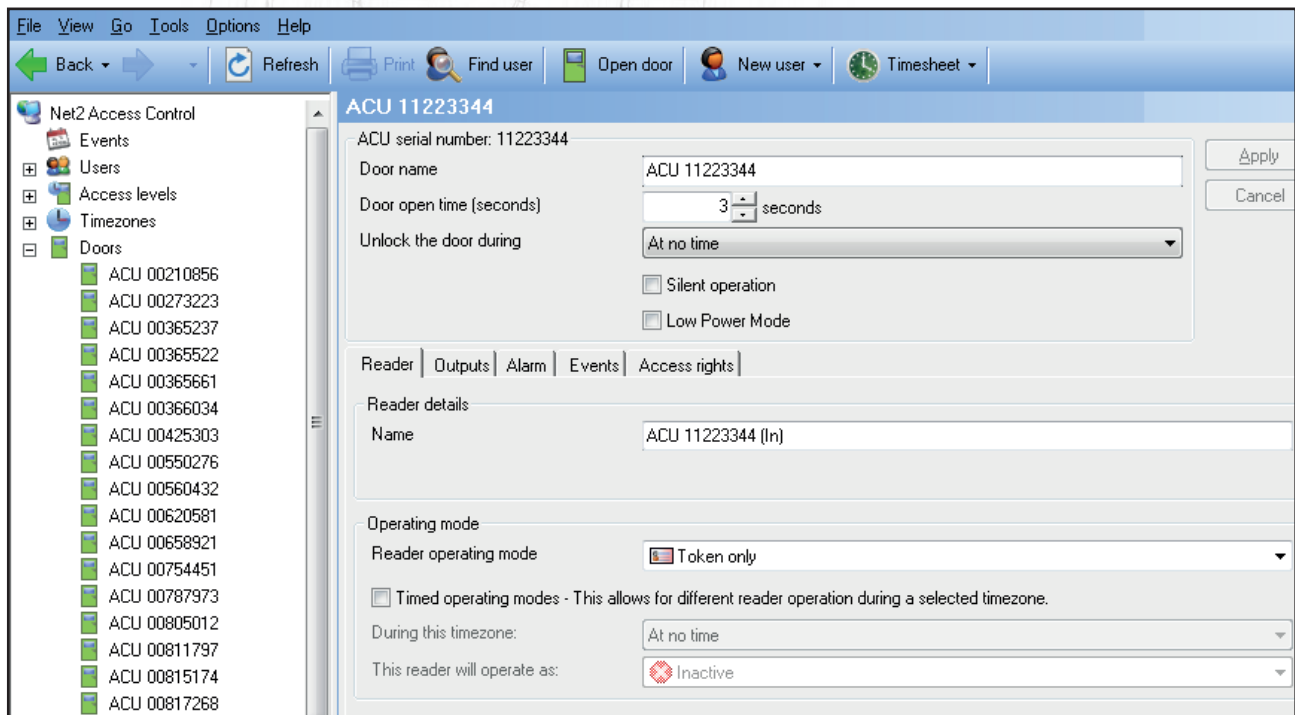


Configuring a Net2 Paxlock US

Overview

Following the installation and binding of a Net2 Paxlock US to the Net2 Software, configuring the unit is extremely simple.

Double clicking on the specific door in the doors tab within Net2 will open up the door configuration window. Here, a selection of changes can be made to the door to configure the unit as appropriate.



Door name: Name the Door.

Door open time: Set the door open time.

Unlock the Door during: Holds the door unlocked during this timezone. - Set to 'At No Time' for normal user operation.

Reader: Local settings for the reader.

Output: Configures the lock for timed release or toggle mode.

Alarm: Enables/Disables the door alarm functions. (requires contact switch)

Events: Shows the events for this control unit only.

Access Rights: Lists users who have access through this door.