



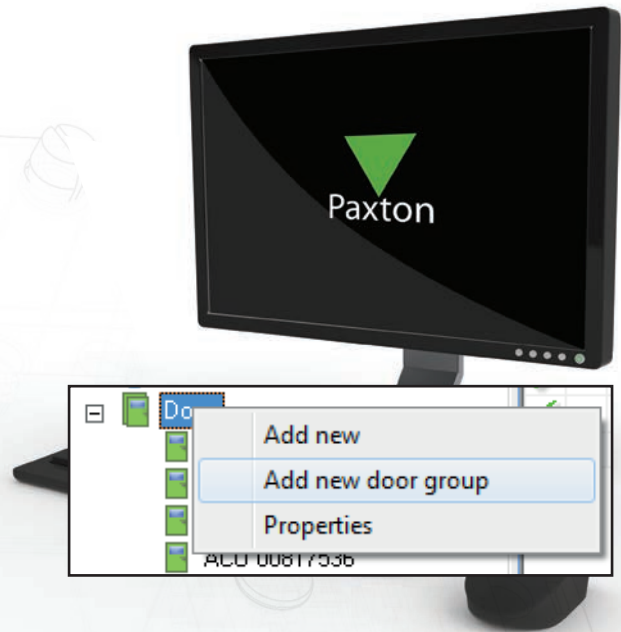
Using Door Groups

Using Door Groups

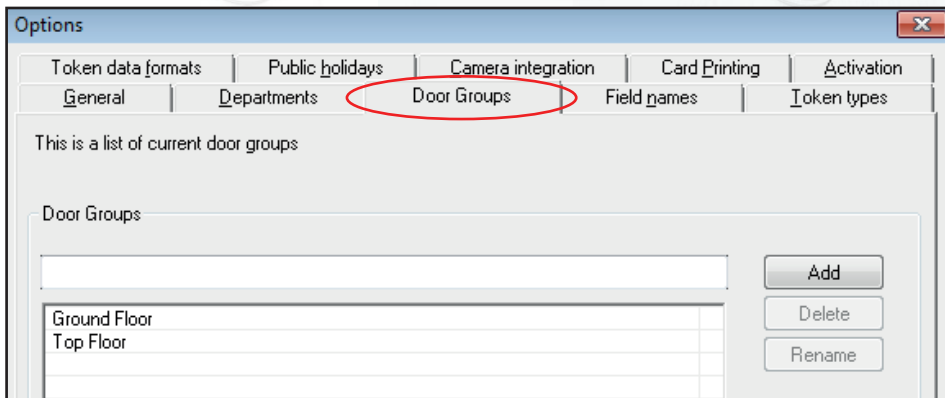
Door Groups allow doors to be viewed or edited in one action. This is particularly useful when there are a large number of doors on the system. Requires Net2 v4.24 or later software.

Door Groups can be created and edited by:

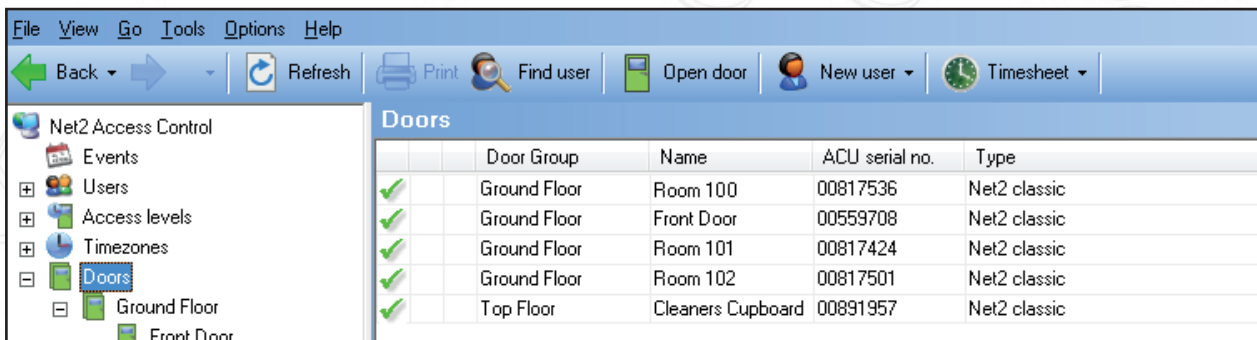
-  Right Click on Doors in the tree view
-  Through the Options menu



Go to the Door Group tab and add any necessary groups.



Groups will be displayed as an extra column in the main display windows. It is possible to drag and drop doors into a door group.



Properties can be changed for a whole group by right clicking on the relevant group in the tree view and selecting Properties. This will allow you to set and change parameters for all group members. Examples include:

Door Open Time, Unlock the Door during, Reader Details, Reader Operating Mode