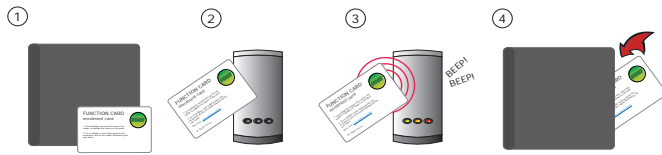


Initialising a new system



1. Take the enrolment card from the new pack.
2. Present the enrolment card to the reader.
3. The reader beeps and the LED's light up.
4. ALL USERS ARE NOW VALID. Return enrolment card to pack.



Adding another pack to an existing system

If a keyfob pack is being added to a system the Enrolment card from an existing keyfob pack must first be presented, followed by the enrolment card from the new pack.

Issuing keyfobs



Keyfob - give to user

Shadow card - write name of user on this card

Each user has a matching pair of tokens.
DO NOT MIX UP THE PAIRS

The keyfobs are provided in plastic pouches to keep each keyfob with its associated Shadow card. This card wallet is provided to store the Shadow cards once the keyfobs have been issued.

WARNING: Do not deal with more than one user at the same time. The security and administration of your system will be seriously compromised if unmarked cards become mixed up.

Bar a user

Take the matching shadow card and present it to each reader on your site. The user keyfob is now barred.

A barred keyfob can be re-validated by presenting an active enrolment card followed by the user keyfob to the reader.

This device complies with Part 15 of the FCC Rules. Operation is subject to the following two conditions:
(1) this device may not cause harmful interference, and
(2) this device must accept any interference received, including interference that may cause undesired operation. Changes or modifications not expressly approved by the party responsible for compliance could void the user's authority to operate the equipment.