


# Ins-30093-US PROXIMITY vandal proof compact reader

## Technical Support


 1.800.672.7298


 [supportUS@paxton-access.com](mailto:supportUS@paxton-access.com)


Technical help is available: Monday - Friday from 02:00 AM - 8:00 PM (EST)

Documentation on all Paxton products can be found on our web site - <http://www.paxton-access.com/>

## Suitability

Security sensitive doors 

Mounted on metal surface 

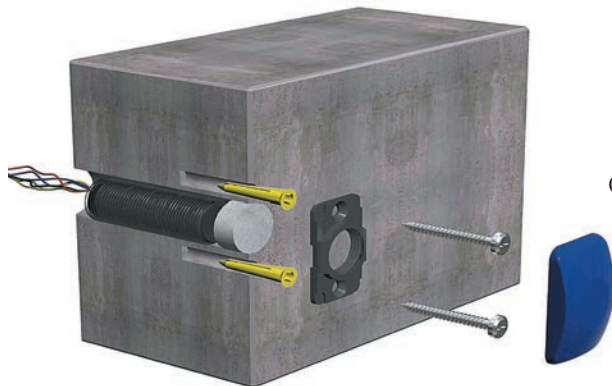
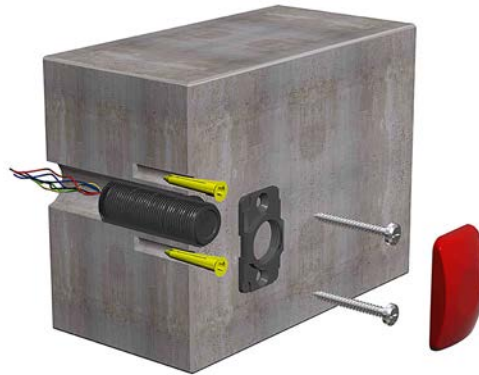
Wet environments 

Readers mounted together

**12 inches**  
between readers

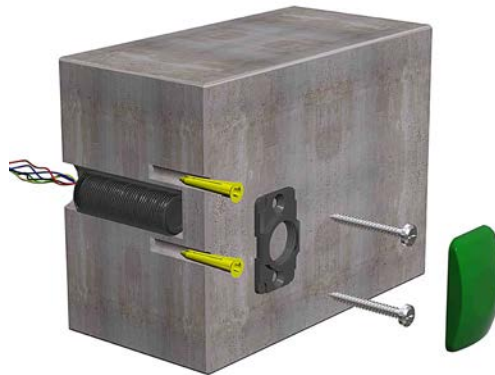
## Mounting

Open hole - medium vandal resistance



Cement plug - high vandal resistance

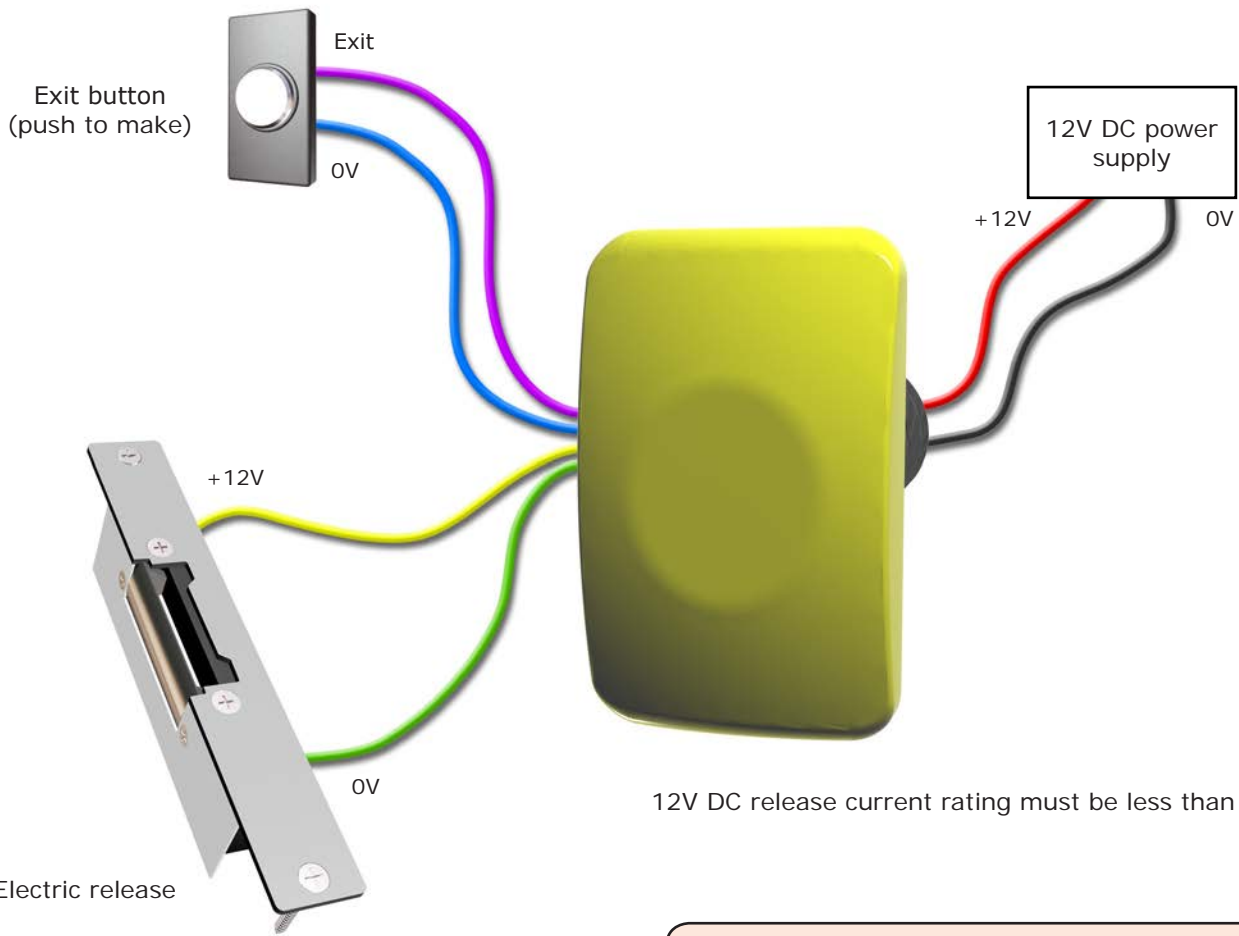
Blind hole - very high vandal resistance



## FCC Compliance

This device complies with Part 15 of the FCC Rules. Operation is subject to the following two conditions:

(1) this device may not cause harmful interference, and (2) this device must accept any interference received, including interference that may cause undesired operation. Changes or modifications not expressly approved by the party responsible for compliance could void the user's authority to operate the equipment.



12V DC release current rating must be less than 1A.

### Wire outputs



### Reset - Use 1 method

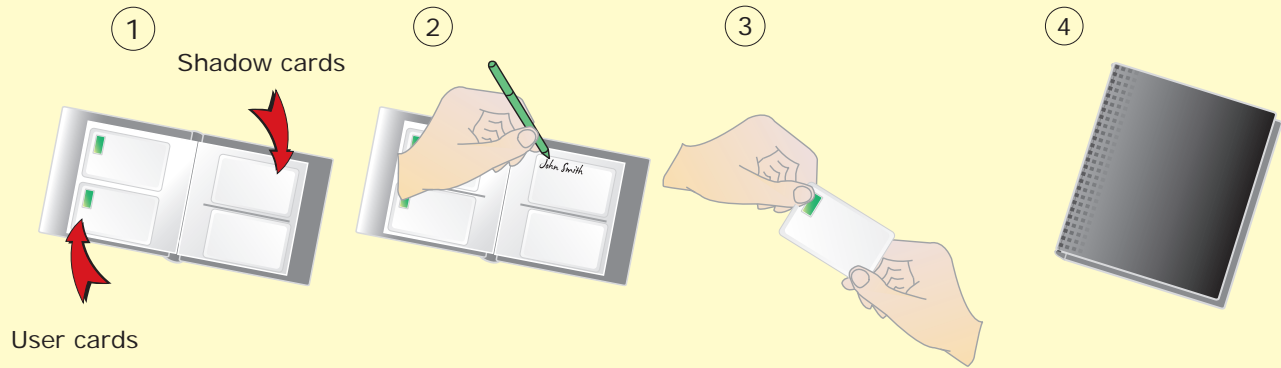
1. Power down the unit.
  2. Press and hold the exit button.
  3. Power up the unit. It will give several quick beeps.
  4. Wait for a further beep and then release and press the exit button twice more.
  5. The reader will beep 3 times.
- OR
1. Present Enrolment card.
  2. Present Door open time card twice.
  3. Present Enrolment card.
  4. Present Door open time card twice.
  5. WAIT FOR 5 SECONDS

### Enrolment Card - must be presented when the system is first powered on



1. Take the enrolment card from the new pack of user cards
2. Present the enrolment card to the reader
3. The reader will beep as the enrolment card is acknowledged
4. All cards in the pack are now valid. The enrolment card can now be returned to its pack.

## Issuing tokens



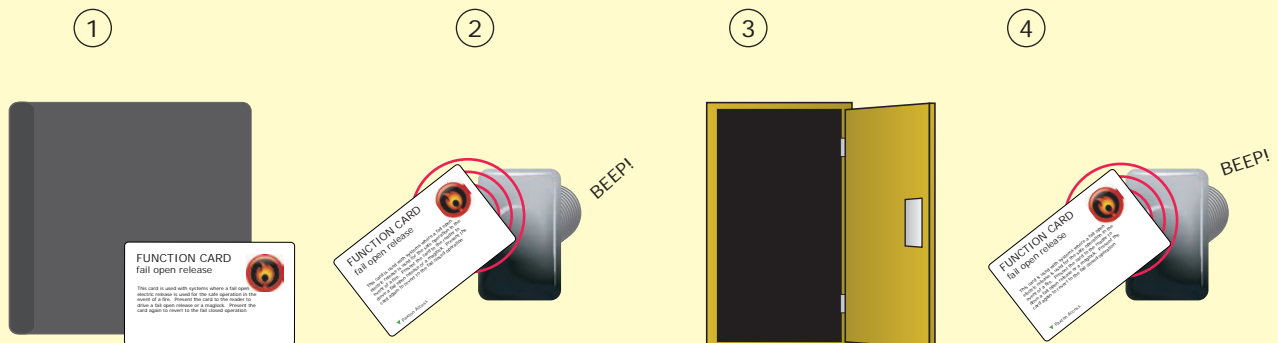
1. Across each double page there are 'pairs' of cards - a 'User card' and a corresponding 'Shadow card'.
2. Write the name of the user on the shadow card.
3. Take the user card from the opposite pouch and issue to the user.
4. Keep the card pack containing the shadow cards in a safe place.

## Bar a user



1. When a card is lost or stolen it is important to bar the card from your system to avoid unauthorized access.
2. To bar a card or token take it's corresponding shadow card from the card pack.
3. Present the shadow card to the reader. This will remove the lost card or token from your system.
4. A barred card can re-validated by presenting the enrolment card followed by the user card to the reader.

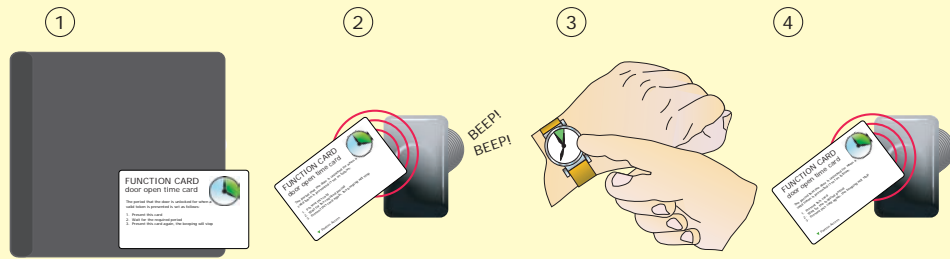
## Fail open release card - Compact systems are fail closed as default



**THIS CARD CAN ONLY BE USED WITH A FAIL OPEN LOCK.**

1. Take the fail open release function card from the starter pack.
2. Present/swipe the card through the reader. The reader will beep for about a second.
3. The reader is now set to fail open mode. This allows safe operation of the door in case of fire: The lock will release when the power is cut.
4. To revert to fail closed mode, swipe the card again and the reader will beep once.

## Door open time (seconds)



1. Take the door open time function card from the starter pack.
2. Present the card to the reader. The reader will start beeping.
3. Wait for the required period you wish the door to remain open.
4. Present the card again at the end of the period to set the open time. The beeping will stop.

## Silent operation



1. Take the silent operation function card from the starter pack.
2. Present the card to the reader. The reader will beep.
3. The reader is now in silent operation mode.
4. Present the card again to disable silent operation mode. The reader will beep twice.

## Specifications

Features	Min	Max	
Number of Users	1	10,000	
Number of Card Packs	1	100	
Door open time	1 sec	60 secs	
Time zones (with additional time clock)	1	2	
Access levels (Color Zones)	1	3	
Silent operation			Yes
Can be used with fail OPEN locks			Yes
Can be used with fail CLOSED locks			Yes
Exit button input			Yes
Electrical	Min	Max	
Voltage	11V DC	14V DC	
Current		160 mA	
Switchable current		1A	
Environment	Min	Max	
Operating temperature	-20 °C (-4 °F)	+55 °C (131 °F)	
Waterproof	IPX7		Outdoor Use
Cable length			3 yards
Dimensions	Diameter	Depth	
	3/4 inch	2 3/8 inch	
Read Range	Token	Keyfob	Hands Free Token
	3 inch	1 1/2 inch	Not Compatible