

Net2 PaxLock US Demo Case

Quick Start Guide

The Net2 PaxLock US demo case is the ideal sales tool to show customers the true capabilities of Net2 PaxLock.

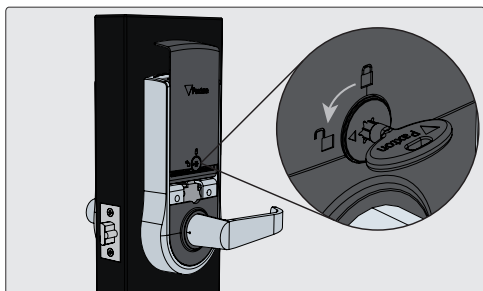
What's in the box?

- Net2 PaxLock US, C-Keyway
- Demo stand
- Net2Air bridge - USB
- Net2 desktop reader
- Net2 software - Pro DVD
- Net2 token selection
- 4 x AA Batteries
- 2 x USB cables
- 2 x lock keys
- Robust travel case
- Battery compartment key



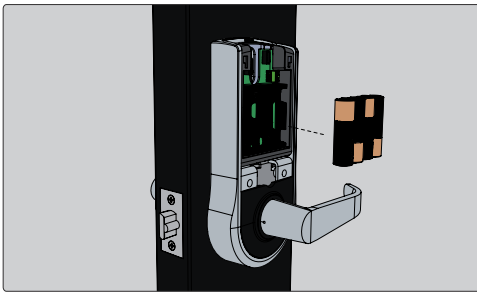
Please note:

The Net2 PaxlockUS demo case must not be used in low power mode. The default setting is standard power mode, and this can only be changed in Net2 software.



Step 1

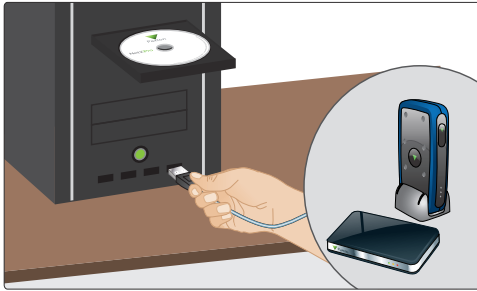
Unlock the battery cover with the battery cover key and slide the cover up and away from the unit.



Step 2

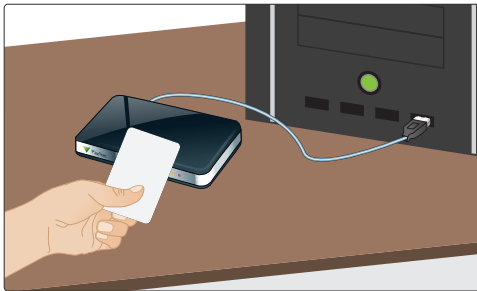
Insert batteries into the Net2 PaxLock. The unit will power up and run an audible self-diagnostic check.

Re-insert the cover and lock with the battery cover key.



Step 3

Connect the Net2 desktop reader and the Net2Air bridge to your PC, then install the Net2 software. Once the software is installed, you will see the green and red LEDs illuminated on the Net2Air bridge.



Step 4

Open the Net2 software and present your user token to the Net2 desktop reader. This will open the Add User interface for you to enter your details.



Step 5

Once the user details have been added, present the user token to the Net2 PaxLock unit. The Net2 PaxLock will now bind to the database.

You will see additional activity with the blue LED on the Net2Air bridge and the Net2 PaxLock will also appear within the Doors screen of the Net2 software.

The Net2 PaxLock US unit is now online and ready to use.

+1 (800) 672-7298

<http://www.paxton-access.com/>

supportUS@paxton-access.com