

Using ABA format 3rd party cards with Net2

Data formats

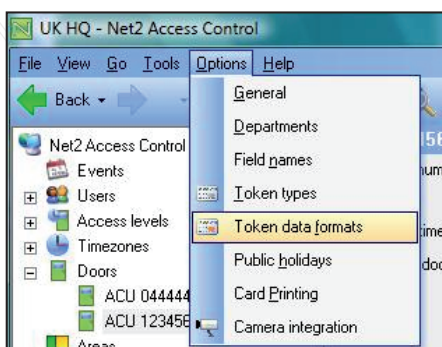
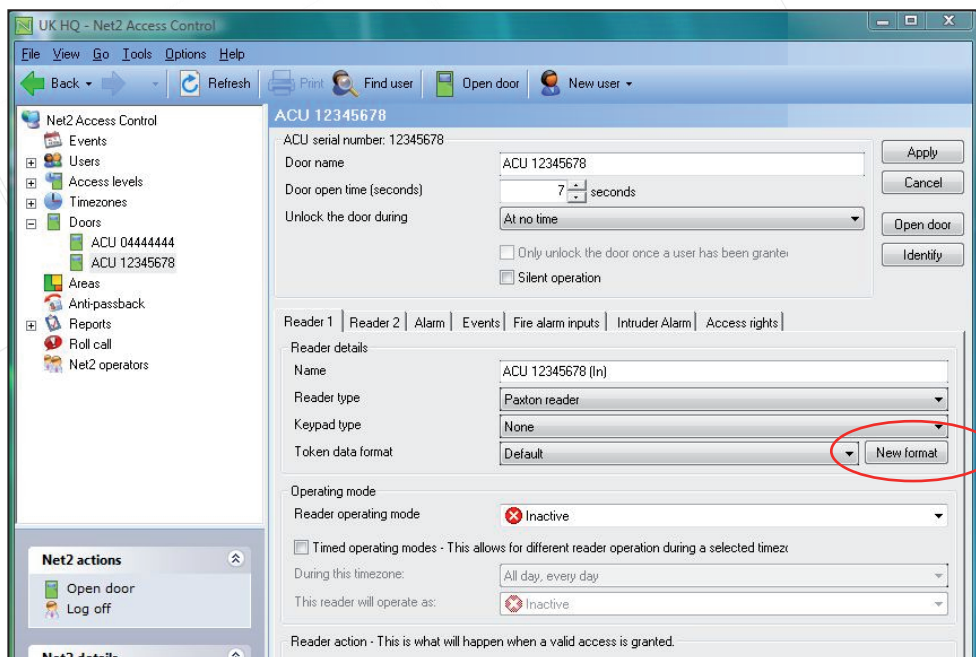
The Net2 system identifies users by the 8-digit number on their user card/token. Each user must have a unique number for the system to recognise them. Net2 cards only have this 8 digit number.

3rd party cards encoded with a longer number can also be used so long as the data is in the ABA format and a portion of the data is unique to each card.

It is possible to configure the Net2 system to look at the unique part of the card information.

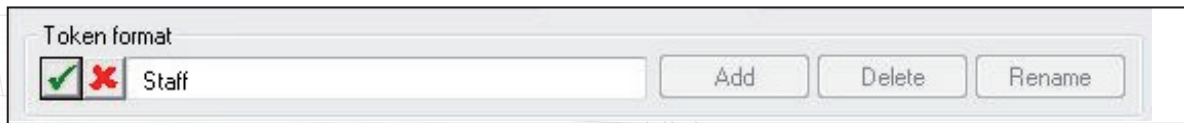
Adding a new token data format

There are two ways to add a new data format. From the Reader 1 or 2 details in the Doors screen, click New format or select the Options menu at the top of the screen and click on Token data formats.



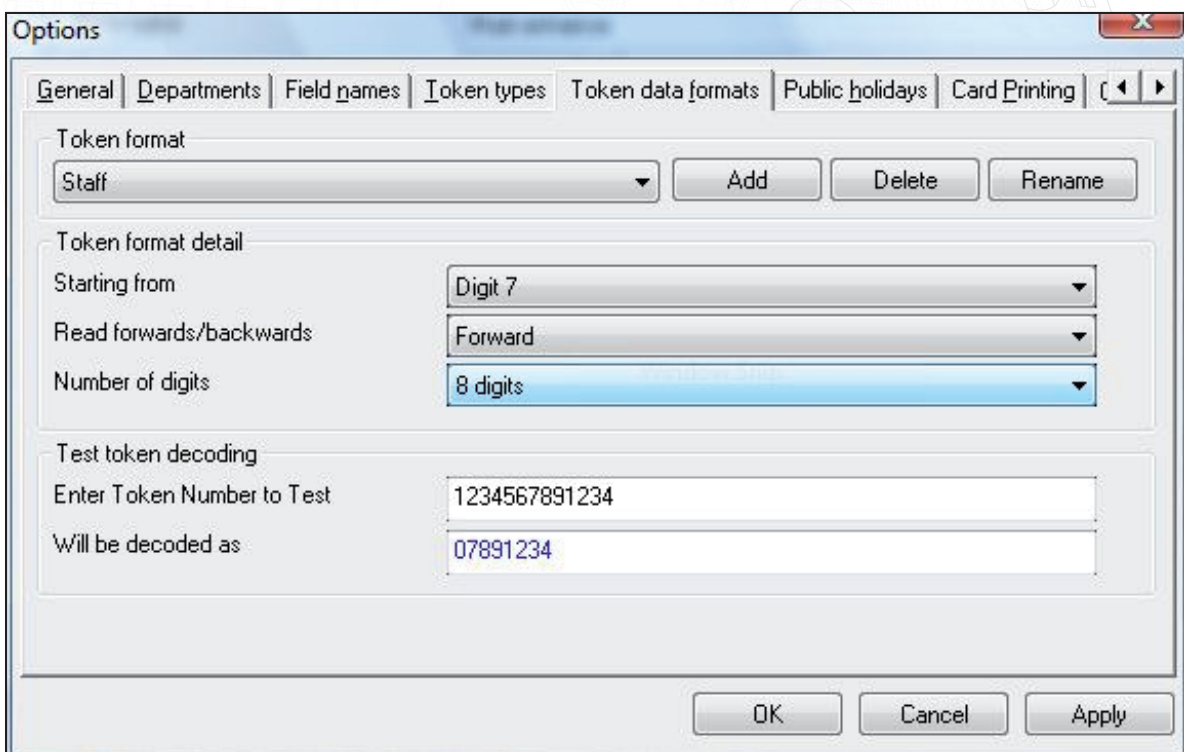
A new format can be configured by pressing the Add button.

Enter the name of the new format in the text box and press the tick icon to accept. Select the part of the data that is unique by adjusting the settings as required.



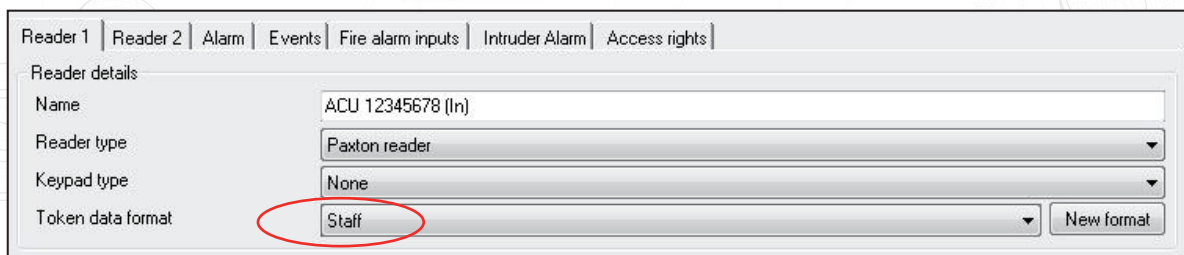
A small window titled "Token format" with a green checkmark icon and a red X icon. A text box contains the word "Staff". To the right are three buttons: "Add", "Delete", and "Rename".

The settings can be tested by entering a card number (or swiping through the desktop reader). The way that Net2 will interpret the information is then displayed.



The "Options" dialog box, "Token data formats" tab. It shows the "Token format" dropdown set to "Staff". Below it, "Token format detail" section has "Starting from" set to "Digit 7", "Read forwards/backwards" set to "Forward", and "Number of digits" set to "8 digits". The "Test token decoding" section shows "Enter Token Number to Test" as "1234567891234" and "Will be decoded as" as "07891234". At the bottom are "OK", "Cancel", and "Apply" buttons.

To implement a data format on a reader, it must be selected in the Doors/Reader screen.



The "Reader details" window. It shows fields for "Name" (ACU 12345678 (In)), "Reader type" (Paxton reader), "Keypad type" (None), and "Token data format" (Staff). The "Token data format" dropdown is circled in red. A "New format" button is next to it.

A USB desktop reader cannot be used to read custom card formats.

A standard reader connected to an ACU reader port must be used in Desktop reader mode.