

Using ABA format 3rd party cards with Net2

Data formats

The Net2 system identifies users by the 8-digit number on their user card/token. Each user must have a unique number for the system to recognise them. Net2 cards only have this 8 digit number.

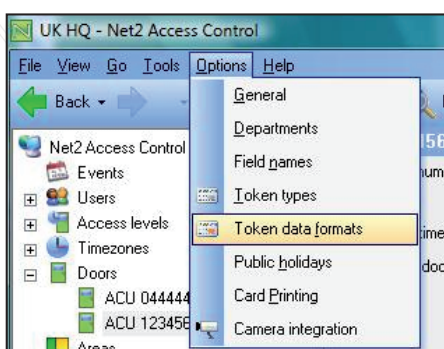
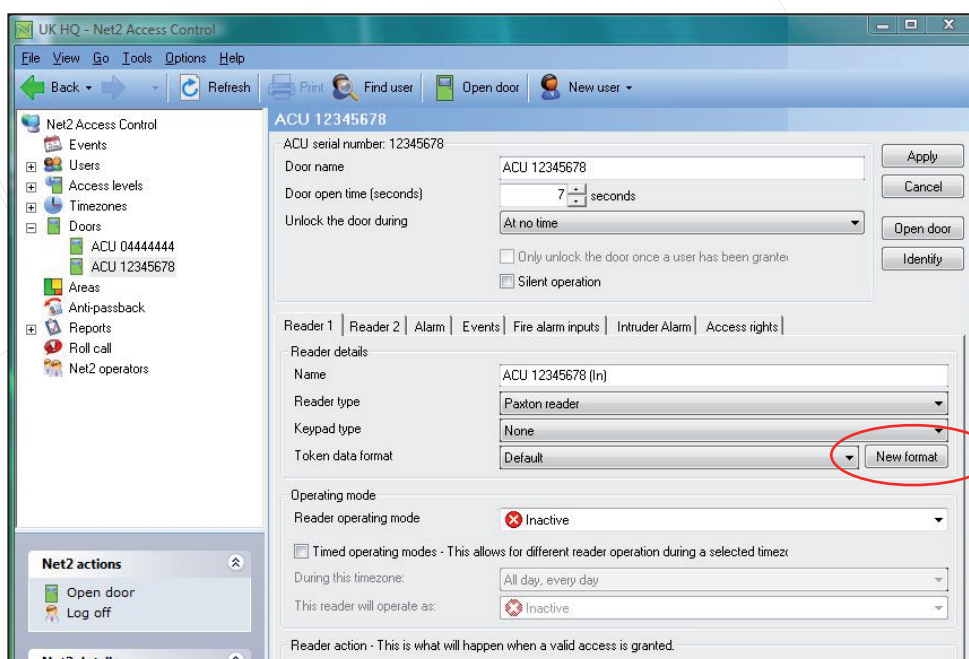
3rd party cards encoded with a longer number can also be used so long as the data is in the ABA format and a portion of the data is unique to each card.

It is possible to configure the Net2 system to look at the unique part of the card information.



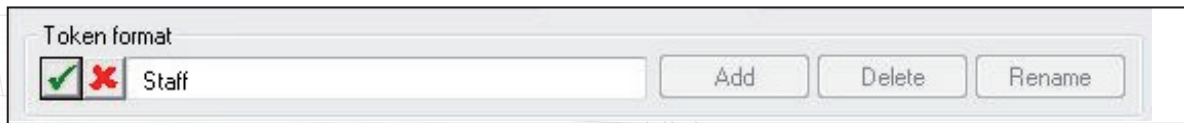
Adding a new token data format

There are two ways to add a new data format. From the Reader 1 or 2 details in the Doors screen, click New format or select the Options menu at the top of the screen and click on Token data formats.



A new format can be configured by pressing the Add button.

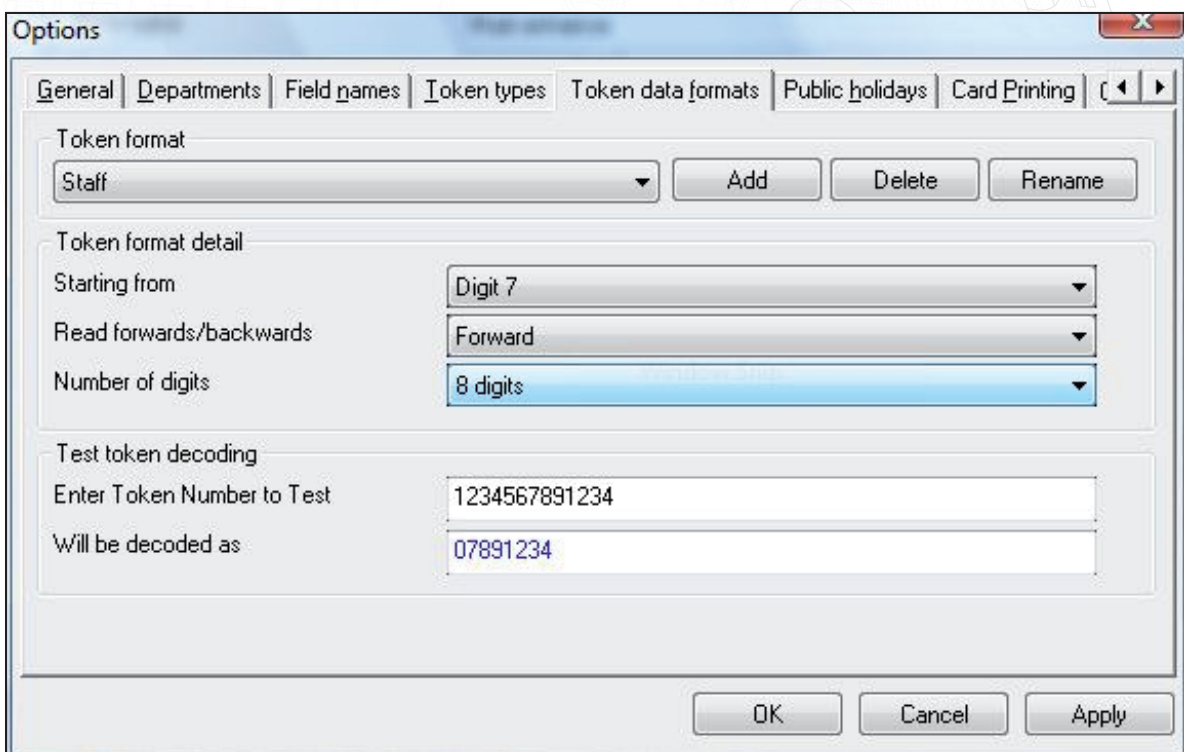
Enter the name of the new format in the text box and press the tick icon to accept. Select the part of the data that is unique by adjusting the settings as required.



Token format

☒ ☐ Staff

The settings can be tested by entering a card number (or swiping through the desktop reader). The way that Net2 will interpret the information is then displayed.



Options

General | Departments | Field names | Token types | Token data formats | Public holidays | Card Printing

Token format

Staff

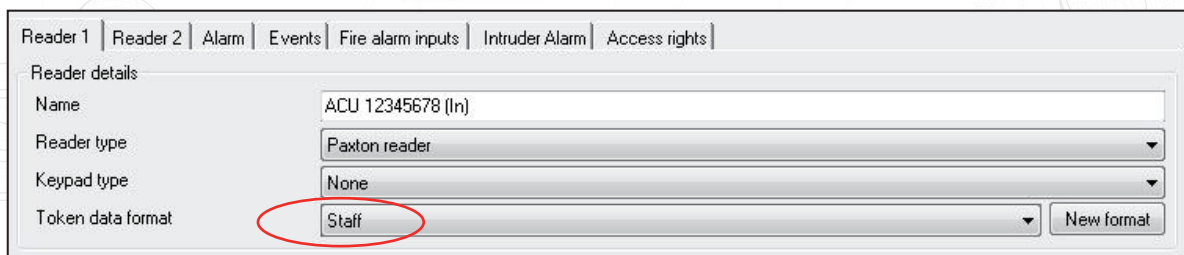
Token format detail

Starting from: Digit 7
 Read forwards/backwards: Forward
 Number of digits: 8 digits

Test token decoding

Enter Token Number to Test: 1234567891234
 Will be decoded as: 07891234

To implement a data format on a reader, it must be selected in the Doors/Reader screen.



Reader 1 | Reader 2 | Alarm | Events | Fire alarm inputs | Intruder Alarm | Access rights

Reader details

Name: ACU 12345678 (In)
 Reader type: Paxton reader
 Keypad type: None
 Token data format: Staff

A USB desktop reader cannot be used to read custom card formats as there is no configuration window available.

A standard reader connected to an ACU reader port must be used in Desktop reader mode.