

Using the events screen

What are Events?

An 'Event' is the report of an incident that has occurred on the system. For example, when a user presents their card and is permitted access, an 'Access Permitted' event is sent to the PC.

Other access events include Access Denied, Door opened with Exit button, etc.

System events are also included, for example Operator logon, Backup Succeeded and control unit information such as ACU offline, etc.

Where other features are fitted, such as door contacts, the resulting Door Forced and Door Left Open alarms are logged.



Events

Events					
Date/time	User	Where	Event	Details	
03/07/2008 11:50:39	Card 2, Test	Stairwell top C (In)	Access permitted - token only		
03/07/2008 11:50:26	Bidgood, Martyn		Operator	Logon	
03/07/2008 11:50:14	King, Dave	Entrance C (In)	Access permitted - token only		
03/07/2008 11:48:38		Stairwell C nano	ACU online		
03/07/2008 11:48:37		Stairwell C nano	ACU not responding		
03/07/2008 11:48:35	King, Dave	Entrance A (Out)	Access permitted - token only		
03/07/2008 11:48:13		Stairwell top A	Door opened	With exit button	
03/07/2008 11:47:38	Brown, Mick	Stairwell C to Canteen (In)	Access permitted - token only		
03/07/2008 11:47:16			Trigger and action rule was run	EMC lab entered	
03/07/2008 11:47:10	King, Dave	EMC Lab (In)	Access permitted - token only		
03/07/2008 11:47:04		Back door GF Unit C	Door left open		
03/07/2008 11:46:32	Brown, Mick	Back door GF Unit C nano (In)	Access denied - invalid token	Access level not valid	
03/07/2008 11:46:14	Brown, Mick	Back door GF Unit B (In)	Access permitted - token only		
03/07/2008 11:42:16	King, Dave	Timesheet (Reception) (In)	Time and attendance	Clock in	
03/07/2008 11:42:05	Brown, Mick	Stairwell C to Canteen (In)	Access permitted - token only		

While the Net2 application is running, events will be displayed immediately they are received. If the PC is switched off, the event will be stored in the control unit (2,454 event buffer) until the PC is next switched on when these events will then be retrieved. Each ACU has its own clock and so events will always have the correct Date/Time, even if they are stored at the ACU before being sent to the PC.

The default display shows the events in date/time order with the most recent displayed at the top.

If you wish to view previous events, (up to 10,000) you can use the scroll bar at the side of the screen and the updates will be PAUSED. To resume live updates you can either scroll back to the top of the screen or use the tree view to select another option and then return to the events view.

Double clicking an event involving a user will automatically open their user record.

You can double click on any of the column headers (e.g. User) and the view will be sorted in alphabetical order. If you double click the column header again it will reverse the order.

A warning 'Events have been filtered' displays and the screen updates are HALTED with a Red Cross displayed in the Tool Bar. Click on the cross to return to the default display.

When using a filter, a maximum of 1,000 Events can be viewed.

Date/time	User	Where	Event	Details
03/07/2008 11:48:35	Whitehouse, Stephen	Entrance A (Out)	Access permitted - token only	
03/07/2008 11:48:16	Whitehouse, Stephen	Stairwell A nano (In)	Access permitted - token only	
03/07/2008 11:48:14	Whitehouse, Stephen	Stairwell top A (In)	Access permitted - token only	
03/07/2008 13:30:01	Williams, Chris	Timesheet (Support) (In)	Time and attendance	Clock in
03/07/2008 13:29:56	Williams, Chris	Stairwell top B (In)	Access permitted - token only	
03/07/2008 13:29:37	Williams, Chris	Entrance B (In)	Access permitted - token only	
03/07/2008 13:29:20	Williams, Chris	Gate out	Access permitted - token only	
03/07/2008 12:30:57	Williams, Chris	Timesheet (Support) (Out)	Time and attendance	Clock out
03/07/2008 12:25:49	Wilson, Stephen	Timesheet (Support) (In)	Time and attendance	Clock in
03/07/2008 11:39:02	Wilson, Stephen	Stairwell C to Canteen (In)	Access permitted - token only	
03/07/2008 11:37:24	Wilson, Stephen	Timesheet (Support) (Out)	Time and attendance	Clock out
03/07/2008 14:17:26	Woodbridge, David	Stairwell A to R&D (In)	Access permitted - token only	
03/07/2008 13:27:33	Woodbridge, David	Stairwell A to R&D (In)	Access permitted - token only	
03/07/2008 13:27:27	Woodbridge, David	Entrance A (In)	Access permitted - token only	
03/07/2008 10:47:57	Woodbridge, David	Stairwell A to R&D (In)	Access permitted - token only	
03/07/2008 10:47:54	Woodbridge, David	Entrance A (In)	Access permitted - token only	
03/07/2008 12:51:16	Worsell, Chris	Timesheet (Reception) (In)	Time and attendance	Clock in
03/07/2008 12:50:55	Worsell, Chris	Stairwell C to Canteen (In)	Access permitted - token only	
03/07/2008 12:50:48	Worsell, Chris	Entrance C (In)	Access permitted - token only	
03/07/2008 12:03:54	Worsell, Chris	Entrance C (Out)	Access permitted - token only	
03/07/2008 12:03:30	Worsell, Chris	Timesheet (Reception) (Out)	Time and attendance	Clock out

Alarm Event Filter

Active Alarm Events (red icon) can be given display priority by clicking on the Alarm Filter icon. This will keep un-acknowledged alarms at the top of the events screen.

Double clicking an active alarm event will give the option to acknowledge the alarm, changing its icon colour to green and removing it from the priority list. Multiple alarms can be acknowledged at the same time.

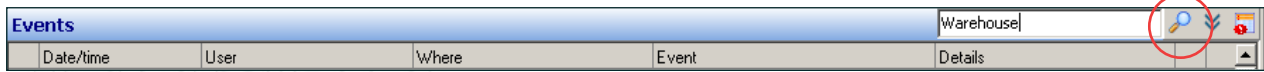
Click on the filter icon again to return to the default display.

If you scroll down the screen, the event update will PAUSE and new alarms will not be displayed until the scroll bar has been returned to the top of the screen.

Date/time	User	Where	Event	Details
03/07/2008 09:38:16		Back door GF Unit C	Door left open	
03/07/2008 09:33:00		Back door GF Unit C	Door left open	
03/07/2008 13:25:27	Brown, Mick	Glass doors (In)	Access permitted - token only	
03/07/2008 13:25:17	System engineer	Glass doors (In)	Access permitted - token only	
03/07/2008 13:24:42	King, Dave	Back door GF Unit B (In)	Access permitted - token only	
03/07/2008 13:24:39	Brown, Mick	Glass doors (In)	Access permitted - token only	
03/07/2008 13:23:48	King, Dave	Stairwell C to Canteen (In)	Access permitted - token only	
03/07/2008 13:23:43	King, Dave	Entrance C (In)	Access permitted - token only	
03/07/2008 13:23:43		Stairwell top A	Door opened	With exit button
03/07/2008 13:23:14	King, Dave	Timesheet (Reception) (Out)	Time and attendance	Clock out
03/07/2008 13:22:59	Brown, Mick	Timesheet (Support) (In)	Time and attendance	Clock in
03/07/2008 13:22:51	King, Dave	Stairwell B nano (In)	Access permitted - token only	

Event search

Events may be searched for keywords. Enter the required text in the search text box. (e.g. Warehouse) Press the magnify icon and it will search for any events containing this text and display up to 1000 records.

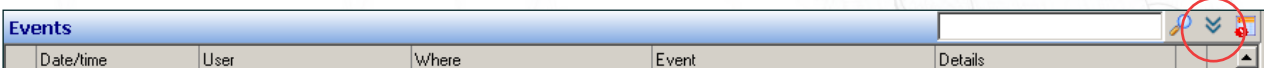


The following screen is produced.

Events have been filtered					
Date/time	User	Where	Event	Details	
04/07/2008 06:51:40	Brown, Mick	Warehouse front door (In)	Access permitted - token only		
04/07/2008 06:44:55		Warehouse front door	Intruder alarm	Disarmed	
04/07/2008 01:01:57		Warehouse back door	Intruder alarm	Armed	
03/07/2008 17:47:57		Warehouse front door	Door opened	With exit button	
03/07/2008 09:44:19	Brown, Mick	Warehouse back door (In)	Access permitted - token only		
03/07/2008 08:38:03		Warehouse front door	Door opened	With exit button	

- Advanced Search

This feature is available by clicking on the Extend View icon.



Set up the required parameters and click the magnify icon to run the search. A maximum of 1000 records will be displayed.

Advanced search

Date range

Select date range: Today

Select dates: From 03/07/2008 To 03/07/2008

Select times: From 00:00:00 To 23:59:59

Filter options

Show access events

Show information events

Show system events

Show warning events

Show alarm events

Search

Search fields: Match whole word only

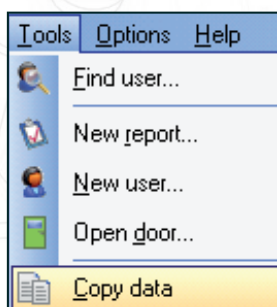
First name Event

Surname Details

Where

Date/time	User	Where	Event	Details
03/07/2008 11:53:27		Glass doors (In)	Access denied - invalid token	Token details not found
03/07/2008 11:53:17		Glass doors	Door opened	With exit button
03/07/2008 11:51:41		Glass doors	Door opened	With exit button
03/07/2008 11:50:39	Brown, Mick	Stairwell top C (In)	Access permitted - token only	
03/07/2008 11:50:26	Bidgood, Martyn		Operator	Logon
03/07/2008 11:50:14	Brown, Mick	Entrance C (In)	Access permitted - token only	
03/07/2008 11:48:35	Brown, Mick	Entrance A (Out)	Access permitted - token only	

Copy Events



You can copy the data from the Events screen by using the Tools/Copy Data function in the tool bar. This data can then be pasted into another windows application. The number of records copied will depend on the PC spec, event file size, etc.

To copy specific data, first click and drag across the data to be copied with the mouse and once highlighted use the Copy Data function.

Users Events

1000 events for a particular user can be viewed in their user record. Select the relevant user and click on the events tab.

The events in this screen can be sorted by any of the columns by clicking the left mouse button over the column header.

Bidgood, Martyn

First name: Martyn
Surname: Bidgood
Department: R & D
Telephone: _____ Fax: _____
Position: _____
Valid from: 03/05/2000 Expires end: Never expires

Access rights | Tokens | Other details | Memo | **Events** | Current validity | Anti-passback

Events have been filtered

Date/time	User	Where	Event	Details
04/07/2008 13:21:37	Bidgood, Martyn		Operator	Logon
04/07/2008 12:53:39	Bidgood, Martyn	Stairwell top A (In)	Access permitted - token only	
04/07/2008 12:53:39	Bidgood, Martyn	Stairwell A nano (In)	Access permitted - token only	
04/07/2008 12:33:40	Bidgood, Martyn	Stairwell top C (In)	Access permitted - token only	
04/07/2008 12:33:37	Bidgood, Martyn	Stairwell top C (In)	Access permitted - token only	

Viewing Events at a door

Use the tree view menu to display the relevant door and click on the Events tab.

Again, 1000 entries can be sorted by clicking on the column header.

Warehouse
ACU serial number: 00312612

Door name: Warehouse
Door open time (seconds): 7 seconds
Unlock the door during: At no time
 Only unlock the door once a user has been granted access

Reader 1 | Reader 2 | Alarm | **Events** | Fire alarm inputs | Intruder Alarm | Access rights

Events have been filtered

Date/time	User	Where	Event	Details
04/07/2008 13:30:42	Test 1	Warehouse (Out)	Access permitted - token only	
04/07/2008 13:30:42	Test 1	Warehouse (Out)	Reader detected	
04/07/2008 13:30:07	Test 1	Warehouse (In)	Access permitted - token only	
04/07/2008 13:30:05	Test 1	Warehouse (In)	Access permitted - token only	
04/07/2008 13:29:57	Test 1	Warehouse (In)	Access permitted - token only	
04/07/2008 13:29:55	Test 1	Warehouse (In)	Access permitted - token only	
04/07/2008 13:29:46	Test 1	Warehouse (In)	Access permitted - token only	
04/07/2008 13:28:28	Test 1	Warehouse	Door opened	With network instruction
04/07/2008 13:27:48	Test 1	Warehouse (In)	Access permitted - token only	
04/07/2008 11:40:54		Warehouse	Control unit reset	
04/07/2008 11:40:02		Warehouse	ACU online	

Viewing events with Paxton Connect Admin

Within the Paxton Connect Admin app, select 'Events' from the Home screen to view live events.

Events can be filtered by a keyword or phrase by selecting the search icon in the top right corner. Advanced search and filtering is not currently available within the app.

