

Using site graphics

Using Site Graphics

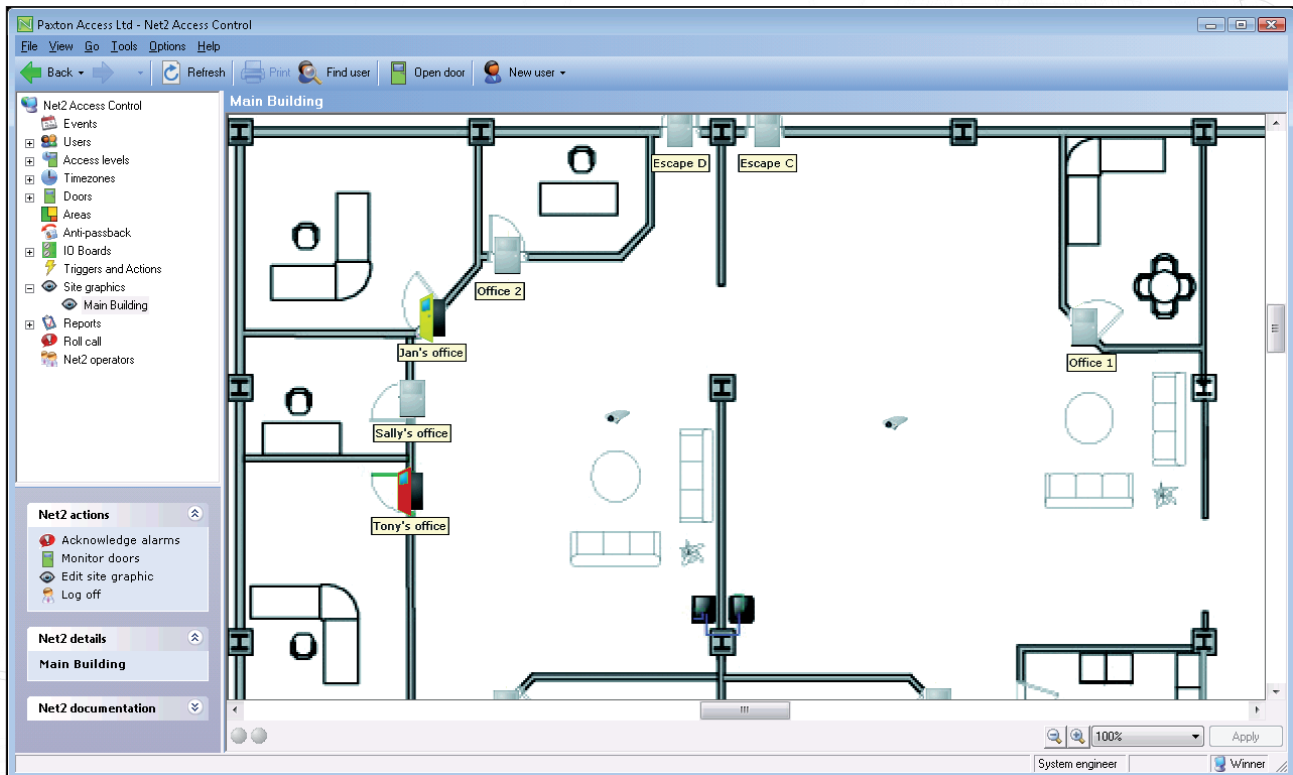
The Site Graphics feature allows operators to monitor the door status around the site at a glance. It will display normal door activity as well as alarm conditions such as a door forced event. During quiet periods, automated monitoring can be enabled to highlight any actions and initiate the quick investigation of unexpected activity.



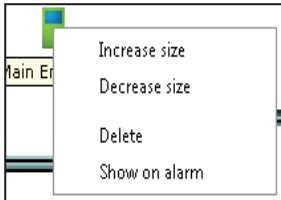
Add Site Graphic

To enable the function, click on View and then tick the 'Site Graphics' option. You can now select 'Site Graphics' from the tree view menu and click Add.

This screen forms the background image for the doors and should be in .jpg or .bmp format. This should be prepared using 3rd party software and must be sized to fit the screen used.



The prepared screen will now display as the main view. From the Net2 Actions, select 'Edit site graphic'. Select a door in the left tree view by clicking on it and then moving the cursor into the main window and click once again to drop it in the required location.



To resize the door, right click on the door graphic to show the edit menu. When you have finished with the site graphic, click Apply and then 'Stop Editing Site Graphic' under the Net2 Actions menu.



The door icon can also be used to access other Net2 functions.

Right clicking on an icon brings up the menu to Open the door, view door events, or to Configure the door settings.



Closed doors will be displayed as grey.



Doors opened by a valid entry will flash green for the door open time.



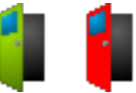
A door remaining open longer than the door open time will show as yellow.



'Door forced' or 'Door left open' alarm events display an icon flashing grey and red.



If no contacts are fitted, the icon will display as yellow and flash grey and green for the door open time.



Monitored Doors. If access is made whilst the doors are being monitored the icon will flash green and red and a Cancel Alarm button will appear at the bottom of the main display.



If the server loses contact with a control unit and cannot determine the true state of the door, the icon will display as a steady red open door.



When in 'Edit site graphics' mode a selected door will be displayed as blue.

Automated Monitoring

This very useful feature allows a guard to monitor for a change of condition on the screen without constantly looking at it. Flashing 'LED's' at the foot of the page confirm that the system is active.

Click on 'Monitor Doors' in the Net2 actions list. If access is now made, the door icon will flash green and red and a Cancel Alarm button will appear at the bottom of the main display.

To acknowledge this alarm, either click on Cancel Alarm, or right-click on the flashing door and click 'Acknowledge monitored door opened'.

