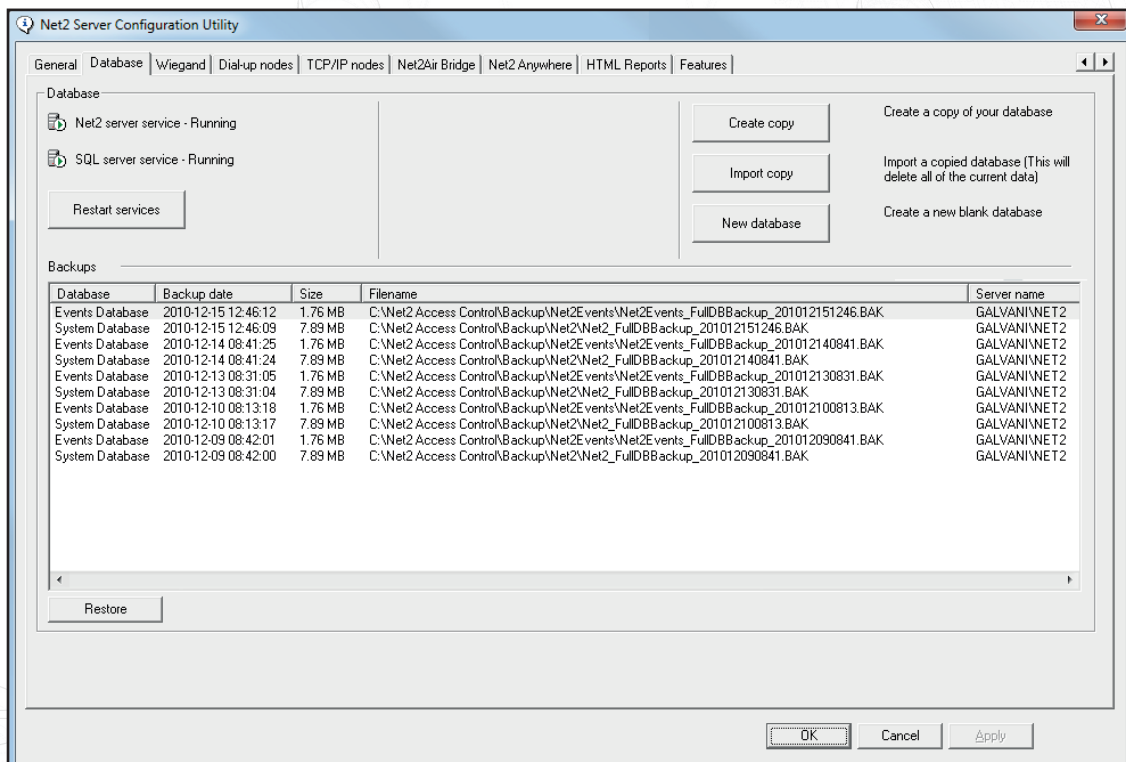


# Net2 backup procedures, Net2 V4

## Net2 Data backup

It is very important to backup the Net2 databases on a regular basis. Net2 has its own in-built procedures that creates backups automatically on the local drive of the server machine. The screen below shows a regular backup cycle of both the System and Events databases to C:\Net2 Access Control\Backup.

If a Database Restore is required, it is advisable that both the System and Events files are both restored as a pair from the same day.



It is recommended that a further backup of this folder is made to another location on the network or other media. The Windows Backup Utility is a good application to use and should be run on a regular basis.

For details on how to use the Backup Utility see the Windows help pages. These can be found through Start/Help & Support. Type Backup into the search field for details how to use the utility.

For further information please see: [www.microsoft.com](http://www.microsoft.com) for the relevant operating system compatability.