

Net2 backup procedures, Net2 V4 - Onwards

Changing the Net2 PC

To change the PC running a Net2 system, the software must be loaded onto the new PC and all of the files containing the site-specific information must be transferred across to the new PC from the old. Once these tasks have been completed the new PC can be connected to the data line containing the Net2 ACU's and the system will operate using exactly the same site information.



Choosing a PC for Net2

It is important that the PC chosen to run the Net2 server meets the minimum specification.

The current specification for compatible PC hardware, network and operating systems is available on our website at the following link:- <http://paxton.info/720>

Site specific Net2 Files

All of the files containing the site-specific information in a Net2 system are stored in a single folder. This contains all user and door details, events, reports, pictures and back-ups (see also Application note: [AN1070 - Net2 backup procedures, Net2 V4 < http://paxton.info/1604 >](http://paxton.info/1604)). The default folder for this information is C:\Net2 Access Control.

When changing PC it is important to copy the files contained within this folder across.

Making the change

Once the system files have been located the changeover is straightforward. Do not move any hardware until the software has been confirmed as working correctly with all user data present.

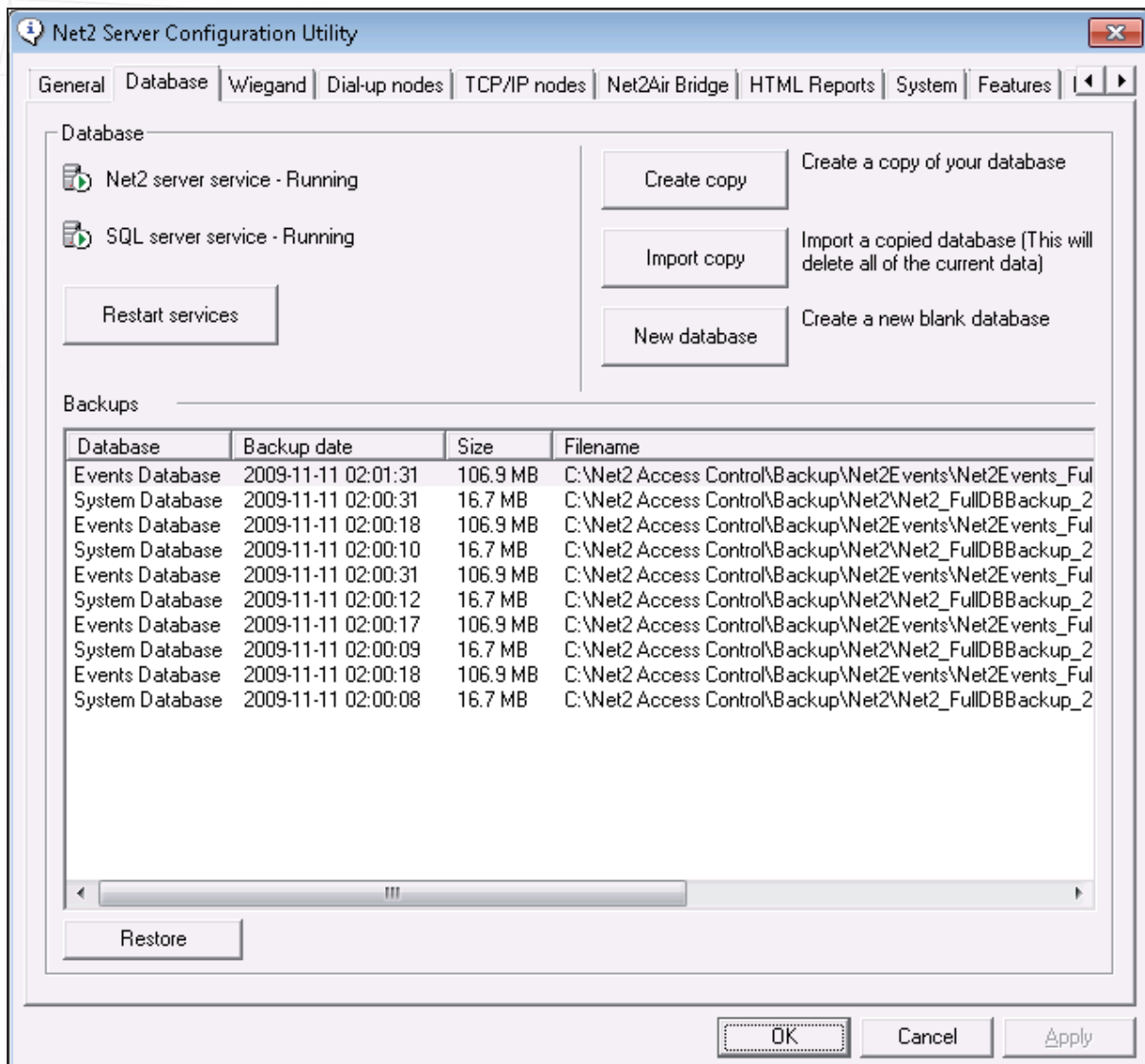
On the old PC

If the old PC is still connected to your network, you will need to Un-tick the nodes detected under the 'TCP/IP Nodes' tab in order to bring your doors online within your new PC.

In versions prior to Net2 v4.24 the settings held in the Configuration Utility (TCP/IP nodes, custom Wiegand configuration, etc) are not transferred across with the database, these will need to be entered manually on the new PC. Please ensure the database has been upgraded to this version prior to importing into V6.

Using the Net2 Server Configuration Utility, go to the Database tab and click the Create Copy button. This creates a copy of this existing database into a Zip file.

Save the Zip file to an appropriate location where you will be able to access it.



On the new PC

Load the Net2 software onto the new PC, making sure that the version is the same as the original version being used. Run the Net2 software.

Close the Net2 software and the Net2 server on the new and old PC's.

Copy the Net2Database.zip file from the old PC into c:\Net2 Access Control on the new machine.

Open the Net2 Server Configuration Utility. In the Database tab click the Import Copy, browse to the Net2Database.zip in the c:\Net2 Access Control folder and click Ok.

Run the Net2 application to confirm all details have been transferred correctly.

On RS485 networks, disconnect the Net2 data line from the old PC and connect it to the new PC.

Net2 control units connected via TCP/IP and wireless networks must be rediscovered using the Server Configuration utility. This information is PC specific and is not held in the Net2 database.