

Net2 operators - Adding / Assign privileges

Overview

The term 'Net2 operator' relates to a person that has access to and uses the Net2 software. There is no limit to the number of Net2 operators allowed.

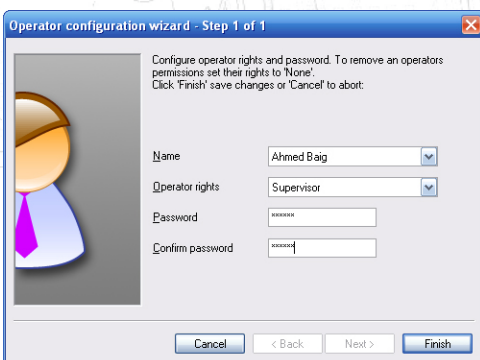
Net2 operators can be assigned different privileges allowing them various levels of access to the features of the system. Operator privileges are split up into 7 levels:



	System Engineer	Supervisor	Token administrator	Standard (Read only)	Events only	Timesheet Administrator	Timesheet only
Events	✓	✓	✓	✓	✓	✓	✗
Users	✓	✓	✓	Read only	✗	✓	✗
Access levels	✓	✓	Read only	Read only	✗	Read only	✗
Timezones	✓	✓	Read only	Read only	✗	Read only	✗
Doors	✓	Cannot replace or delete ACU's or refresh ACU firmware. Otherwise full access	✗	✗	✗	✗	✗
Areas	✓	Read only	✗	✗	✗	✗	✗
Anti-passback	✓	Read only	✗	✗	✗	✗	✗
I/O Boards	✓	✓	✗	✗	✗	✗	✗
Triggers and Actions	✓	✓	✗	✗	✗	✗	✗
Cameras	✓	✓	Read only	Read only	✗	Read only	✗
Site Graphics	✓	✓	Read only	Read only	✗	Read only	✗
Reports	✓	✓	Read existing and create new	Read only	✗	Read existing and create new	✗
Roll call	✓	✓	Read existing and create new	Read existing and create new	✗	Read existing and create new	✗
Net2 Operators	✓	Can create new operators at the level of Supervisor and below	Read only	Read only	✗	Read only	✗
Timesheet	✓	✓	Read only	Read only	Read only	✓	View own info.
Server Config. Utility	✓	✗	✗	✗	✗	✗	✗

Important

Only System engineers and Supervisors can create operators.
Supervisors cannot create System engineer operators.



The new operator wizard is launched by double clicking on the 'New operator' icon.

Before an operator can be added, they must first be a 'User' on the system.

Select the required privilege from the drop down menu.
Get the new operator to type in their password and confirm it.

Operators are removed by changing their privilege to 'None'.