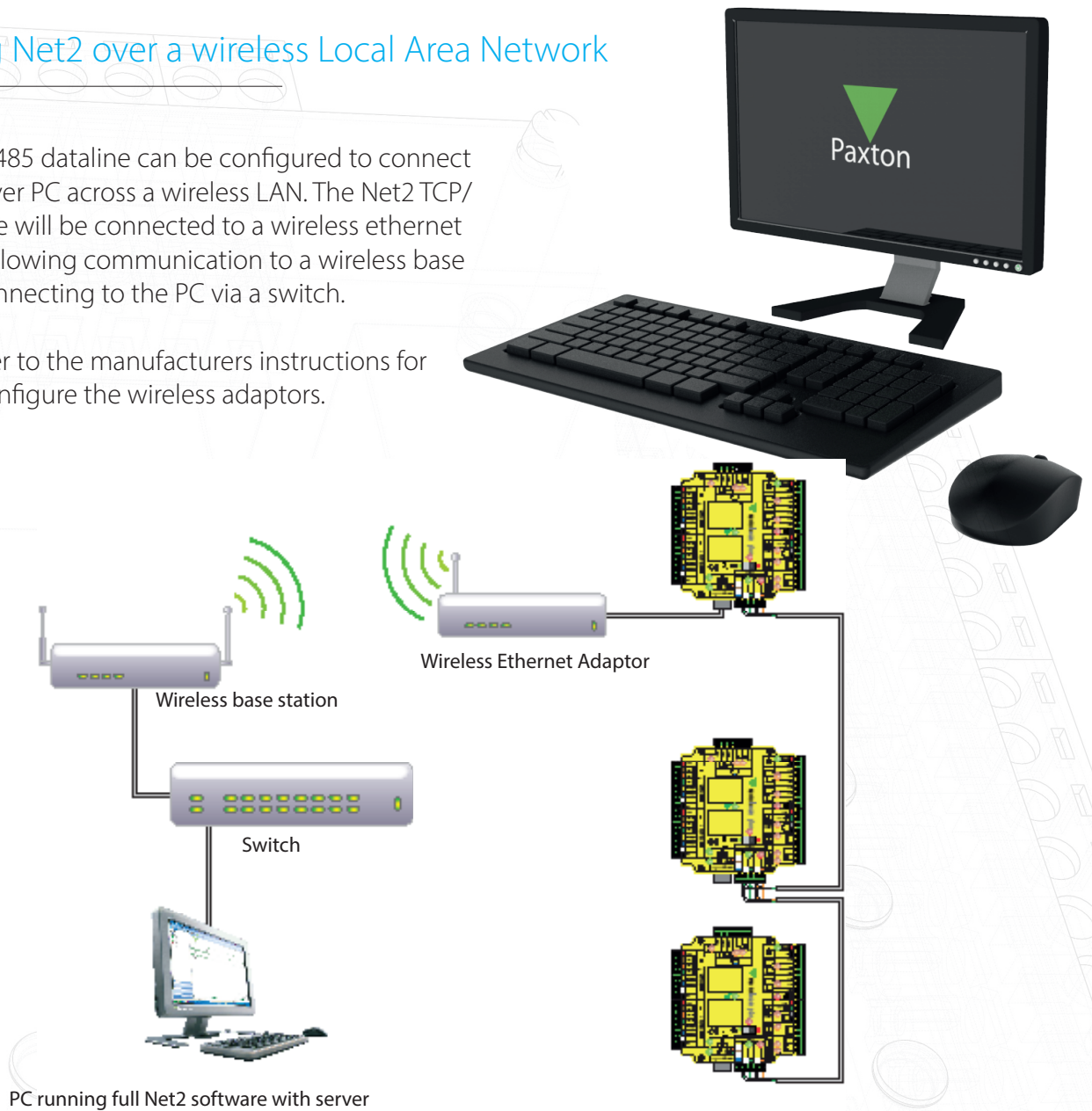


Extending an RS485 data line with a wireless router

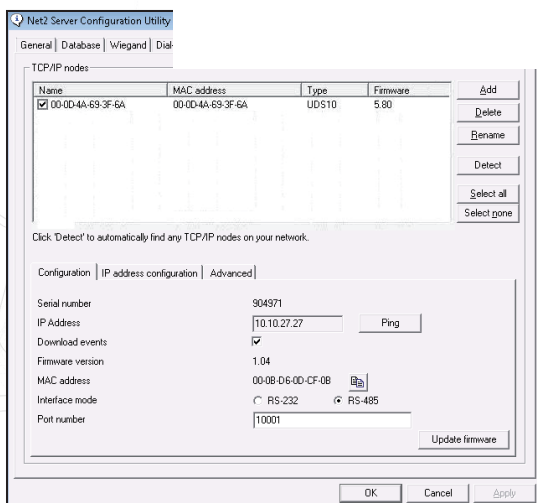
Installing Net2 over a wireless Local Area Network

A Net2 RS485 dataline can be configured to connect to the server PC across a wireless LAN. The Net2 TCP/IP interface will be connected to a wireless ethernet adaptor, allowing communication to a wireless base station connecting to the PC via a switch.

Please refer to the manufacturers instructions for how to configure the wireless adaptors.



PC running full Net2 software with server



In the Net2 Server Configuration Utility the Net2 TCP/IP interface should be detected and an IP address set for it.

You may also refer to -: [Ins-30001 Net2 485 TCP/IP Ethernet Interface](http://paxton.info/1369) < <http://paxton.info/1369> > for further information on how to install and configure the Net2 Ethernet interface.

Please contact your IT Administrator before installing this product.