

How to configure Security Lockdown

What is Security Lockdown?

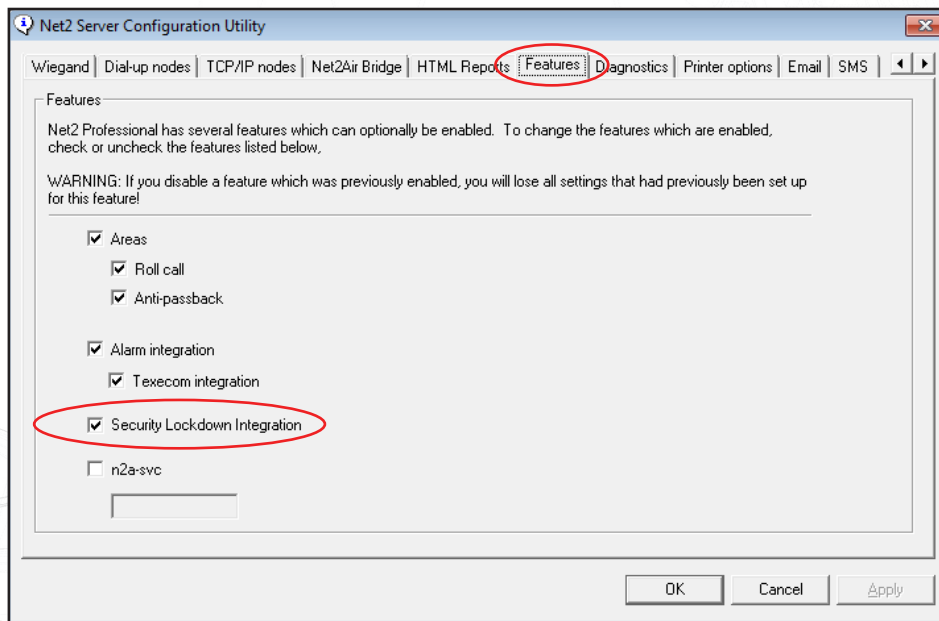
Lockdown is the facility to secure the site through a single action by disabling access through selected doors. This includes disabling exit buttons and relocking doors held open by time zones.

Specific users can be permitted to pass through these doors during the Lockdown condition.

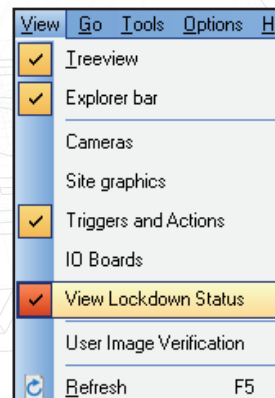
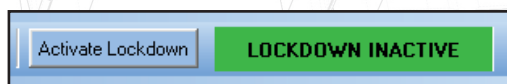


Configuration

This feature requires Net2 professional software version 4.21 or later. The security lockdown function must be enabled by checking the option in the Net2 Server configuration utility.



If you wish to display an on-screen Lockdown button and the current Lockdown status, you must click on the 'View Lockdown Status' option in the View menu.

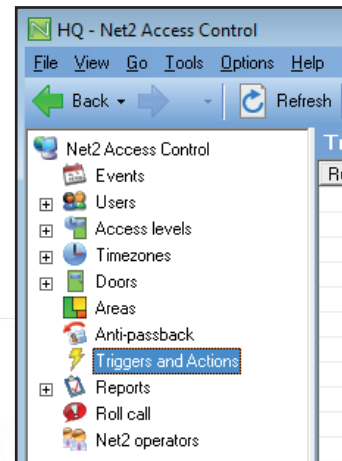


Triggers and Actions

Using Net2 Triggers and Actions we can select a trigger (e.g. clicking the on-screen Lockdown button) and select which doors are to be put into Lockdown status.

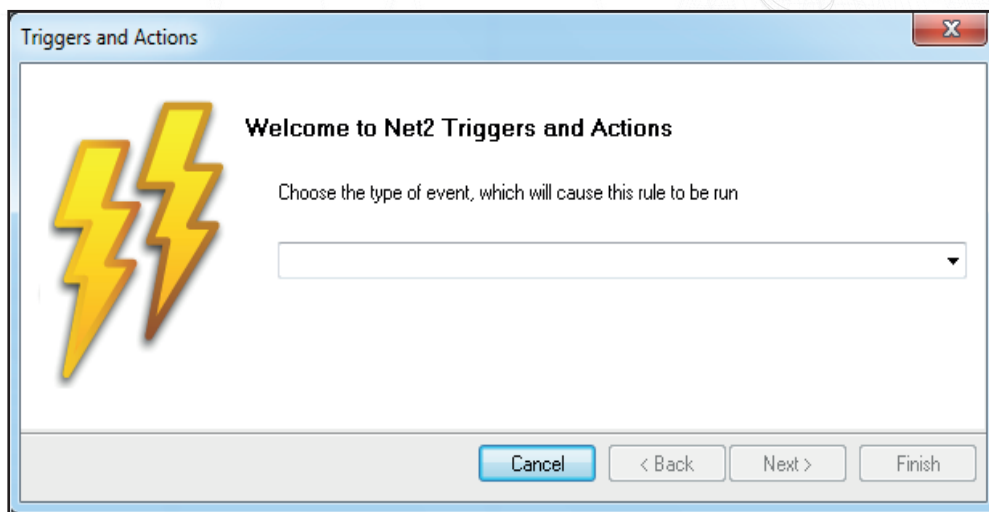
If the Triggers and Actions feature is not displayed in the tree view, click on View and check the option.

See also: [AN1067 - Using Triggers and Actions](http://paxton.info/507)
< <http://paxton.info/507> >

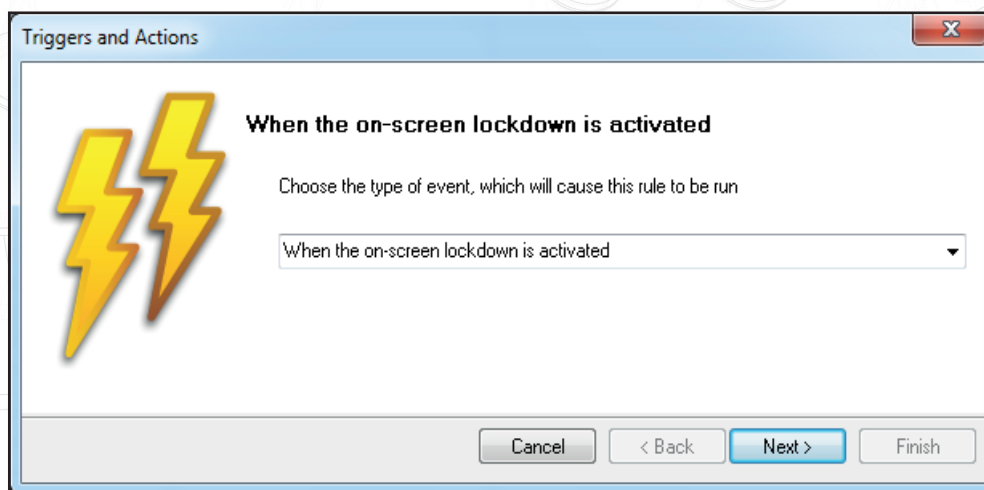


Click on Triggers and Actions and then the Add button.

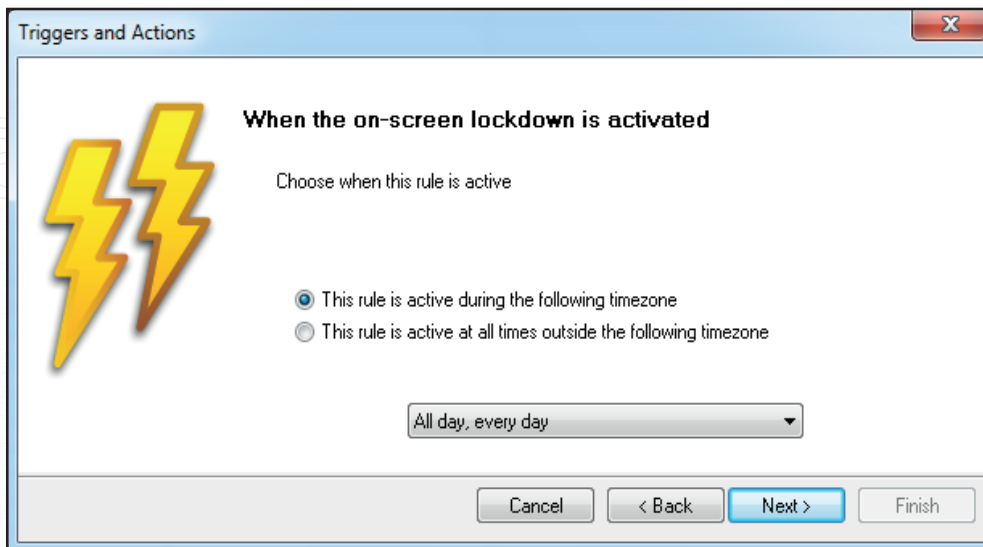
The following sequence of screens will show how to set up a T&A rule that will run when the on-screen Lockout button is pressed.



Select 'When the on-screen lockout is activated' as this relates to pressing the on-screen Lockout button. Select this from the list of triggers in the drop down menu.



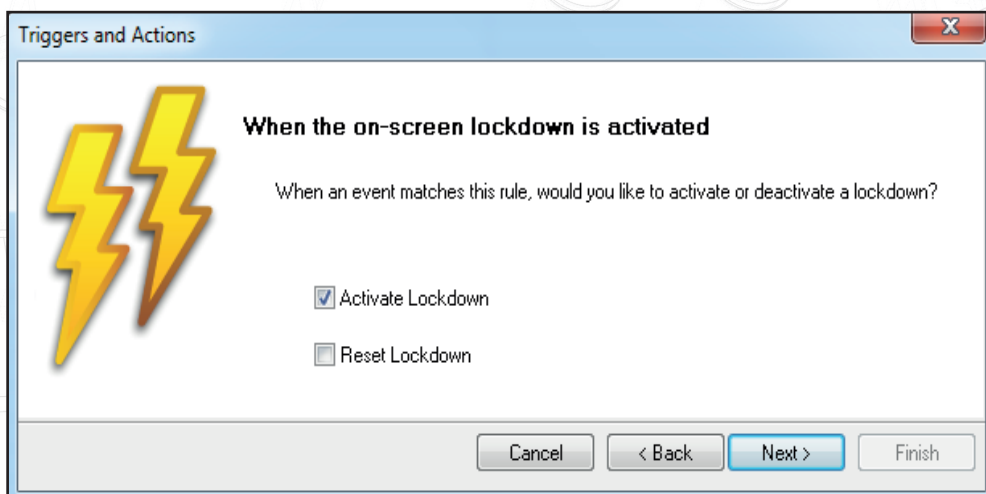
We now define the time period when this rule is active.



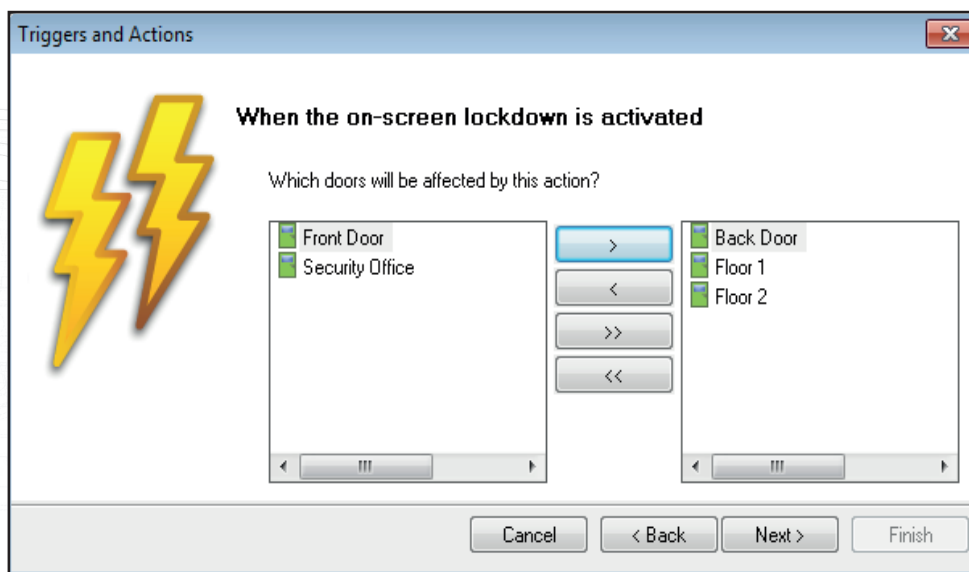
Select the action required. (Control Lockdown)



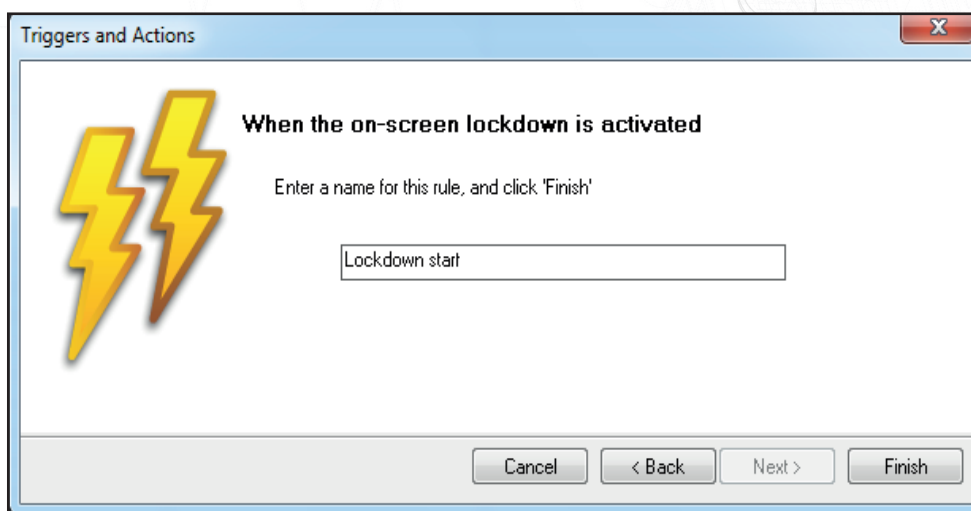
Configure the chosen action. (Activate Lockdown)



You can now define the Doors that Lockdown will operate on.
In this example, we will only Lockdown some areas. (Floor 1, Floor 2 and the Back Door.)



You can now give this rule a name, then press Finish.



A similar rule must be created to remove the Lockdown status from these doors. The same 'Add' procedure is used as above, but select 'when lockdown is deactivated' as the trigger and 'Reset Lockdown' as the action.

Further rules may be created. For example, a specific user card presented to a specific door could remove the Lockdown status from that door.

Net2 Access Control		Triggers and Actions		
	Rule name	Type	When is rule active	
<input checked="" type="checkbox"/>	Lockdown End	When the on-screen lockdown is deactivated	During the timezone:All day, every day	
<input checked="" type="checkbox"/>	Lockdown Start	When the on-screen lockdown is activated	During the timezone:All day, every day	

For Triggers and Actions to function correctly, the Net2 server must be running at all times.

View Lockdown Status

The lockdown status of each door may be viewed in the Doors screen.

	Name	ACU serial no.	Type	Version	Status	Port	Alarm	Lockdown Status
✓	Back Door	01115193	Net2 classic	V4.21 (Build 04210804)	OK	USB 1		Not Locked Down
✓	Floor 1	01115195	Net2 classic	V4.21 (Build 04210804)	OK	USB 1		Not Locked Down
✓	Floor 2	01115196	Net2 classic	V4.21 (Build 04210804)	OK	USB 1		Not Locked Down
✓	Front Door	01115192	Net2 classic	V4.21 (Build 04210804)	OK	USB 1		Not Locked Down
✓	Security Office	01115194	Net2 classic	V4.21 (Build 04210804)	OK	USB 1		Not Locked Down

In our example, pressing the Activate Lockdown button puts the Back door, Floor 1 and Floor 2 ACU's into Lockdown.

	Name	ACU serial no.	Type	Version	Status	Port	Alarm	Lockdown Status
✓	Back Door	01115193	Net2 classic	V4.21 (Build 04210804)	OK	USB 1		Locked Down
✓	Floor 1	01115195	Net2 classic	V4.21 (Build 04210804)	OK	USB 1		Locked Down
✓	Floor 2	01115196	Net2 classic	V4.21 (Build 04210804)	OK	USB 1		Locked Down
✓	Front Door	01115192	Net2 classic	V4.21 (Build 04210804)	OK	USB 1		Not Locked Down
✓	Security Office	01115194	Net2 classic	V4.21 (Build 04210804)	OK	USB 1		Not Locked Down

User lockdown exemption

During a security Lockdown, it may be necessary for certain staff to move around the site to investigate and attend to the incident.

There is a check box in each user record that may be selected to allow the user to operate doors that are in a Lockdown state. Their normal permissions will still apply and so doors normally barred to them will remain so.

These limitations will also apply when using the Open Door function at the PC.

Exit buttons will remain disabled so must be considered when planning lockdown exemptions.

This user is exempt from Lockdown rules

record Export vcf Apply