

# Entry configuration utility

## Overview

The Net2 Entry configuration utility is used to remotely view and edit the settings stored within the Net2 Entry system devices. Individual devices or groups can be updated.

Devices can also be segregated as sites. This allows more than one Net2 Entry system to be installed on a single network.

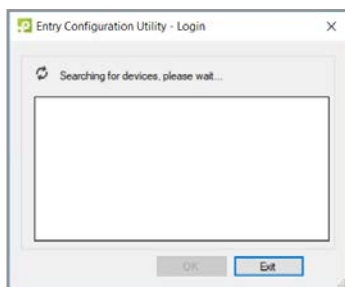
To ensure the best user experience and lifetime of your product we recommend your system is using the latest version of the Entry configuration utility by going here: [www.paxton.info/1907](http://www.paxton.info/1907)

When using Entry, the following minimum software versions are required:

- Paxton10 – v3.2 or higher
- Net2 – v4.27 or higher
- Entry – v2.20 or higher



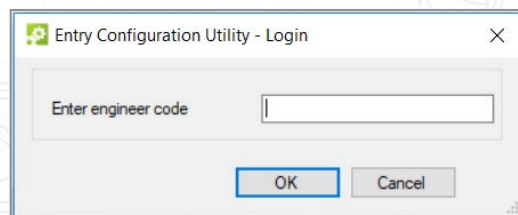
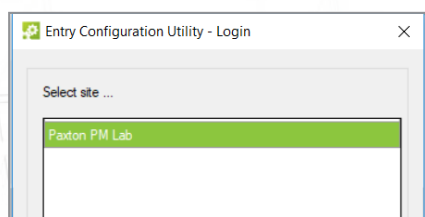
## Device detection and Site list



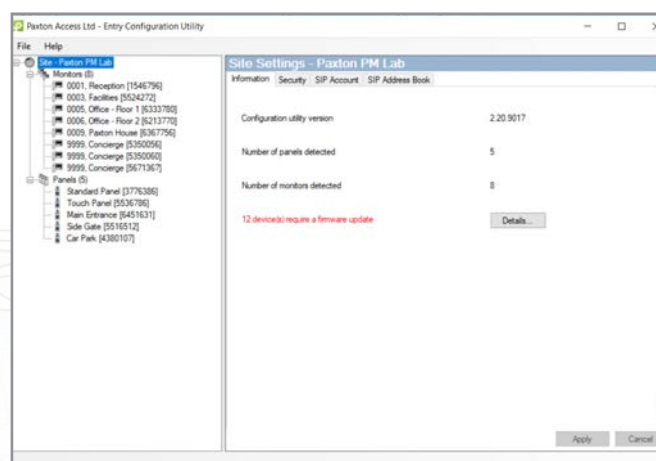
The utility scans the network and builds a list of all the Net2 Entry devices that are discovered.

Initially, these are assigned to the Default site.

Where devices have already been assigned to a site, the site names are listed when Logging in.

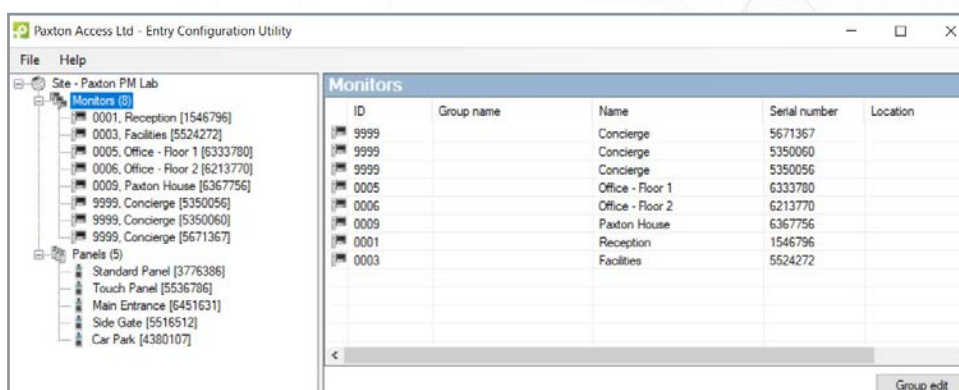


Select the site where necessary and then enter the engineer code.

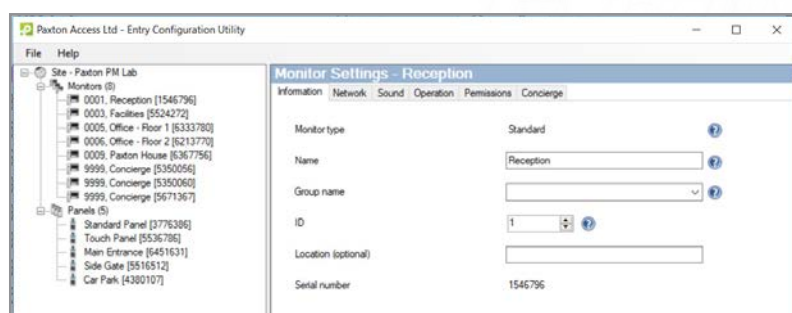


The Locked site 'Paxton House' is shown above. Only devices that are part of that site are displayed and may be edited from this screen.

## Device lists



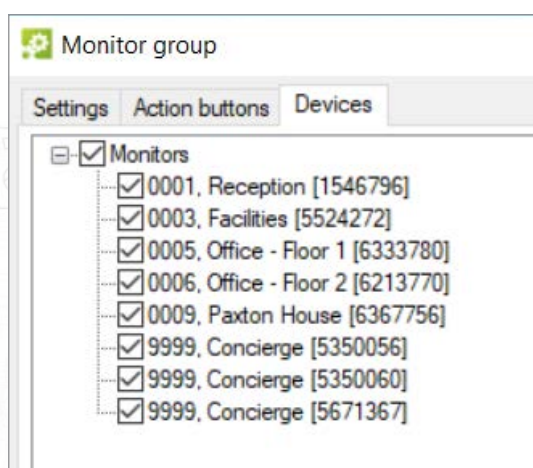
Click on the Monitors folder to expand the list into a tree view. Individual monitors can then be selected from that list. Multiple devices can be edited by using the Group edit function.



Individual monitor settings can be edited from this screen as required.

Panel settings can be edited in the same way as the monitors.

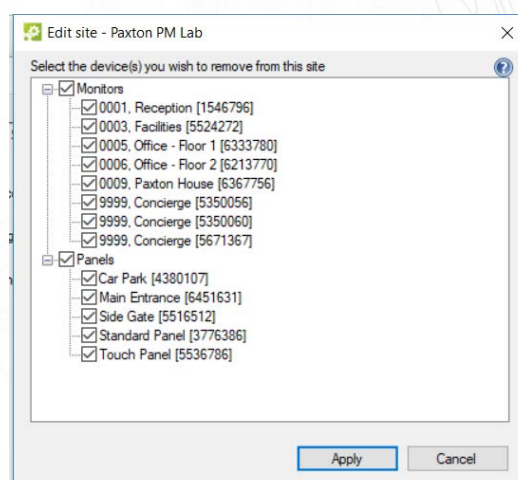
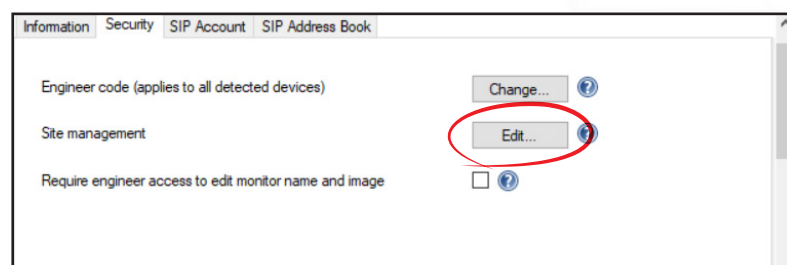
## Group editing



To edit the same parameter in several monitors or panels, click on the Group edit button on the monitor or panel list and display the group edit screen.

1. Select the specific devices in the Devices tab.
2. Select the required parameter and edit the value in the Settings tab.
3. Click OK.

## Site creation



Devices can be grouped under a site name that is secured with an engineers code for that site. This means you can install multiple panels and monitors on one network but have certain panels that only connect to specified monitors. The individual site can then be selected when logging in.

Site Example. - If you install 5 panels and 5 monitors they will auto detect and any monitor can be called from any panel.

If you lock 1 panel and 1 monitor to "Site A" they will only communicate with each other.

The other 4 panels will be able to communicate with the other 4 monitors but will not see any devices from "Site A", giving you two entirely separate systems on a single network.

Note: It is not possible to create sites and also have a "master" panel that can see all units on all sites. 3



Devices not part of a defined site will be listed as a Default site.

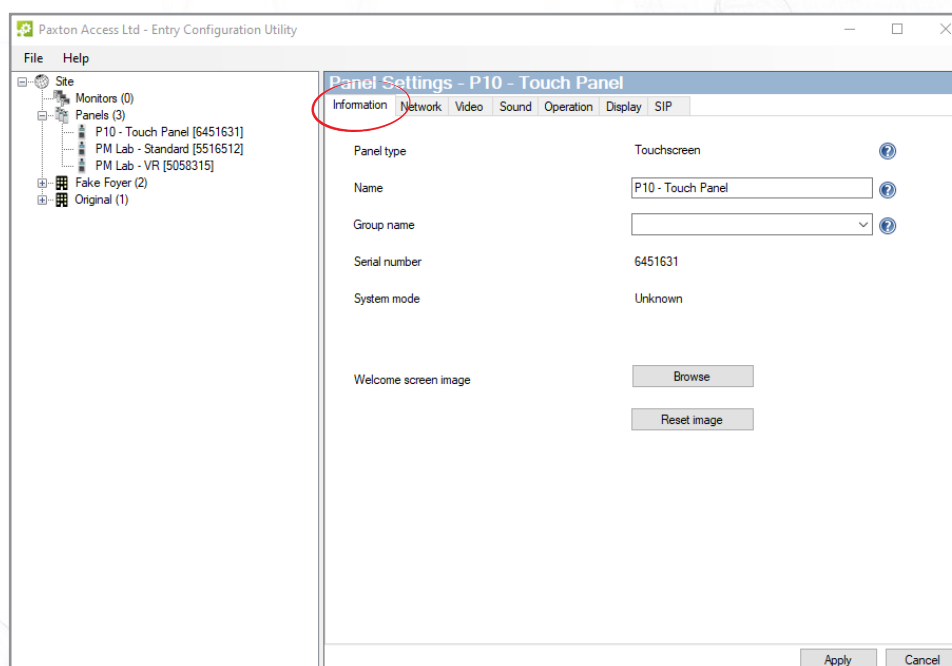
1. Click on the Lock button on the System settings screen.
2. Select the devices to be assigned to the site.
3. Enter a name for the site in the 'Security key' box.
4. Click OK.

The site is now 'Locked' and will be available for logging in.

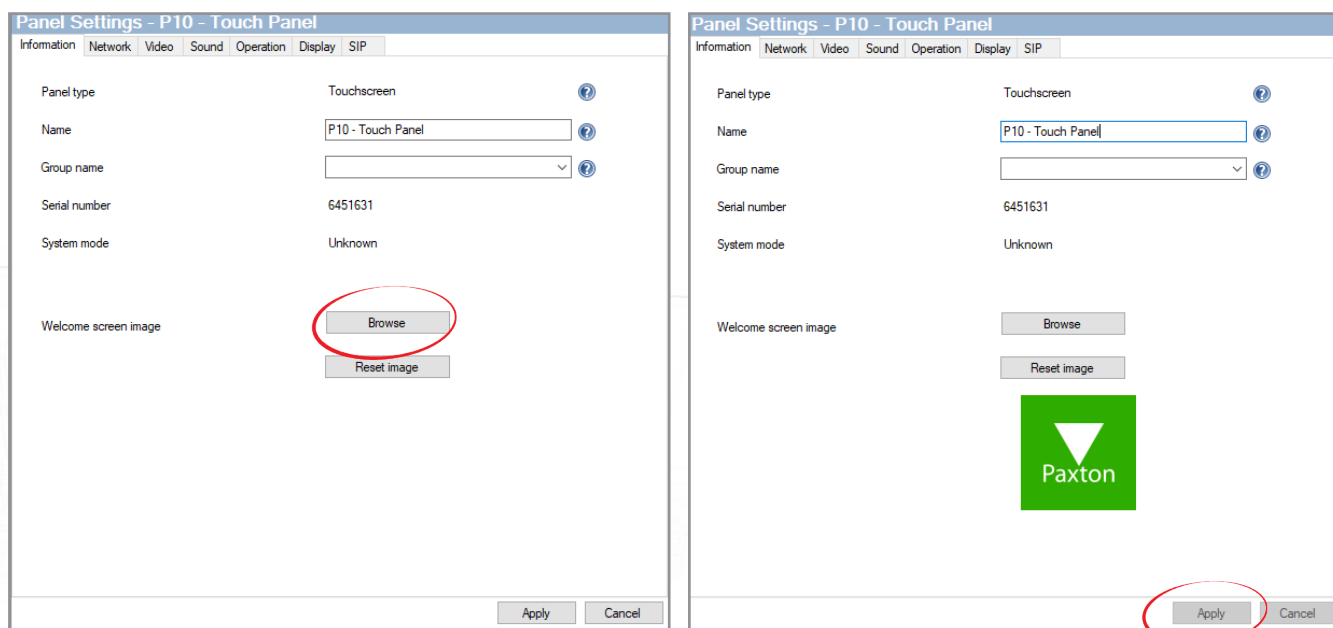
If the site is 'Unlocked' in the future, these devices will return to the default list and will be displayed with the other unassigned devices.

## Welcome Image (Touch Panel Only)

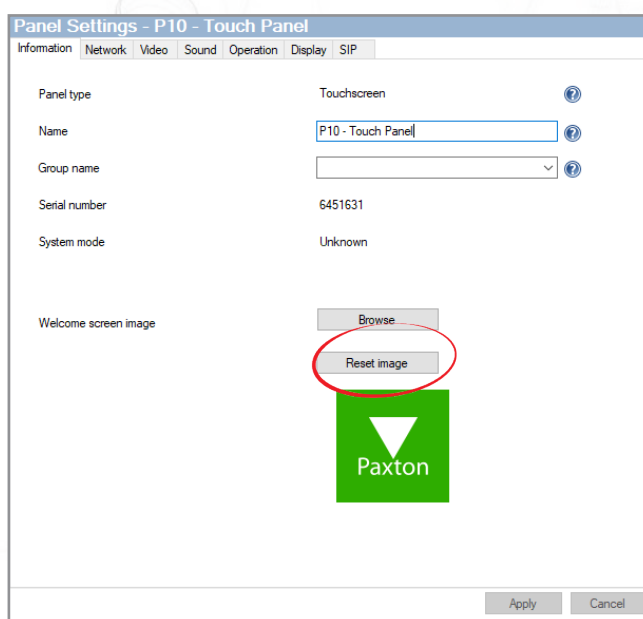
The Paxton Logo on the welcome screen can be replaced with a different image. To do this, navigate to the Touch panel tree menu and select the information tab.



From this screen you can locate a new image by clicking on the 'browse' button. Once a new image has been selected, click on the 'apply' button to send it to the touch panel.



If you wish to revert the image back to the Paxton logo, click on the 'Reset image' button.



Please note: It is recommended to keep the image size under 1MB to ensure it is uploaded quickly. All common image file types are supported such as; jpeg, bmp, png as well as image transparency.

## Monitor Permissions

---

### Alarm options

Viewing alarms can be enabled or disabled. Once enabled, when there is an alarm on the system it will be displayed on this monitor.

**Note:** The door forced alarm and door left open alarm can be disabled individually.

### Allow door unlock

If enabled, the monitor has permission to unlock the door.

### Messaging

If enabled, the monitor has permissions to receive video messages.

**Note:** Once permission has been given, video voicemail can be enabled or disabled via Operation.

### Privacy

For additional security, handsfree and ringback features can be disabled for a specific monitor.