

# Using Landlord Tenant

## Requirements

- Net2 Access control v5.0 or higher
- Requires Net2 Pro software
- System Engineer or Supervisor operator permissions.
- See [www.paxton.info/720](http://www.paxton.info/720) for the minimum PC specifications and compatibility statement

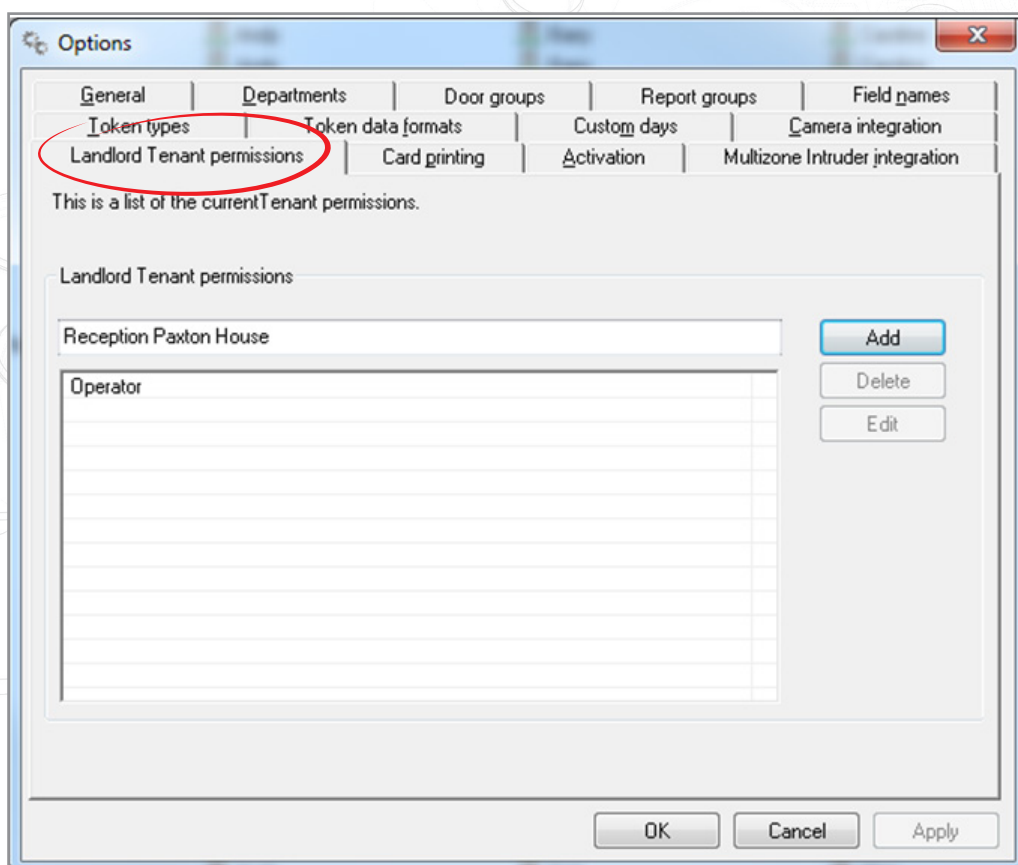
Please note: Paxton Connect Admin is not currently supported for Landlord operators.

## About

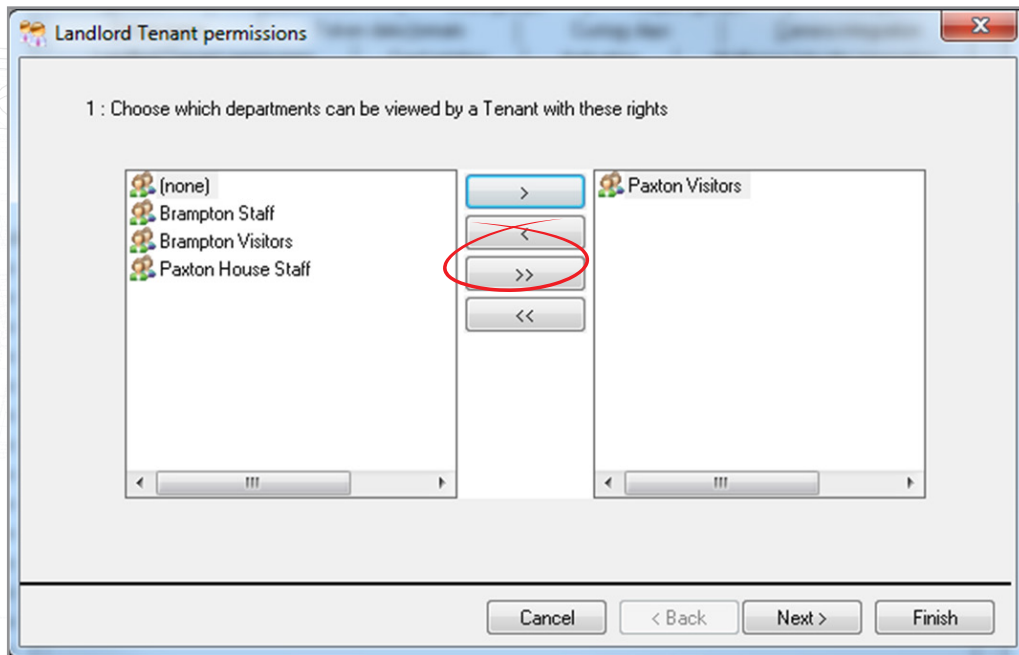
Operators using Net2 software can be restricted in various ways to limit access and enhance security. With the Landlord Tenant operator permissions it is possible to restrict operators to only administer users within specific user departments and apply specific access level permissions.

## Setting up the software

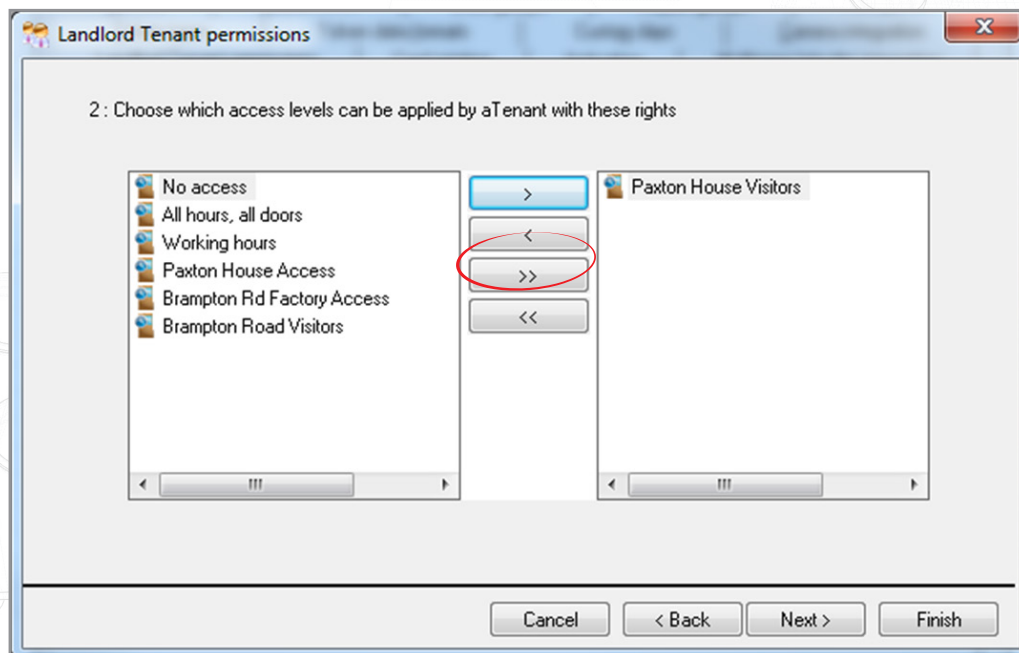
1. Open Net2, select the 'Options' menu, followed by 'Landlord Tenant permissions'.
2. Type the name of the operator you require then select 'Add'.



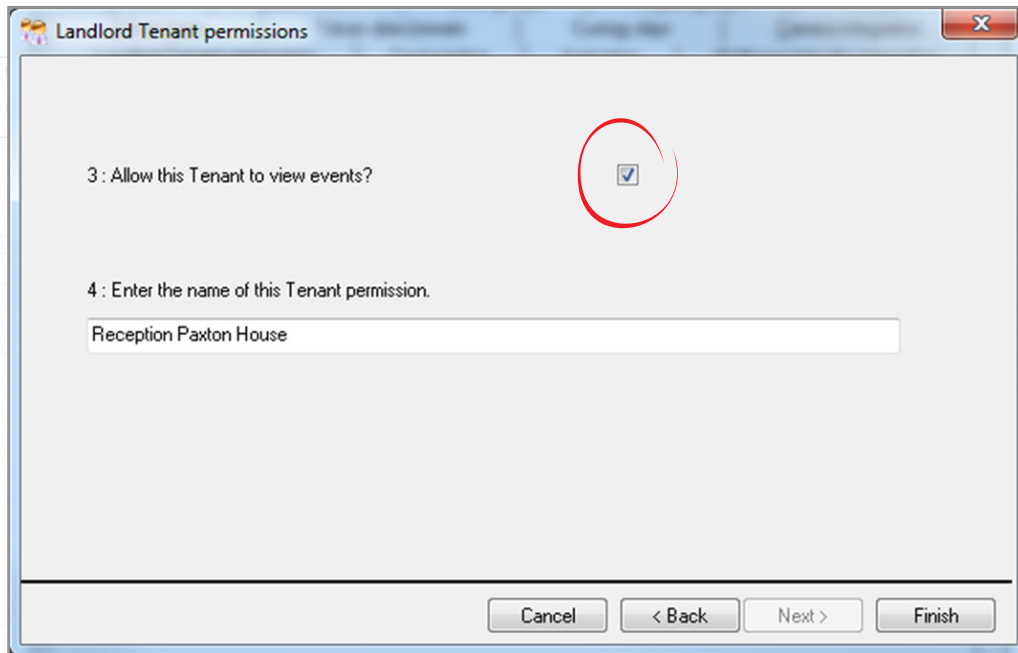
3. Select the departments that will be administered by the operator.



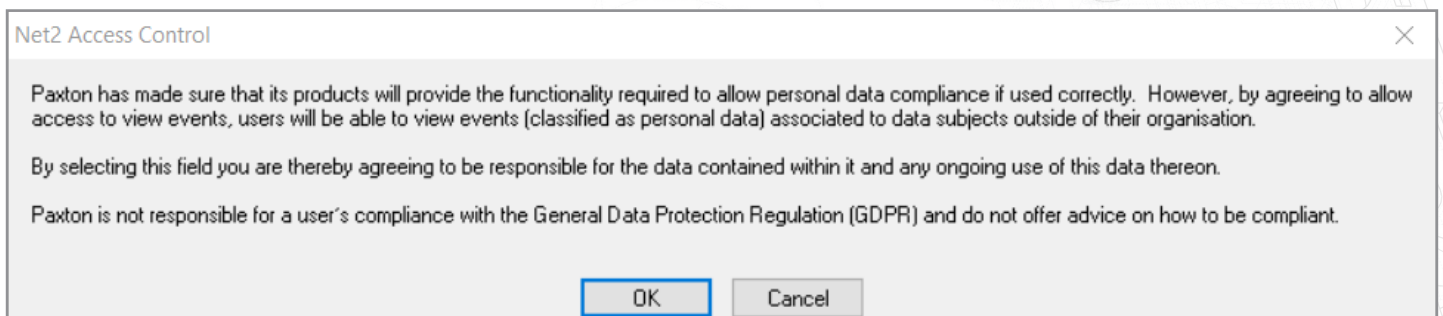
4. Select the Access levels that will be applied to the departments.



5. Choose whether to allow the operator to view the events and reports.



Note: Allowing the Tenant to view events will grant them full search capability to review all events within the system, as well as viewing any pre-existing access report and the ability to create new reports. Please check your local data protection regulations before checking this option, and agree to the displayed warning message when prompted.



6. Once complete, select 'Finish'.

## Operation

A new operator with the permissions created above will now be restricted to simple user administration of the users that are visible. It is possible to create new users.

The created operator privilege can now be applied to a new or existing operator in the operators menu.

Note: Operators with permissions created above will be unable to view live user data in Net2 Card Designer.