

## Door unlock control

### Requirements

- Net2 Access control v5.0 or higher
- See [www.paxton.info/720](http://www.paxton.info/720) for the minimum PC specifications and compatibility statement

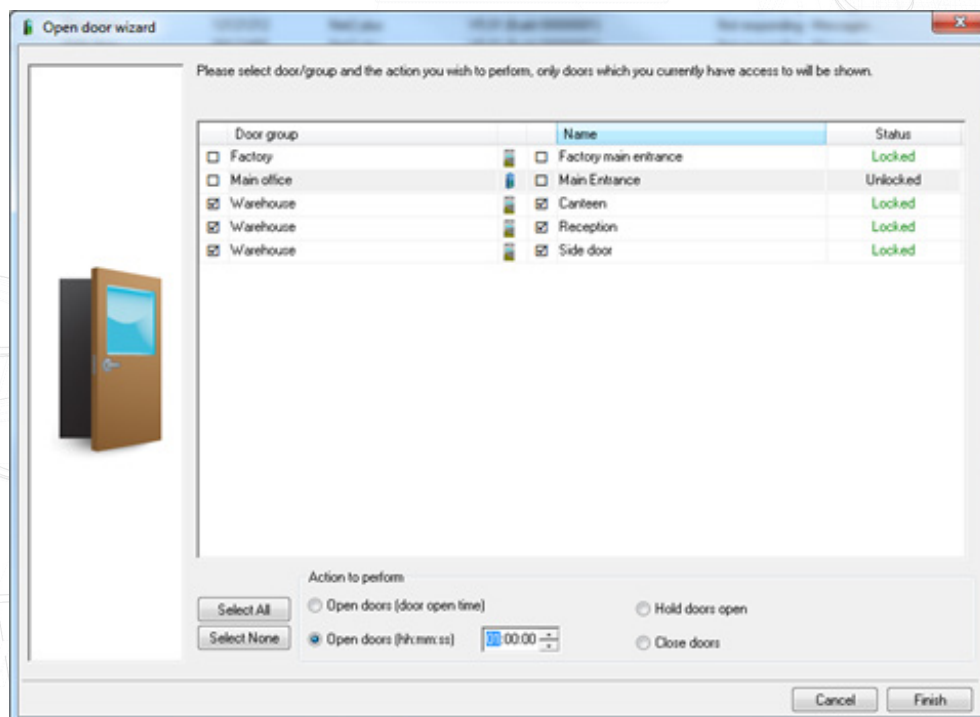
### About

Net2 offers the ability to quickly open and close doors through a simple interface. This is perfect for security personnel who need to virtually chaperone users through a building without giving out tokens, or for sites that have unusual or frequent door open requirements.



### Operation

1. Click the 'Open door' button on the menu bar.
2. The columns show the doors and the groups they belong to, and their current locked or unlocked status.
3. Select the doors and/or door groups you wish to control, and the action you require.



4. In this example, all of the warehouse doors will be unlocked for the next 1 hour.

Note: Only doors that the operator has access to via their access rights will be visible. Doors unlocked via Timezone cannot be overridden and closed using this interface.

## Open door with Paxton Connect Admin or Net2Online

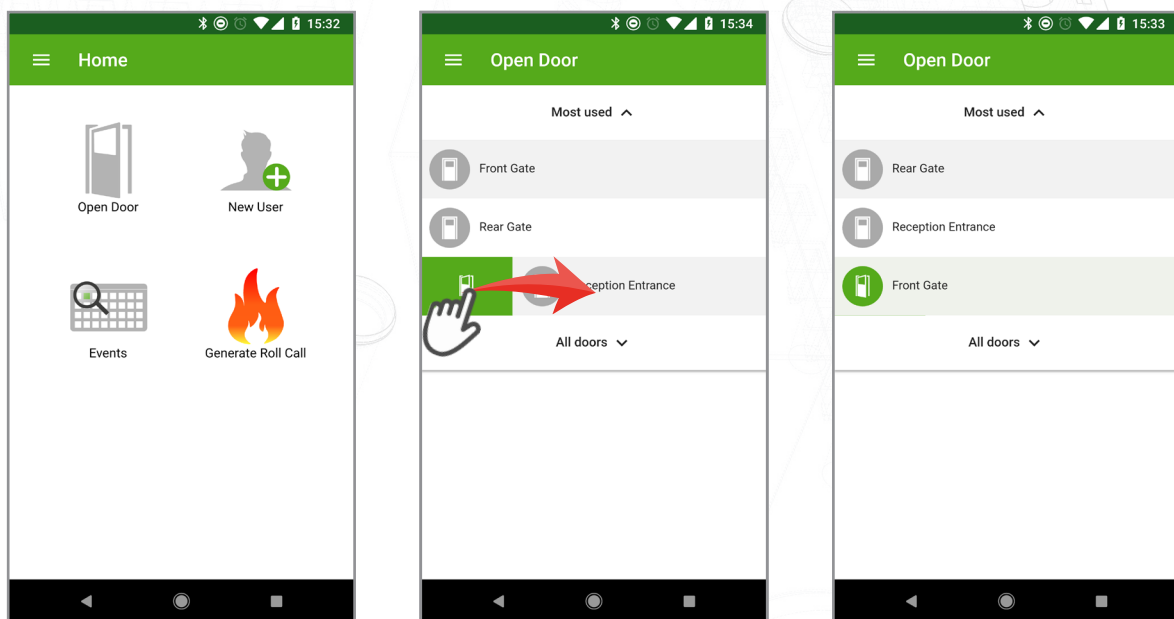
Unlock doors from your smartphone or tablet using the Paxton Connect Admin or Net2Online Web UI.

### Unlock the door

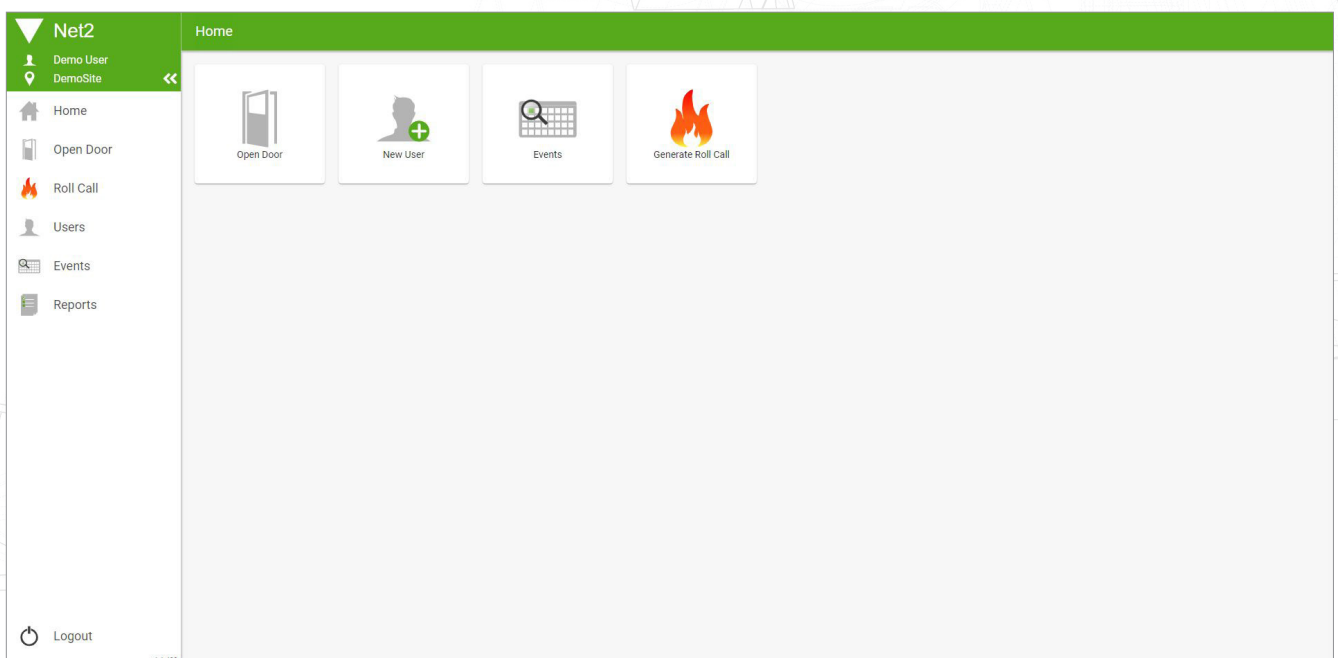
From the Home screen of the app, select 'Open door' to display a list of doors that you have access to. Swipe a door to the right to unlock it for its standard door open time – the door will flash green to confirm.

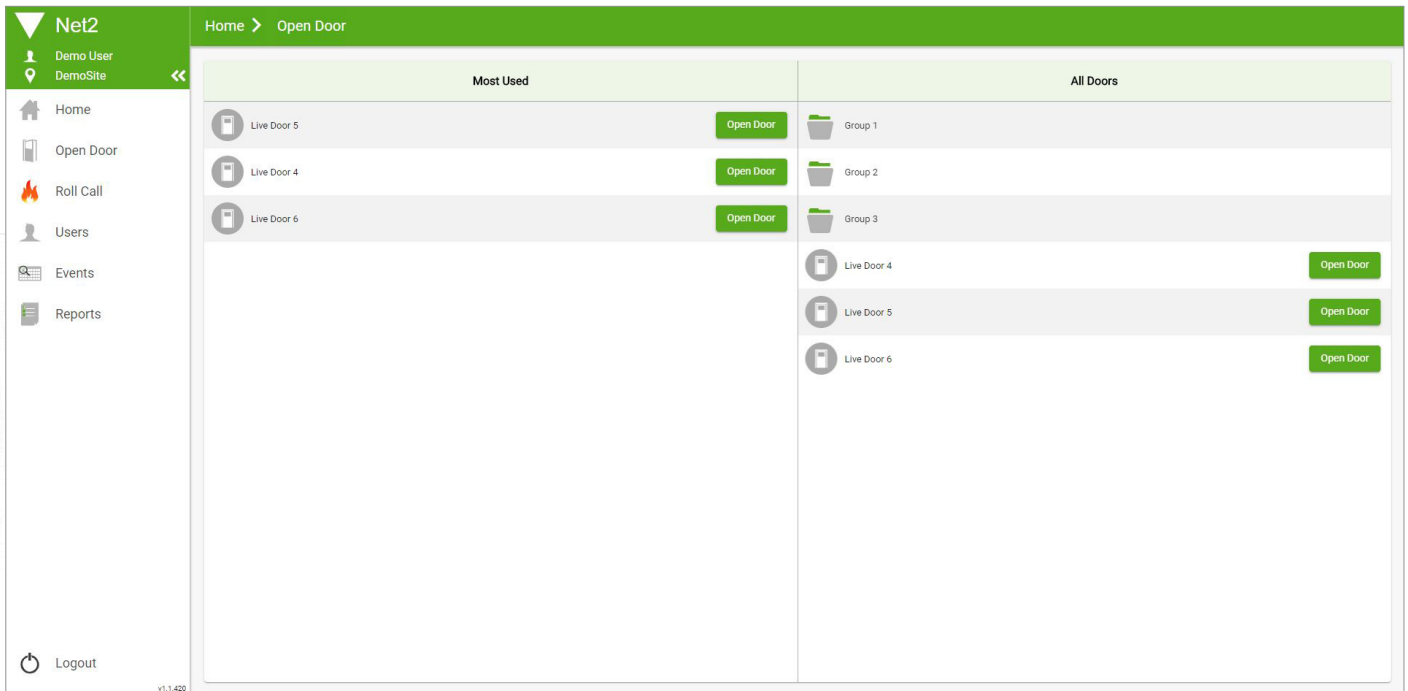
The app can only be used to perform the default door operation and cannot be used to unlock for an extended period, or to lock an unlocked door

### Paxton Connect Admin



### Net2Online Web UI





## Most used

As you use the open-door feature, the app will generate a list of most used doors for quick and convenient access. This list will display the 5 most used doors from the past 30 days.