

Setting temporary access rights

Requirements

- Net2 Access control v5.0 or higher
- See www.paxton.info/720 for the minimum PC specifications and compatibility statement

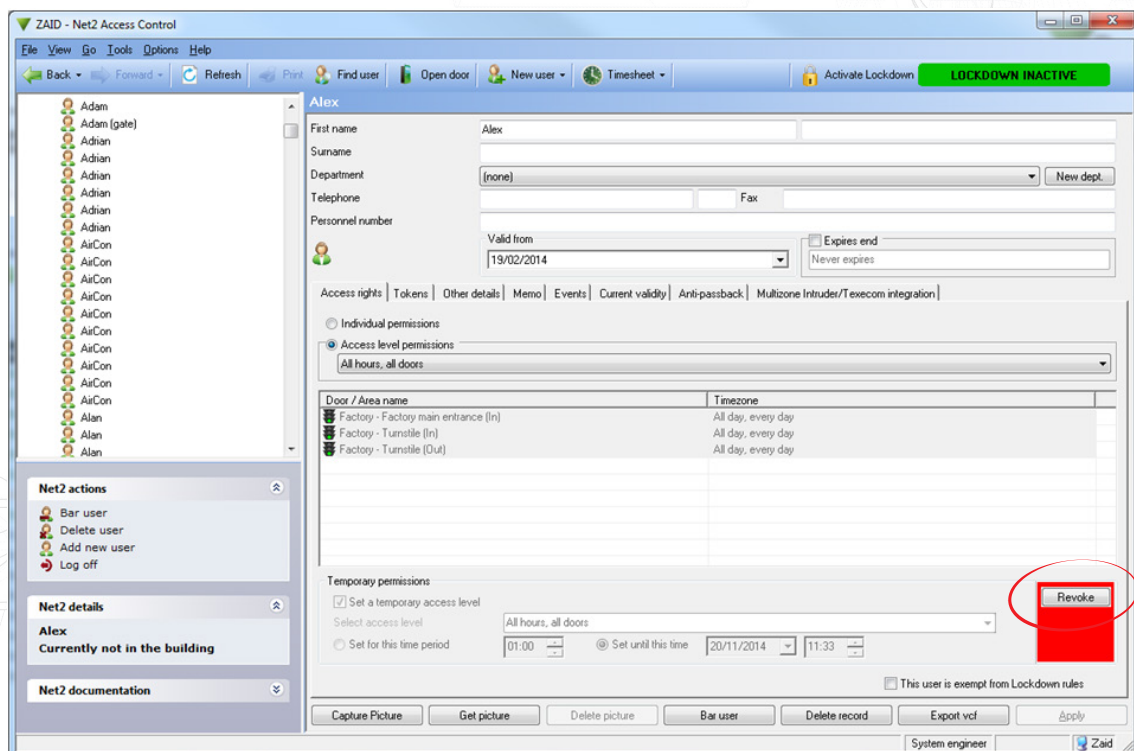
About

Setting temporary access permissions is useful for when you need to upgrade or downgrade a user's access permissions for a set period of time.

A contractor may need temporary access to a meeting room whilst performing maintenance for example.

Operation – configuration within user page

1. In the access rights tab, select the access level you require for the user.
2. Select the time frame you wish this access level to be valid for – after which they will revert back to the access level they had prior to the change.



- It is possible to revert the users' access back to their original level at any time via the revoke button.

Operation – configuration within triggers and actions

Setting temporary access is also possible based on any triggers as part of the triggers and actions functions. See AN1067 <http://www.paxton.co.uk/docs/Application%20notes/AN1067.pdf>

An example of how to use this would be where access to the doors in the centre of the building is only allowed if the user has passed through an entrance door.

1. Select the rule 'When a user is granted access through a door'
2. Follow the wizard steps to select the user or user groups, doors and the relevant timezone that the rule will apply to.
3. Select the 'Allow temporary access' trigger.

