

## Activating Pro software

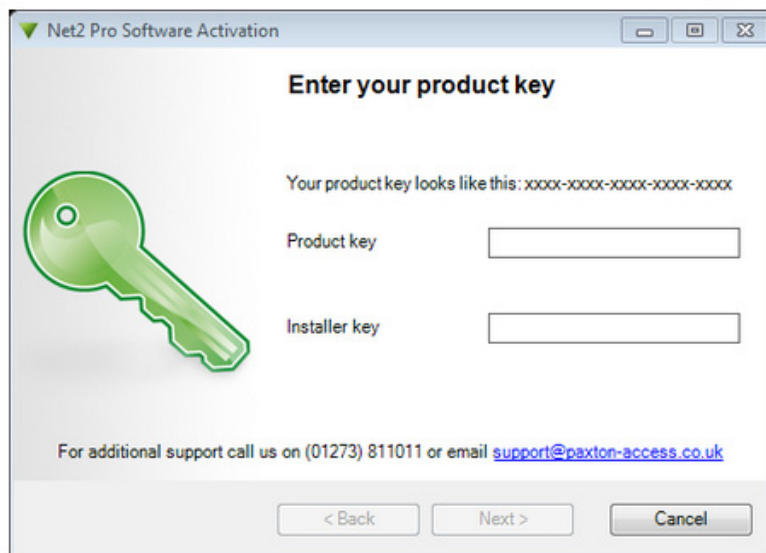
The current specification for compatible PC hardware, network and operating systems is available on our website at the following link:- <http://paxton.info/720>

User name: **System Engineer**

Password: **net2**



1. Double click on the Net2 Access Control icon on the desktop or click Launch at the end of the installation.
2. A window will appear asking you for your Pro Licence Key and Installer Key.



(The Pro key can be found within the cover of the installation DVD. Installer keys can be obtained from the [extranet](#) or by calling Paxton Support)

3. Upon entering this information the software will automatically activate, provided the Net2 server has access to the internet. For offline activation, please call the support line for assistance with activating the software.
4. Once activated, you will be presented with the Net2 logon screen. Should you not wish to activate a Pro Installation, simply click cancel for the system to remain as a Lite version. A warning will appear asking for confirmation that you wish to exit the Pro Activation, click OK to confirm this.
5. You are now ready to begin building your Net2 Access Control system.

Should you wish to upgrade a database older than Net2 V5, please consult Paxton Access Technical support