

Setting up and using action buttons in Net2

Overview

Action buttons allow the user of a monitor to trigger the relays on a Net2 controller, these can be used to turn on a device, such as a sounder or beacon, for a fixed period of time.

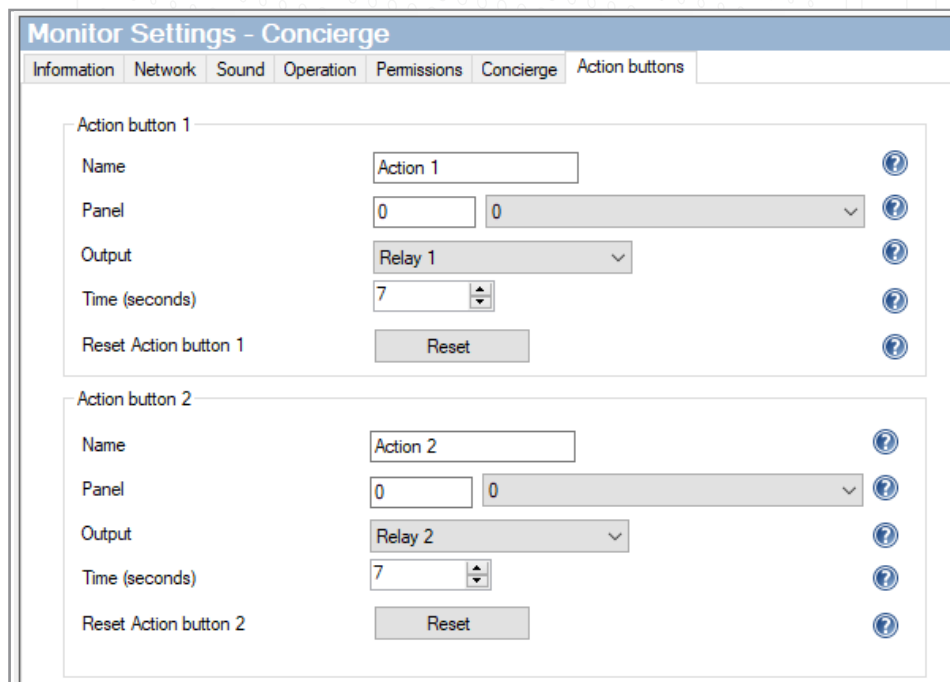
To enable the use of actions buttons all Entry hardware must be running software version 2.19 or later and your Net2 access control system will need to be updated to version 6.00 or higher.



Action buttons

Action buttons can be setup in the Entry Configuration Utility. The buttons can be used to trigger the relays on a controller to fire for a set number of seconds. Each monitor can have up to 2 action buttons configured at a time.

To setup an action button, open the Entry Configuration Utility, select the monitor, and open the '**Action Buttons**' tab. From here each of the 2 buttons can be configured.



Enter a name for the action buttons. It is recommended to name them appropriately for the device they will trigger. This name will appear on the screen for the Premium monitor.

Note: There is a character limit of 12 characters.

To trigger the relays on a controller you will need to select the panel that is connected to that controller. You can either manually enter the serial number of the panel or select the panel from the dropdown box.

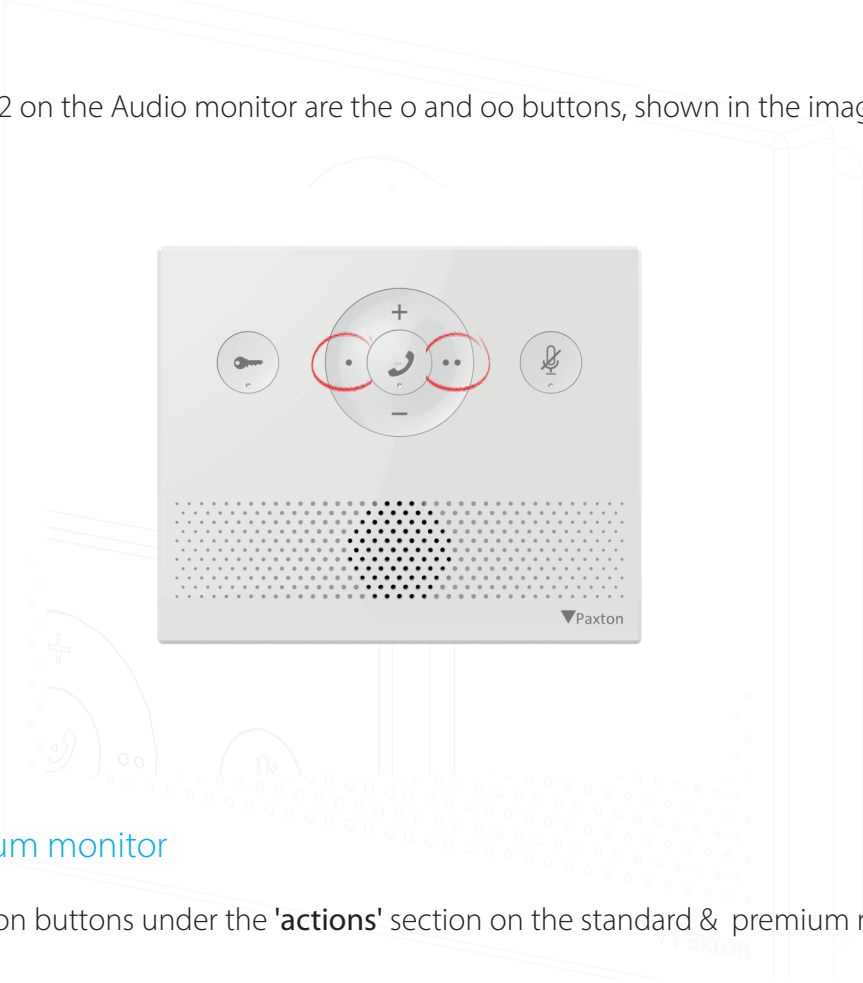
The desired output on the Net2 controller can then be selected; this will be either Relay 1, 2 or the alarm output.

Lastly, select how long the relay will trigger. This can be as short as 1 second or up to 3600 seconds (1 hour).

Action buttons can be reset via the Entry Configuration Utility. To quickly reset action buttons, the Entry system must be on version 2.24 or higher.

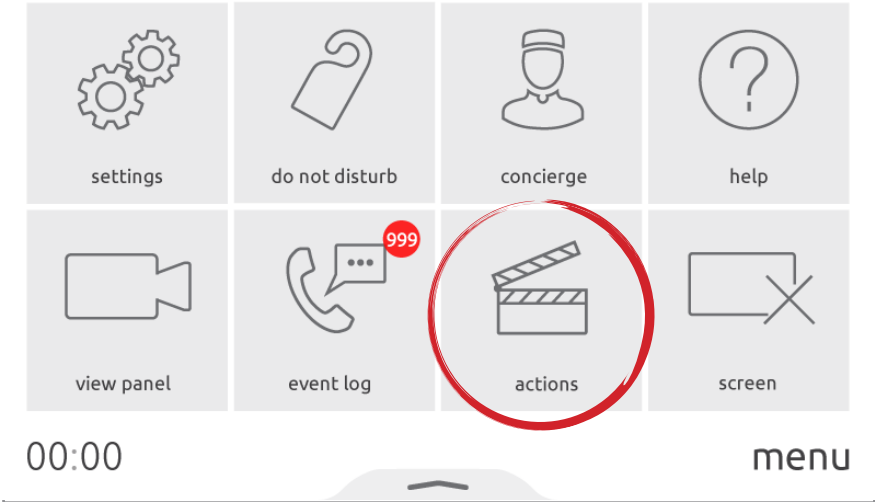
Audio monitor

Action button 1 and 2 on the Audio monitor are the o and oo buttons, shown in the image below.

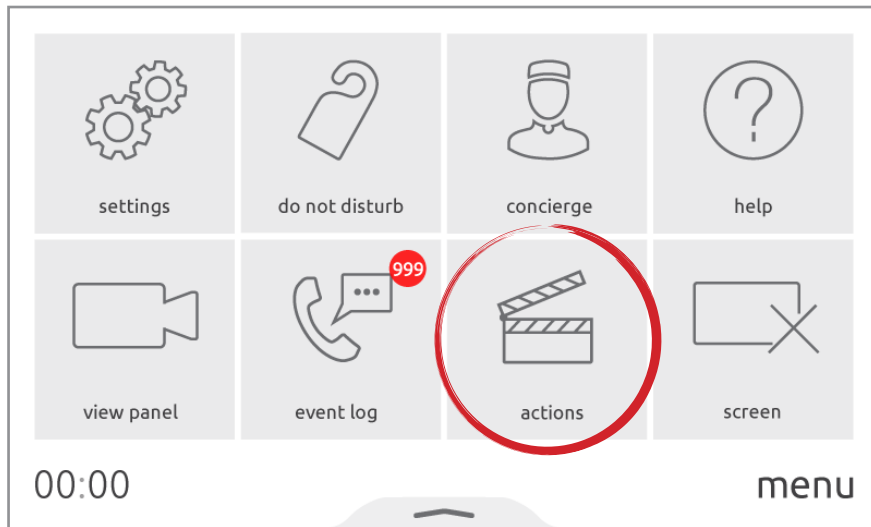


Standard & Premium monitor

You can find the action buttons under the 'actions' section on the standard & premium monitor.



When action buttons have been configured, you can trigger either action button while in a call on either the Standard or Premium monitor.

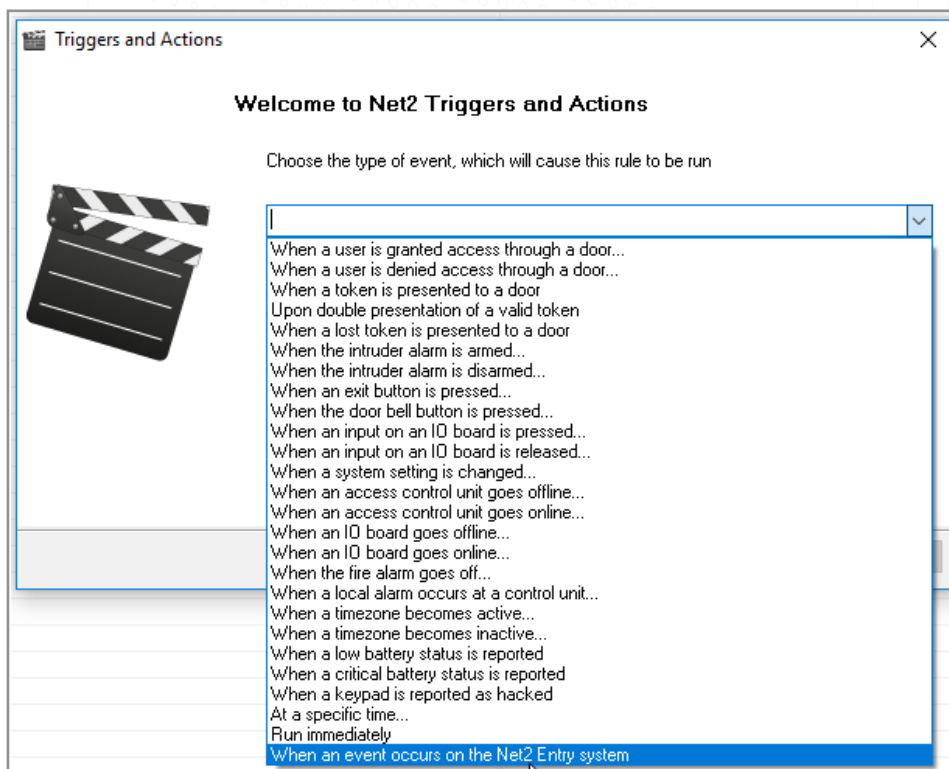


Triggers and Actions in Net2

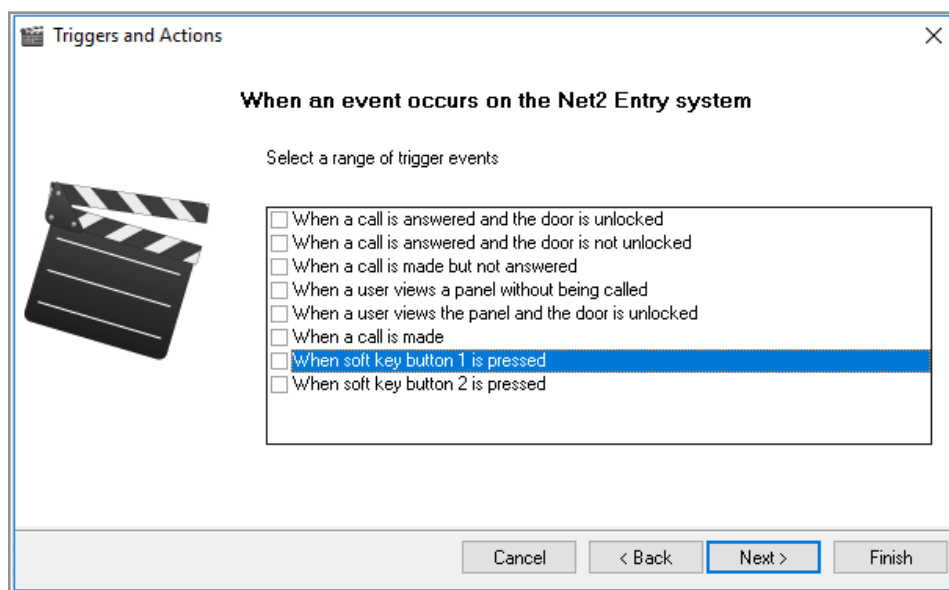
If using an Entry system as part of a bigger Net2 system, then the action buttons on a monitor can be used as a trigger within Net2 for triggers and actions.

For more information on how to setup a trigger and action in Net2 see: Paxton.info/507

To setup a trigger and action with the Entry action buttons, first login to the Net2 software and select Triggers and Actions from the tree view. Click 'Add', then from the dropdown menu select **"When an event occurs on the Net2 Entry system"**.



Click 'Next' and then you can select what trigger from the Entry system you want to use, from here you can select **"When action button 1 is pressed"** or **"When action button 2 is pressed"**.



Note: When using the trigger 'When action button 1/2 is pressed', the monitor being used will also require the corresponding action button to be configured or Net2 will not run the rule

From here you can then follow the wizard through the next screens to configure any additional parameters (door names, time zones, etc...) that will further define that particular trigger event.

The wizard will then ask for the action(s) to be performed when the trigger happens. These options are detailed in the following sections.

Finally, you will need to give the rule a descriptive name and click 'Finish' to save.

Note: Triggers and Actions applied to action button 1 or 2 being pressed will occur when any monitor's action button 1 or 2 is pressed respectively. Any rule setup for this trigger will apply to all monitors on a site and cannot be setup to behave differently for individual monitors.

Troubleshooting

If one of the action buttons is not functioning as intended, the section below highlights a few common problems and their potential solutions.

Problem	Recommendation
<p>I am using the action buttons but the relays are not triggering.</p> <p>If using a Premium or Standard monitor, you will get the message 'action failed, device not found' displayed on the device.</p>	<p>The panel serial number entered in the 'action buttons' section on the monitor in the Entry Configuration Utility is incorrect.</p> <p>Changing the serial number to a valid serial number on your site will fix it.</p>

<p>I am using the action buttons but the relays are not triggering.</p> <p>If using a Premium or Standard monitor , you will get the message 'action failed, controller not connected' displayed on the device.</p>	<p>The control unit serial number entered in the 'Operation' section on the panel in the Entry Configuration Utility is incorrect or the controller is offline.</p> <p>Changing the serial number to a valid serial number of an online controller on your site will fix it.</p>
<p>I am using the action buttons but the relays are not triggering.</p> <p>If using a Premium or Standard monitor, you will get the message 'action sent to device' displayed on the device.</p>	<p>The controller is running on an older version of Net2 that is not compatible with the action buttons feature. You will need to update your Net2 system to version 6.00 or higher.</p>

