

## Plastic housing

### System specifications

Cabinet construction	ABS Plastic
ACU integration	Net2 Plus, Net2 classic, Net2 nano, Switch2, I/O board

### Other hardware features

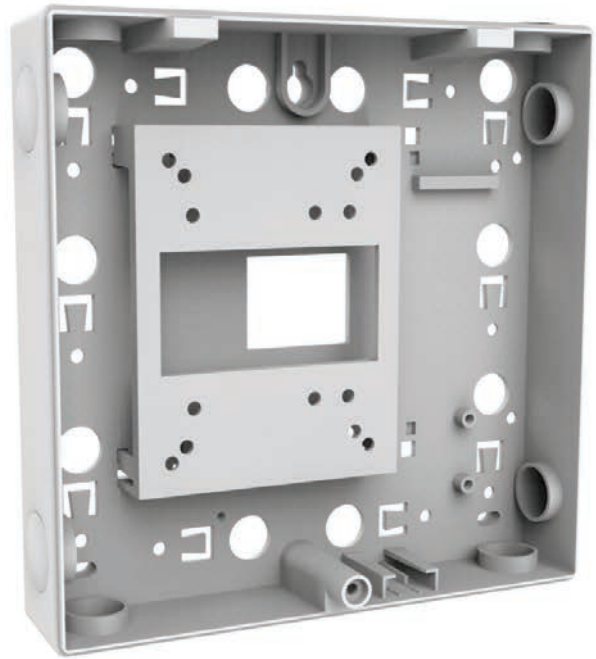
Tamper switch	Yes
Fitting kit	Yes

### Environment

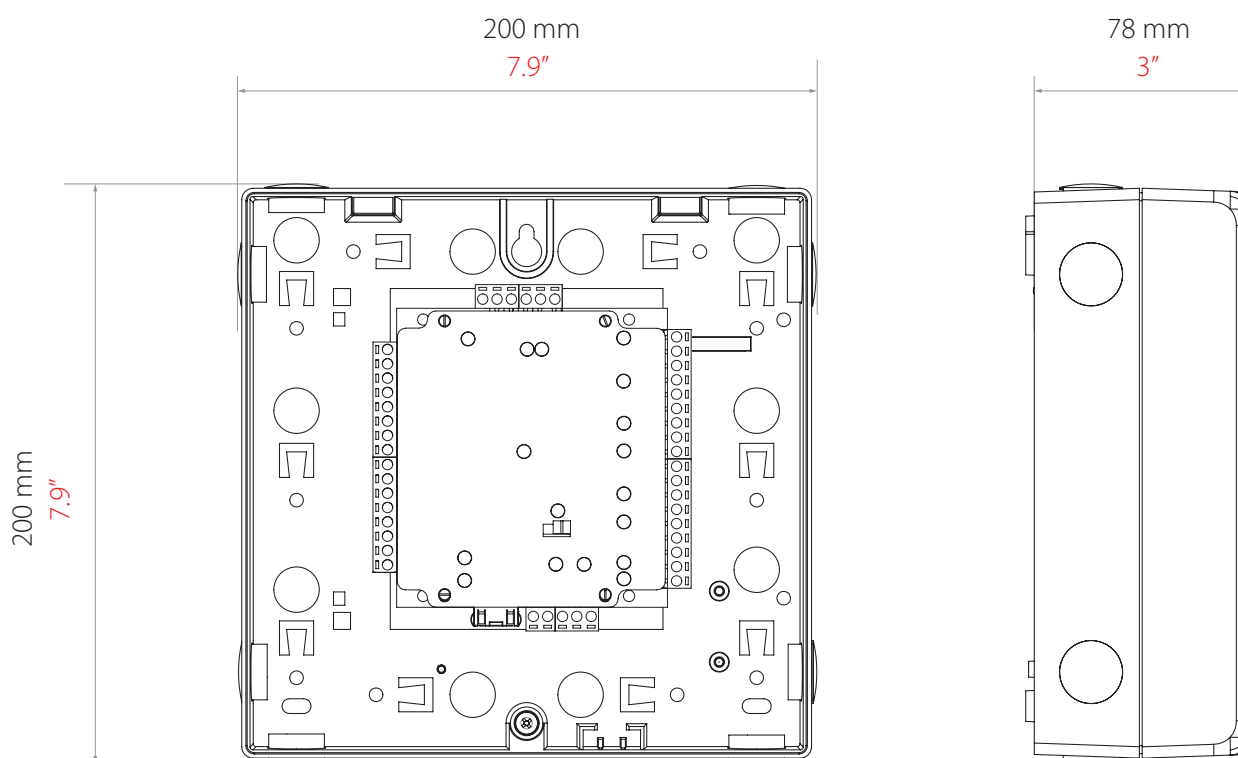
Moisture resistance	No - if used externally, it must be protected in a weatherproof housing
Vandal Resistance	Low

### Certifications

UL 294	682-528-US 654-549-US
--------	--------------------------



The single plastic housing is available for integration with a selection of different Paxton ACU's. A tamper switch is also installed which registers an alarm if the lid is opened when connected to an ACU. If integrating a Switch2 within the plastic housing, the 12V 1A PSU can also be fitted inside the enclosure to power the Switch2 control unit.



## Accessories and sales codes

Net2 Plus - 1 door controller, with Plastic housing

682-528

Net2 - I/O board with Plastic housing

385-710

Switch2 - Controller, 12V 1A PSU, with plastic housing

242-166