

For technical help please contact your distributor

A list of distributors can be found on our website at - <http://paxton.info/508>

Documentation on all Paxton products can be found on our website - <http://www.paxton.co.uk/>

Suitability

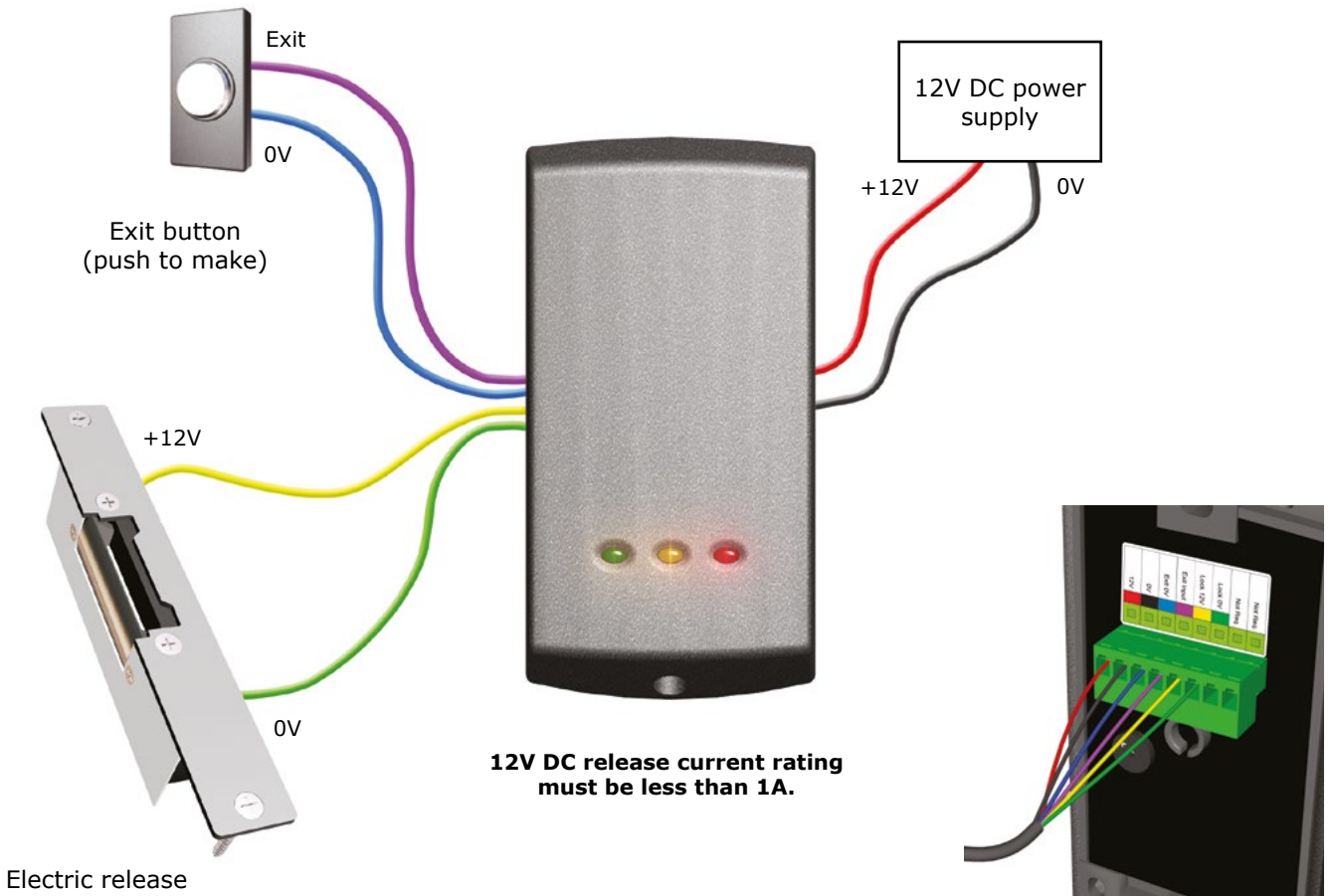
Security-sensitive doors

Wet environments

Mounted on metal surface

Readers mounted together **300 mm**
between readers

Quickstart guide



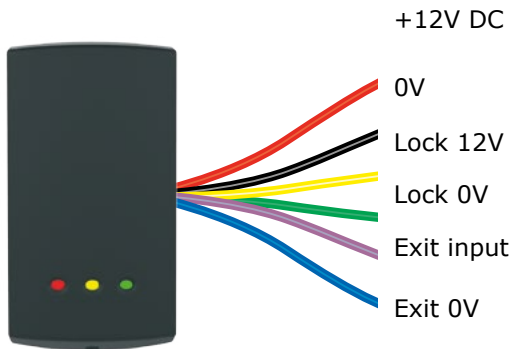
P75 Screw connector option

The unit should be mounted in conjunction with an electrical backbox to achieve the required clearance for the connector.

If an adaptor plate (310-750) is fitted, the mountings on the backbox can also be used.

Indoor use only

Wiring



Reset - Use one method

1. Power down the unit.
 2. Press and hold the exit button.
 3. Power up the unit. It will give several quick beeps.
 4. Wait for a further beep and then release and press the exit button twice more.
 5. The reader will beep 3 times to confirm the reset.
- OR
1. Present Enrolment card.
 2. Present Door open time card twice.
 3. Present Enrolment card.
 4. Present Door open time card twice.
 5. WAIT FOR 5 SECONDS!

Fitting



Reader covers

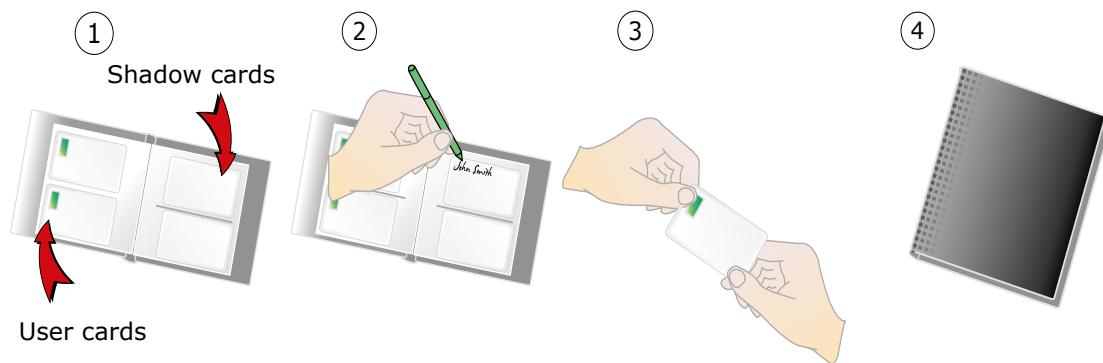
Additional covers are available in black and white. Registered installers can order these free of charge by logging onto the secure installer extranet: <http://paxton.info/1035> or if you are not a registered installer please call us on: **01273 811011** for more information.

Enrolment Card - must be presented when the system is first powered on



1. Take the enrolment card from the new pack of user cards.
2. Present the enrolment card to the reader.
3. The reader beeps and the LED's light up as the enrolment card is acknowledged.
4. All cards in the pack are now valid. The enrolment card can now be returned to it's pack.

Issuing tokens



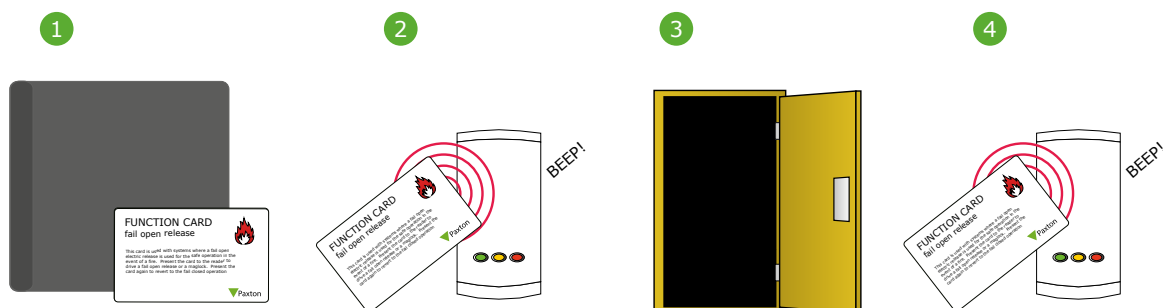
1. Across each double page there are pairs of cards - a user card and a corresponding shadow card.
2. Write the name of the user on the shadow card.
3. Take the user card from the opposite pouch and issue to the user.
4. Keep the card pack containing the shadow cards in a safe place.

Bar a user



1. When a card is lost or stolen it is important to bar the card from your system to avoid unauthorized access.
2. To bar a card or token take it's corresponding shadow card from the card pack.
3. Present the shadow card to the reader. This will remove the lost card or token from your system.
4. A barred card can re-validated by presenting the enrolment card followed by the user card to the reader.

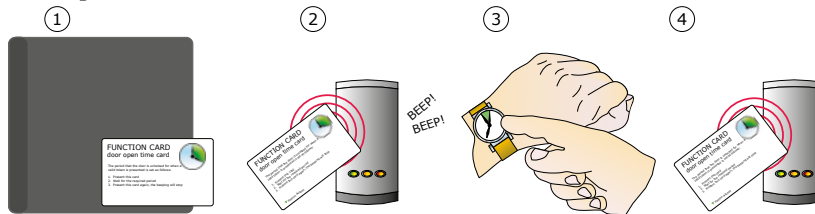
Fail open release card - Compact systems are fail closed as default



THIS CARD CAN ONLY BE USED WITH A FAIL OPEN LOCK.

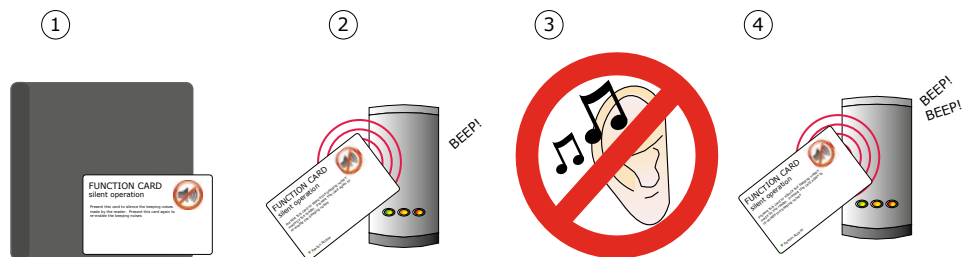
1. Take the fail open release function card from the starter pack.
2. Present/swipe the card through the reader. The reader will beep for about a second.
3. The reader is now set to fail open mode. This allows safe operation of the door in case of fire: The lock will release when the power is cut.
4. To revert to fail closed mode, swipe the card again and the reader will beep once.

Door open time (seconds)



1. Take the 'door open time' card from the starter pack.
2. Present the card to the reader. The reader will start beeping.
3. Wait for the required period you wish the door to remain open.
4. Present the card again at the end of the period to set the open time. The beeping will stop.

Silent operation



1. Take the silent operation function card from the starter pack.
2. Present the card to the reader. The reader will beep.
3. The reader is now in silent operation mode.
4. Present the card again to disable silent operation mode. The reader will beep twice.

Specifications

Specifications			
Features	Min	Max	
Number of Users	1	10,000	
Number of Card Packs	1	100	
Door open time	1 sec	60 secs	
Time zones (with additional time clock)	1	2	
Access levels (Colour Zones)	1	3	
Silent operation			Yes
Can be used with fail OPEN locks			Yes
Can be used with fail CLOSED locks			Yes
Exit button input			Yes
Electrical	Min	Max	
Voltage	11V DC	14V DC	
Current		100 mA	
Switchable current		1A	
Environment	Min	Max	
Operating temperature	-20 °C	+55 °C	
Waterproof - Fixed cable	IPX7		Outdoor use
Waterproof - P75 - Screw connection			Indoor use
Read Range	Token	Keyfob	
P38	60 mm	40 mm	
P50	80 mm	50 mm	
P75	100 mm	60 mm	
Dimensions	Width	Height	Depth
P38	38 mm	78 mm	13 mm
P50	50 mm	100 mm	15 mm
P75	75 mm	143 mm	16 mm

Paxton Access Ltd hereby declares that this product is in conformity with all the essential requirements of the Directive 2014/53/EU.

<http://paxton.info/4867>

The full declaration of conformity is provided at: <http://paxton.info/3910>

Contact details are provided at: <http://paxton.info/596>