


Technical Support


 1.800.672.7298


 supportUS@paxton-access.com

Technical help is available: Monday - Friday from 02:00 AM - 8:00 PM (EST)

Documentation on all Paxton products can be found on our web site - <http://www.paxton-access.com/>

Suitability

Security sensitive doors 

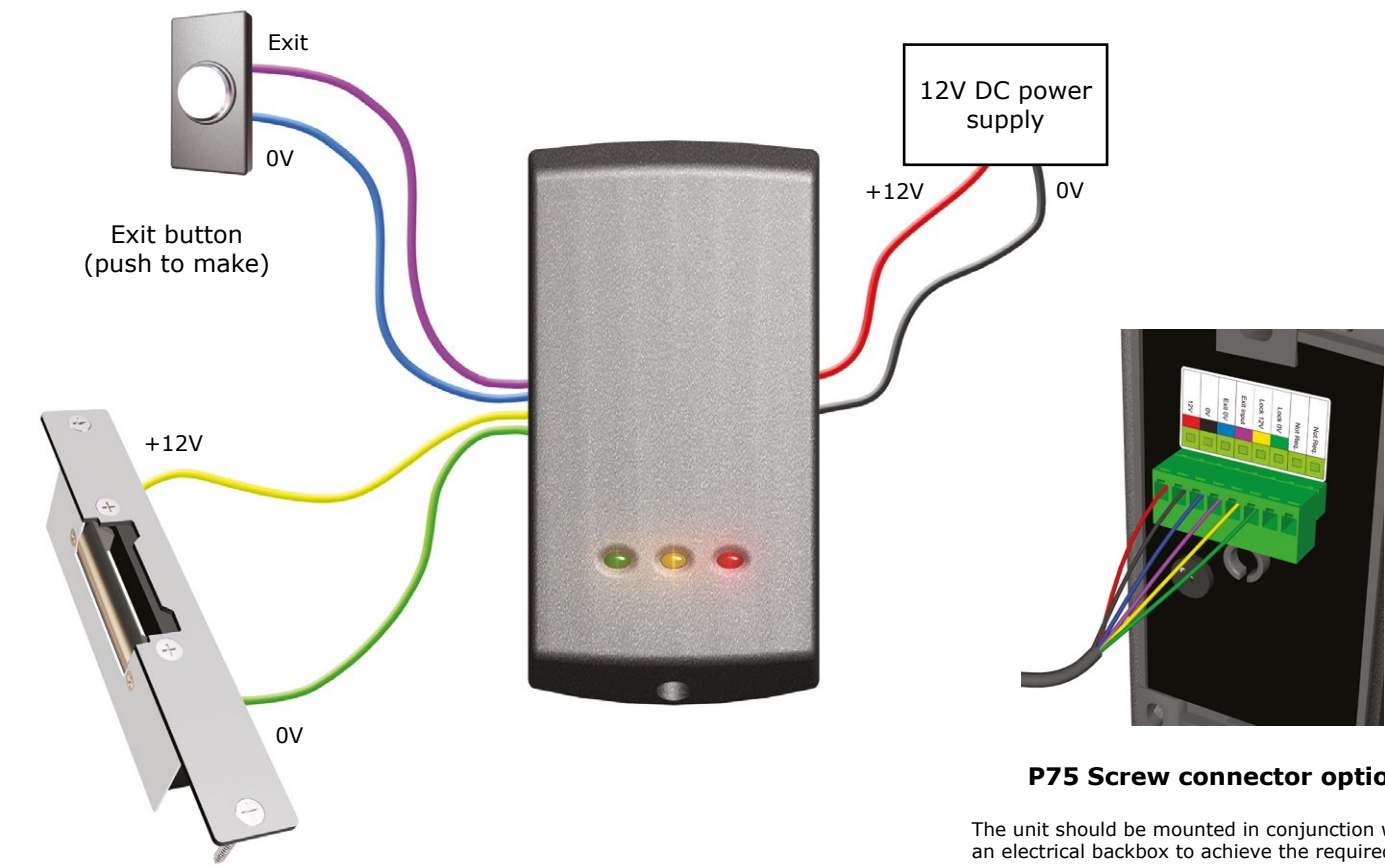
Wet environments 

Mounted on metal surface 

Readers mounted together **12 inches** between readers

Quickstart guide

This supplement is a brief guide to installing a P series compact system. Advanced features such as card zoning are not covered in this guide. For further information, a full installation manual is available on the website.



P75 Screw connector option

The unit should be mounted in conjunction with an electrical backbox to achieve the required clearance for the connector.

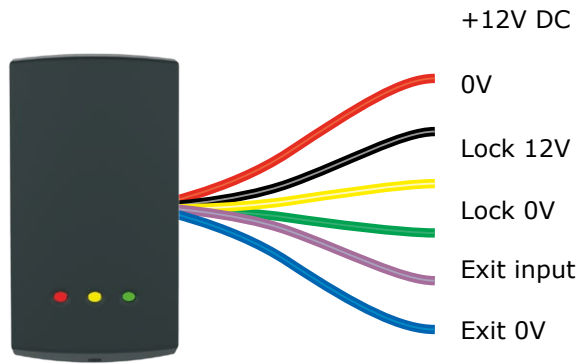
If an adaptor plate (310-750-US) is fitted, the mountings on the backbox can also be used.

Indoor use only

Electric release

12V DC release current rating must be less than 1A.

Wiring



Reset - Use 1 method

1. Power down the unit.
 2. Press and hold the exit button.
 3. Power up the unit. It will give several quick beeps.
 4. Wait for a further beep and then release and press the exit button twice more within 3 seconds.
 5. The reader will beep 3 times to confirm the reset.
- OR
1. Present Enrolment card.
 2. Present Door open time card twice.
 3. Present Enrolment card.
 4. Present Door open time card twice.
 5. WAIT FOR 5 SECONDS!



Mounting

Reader covers

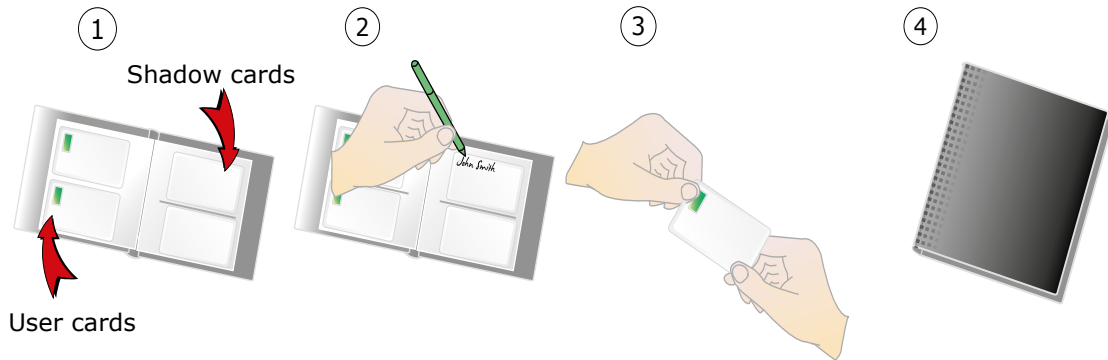
Additional covers are available in black, white, grey, blue and silver. Registered installers can order these free of charge by logging onto the secure installer extranet: <http://paxton.info/1035>. If you are not a registered installer please call us on: 877.438.7298 for more information.

Enrolment Card - must be presented when the system is first powered on



1. Take the enrolment card from the new pack of user cards.
2. Present the enrolment card to the reader.
3. The reader beeps and the LED's light up as the enrolment card is acknowledged.
4. All cards in the pack are now valid. The enrolment card can now be returned to its pack

Issuing tokens



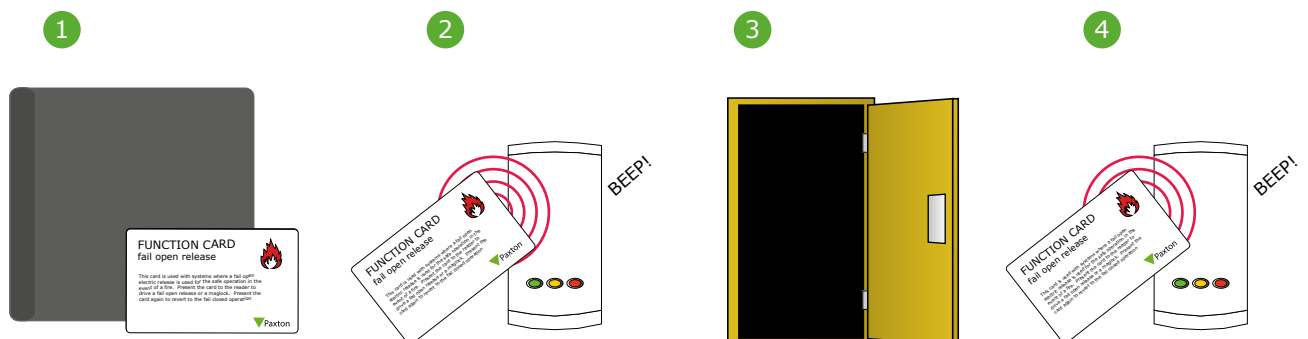
1. Across each double page there are 'pairs' of cards - a 'User card' and a corresponding 'Shadow card'.
2. Write the name of the user on the shadow card.
3. Take the user card from the opposite pouch and issue to the user.
4. Keep the card pack containing the shadow cards in a safe place.

Bar a user



1. When a card is lost or stolen it is important to bar the card from your system to avoid unauthorized access.
2. To bar a card or token take it's corresponding shadow card from the card pack.
3. Present the shadow card to the reader. This will remove the lost card or token from your system.
4. A barred card can re-validated by presenting the enrolment card followed by the user card to the reader.

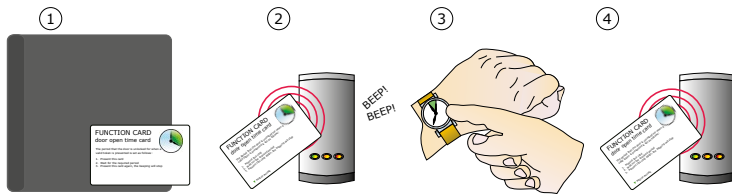
Fail open release card - Compact systems are fail closed as default



THIS CARD CAN ONLY BE USED WITH A FAIL OPEN LOCK.

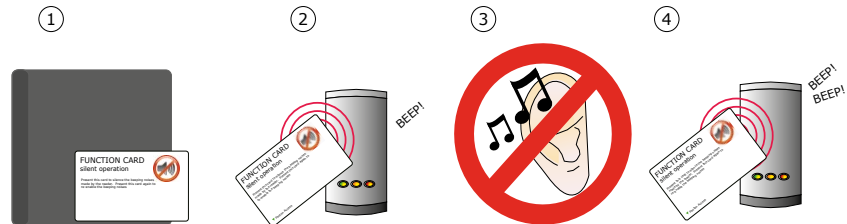
1. Take the fail open release function card from the starter pack.
2. Present/swipe the card through the reader. The reader will beep for about a second.
3. The reader is now set to fail open mode. This allows safe operation of the door in case of fire: The lock will release when the power is cut.
4. To revert to fail closed mode, swipe the card again and the reader will beep once.

Door open time (seconds)



1. Take the door open time function card from the starter pack.
2. Present the card to the reader. The reader will start beeping.
3. Wait for the required period you wish the door to remain open.
4. Present the card again at the end of the period to set the open time. The beeping will stop.

Silent operation



1. Take the silent operation function card from the starter pack.
2. Present the card to the reader. The reader will beep.
3. The reader is now in silent operation mode.
4. Present the card again to disable silent operation mode. The reader will beep twice.

Specifications

Specifications			
Electrical	Min	Max	
Voltage	11V DC	14V DC	
Current		100mA	
Switchable current		1A	
Environment	Min	Max	
Operating temperature	-20 °C (-4 °F)	+55 °C (+131 °F)	
Waterproof - Fixed cable	IPX7		Outdoor Use
Waterproof - P75 - Screw connection			Indoor use
Features	Min	Max	
Number of Users	1	10,000	
Number of Card Packs	1	100	
Door open time	1 sec	60 secs	
Time zones (with additional time clock)	1	2	
Access levels (Color Zones)	1	3	
Silent operation			Yes
Can be used with fail OPEN locks			Yes
Can be used with fail CLOSED locks			Yes
Exit button input			Yes
Dimensions	Width	Height	Depth
P38	1 1/2 inch	3 inch	1/2 inch
P50	2 inch	4 inch	5/8 inch
P75	3 inch	5 1/2 inch	5/8 inch

FCC Compliance

This device complies with Part 15 of the FCC Rules. Operation is subject to the following two conditions: (1) this device may not cause harmful interference, and (2) this device must accept any interference received, including interference that may cause undesired operation.

Changes or modifications not expressly approved by the party responsible for compliance could void the user's authority to operate the equipment.

NOTE:

This equipment has been tested and found to comply with the limits for a Class B digital device, pursuant to part 15 of the FCC Rules. These limits are designed to provide reasonable protection against harmful interference in a residential installation. This equipment generates, uses and can radiate radio frequency energy and, if not installed and used in accordance with the instructions, may cause harmful interference to radio communications. However, there is no guarantee that interference will not occur in a particular installation. If this equipment does cause harmful interference to radio or television reception, which can be determined by turning the equipment off and on, the user is encouraged to try to correct the interference by one or more of the following measures:

- Reorient or relocate the receiving antenna.
- Increase the separation between the equipment and receiver.
- Connect the equipment into an outlet on a circuit different from that to which the receiver is connected.
- Consult the dealer or an experienced radio/TV technician for help.