

 Paxton

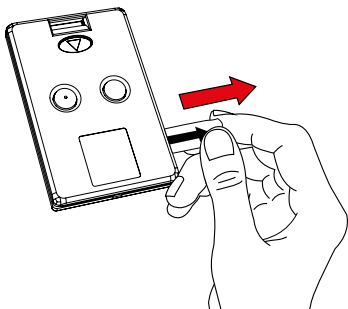


ins-30037





1



Interface Settings

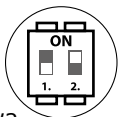
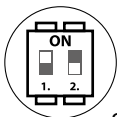
To enable the buttons, the keycard must first be presented to the P series reader and then used in hands free mode. The keycard stores the details of this interface and can then activate the door using a button.

A keycard can be used in normal hands free mode and also in local passive mode with other Paxton readers.

The hands free interface has a pair of switches labelled SW2. Select either switch 1 or 2 to set which button the interface will respond to.

Power cycle the interface to store this setting.

The keycard can store up to 60 doors, thirty for each button.



SW2

Hands free interface Switch settings



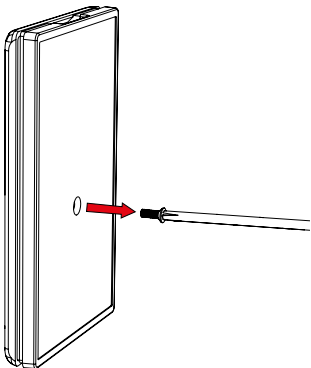
Battery replacement

The keycard has been designed with features to maximise battery life. These include a two second timeout once access has been granted and the prevention of repeated access requests to the same door whilst the keyfob remains in range. However, heavy use or keeping the keyfob in the reader field can still reduce battery life to 12 months or less.

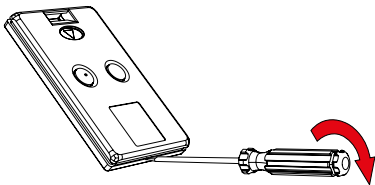
Remove the small round label and the screw on the back of the card. Open the case by inserting a flat head screw driver in the slot at the bottom of the card and gently prising the case open. Remove the circuit board and replace the batteries. Replace the circuit board, casing cover, screw and label.



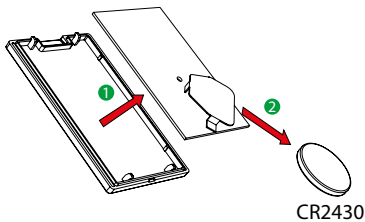
1



2



3



Specifications

		Min	Max
Dimensions			
Width	54mm		
Length	85mm		
Depth	9mm		
Electrical			
	125kHz		
	2.4Ghz		
Environment			
		0°C	55°C
System Specifications			
		1 year	
	CR2430		
Read range with hands free keycard			
The distance between hands free interface and the reader must be no more than 15m			
P38			0.85m
P50			1.1m
P75			1.5m
P200			2.5m
P200 metal mount			2.0m
Long range reader			5.0m
With button - all readers			>5.0m

Handsfree Cards and Fobs have been tested to give a realistic representation of read ranges users can expect to see when taking into consideration different environmental factors.

P Series				
	On Lanyard	In pocket	In pocket with GSM	Button Control: handsfree
P38	0.40m	0.30m	0.00m	20-25m
P50	0.50m	0.40m	0.30m	20-25m
P75	0.80m	0.50m	0.40m	20-25m
P200	1.80m	1.00m	0.50m	20-25m
P200M	1.80m	1.00m	0.50m	20-25m
Long Range	5.00m	1.50m	1.00m	20-25m

Conformity



Paxton Access Ltd hereby declares that this product is in conformity with all the essential requirements of the Directive 2014/53/EU.

<http://paxton.info/4867>

The full declaration of conformity is provided at:


<http://paxton.info/3910>

Contact details are provided at: <http://paxton.info/596>


These products are not suitable for retail sale. All warranties are invalid if these products are not installed by a competent person.

Technical Support



 +44 (0)1273 811011

 support@paxton.co.uk

 [paxton.support](https://www.paxton.support)



Made in the UK

