

## Entry - Using a secondary IP camera

### Requirements

- Entry v2.12 or higher
- ONVIF compliant camera
- H.264 video compression

See [www.paxton.info/720](http://www.paxton.info/720) for the minimum PC specifications and compatibility statement

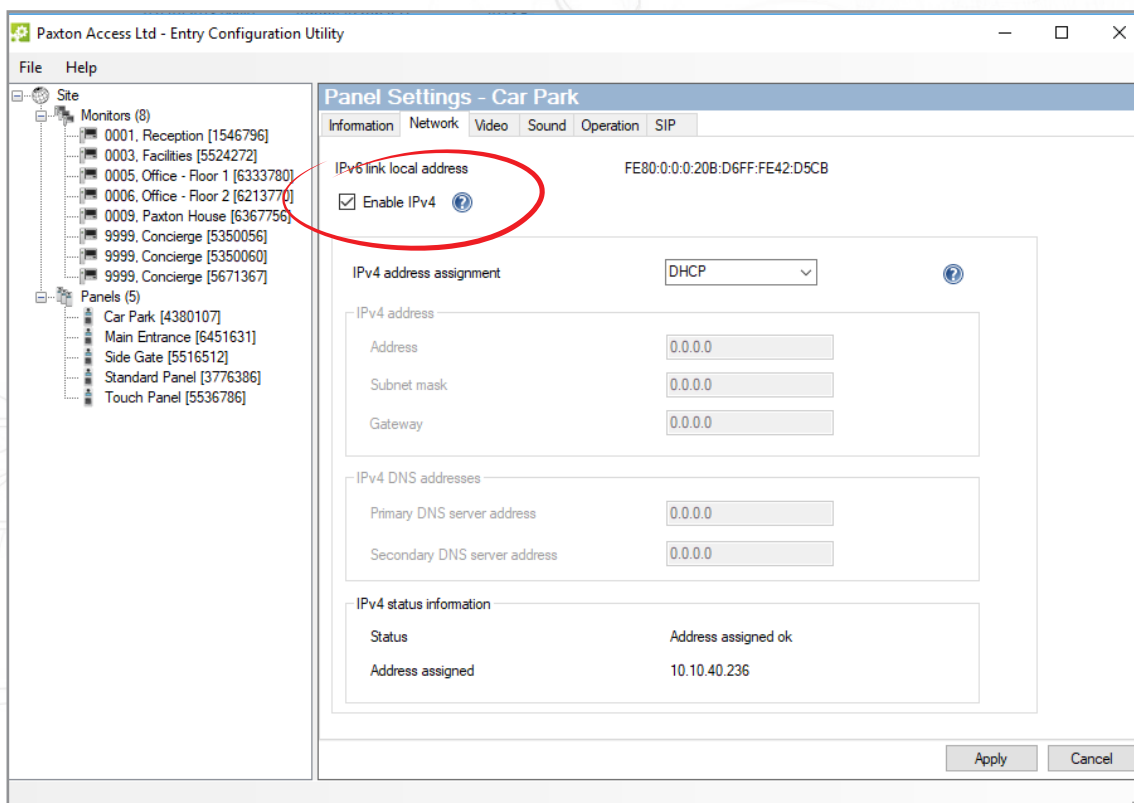
### Firmware

Firstly, make sure all of the equipment being used is running the latest version of firmware.

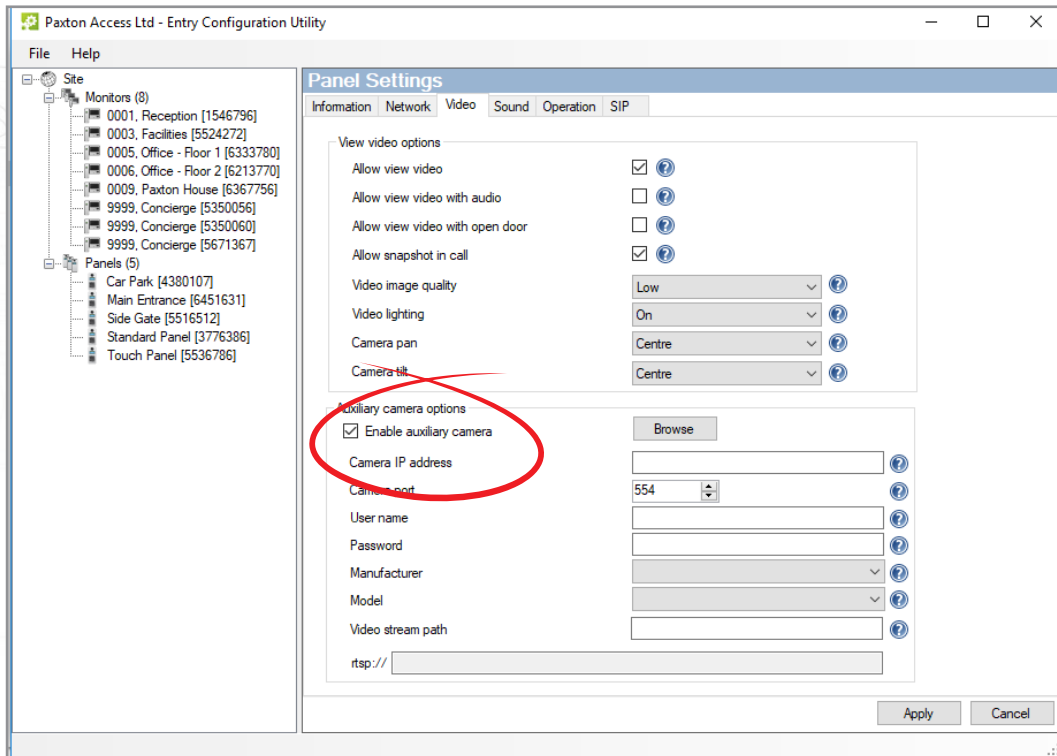
The latest Entry software can be downloaded here: [www.paxton.info/1907](http://www.paxton.info/1907)

### Setting up a secondary IP camera

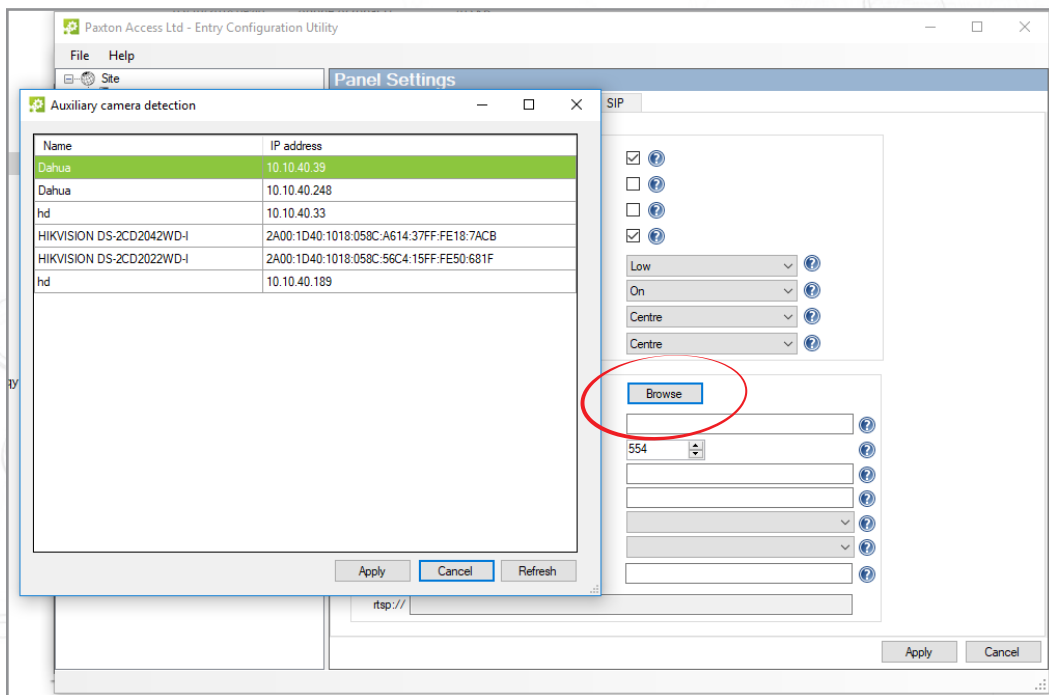
1. Login to the Entry Configuration Utility
2. Select the panel you wish to set the IP camera for
3. Select the 'Network' tab
4. Click on 'Enable IPv4'
5. Either select DHCP or enter the relevant IP address information if applicable



6. Select the 'Video' tab
7. Click on 'Enable Auxiliary Camera'



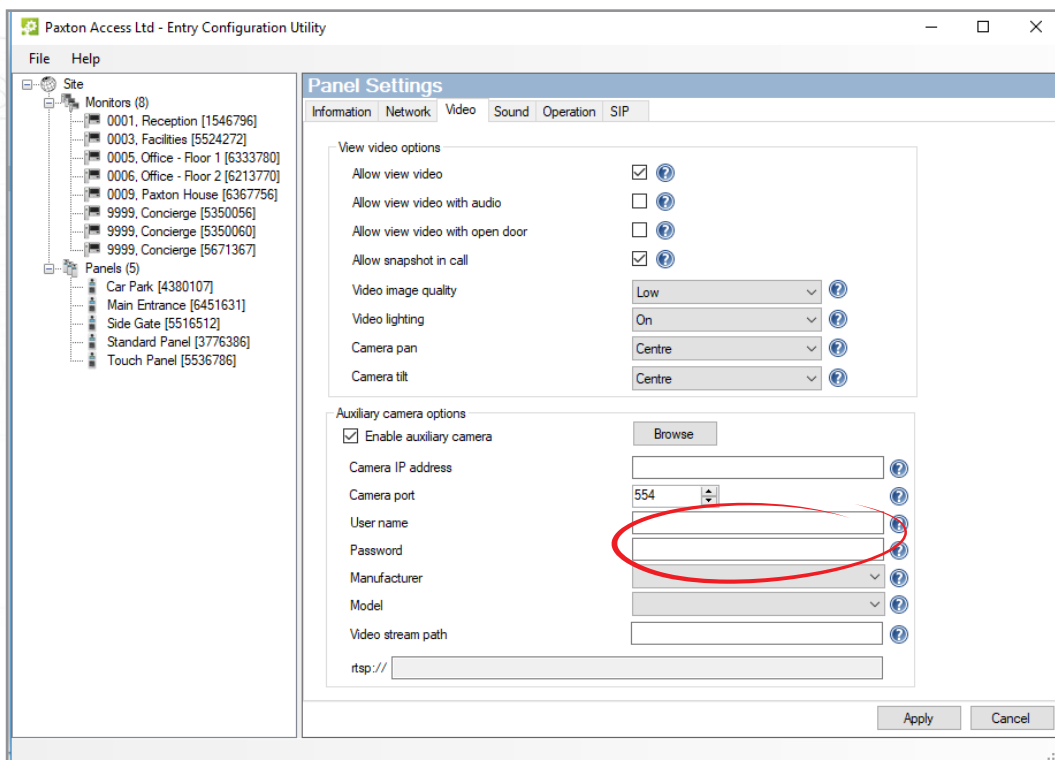
8. Click on the Browse button to view the ONVIF compliant cameras detected on the network



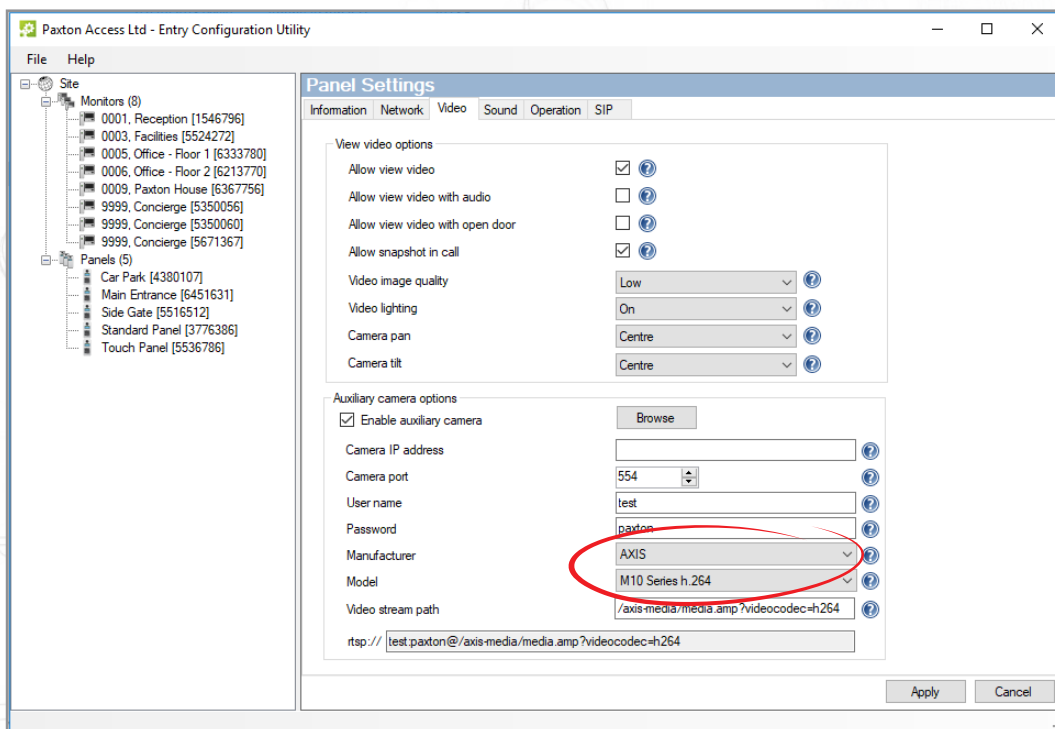
9. Select the appropriate camera and click Apply

10. Enter the username and password for the selected IP camera.

Note: A blank password will not be accepted.



11. Select the manufacturer and model of the camera you are connecting to
12. The Video Stream path will be populated with the appropriate RTSP URL. Check this information is correct and amend if necessary.



## How to view the secondary IP camera via the Entry Monitor

---

- The video feed can be viewed either during a call or when using the view video mode
- Simply touch the video in either of these modes to switch to the secondary video source
- This is indicated by a camera icon with either a number 1 or 2 next to it in the top left of the screen

**Note:** The default camera cannot be changed to the secondary camera and the audio feed must come from the entry panel.

## Setting the Video Stream Quality

---

To ensure optimal operation a dedicated video stream with the following parameters is required:

Maximum resolution: 768 x 768  
Maximum frame rate: 8 fps  
Maximum bit rate: 1 Mbps