

Configuring a Entry Audio Monitor

Overview

The Entry Audio monitor is an audio monitor used to remotely communicate with visitors, and is installed as part of a Entry system. It is powered using Power over Ethernet (PoE) and communicates with the other elements of the system using IPv6, providing 'plug and play' installation.

The only configuration required is the allocation of a monitor ID which the system uses to identify the correct monitor.

Entry configuration utility v2.19 or later is required when configuring an Audio Monitor. If used in conjunction with Net2 Access control software, this must be version 6.00 or later.

If used in conjunction with Paxton10 software, this must be version 2.9 or higher



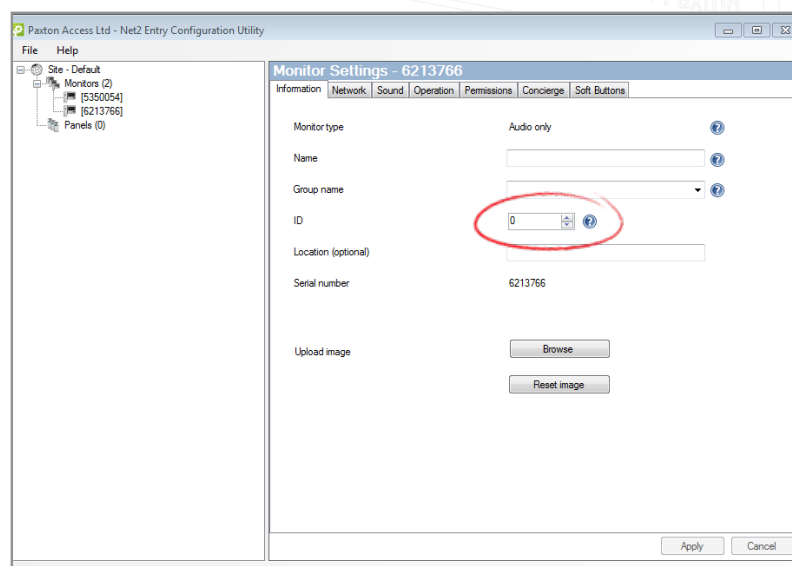
Configuration – Setting the monitor ID

Configuration of the monitor is completed via the Entry configuration utility. www.paxton.info/1907

The monitor ID is the number that a visitor will call to request entry (unless they are using a text only list) so it should relate to the location of the monitor where possible e.g. Flat Number.

Open the Entry configuration utility > login to the site > select the Entry Audio monitor. Then enter a monitor ID number and click **Apply**.

Monitors sharing the same ID will all ring when a call is made to that ID, and some configuration (name, concierge, divert mode) will be common on all monitors.



Configuration – Privileges

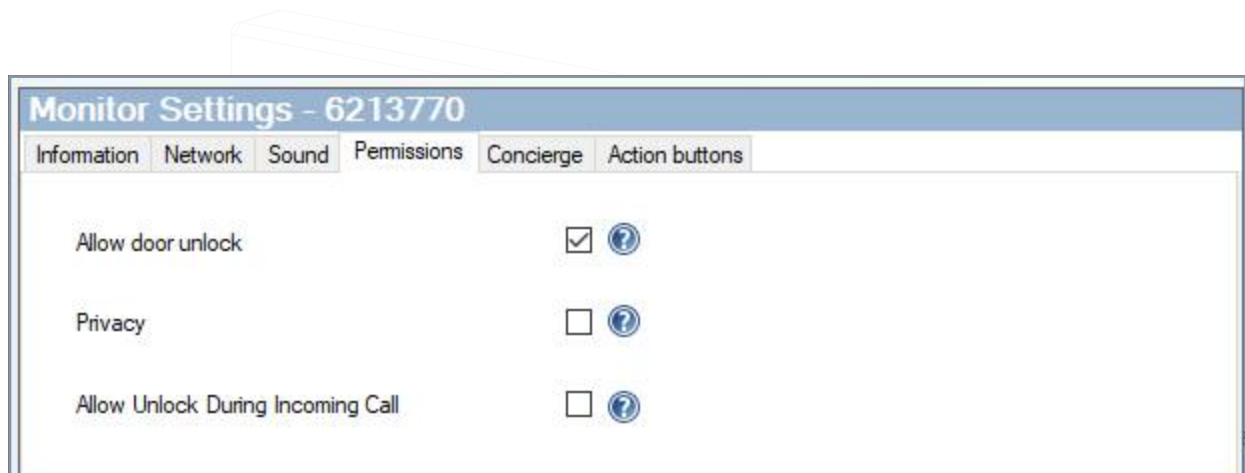
Privileges determine which controls and functionality will be available to the user of the monitor.

Allow door unlock: When enabled, this monitor can unlock the door during a call to a panel

Allow unlock during incoming call: When enabled, this monitor can unlock the door while the device is ringing

Privacy: When enabled, hands free and call back are disabled.

The above settings are found under the '**Permissions**' tab in the configuration utility



Personalisation

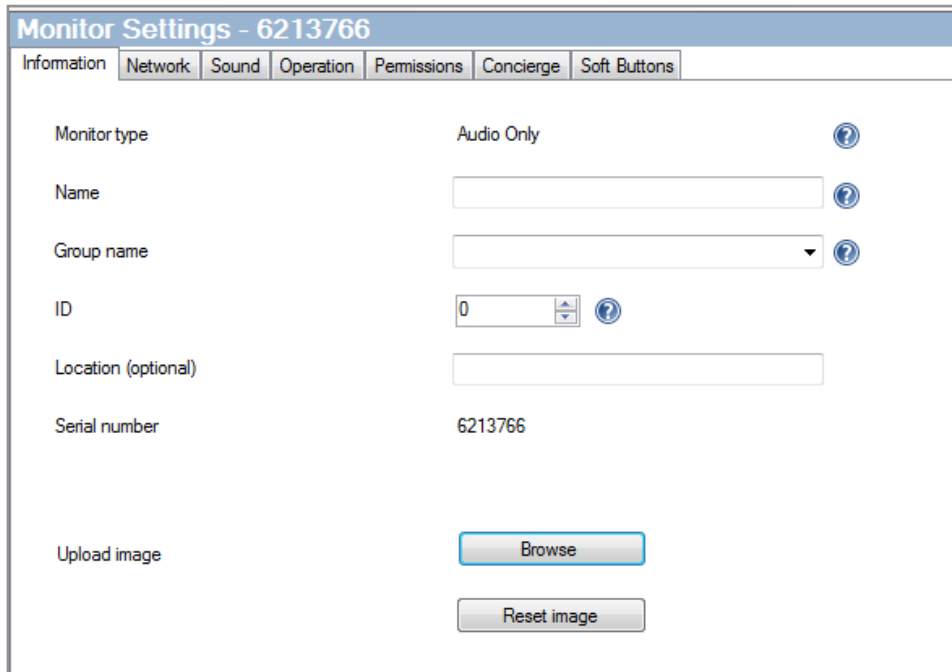
Name and image

A name and image may be used to identify the monitor at the entry panel.

Open the Entry configuration utility > login to the site > select the Entry Audio monitor. Under the '**Information**' section, enter a name into the '**Name**' field.

To upload an image to the Audio monitor, go to the '**Information**' tab, then under '**Upload image**' select '**Browse**'.

Image formats accepted include: *.png & *.jpg.



Monitor Settings - 6213766

Information | Network | Sound | Operation | Permissions | Concierge | Soft Buttons

Monitor type: Audio Only

Name:

Group name:

ID: 0

Location (optional):

Serial number: 6213766

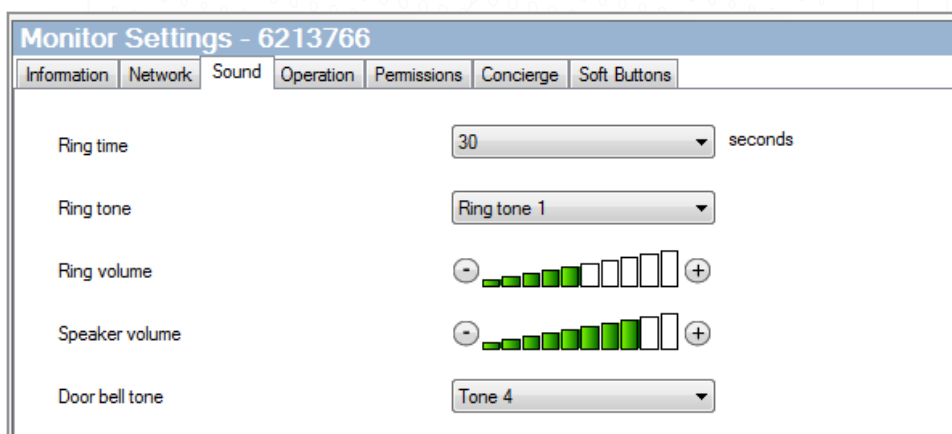
Upload image:

Ringtone and doorbell

A selection of ringtones and doorbells are available to choose from.

- The ringtone is played when the monitor is being called from a panel or concierge.
- The doorbell is played when someone presses the doorbell directly at your apartment or office (requires a doorbell to be wired to the doorbell contacts on the monitor).

To change the ringtone or doorbell tone open the Entry configuration utility, go to the **'Sound'** tab. From here you can change the ring time, ring tone, ring volume, speaker volume, select different ringtones and doorbell tones.



Monitor Settings - 6213766

Information | Network | Sound | Operation | Permissions | Concierge | Soft Buttons

Ring time: 30 seconds

Ring tone: Ring tone 1

Ring volume:

Speaker volume:

Door bell tone: Tone 4

Relay Output

The Entry Audio monitor features a dry contact relay output which can be used to connect a beacon or sounder to the monitor. The relay will trigger when the monitor receives a call, or when the doorbell rings. This makes it easy for a user to notice incoming calls in noisy environments.

The relay output does not provide power and supports 12V 2A. The sounder or beacon will require a separate power supply.

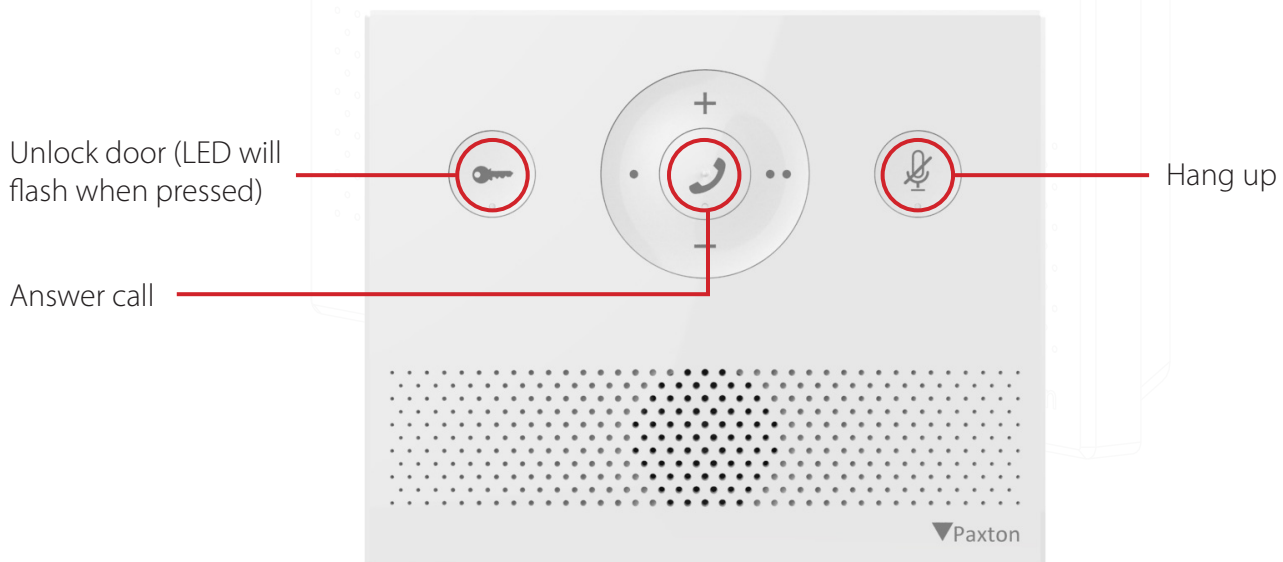
Operation

Many of the buttons on the monitor have dual functionality, depending on the status of the device. This section outlines all the different functions available for each status.

Answering a call

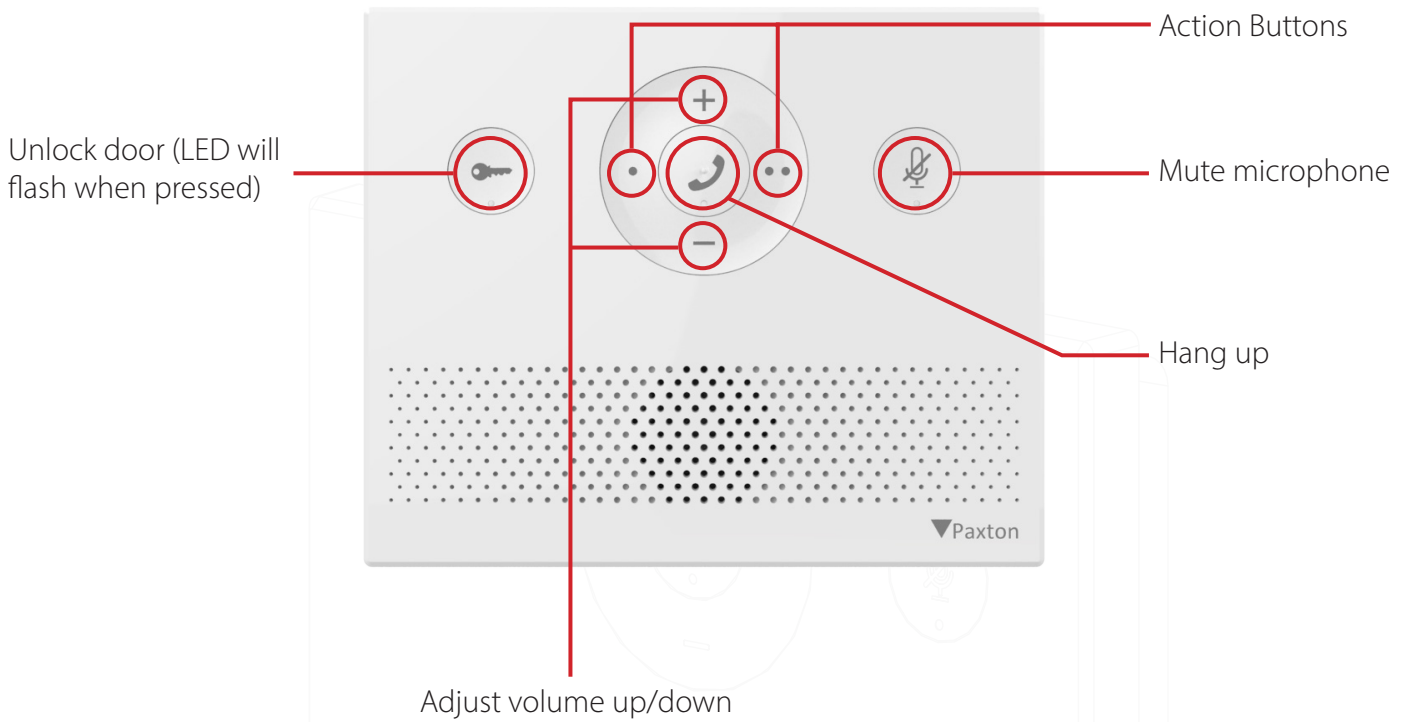
When a visitor or concierge calls, the monitor will sound its ringtone and 2 LEDs will light up (green LED and flashing amber LED).

Note: The unlock button will only unlock the door if enabled in the monitor privileges.



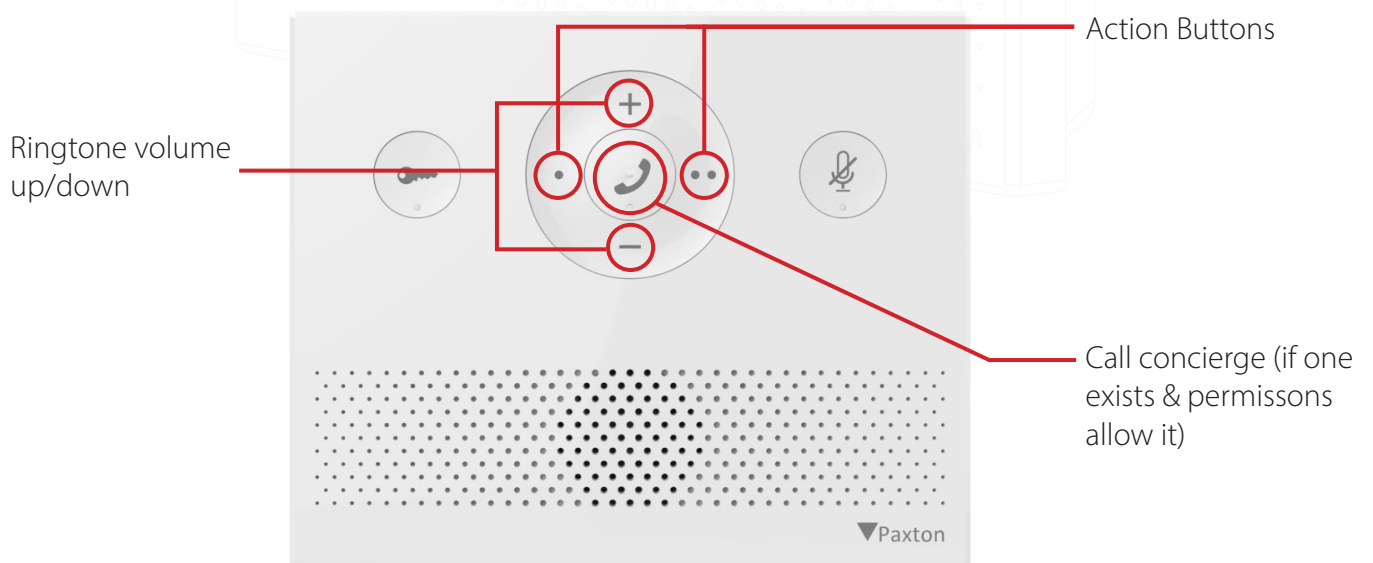
During a call

While in a call the amber LED will remain on throughout the duration of the call.



When not in use

When not in use all the LEDs will remain off unless in do not disturb mode (outlined below).



Do not disturb mode

Visitors can be stopped from calling the monitor by putting it into 'Do not disturb' mode. While in this mode, the monitor will not respond to incoming calls or messages.

To enter or exit 'do not disturb mode' press the mute button, when in 'do not disturb' mode the red LED will remain on until 'do not disturb' mode is turned off



Operation – Concierge

To set a monitor as concierge, see [AN1165](#).

When a monitor exists on a system, the monitor is able to call the concierge, or divert their incoming calls to the concierge on no answer.

To call the concierge press the call button in the centre of the monitor.

Note: To call the concierge from a monitor the 'Allow calls to concierge' setting must be ticked in the Entry configuration utility.

To divert incoming calls to the concierge on no answer go into the Entry configuration utility, select the monitor, then tick the 'Divert calls to concierge on no answer' box and **'Apply'**.

Monitor Settings - 6214954						
Information	Network	Sound	Operation	Permissions	Concierge	Soft Buttons
Allow calls to concierge	<input checked="" type="checkbox"/>					
Divert calls to concierge on no answer	<input type="checkbox"/>					

Monitor LEDs

The LEDs are used to represent various monitor and door states

Red: Monitor in do not disturb mode

Amber: In call

Green flashing: Door unlocked

Green & amber flashing: Incoming call from panel

Amber flashing: Incoming call from concierge / Calling concierge

