



Paxton

Specifying for Healthcare Facilities





Case Study

Why Access Control?

Paxton specialise in access control solutions. Electronic access control provides the most efficient and convenient way of securing a healthcare site.

Installing an access control system means that you will never have to change a lock again. Tokens are issued to allow access through the controlled doors, and are easily barred from the system if they are lost,

stolen or not returned by someone who leaves the organisation. Barred tokens will not allow access through the controlled doors.

Access control offers a secure, convenient, flexible and cost effective way of controlling who has access to your building and when that access is allowed. Access control gives organisations the security they need.



Conquest Hospital

Net2 Provides Multi-site Solution to Improve Security System

Type of site:

District General Hospital

Location:

Hastings and Eastbourne, UK

Number of users/doors:

- 6,500 users
- 83 doors

Solution required:

- Limit public access to certain areas
- Multi-site solution with single administration point
- Different levels of access to certain areas of the hospital

Result:

- Cost effective solution
- Consistent access control across all sites
- Lockdown in case of emergency
- Restricted, reported access to sensitive areas such as the blood bank

Paxton products used:

- Net2 plus
- Net2 Pro software



“Despite the huge number of staff, Net2 is still simple because the software is very intuitive. It is so easy to set up individual groups and different access levels for each group.”

Steve Edwards, Team Leader
Conquest Hospital Security

Access Control for Healthcare Facilities - A Net2 System

Healthcare facilities have numerous assets that need to be protected from misuse, theft or damage. It is also important to ensure staff, patients and visitors are kept safe. Electronic access control provides an efficient and convenient way of offering secure, flexible and cost effective building access management.

Access control allows people to move freely around a building, whilst also allowing specific areas to be managed with higher security, for example, an operating theatre or pharmacy.

In place of keys, electronic tokens are issued to allow access through the controlled areas and doors. They are easily barred from the system if they are lost, stolen, or simply not returned.

All doors controlled by the access control system can be set to automatically lock when the door is closed. Anyone without a PIN or access token is unable to enter. Doors can be set to unlock during designated time frames. It is also possible to secure the building at the touch of a button with emergency lockdown.

Managing Your Building

Net2 – a user-friendly and flexible networked access control system. It allows users to manage systems all from one central platform, making administration simple and straightforward.

Net2 Entry – a smart, simple video door entry system. Includes inbuilt access control; perfect to use as part of a Net2 access control system. Easy to install, it provides visual verification before granting access.

Long-range reader – with a read range of 5m it means at a car park barrier a token can be read without having to leave a vehicle. Disabled users may also gain access without presenting their token directly to the reader.

Reports – build customised reports about user events for individual doors or groups of doors at any time, for example the pharmacy doors. They can be saved and/or emailed. There are a number of pre-configured reports for quickly accessing standard data.

Automated Security Settings

Auto expiration dates – indicate the dates between which the user is valid. Visitors access rights for example can be configured so that their card automatically expires after one day. Access for contractors or temporary staff can be configured to be valid between certain dates and times.

Anti-passback – prevent unauthorised users from sharing tokens by setting restrictions within the software. This prevents the same token being used more than once to gain access.

Door/Building grouping – split the site into specific public and private areas, to make adding users with access permissions easier than programming individual doors.

Central administration – with Net2, you can manage the system from your desk via a PC making the security management of any building incredibly simple.

Roll call – set your system to generate an automatic roll call report when the fire alarm goes off. This helps to identify exactly who is safe once the building has been evacuated.

Setting Access Rights

Landlord tenant – restrict operators to only administer users within a specific user department and also apply specific access level permissions.

Temporary access – use the Net2 software to provide visitors with a token that has a date or time restriction.

ID card design – an access control system used with a card design package means your cards can double up as ID cards.

Emergency lockdown – secure the site by quickly disabling valid user access through selected doors at the touch of a button; disable exit buttons and relock doors held open by time zones. Specific security personnel can be permitted to pass through these doors during lockdown.

Multi-factor authentication – more than one method of authentication is required, from independent categories of credentials, to verify the user's identity to gain entry or exit.

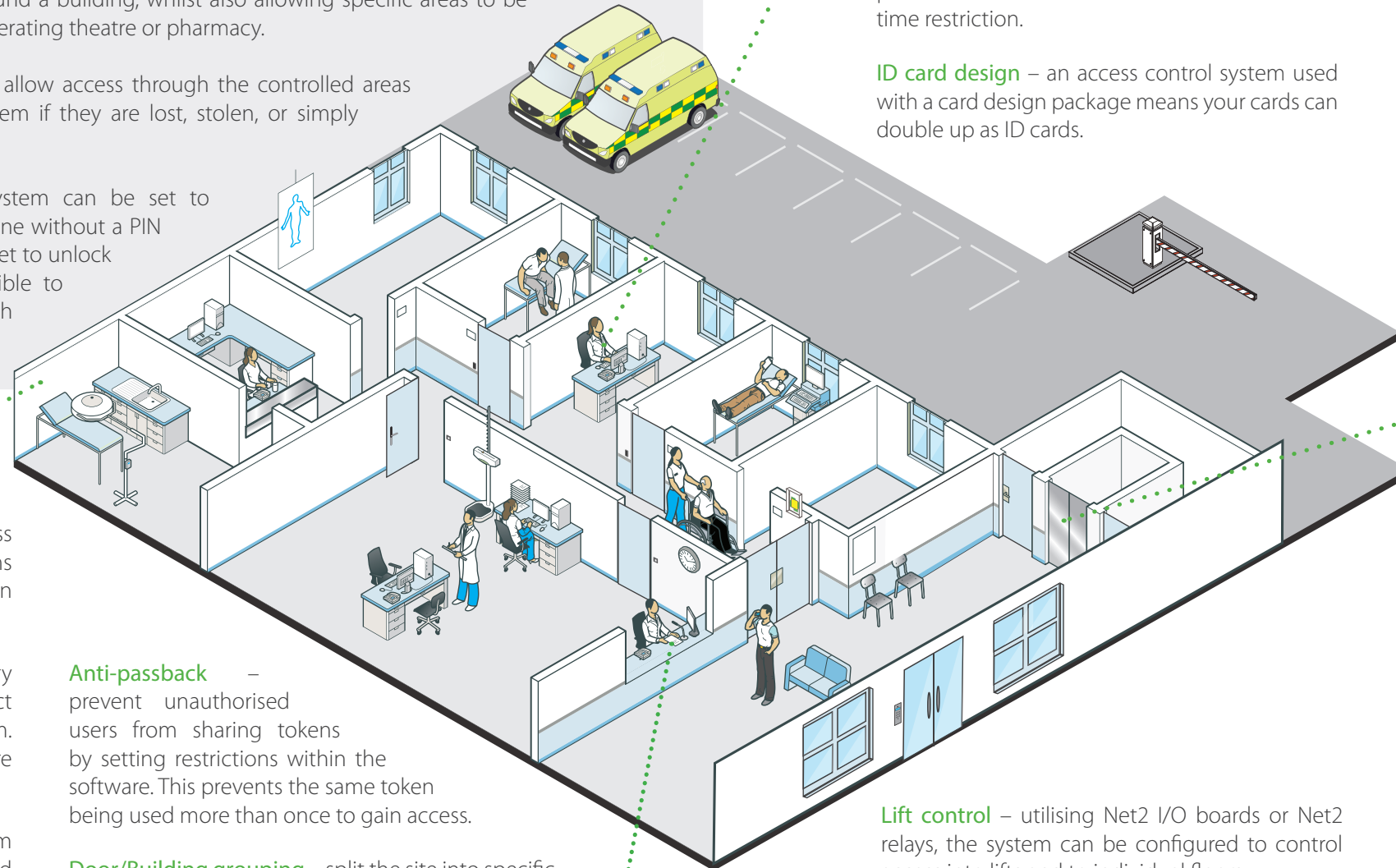
Integrating the System

Third party integration – Net2 seamlessly integrates with CCTV systems, biometrics, visitor management and intruder and fire alarms. The Net2 software allows users to manage these systems all from one central platform, making administration simple and straightforward.

- **CCTV integration** – Net2 integrates with many industry leading manufacturers' solutions, making it possible to review CCTV footage from within the Net2 system, as well as connecting to individual IP cameras in order to view a live feed at the door.
- **Biometric authentication** – a system that relies on the unique biological characteristics of individuals to verify identity for secure access to electronic systems, e.g. fingerprint verification.

Lift control – utilising Net2 I/O boards or Net2 relays, the system can be configured to control access into lifts and to individual floors.

LAN and WAN networked – these networks allow for interconnectivity between computers. Paxton's Net2 system is administered from the PC making central administration easy.



About Paxton

At Paxton, we design and manufacture market leading IP access control, door entry and building intelligence systems for smart buildings.

With over 30 years of experience, we put our core values of simplicity, quality and honesty at the heart of everything we do. Our products harness the latest technology to provide solutions that are easy to specify, install and use. We provide world class technical support and free training to ensure we consistently exceed our customers' expectations, supporting them and their businesses.

We develop systems for a wide range of sectors including education, healthcare, retail, leisure, commercial, public sector and provide solutions

suitable for a wide range of sites and requirements. At present, around 25,000 buildings are secured by Paxton globally, each year.

Based in Brighton, East Sussex, Paxton manufacture locally and export to over 60 countries worldwide. Our team is constantly expanding internationally and we currently have 300 employees located at 12 locations across the globe with offices in the UK, USA, France, Germany, South Africa, UAE and Benelux.

Paxton projects include Manchester United, graze, Michelin, Cherbourg Airport, Boucheries Nivernaises, Ostermalm Food Hall, Kingsway Park High School and Foyles.

FREE Consultant & Specifier Resource

We provide all the necessary help in the preparation of tender specification documents in the form of a Consultant and Specifier Resource. This includes:

- Compliance information
- Data sheets & drilling templates
- Technical product guides

Get in touch

Phone: 01273 811011

Email: specifier@paxton.co.uk

For further information, visit www.paxtonspecifier.co.uk

