

Net2 Integration with Uhlmann & Zacher - Clex Cylinder Lock

Overview



Uhlmann & Zacher have a cylinder lock with proximity built in that is able to integrate with Paxton Net2 controllers. The cylinder lock is a battery powered device with either a single or double sided integrated reader. The readers come in two variants; Mifare and EM 125kHz. A wireless module connects to the reader port via a Wiegand connection and also connects to the relay of the controller to actuate the relay function when a token is presented.

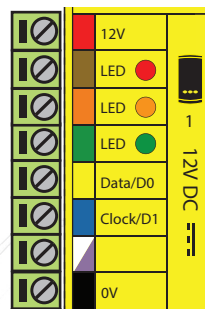
Both devices are required in order for the reader to operate correctly. A Wiegand rule is required in the configuration utility and the reader set to Wiegand custom in the door settings. More information on this is covered in the Paxton datasheet. Units can be ordered direct from the manufacturer and can receive a discount of 20% if Paxton is mentioned on the order. For details please email: hartmut.beckmann@uundz.de

Tokens:

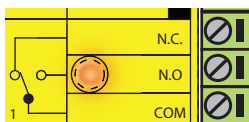
If a mix of Paxton readers and U&Z cylinders are installed on a site using Paxton tokens, the token number read by the cylinder is different to the token number read by the Paxton readers and the Net2 Desktop reader. This means tokens will need to be enrolled twice. Once using the Net2 Desktop reader and again using the cylinder lock as a desktop reader. This will ensure that both token numbers are stored in the user record within Net2. Alternatively, Paxton EM-tokens (250-110 - keyfobs with grey ring or 250-120 cards) can be used as the same number is read by both readers

2. Connecting Hardware:

FSM Module	ACU terminal
VCC	+12V
-	Red LED
-	Amber LED
-	Green LED
Data 0	Wiegand D0
Data1	Wiegand D1
-	NOT USED
GND	0V



Ensure any unused wires are safely terminated.



ACU terminal	FSM Module
N.C.	-
N.O.	IN
COM	VCC

Ensure any unused wires are safely terminated.



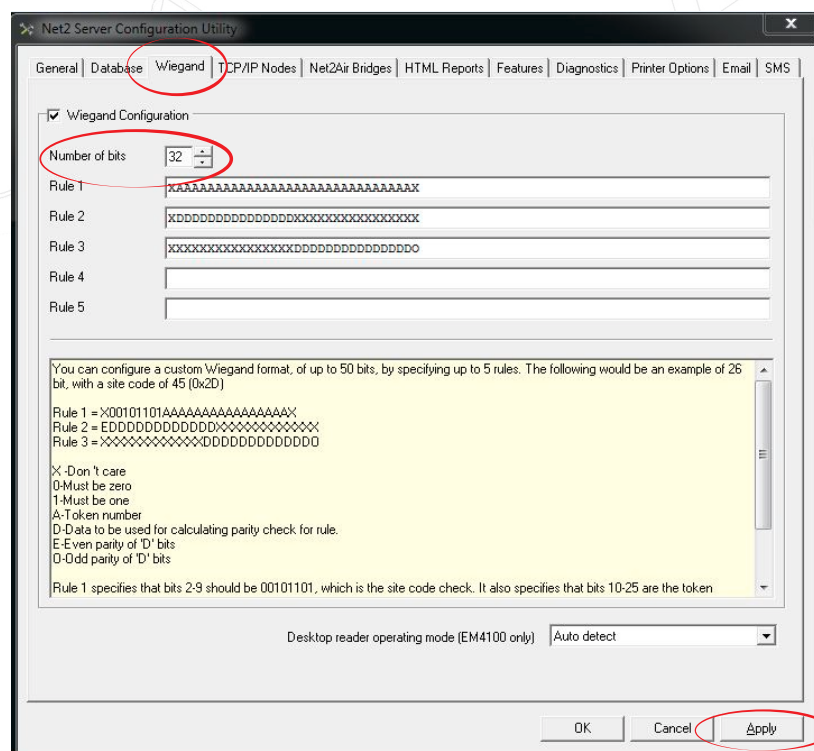
Taught Servicekeys

1. Present the Servicekey to the Cylinder Lock -> beep 1x low, 1x high and green LED flash.
2. Present Change Battery Card to the Cylinder Lock -> beep 2x short.
3. Present Dismantling Card to the Cylinder Lock -> beep 2x short.
4. (Optional) Taught Emergency Card. (emergency opening from the door, in case of lost wireless connection)
5. (Optional) For exit this procedure, present the Servicekey.

1. Unscrew the wireless module case.
2. Hold the red button on the wireless module for 8 seconds, after release a red LED will flash.
3. Present the Servicekey to the Cylinder Lock -> Beep 1x low, 1x high and green LED will flash.
4. Press red button again for closing the servicemode, Cylinderlock will beep 1x.

1: Open Net2 Configuration Utility and go to tab - Wiegand's.

- 1.1. Place a checkmark to the left of Wiegand configuration
- 1.2. Change Number of Bits to 32



- 1.3. For Rule 1 type in following row of computer keys: XAAAAAAAAAAAAAAAAAAAAAAAAAAAAAX
- 1.4. For Rule 2 type in following row of computer keys: EDDDDDDDDDDDDDDDDDDXXXXXXXXXXXXXXXXXX
- 1.5. For Rule 3 type in following row of computer keys: XXXXXXXXXXXXXXXXXXXDDDDDDDDDDDDDDDDDD
- 1.6. Click on 'Apply' and 'OK' to end the configuration.

2. Open Net2 Access Control Software and go to Doors tab:

- 2.1: Choose and double click a door to open the door configuration page.
- 2.2. Choose Wiegand reader as Reader type.
- 2.3. For the token data format choose Wiegand custom.

ACU serial number: 02246252

Door name: Test Net2 Plus

Door group: (none)

Door open time: 4 seconds

Unlock the door during: At no time

☐ Only unlock the door once a user has been granted access ☒ Silent operation

Unlock relay 2 during: At no time

Reader 1 | Reader 2 | Alarm | Events | Fire alarm inputs | Intruder Alarm | Access rights

Reader details


Name: Test Net2 Plus (In)

Reader type: Wiegand reader

Keypad type: None


Token data format: Wiegand custom

Operating mode

Reader operating mode:  Token only

☐ Timed operating modes - This allows for different reader operation during a selected timezone.

During this timezone: All day, every day

This reader will operate as:  Inactive

Reader action - This is what will happen when a valid access is granted.

Relay 1 opens for door open time

- 2.4. Reader operating mode is Token only.
- 2.5. Click on Apply to save this configuration.

3. Function test:

1. Present a keyfob to the Cylinder Lock.
2. Please Check to see if the red LED from the wireless module will flash a short time.
3. Net2 ACU should beep now.
4. In case of granted access the Cylinder Lock should engage the clutch.



☎ +44 (0) 1273 811011
✉ support@paxton.co.uk
💬 paxton.support



☎ +49 (0) 251 2080 6900
✉ support@paxton-gmbh.de
💬 paxton.gmbh.support



☎ +33 (0)157 329356
✉ support@paxtonaccess.fr
💬 paxton.support



☎ +32 (0)78485147
✉ support@paxton-benelux.com
💬 paxton.benelux.support



☎ +31 (0)76 3333 999
✉ support@paxton-benelux.com
💬 paxton.benelux.support



☎ +27 (0)21 4276691
✉ support@paxtonaccess.co.za
💬 paxton.support



☎ +1(800) 672-7298
✉ supportUS@paxton-access.com
💬 usapaxton.support



☎ +11 5715088198
✉ soporte@paxton-access.com
💬 paxton.soporte



☎ +1 (864) 751-3501
✉ soporte@paxton-access.com
💬 paxton.soporte



☎ 8000 3570 3783
✉ support@paxtonaccess.ae
💬 paxton.support



☎ +44 (0)1273 811011
✉ support@paxton.co.uk
💬 paxton.support