

## Technical Support



1.800.672.PAXT


[support@paxton-access.com](mailto:support@paxton-access.com)

Technical help is available: Monday - Friday from 02:00 AM - 8:00 PM (EST)  
Saturday from 04:00 AM - 08:00 AM (EST)

Documentation on all Paxton products can be found on our web site - <http://www.paxton-access.com/>

## Quickstart guide

This supplement is a brief guide to installing a TOUCHLOCK K series compact system. Further information is available for download at: <http://paxton.info/140> or call the technical support team on: **800.672.7298**

## Fitting



## FCC Compliance

### Class B digital devices.

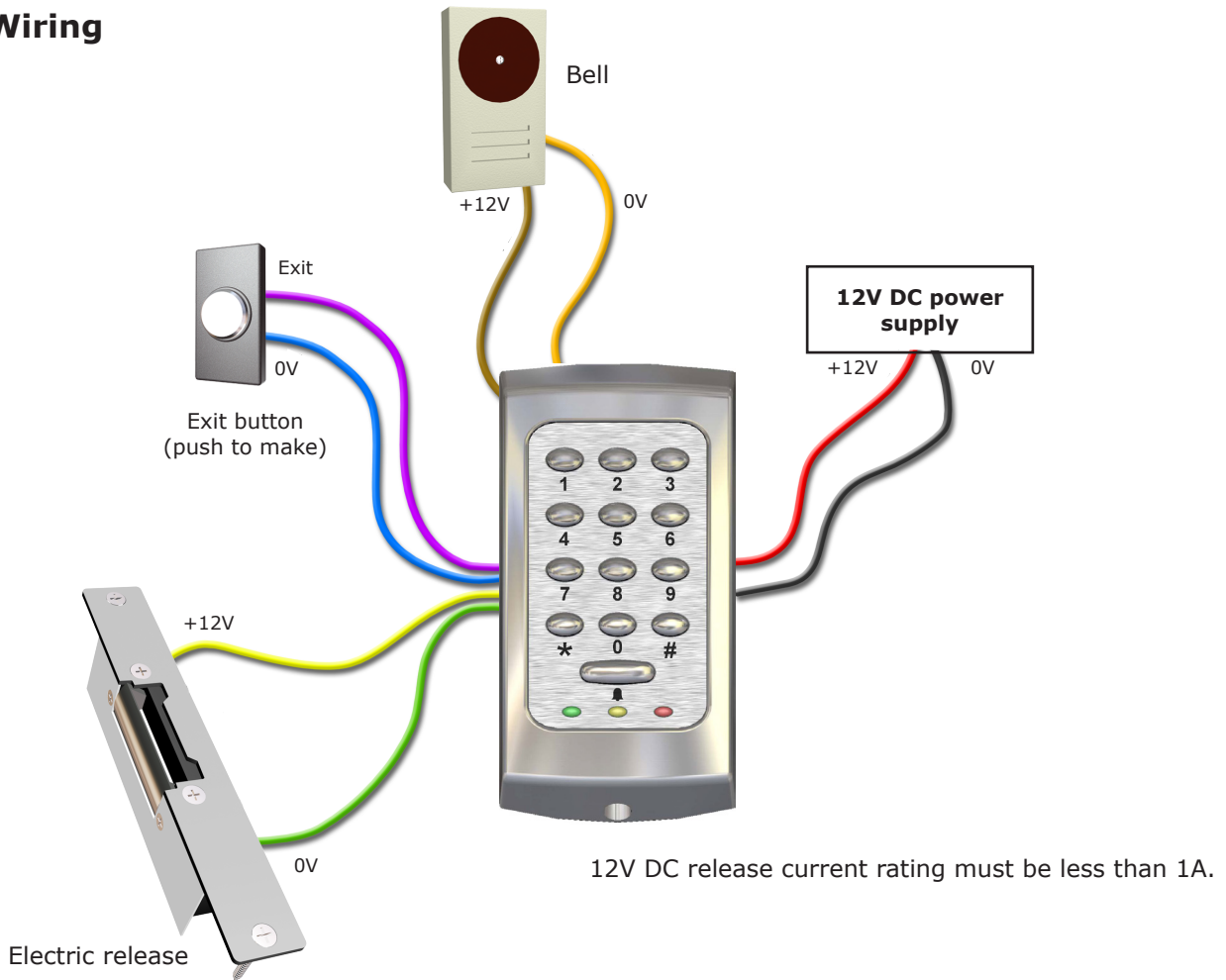
This equipment has been tested and found to comply with the limits for a Class B digital device, pursuant to Part 15 of the FCC Rules. These limits are designed to provide reasonable protection against harmful interference in a residential installation. This equipment generates, uses and can radiate radio frequency energy and, if not installed and used in accordance with the instructions, may cause harmful interference to radio communications. However, there is no guarantee that interference will not occur in a particular installation. If this equipment does cause harmful interference to radio or television reception, which can be determined by turning the equipment off and on, the user is encouraged to try to correct the interference by one or more of the following measures:

- Reorient or relocate the receiving antenna.
- Increase the separation between the equipment and receiver.
- Connect the equipment into an outlet on a circuit different from that to which the receiver is connected.
- Consult the dealer or an experienced radio/TV technician for help.

### Class A digital devices.

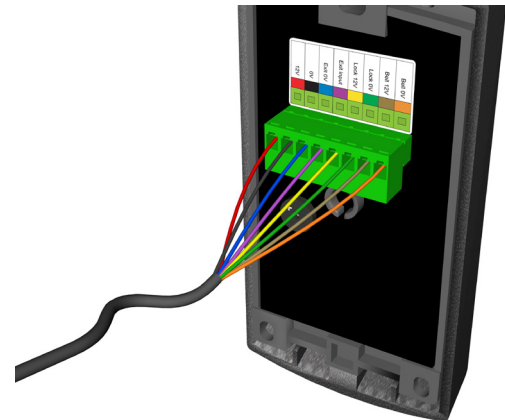
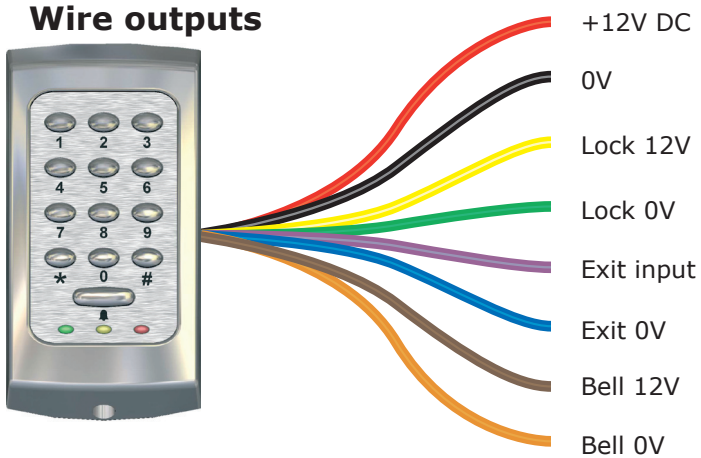
This equipment has been tested and found to comply with the limits for a Class A digital device, pursuant to part 15 of the FCC Rules. These limits are designed to provide reasonable protection against harmful interference when the equipment is operated in a commercial environment. This equipment generates, uses, and can radiate radio energy and, if not installed and used in accordance with the instruction manual, may cause harmful interference to radio communications. Operation of this equipment in a residential area is likely to cause harmful interference in which case the user will be required to correct the interference at his own expense.

## Wiring



## K75 Screw connector option

### Wire outputs



**If the +12V bell wire (Brown) is not connected it must be terminated to avoid a short circuit.**

The unit should be mounted in conjunction with an electrical backbox to achieve the required clearance for the connector.

If an adaptor plate (310-750-US) is fitted, the mountings on the backbox can also be used.

## Full System Reset

1. Power down the system.
2. Power the system up whilst pressing and holding 3.
3. The LED's will flash and the unit will beep 3 times a second.
4. Go to the programming guide. - Initialising a new system.

## Initialising a new system

Choose a 6 digit Programming Code and load this into the unit as follows:

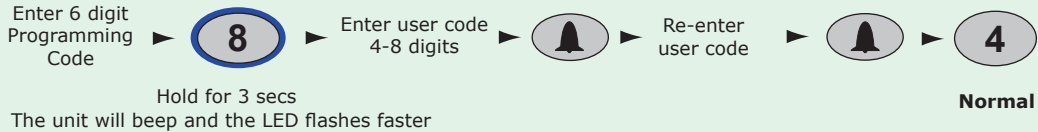
**IMPORTANT: Do not set the Programming Code to 123456**  
**The default user code is 1234 - the programming code must not include 1234 in the same order.**  
**The door lock will release after 1234 and ignore any remaining numbers.**



The factory User Code is now set to 1234

You can now set up the user codes and features using the programming chart.

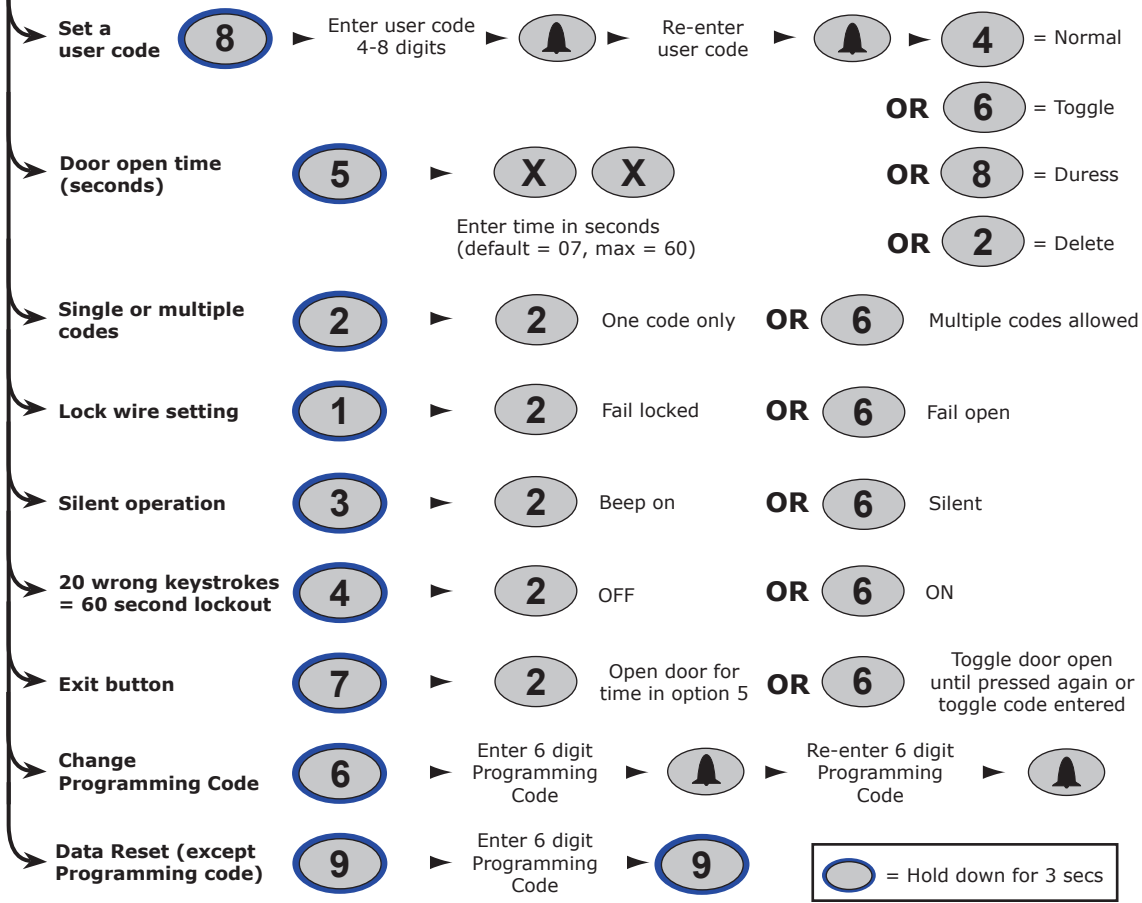
Example: - Setting a user code to unlock the door under Normal condition



This box can be used to write down the Programming Code for future reference.  
 Ensure that this information is stored in a secure place.

--	--	--	--	--	--

**START - Enter the 6 digit Programming Code and hold down a function key**  
 or 3 seconds. - The unit beeps and the LED flashes faster.  
 Continue the key sequence to set the option - The keypad returns to operating mode.



Here is the list of topics about this product that receive the most technical support inquiries. We list them here to help you speed up the installation and trouble shooting process.

### 1 - Can I use a fail open release (e.g. Maglock)?

The lock wires from a compact keypad provide 12V DC to the electric lock. By default, the compact is set to operate with a fail locked release - providing 12V on the lock wires when a valid entry is made. To use a fail open release, the lock wire setting needs to be changed (Program option 1)

### 2 - Can I put a relay across the lock wire output?

Yes - All compact systems have been designed to drive relays.

### 3 - Integration with an entry phone system.

The output from the entry phone system is used to simulate an exit button for the Paxton equipment. No voltage should be applied to the exit input wires (Blue / Mauve) of a compact unit. Most phone systems will provide a powered pair to release the door lock; this voltage must be used to drive an independent relay. The relay contacts must be 'normally open going closed' to mimic a 'push to make' exit button. Only a voltage free output pair can be connected directly to the exit input wires.

### 4 - What are the keypad code types used for?

Normal - Releases the door for the time period set in Option 5 ( 7 secs default)

Toggle - Releases the lock until the code is entered for a second time.

Duress - Releases the lock (as in Normal) but also energizes the bell output for 30 seconds.

Delete - Used to remove a specific code that has already been entered in Multiple mode.

### 5 - Connecting a compact with another control unit.

This cannot be done. Paxton Compact systems have the control electronics built in and no direct data output is provided.

The Switch2 and Net2 system use a different type of data input.

Note: The compact system will control the door unit on its own.

### 6- Read in and read out on one door.

You cannot wire two compact systems in parallel to a common lock as this may result in damage to your system. They will both power the door lock independently and will not offer single point control. We recommend using one Switch2 controller with two compatible keypads or readers.

Specifications			
Features	Min	Max	
Number of Codes	1	50	
Code length	4 digits	8 digits	
Door open time	1 sec	60 secs	
Silent operation			Yes
Can be used with fail OPEN locks			Yes
Can be used with fail CLOSED locks			Yes
Exit button input			Yes
Door Contact input			No
Backlight			No
Electrical	Min	Max	
Voltage	11V DC	14V DC	
Current		170 mA	
Switchable current		1 A	
Alarm/bell output voltage		12V DC	
Cable length			3 yards
Environment	Min	Max	
Operating temperature	-20 °C (-4 °F)	+55 °C (+131 °F)	
Waterproof	IPX7		Outdoor Use
Dimensions	Width	Height	Depth
K38	1 1/2 in	3 in	1/2 in
K50	2 in	4 in	5/8 in
K75	3 in	5 1/2 in	5/8 in