

# Paxton BLU 3G Modem Kit

## Overview

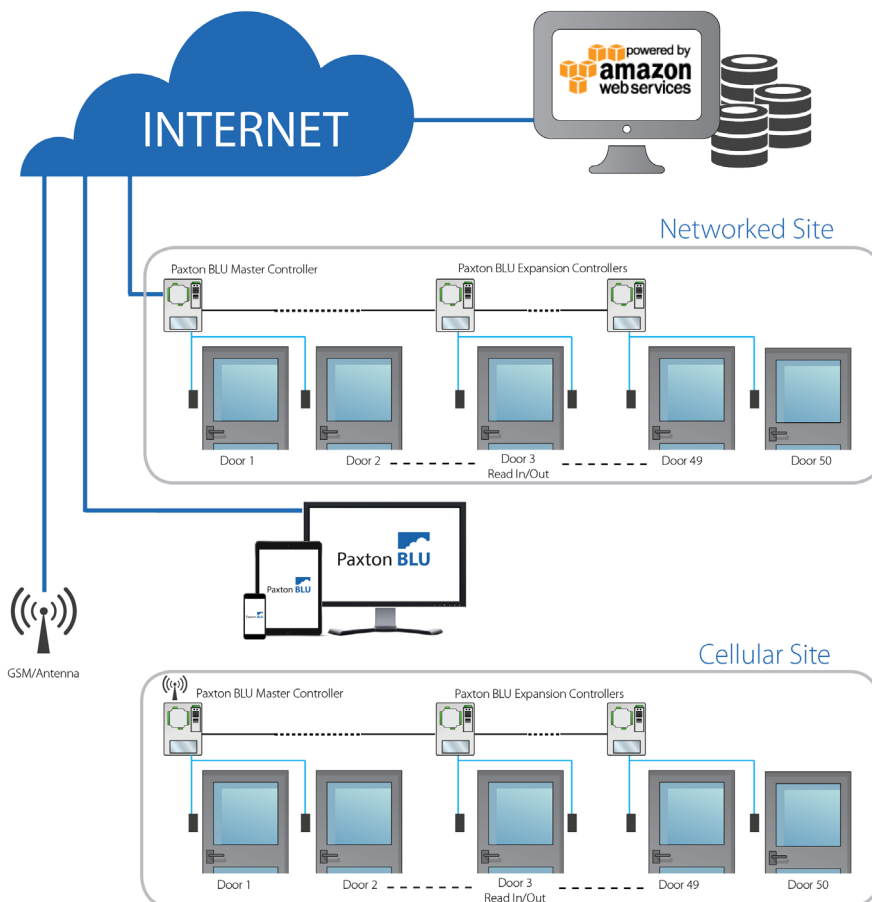
Paxton BLU Access Control is a highly scalable access control system, specifically designed for multi-site operation with connectivity over the LAN or cellular network. With over 100,000 users per controller and the capability to manage 10,000+ sites combined with the option of LAN or cellular connectivity, Paxton BLU can provide seamless integration of the most remote site applications.

Connectivity options of Ethernet and mobile data offer flexibility, access to remote sites and cost effective alternatives to installing ADSL or fiber. The control unit stores access information locally and will continue to function in the event of loss of connectivity to the server.



## Features

- Connects Paxton BLU Master Controller to cellular network
- No local server or network required
- Can be used as primary communications or as a backup to networked communications
- Flat rate cellular communication license\*





## System

Mobile Network	Any GSM/GPRS
SIM/Mobile contract	GSM/GPRS 5MB min data package, VPN (from Paxton)
Antenna	GSM/GPRS, SMA Female, T bar provided



## Electrical

Supply voltage range	8V - 30V (provided from Master controller)
----------------------	--



## Hardware

Dimensions (W x H x D)	4.5" x 3.4" x 1.0" (115 x 86 x 26 mm) including connectors
------------------------	--



## Environment

operating temperature	-22 °F to +149 °F (-30 °C to +65 °C)
-----------------------	--------------------------------------

Paxton BLU 3G Modem Kit 838-605-US

\*Activation license purchased directly from Paxton. Must be purchased prior to installation.