

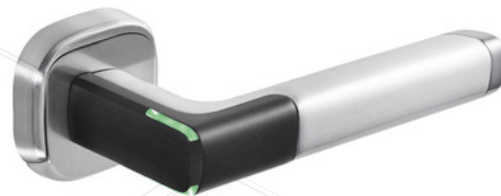
Connecting a Assa Abloy Aperio H100 to Net2

Overview

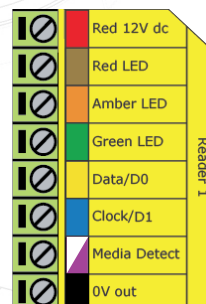
The Aperio H100 access control handle is used with the Aperio Wiegand Hub and connected to the Net2 Plus doorcontroller. The Aperio H100 is tested with Mifare Classic 32 bits cards using UID (card serial number).

The Aperio H100 Hub is connected to the Net2 Plus doorcontroller as shown in the wiring diagram.

The Aperio Wiegand hub needs to be powered separately with 24 VDC. It cannot be powered by the reader output of the Net2 Plus door controller.



Cable Pinout	ACU terminal
-	+12V
Red	Red LED
-	Amber LED
Green	Green LED
D0	Wiegand D0
D1	Wiegand D1
-	NOT USED
-	0V



Ensure any unused wires are safely terminated.

Because this is tested with Mifare Classic 32 bits cards there has to be set a custom Wiegand rule In the Net2 configuration Utility. Use 32 bits Wiegand and fill the first rule with XXXXXXXXXXXXXXXXXXXXXXXXXXXX AAAX. In the Net2 access control software you will have to use the "Wiegand custom" reader setting as token data format.

To configure the LED setting, open the Net2 server configuration utility and on the 'General' tab, check the 'Display reader LED's in OEM style' box.

It is not possible to use the Paxton desktop reader to enroll tokens, set the reader mode to desktop reader to enroll tokens.

For further information and current details please contact Assa Abloy.



+44 (0)1273 811011
support@paxton.co.uk
paxton.support



+49 (0) 251 2080 6900
support@paxton-gmbh.de
paxton.gmbh.support



+33 (0)157 329356
support@paxtonaccess.fr
paxton.support



+32 (0)78485147
support@paxton-benelux.com
paxton.benelux.support



+31 (0)76 3333 999
support@paxton-benelux.com
paxton.benelux.support



+27 (0)21 4276691
support@paxtonaccess.co.za
paxton.support



+1(800) 672-7298
supportUS@paxton-access.com
usapaxton.support



+11 5715088198
soporte@paxton-access.com
paxton.soporte



+1 (864) 751-3501
soporte@paxton-access.com
paxton.soporte



8000 3570 3783
support@paxtonaccess.ae
paxton.support



+44 (0)1273 811011
support@paxton.co.uk
paxton.support