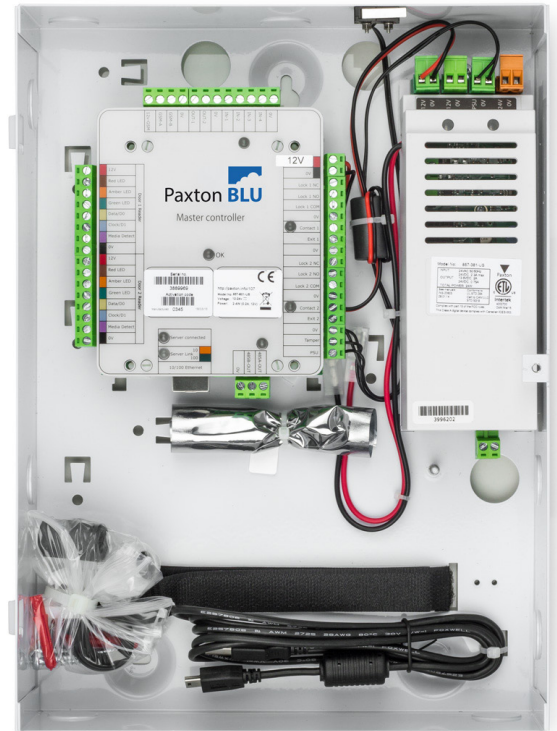


# Paxton BLU Master Controller

## Overview

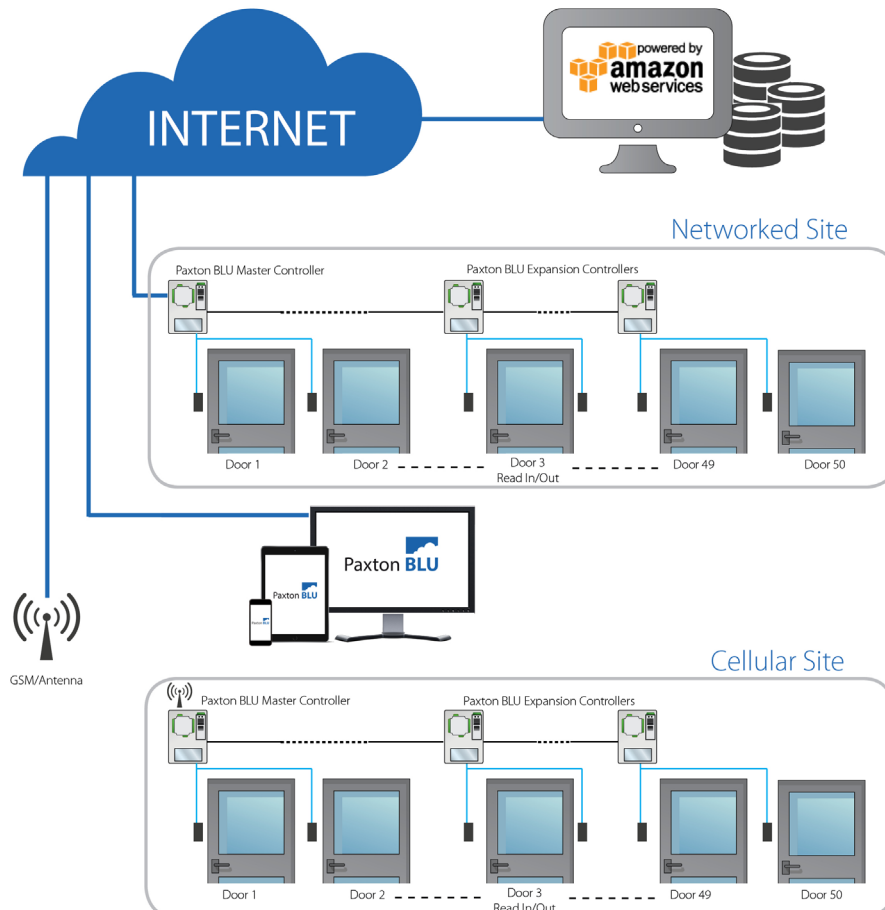
Paxton BLU Access Control is a highly scalable access control system, specifically designed for multi-site operation with connectivity over the LAN or cellular network. With over 100,000 users per controller and the capability to manage 10,000+ sites combined with the option of LAN or cellular connectivity, Paxton BLU can provide seamless integration of the most remote site applications.

Connectivity options of Ethernet and mobile data offer flexibility, access to remote sites and cost effective alternatives to installing ADSL or fiber. The control unit stores access information locally and will continue to function in the event of loss of connectivity to the server.



## Features

- Cellular/Ethernet
- 2 door/2 reader controller
- Expandable up to 50 doors per Master Controller with additional Expansion controllers
- 10,000+ managed sites
- 100,000+ users per controller
- 512 Time zones
- 1000 Access levels per controller
- Activity reports
- LED indications
- Web browser for desktop, tablet and phone
- Distributed database, 1000s of events per controller





## System

Web browser	IE, Firefox, Chrome, Safari
Sites/connections	10,000+ connecting to cloud
Doors	10,000+ with 2 door controllers
Users	100,000+ per controller
Alarm notification	On screen, email
Time zones	512 per controller
Holidays	16 per site
Access levels	1000 per customer
Activity reports	Weekly, monthly, daily - TBC
LED indications	Power, unlock, modem OK and diagnostics



## Electrical

Supply	12V/24V 2A AC/DC
Power consumption	200 mA
PSU	12V DC 2A with charger
Battery backup	12V 7AH (not included)
Cellular Network	Cellular networks as part of our approved partner networks
SIM/Mobile contract	Cellular data package (5MB/month), purchased from Paxton
Antenna	Cellular antenna provided, T-bar with SMA Female connector



## Communication

Communication options	Ethernet/Cellular
	Up to 50 doors per master controller
Ethernet	10/100 Mbps
RS485 dataline	3280.84 ft (1000m) max between controllers
Data lines per system	Unlimited



## Hardware

Dimensions (W x H x D)	9 1/8" x 12 5/8" x 3 1/8" (236mm x 320mm x 80mm)
Readers/Keypads	All Paxton clock and data and various Wiegand formats available

Input/Output	100 yds	2 conductor - Alpha 1172C (22AWG) or equivalent
Reader/Keypad	82 feet	8 core, shielded - Belden 5506FE (22AWG) or equivalent
Reader/Keypad	328 feet	8 core, shielded - Belden 5306FE (18AWG) or equivalent

Door contact	Normally closed
Monitoring (sabotage)	Normally closed
PSU (fail, on battery)	Normally closed
Tamper (cabinet)	Normally closed
4 spare inputs (customer definable)	Auxiliary inputs for event on open or closed status
2x lock relays	24V DC 4A max
2x spare outputs (customer definable)	12V 0.5A max



## Environment

Operating temperature	32°F - 131°F (0°C - 55°C)
Paxton BLU Master controller, in enclosure	838-501-US
Paxton BLU Master controller, PCB only	838-601-US
Paxton BLU Master controller License - 1 Year	838-540-US