

# Integrating Net2 with cameras on NVR/DVR systems

## Overview

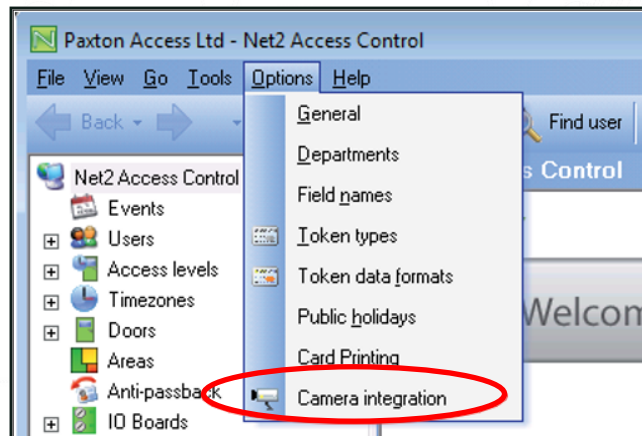
Net2 allows the integration of cameras which will provide digital images associated with Net2 events. This means that when security operators want to see what has caused an alarm or access event, they simply double-click on an event and view the video images.



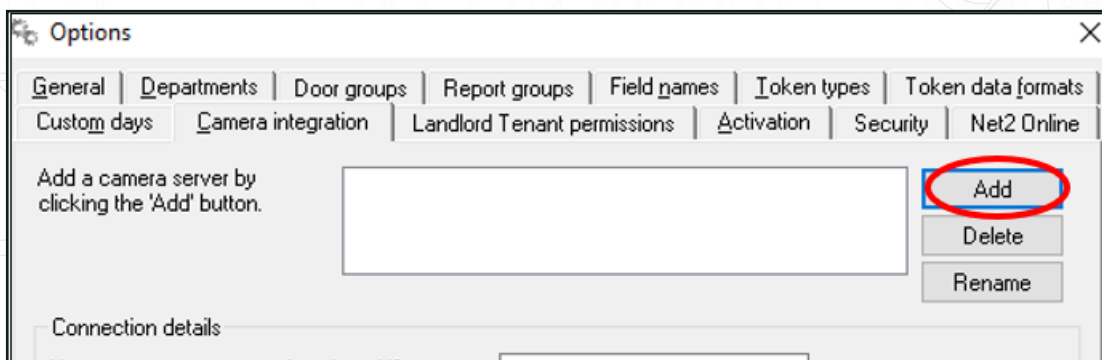
## Software configuration

The camera software must be installed, configured and running on the camera server before you can configure the option on Net2. While some Camera brands need additional software to integrate with Net2, many are already integrated into Net2 Access Control.

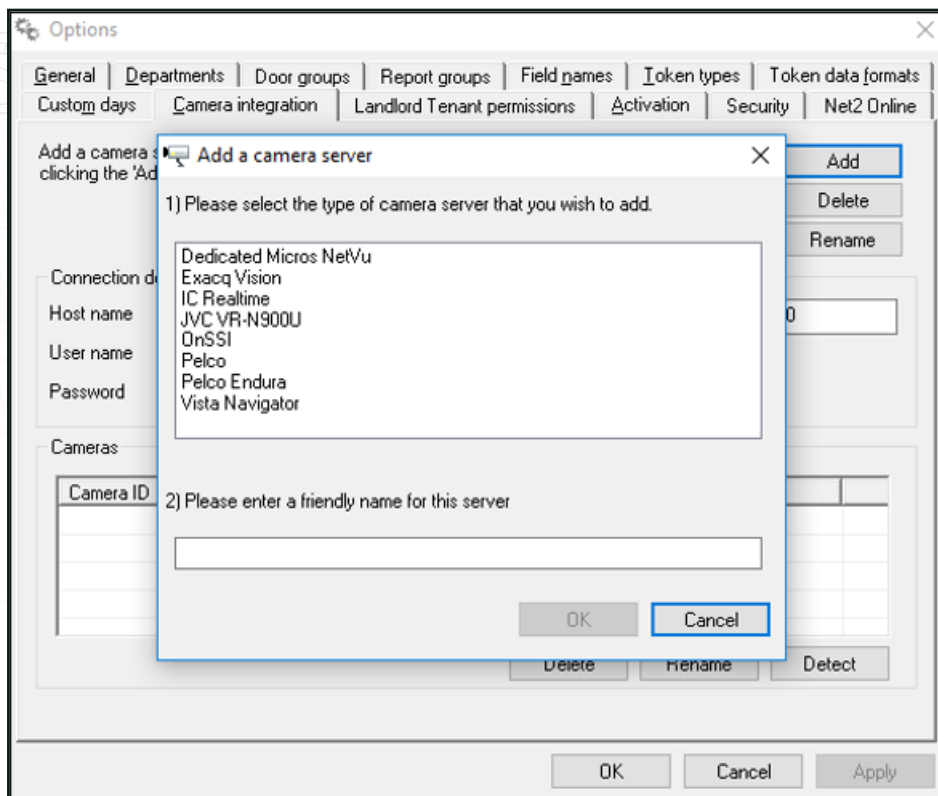
Once the camera software (if needed) is installed, go into the Options menu on Net2 and select Camera integration.



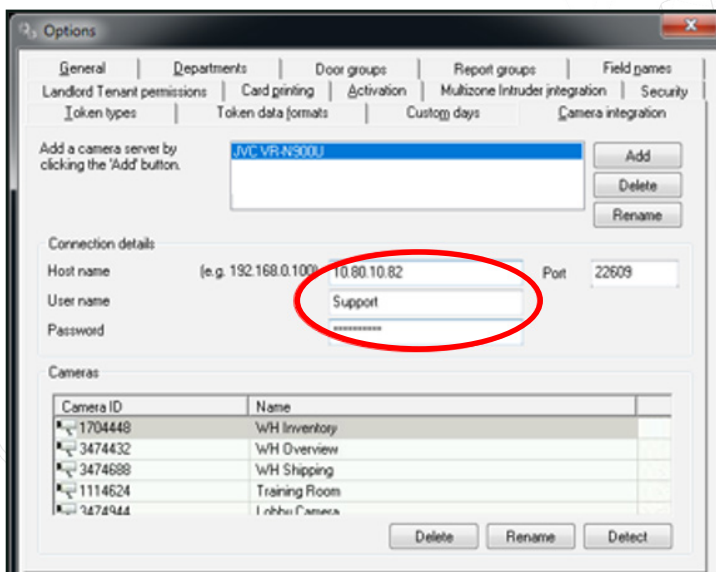
Click the Add button.



Now select the operator of choice from the list and enter a 'friendly' name for the server.



The server location and login credentials for the camera server should now be added. These settings only need to be configured on the Net2 server. All Clients (Workstations) will access this information through the server.



Enter the Host name. This will be the URL or IP Address of the DVR/NVR (digital video recorder/network video recorder) server, you can also include a port number if this is required.

Enter a username and password associated with a user account within the video management software.

Then click Detect.

Net2 will automatically add all the active cameras. The cameras can be renamed if required.

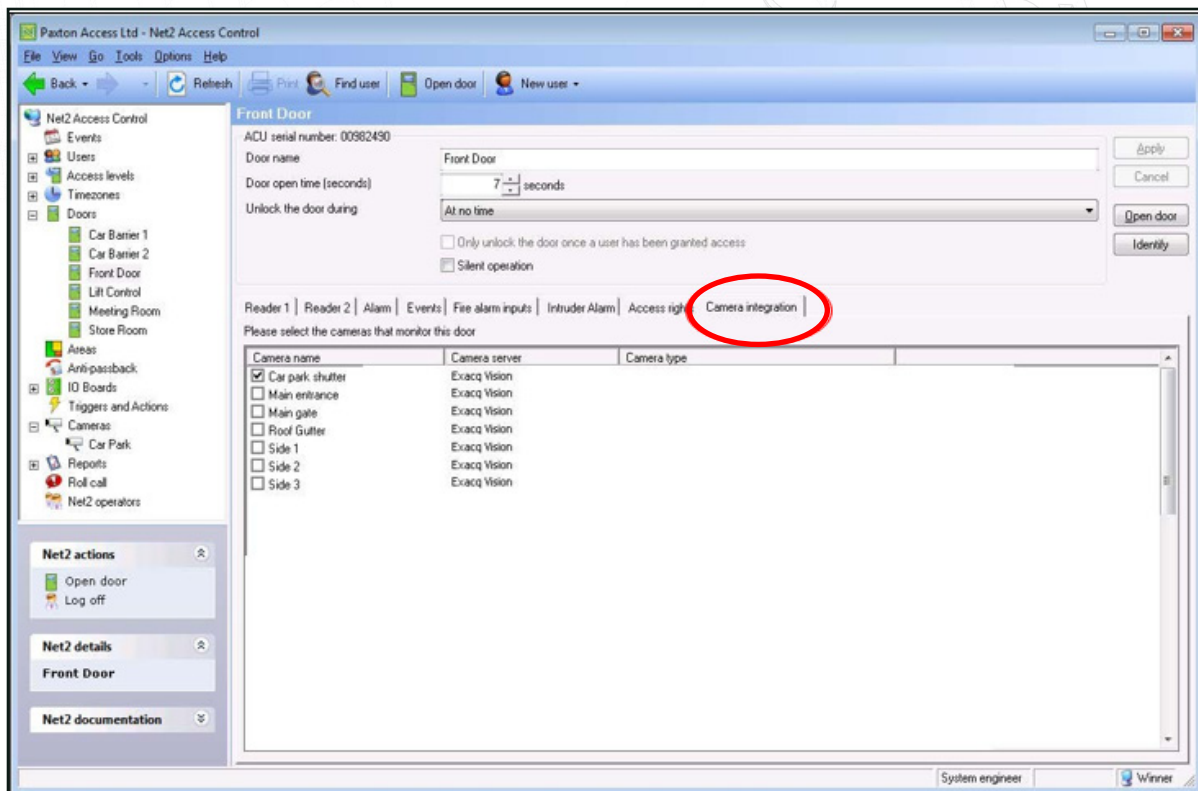
Click Apply, then OK to finish.

## Doors

Any door that is to be associated with a camera now needs to be configured.

Click on the Door in the tree view and select the Camera Integration tab.

Place a tick against the camera to be associated with this door and Apply. Multiple cameras can be selected from the list.

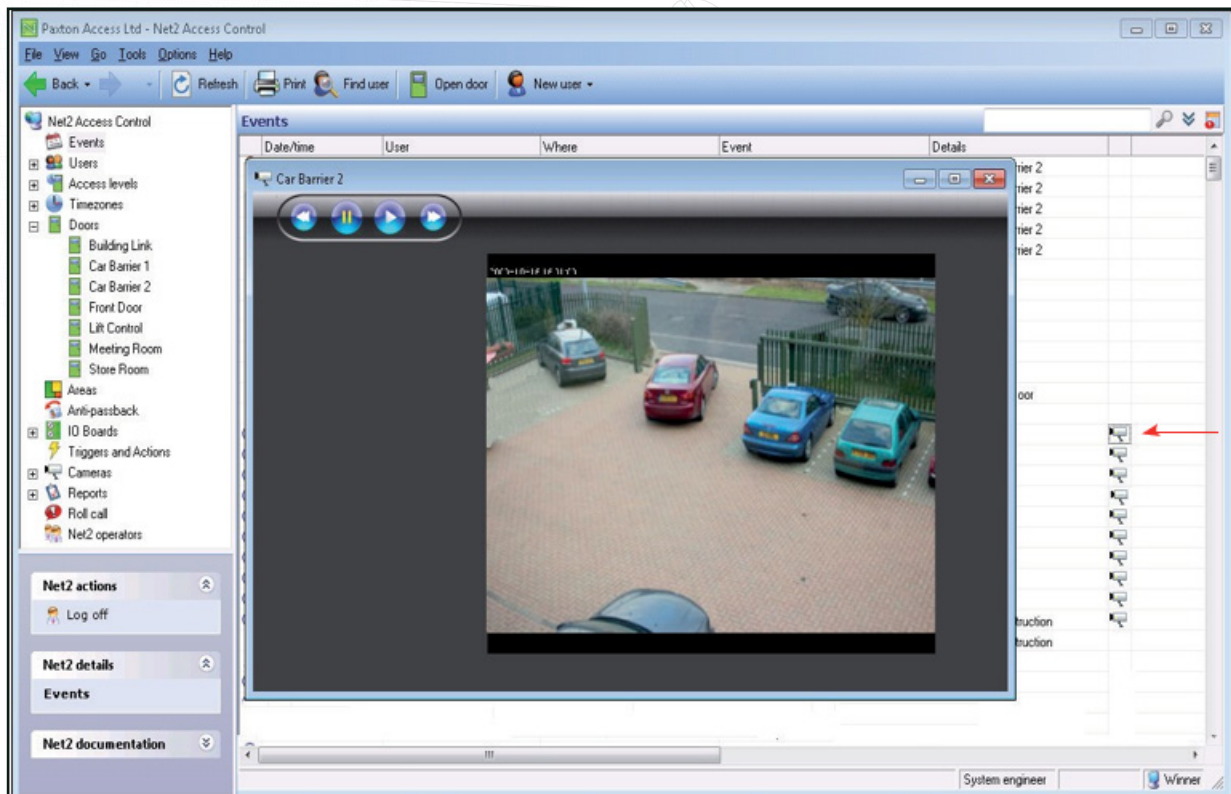




## Events

Doors that have been associated with a camera show an additional icon beside the event.

Double-clicking the icon displays the stored video images showing the event taking place.



The level of control available within the viewing screen depends on the supplier. Most vendors will allow you to control video from the popup, so as to see images leading up to the event.

Vendor specific documentation can be found at the following links:

AN1108 - Integrating Net2 with Pelco software - [paxton.info/4322](http://paxton.info/4322)

Integrating Net2 with Exacq Vision software - [paxton.info/4045](http://paxton.info/4045)

Integrating Net2 with Milestone software - [paxton.info/4046](http://paxton.info/4046)

Hikvision video integration software patch and instructions - [ftp://Hik\\_Paxton:Paxton\\_Hik@ftp.hikvision.com](ftp://Hik_Paxton:Paxton_Hik@ftp.hikvision.com)