



## How to add an Entry panel in Paxton10

### Overview

Entry panels can be added to Paxton10 and setup just like any other reader while also providing a video door entry solution.

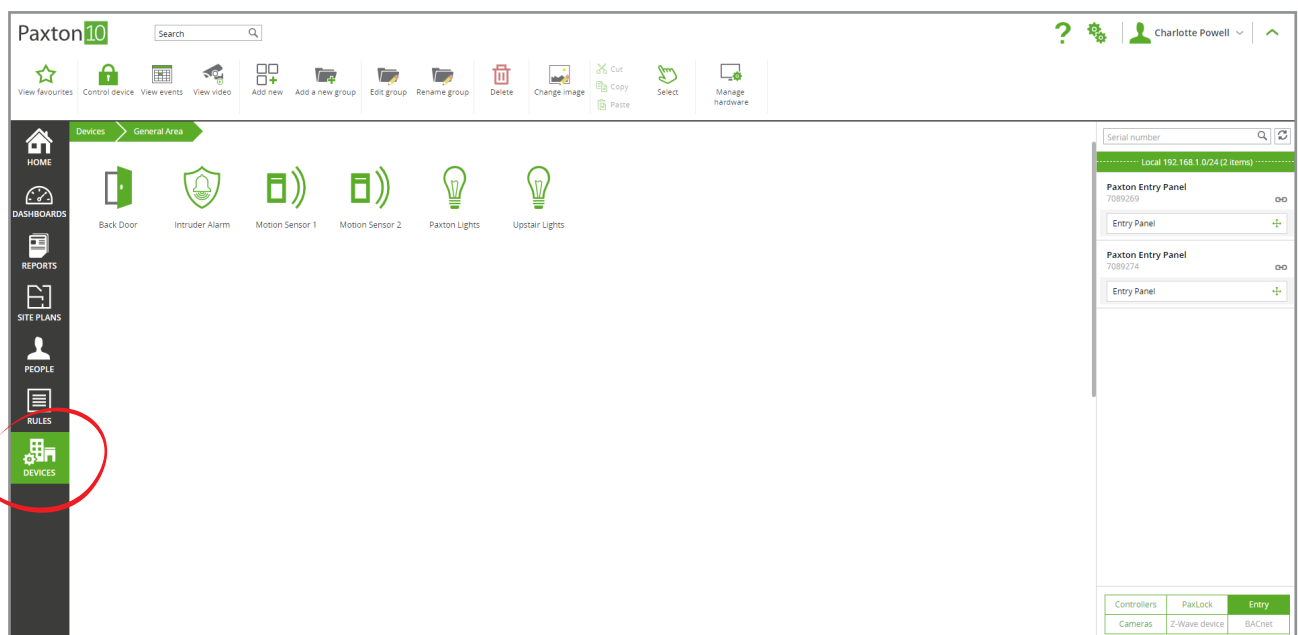
### Adding an Entry panel

Ensure the Entry panel is plugged into the network and powered.

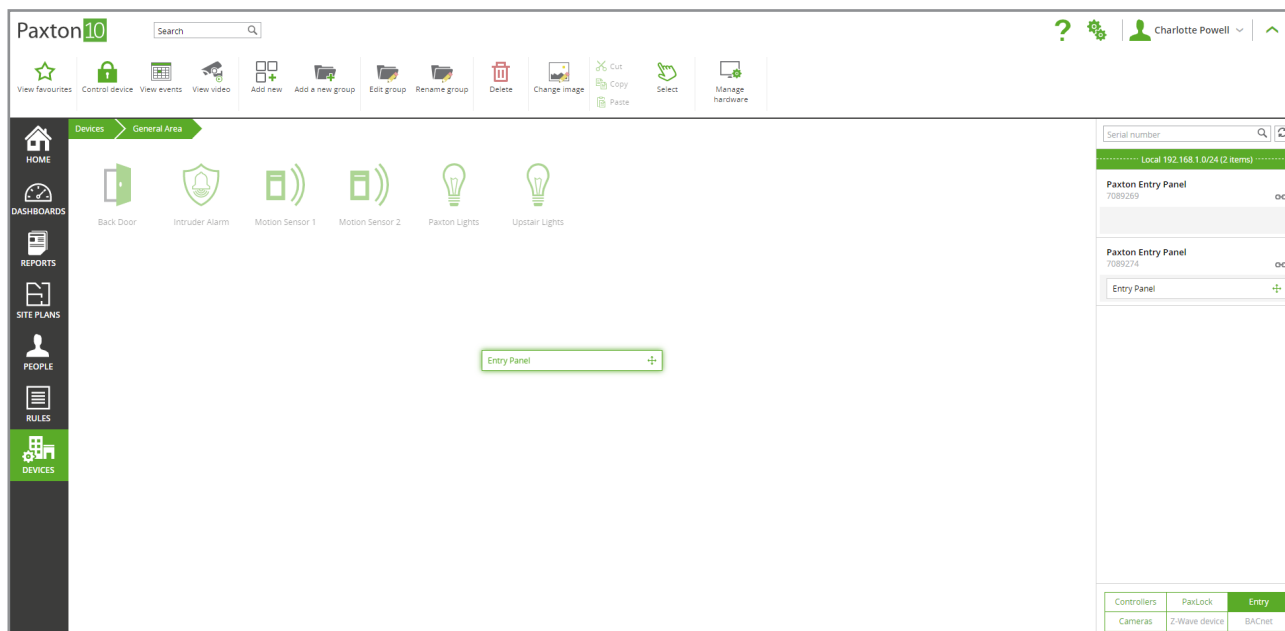
Note: When first powering up the Entry panel you must set the control unit serial number to 0.

1. Navigate to the '**Devices**' section
2. Under the devices panels select '**Entry**', all unmapped\* Entry panels will be listed.

\*unmapped Entry panels are those not currently associated with a Paxton10 device. Once bound and mapped to a device, the Entry panel will appear in the '**Hardware Management**' window.

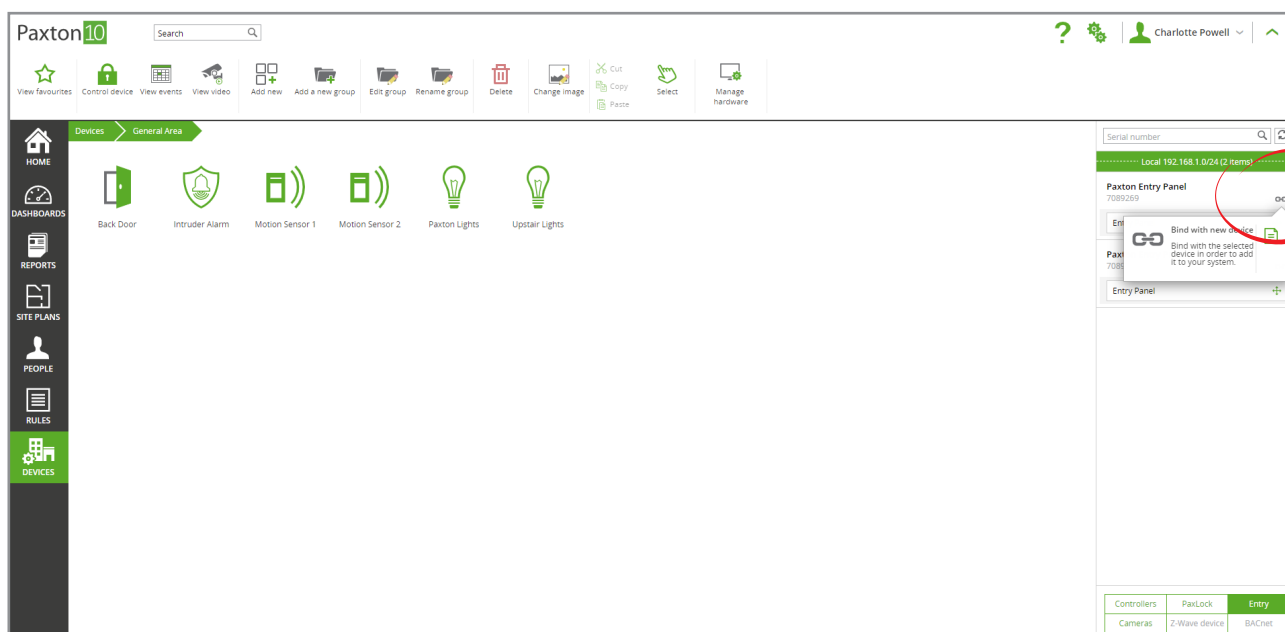


3. Click on the move icon under the Entry panel you wish to add to your system and drop it onto an existing device to map the Entry panel to the device



Once the Entry panel is mapped to a device in Paxton10, the Entry panel is then bound to that Paxton10 system, and can't be detected or controlled by any other system.

If it is not appropriate to create and map to devices at this stage, clicking the green 'link' icon next to each Entry panel in the right-hand side of the screen will also bind the Entry panel to the system, preventing any other systems from taking ownership.



## Managing Entry panels

Once an Entry panel is bound to a system, the Entry panel will be displayed in the Hardware Management window. It is here that you can see the hardware details, online and offline status and device mapping.

1. Navigate to the 'Devices' section
2. Click on 'Manage hardware'

## Bluetooth® settings

All Entry panels readers contain Bluetooth compatibility. This allows all panels to be used with Hands free credentials (Paxton10 Hands free keyfob), as well as with Smartphones and Smart Watches (using 'Smart credentials'). The Bluetooth reading mode of an Entry panel can be configured either at the panel itself, or via the Entry configuration utility.

At an Entry panel:

1. Access the Engineer menu by entering the engineer code
2. Go to 'Panel settings' -> 'Reader settings'
3. From here you can either go to 'Bluetooth® modes' to select one of the 4 Bluetooth reader modes or go to 'Bluetooth® verify' to enable/disable remote verification for Smart credentials

Via the Entry Configuration Utility:

1. Login to the site
2. Select your panel and navigate to the 'Operation' tab
3. From here you can select the Bluetooth® reader mode of the panel and enable/disable remote Bluetooth® verification for Smart credentials
3. Select 'Apply' to save any changes

