

Integrating Net2 with a fire alarm system

Overview

Net2 Professional can be configured to use one of the inputs on the Net2 ACU to accept an alarm signal from a fire alarm system to automatically open specified doors during an alarm condition.



Wiring the input

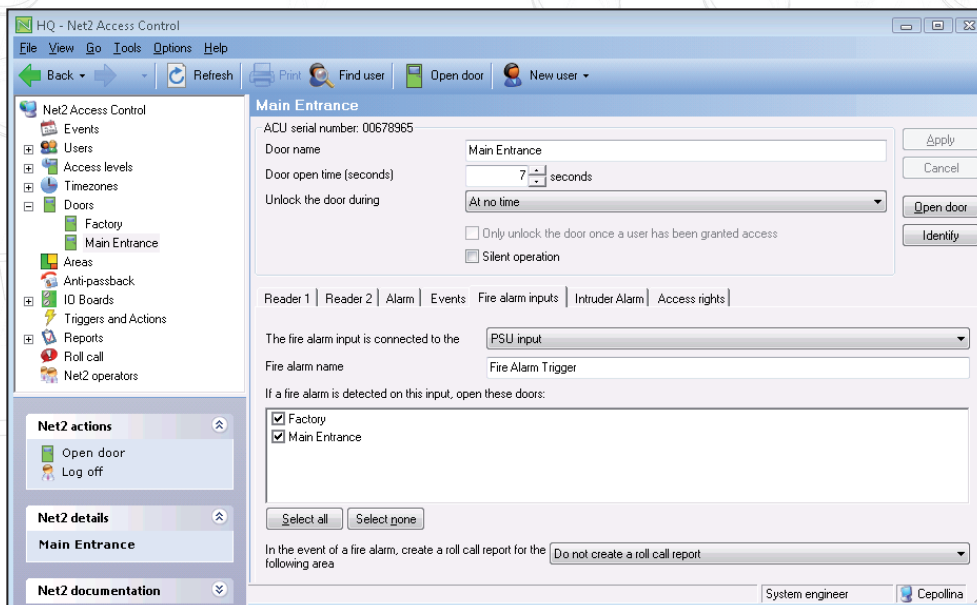
Any of the four inputs on a Net2 ACU, (contact, exit, tamper or PSU), can be used as a fire alarm trigger. Wire a loop between the chosen ACU input terminal and 0V via voltage free alarm contacts on the fire panel. More than one zone may be configured by using different ACU's as trigger points. (e.g. Building 1, Building 2, etc.) each with its own list of doors to unlock.

To be 'fail safe', the trigger must be a normally closed loop going open when the alarm is activated.

Configuring the Net2 software

The input is configured in the Net2 software to be the fire alarm trigger and defines the doors required to open on receipt of the alarm.

The screenshot below shows an alarm configured to operate from the PSU input on the "Main Entrance" ACU. When activated, this will automatically open the selected doors on the system and these doors will remain unlocked until the alarm is reset from the Net2 software.

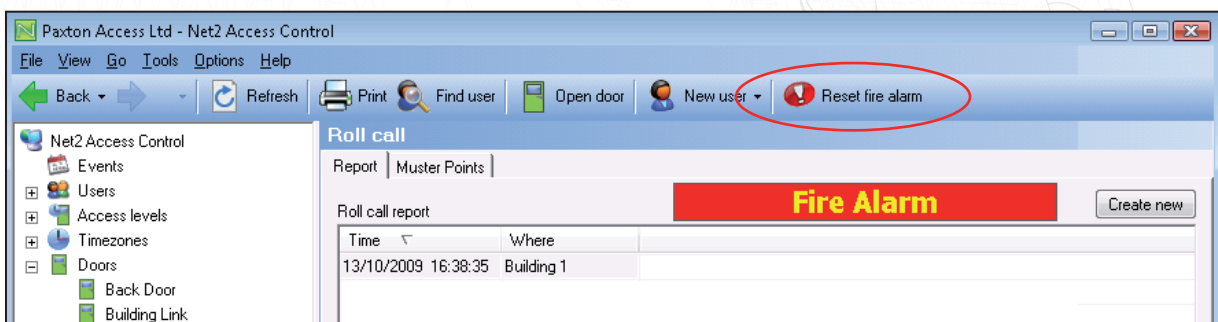


Net2 can also be configured to automatically produce a roll call report when the fire alarm input is activated. To enable this function, the Area for which the roll call report is to be produced must be selected from the drop down list at the bottom of the screen.

For information on how to configure areas and area groups, please see: [AN1023 - Configuring areas and area groups](http://paxton.info/978). < <http://paxton.info/978> >

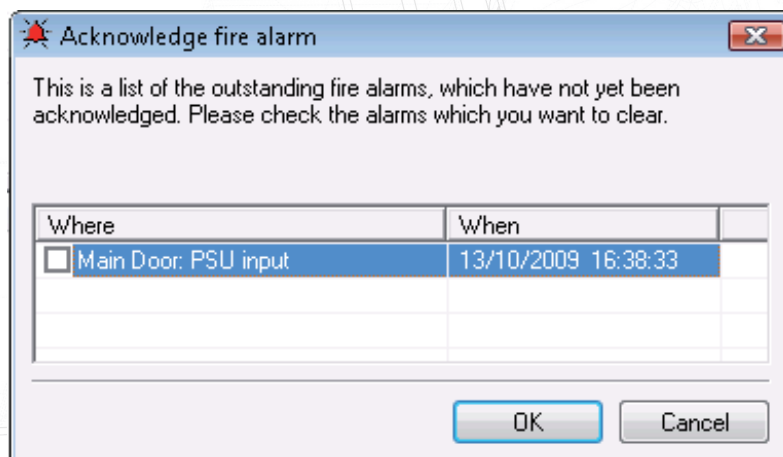
Resetting the Fire Alarm

When the Fire alarm has been triggered the following screen displays and a new button appears on the toolbar 'Reset fire alarm'.



Resetting the actual fire alarm itself will NOT reset this condition or relock the doors. Unless the 'automatically reset fire alarm' feature is enabled.

When this button is pressed Net2 displays a window listing all of the fire alarms that have not yet been reset. To reset an alarm, check its' box and click 'OK'. When all fire alarms have been reset the 'Reset Fire Alarm' button disappears from the Net2 toolbar until the next alarm occurs.



Automatically reset fire alarm feature

Pro Software Only - **not** available when using the EXIT input until v5.03.3529

When the fire alarm is reset at the fire panel, Net2 will send a command to close all fire doors selected within the list of doors to open in the event of a fire.

An event will be listed in Net2 showing the fire door was closed by 'System'.

To enable this feature, ensure the 'Automatically reset fire alarm' check box is selected within the 'Fire Alarm Input' tab of the door settings screen.

Important

It is important to remember that this is not a 'fail safe' system as the ACU's need to be in active communication with the Net2 server to receive the door unlock commands.

(An ACU that is used as a trigger will unlock itself immediately (if configured to unlock). This can be used to increase the reliability of the system by hardwiring triggers to all essential doors. This still relies on the ACU being powered and active. For 100% reliability, independent fire door relays should be fitted)

An additional method for releasing the doors should also be installed; this is most commonly a break glass unit. The requirements of each individual site will vary. The fire officer for the site will often specify the requirements for the system and should always be consulted.

**The Net2 server must be running in order for the fire door unlock facility to work correctly.
This requirement is also applicable to the automatic roll call report.**