

IDEMIA Setup Guide

Overview

This document describes **1** of the options on how to configure the Morpho Manager Bio Bridge integration with Paxton Net2.

A Biometric Enrolment button can be added to the Add Users form within the Net2 software, making it more convenient to enroll the biometrics of new users.

The document describes the configurations needed to get the MA Sigma series readers working in a Biometric/Fingerprint Only authentication mode.

Further information about Morpho Manager and the Morpho readers can be found in the installation directory C:\Program Files\Morpho\Morpho Manager\Client.

Versions of software used in this documentation:

Net2: v5.04 up to v6.01.8113

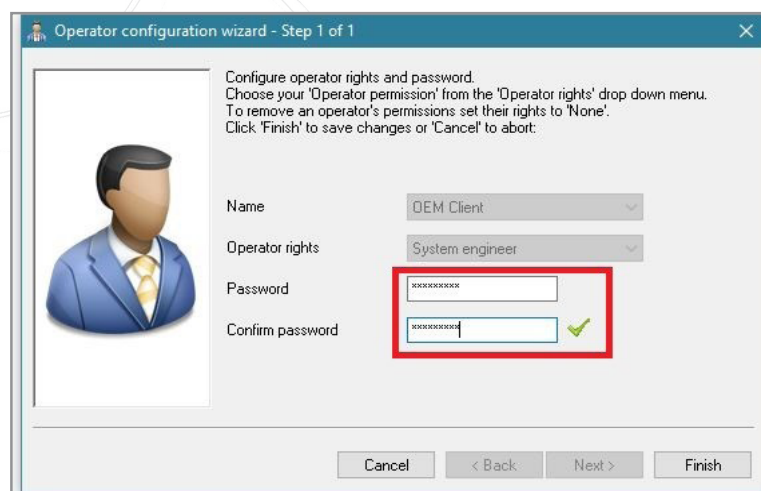
Morpho Manager: 13.5.1

When installing Morpho Manager, ensure that an instance of SQL Express is installed instead of using the default Compact database

Setting up Net2 Software:

Create a new Operator or use OEM Client

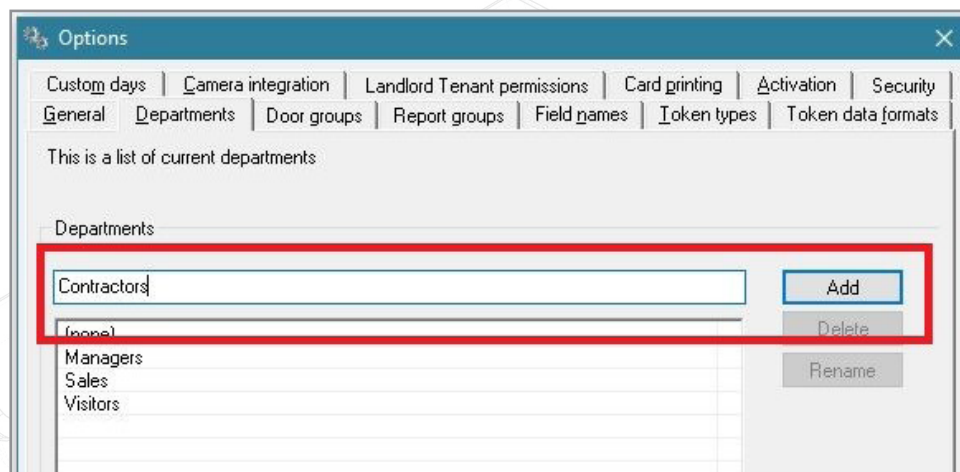
A new Net2 operator, with System Engineer rights, needs to be added to enable Bio Bridge to make a connection to the Paxton Net2 system. For this example, I have select the **"OEM Client"** and I changed the password to **123456789**.



CREATE DEPARTMENTS IN NET2

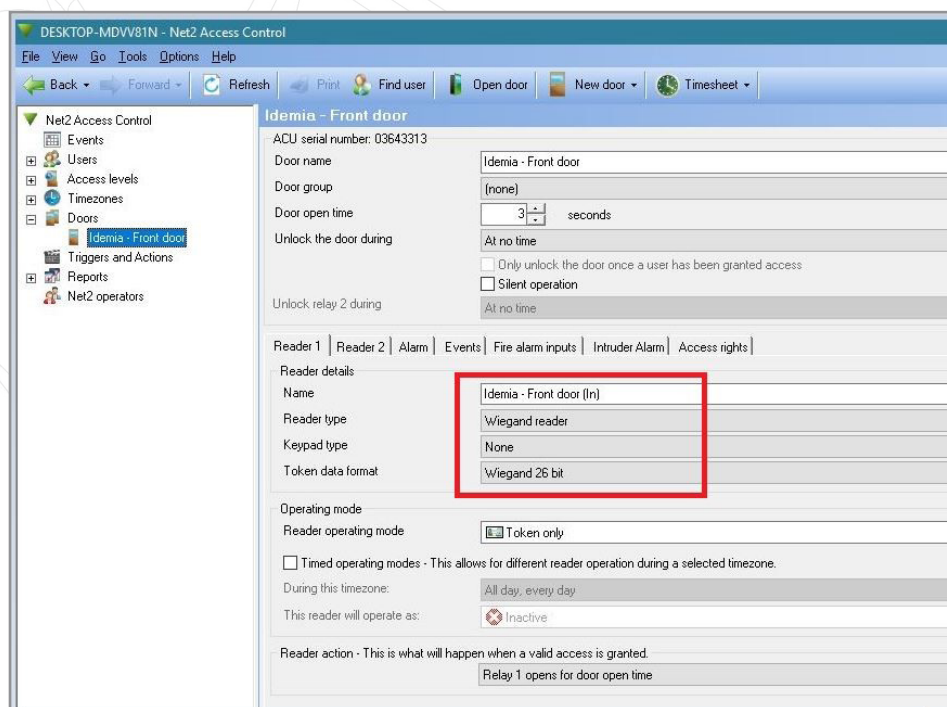
Departments are used by Net2 to make sure users have access through the correct doors. One or more Departments can be added to Paxton Net2, later these Departments will be linked to **MorphoManager's User**

Distribution Groups. Placing a user in the Paxton Net2 Department will then govern on to which Morpho readers the users profile will be distributed by Morpho Manager. Paxton Net2 can only grant access to a user when the users profile is present on the Morpho reader at that door. In this example three groups were created in Net2 called Visitors, Managers, Sales & Contractors.



CONFIGURE THE READER TYPE IN NET2

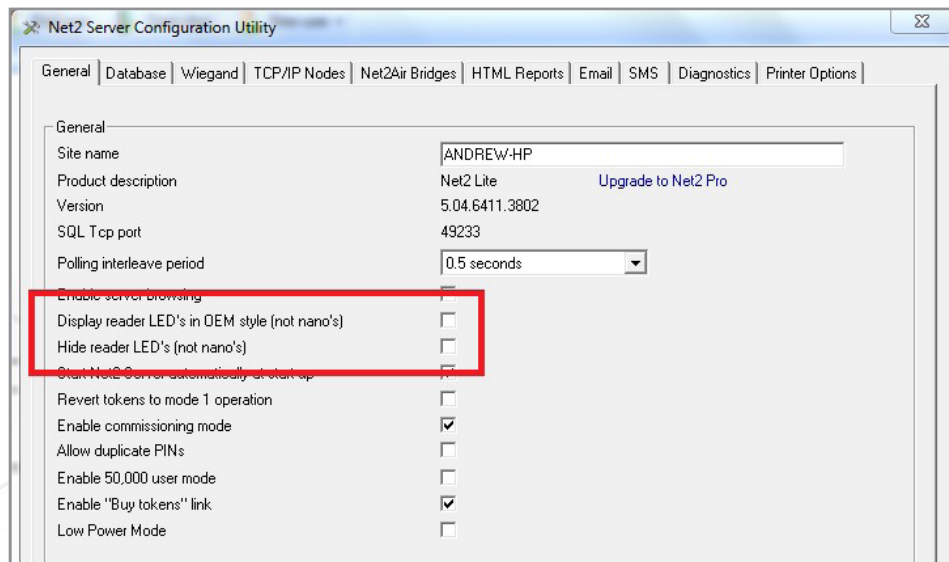
Configure the Reader Type as “**Wiegand reader**” and the Token data format as “**Wiegand 26 bit**”



CONFIGURATION IN NET2 SERVER CONFIGURATION UTILITY

The following configuration needs to be made in the Net2 Server Configuration Utility to enable the MA Sigma series devices to correctly interpret the state of the Green Led line to display the Access Granted & Access Denied message. This Access Granted message will only be displayed on the MA Sigma series device when the Net2 panel has granted access to the user.

Both the **Display reader LED's in OEM style** & **Hide reader LED's** need to be deselected as shown below.

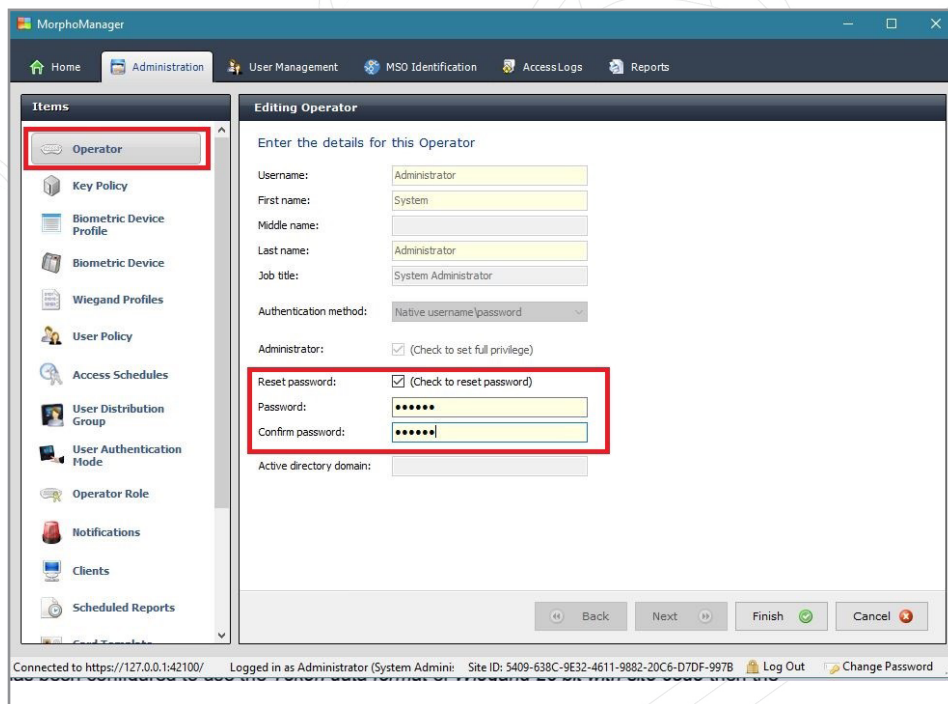


Setting up MorphoManager:

EDITING THE ADMINISTRATOR PASSWORD.

Once the software has been installed the default password of the Administrator user needs to be changed. The Administrator has full access rights in the MorphoManager software.

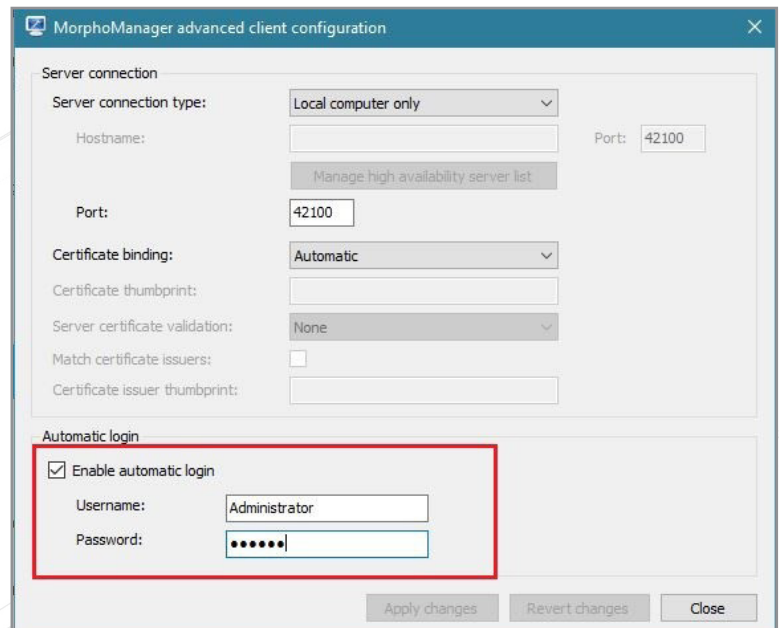
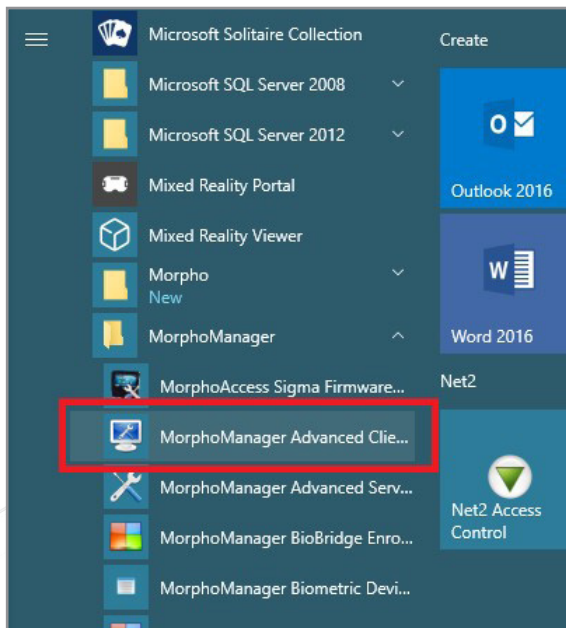
Log into the MorphoManager Client using the default username of **Administrator** and password "**password**". Under Administration -> Operators highlight the Administrator and click on **Edit**. Click on the Reset password checkbox and then enter a new password for the Administrator operator. Click on **Finish** to save the changes.



SETTING TO "AUTO LOGIN"

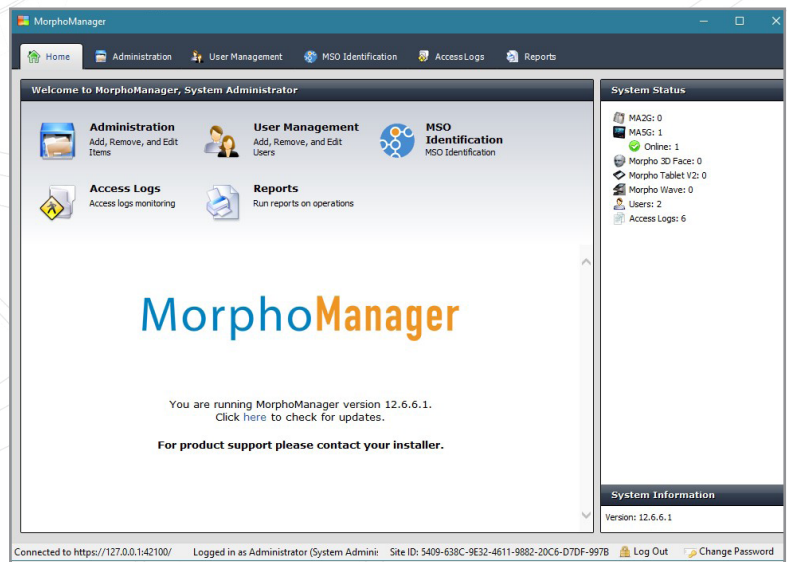
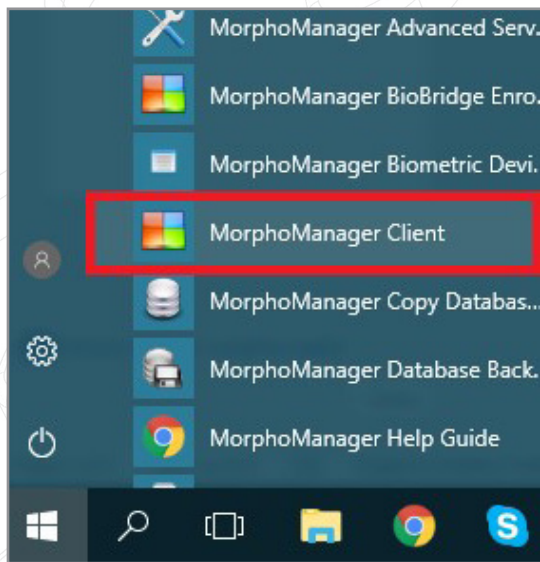
It is recommended that the MorphoManager client is configured to "**Auto Login**" as this will nullify the need to enter the login details every time MorphoManager or Biobridge is used.

Goto "Programs", under "MorphoManager", select "MorphoManager Advanced Client Configuration"



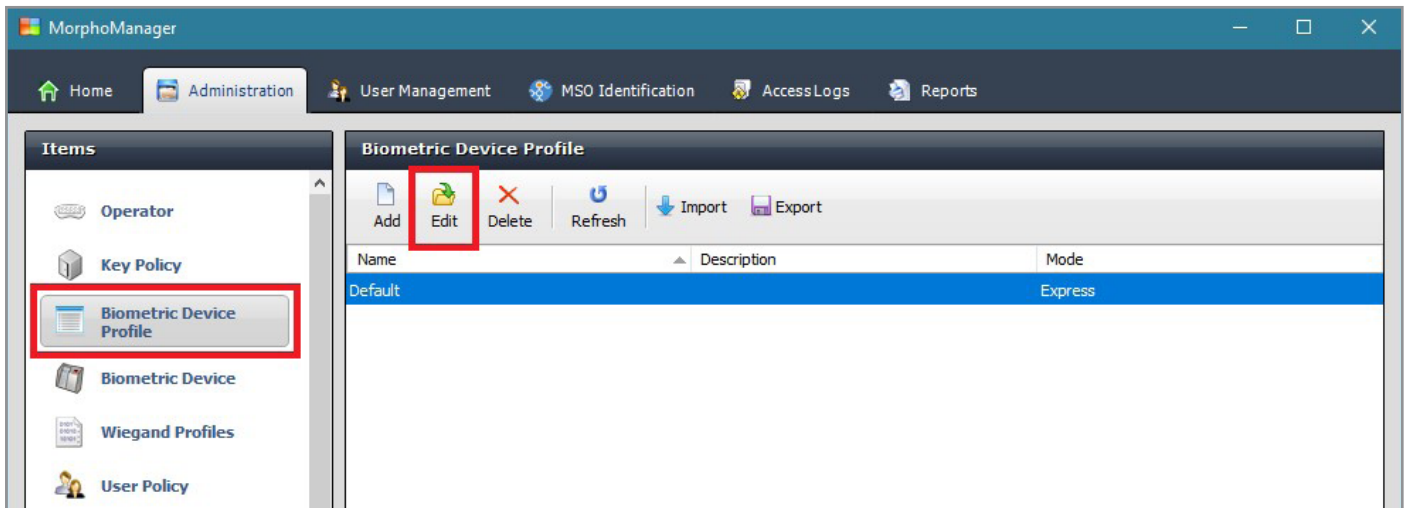
CREATING A BIOMETRIC DEVICE PROFILE

Open MorphoManager Client



A Biometric Device Profile (BDP) in MorphoManager defines common settings and parameters for the MA Sigma series devices. When the device is added to MorphoManager and a BDP is selected MorphoManager then applies the settings from this BDP to the device.

MorphoManager creates a **Default BDP** for a device to work in Biometric 1:Many mode. For this BDP profile to work with Paxton Net2, some of these settings need to be changed.



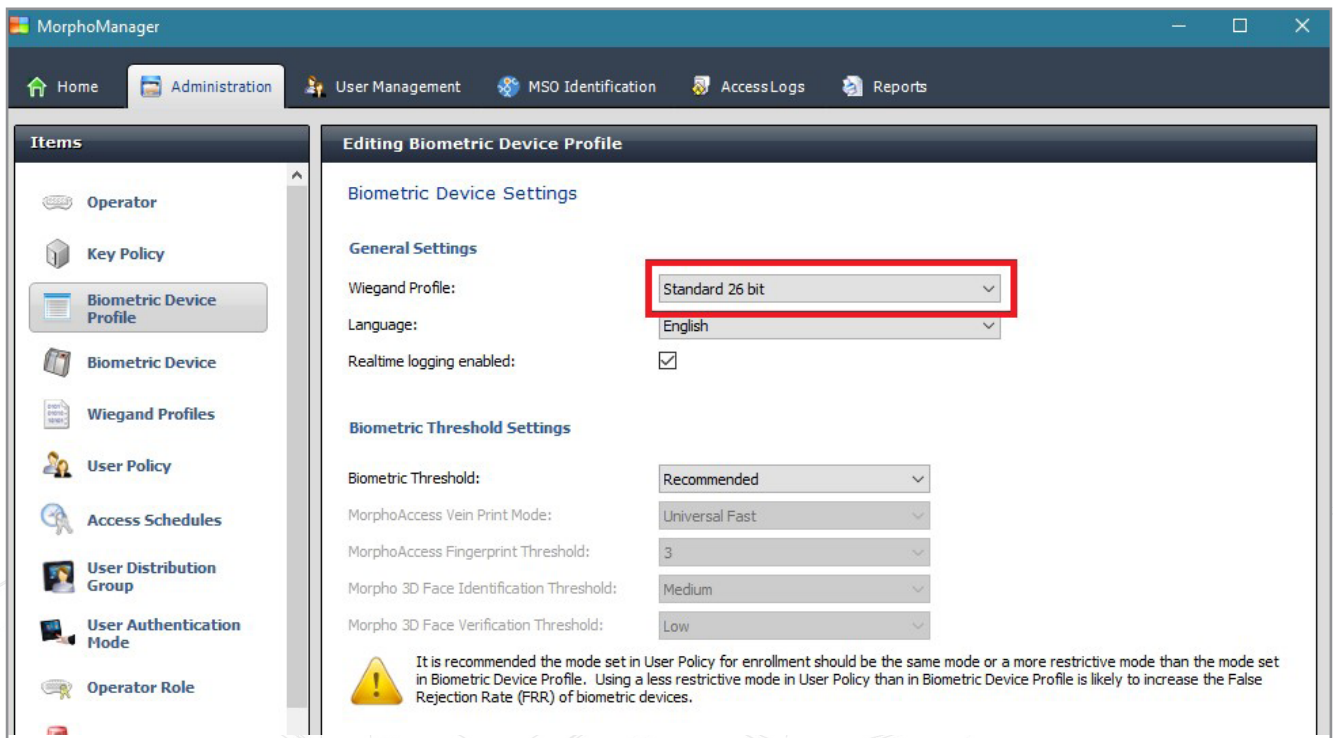
First highlight the Default and select **Edit**.

The form below will now be shown, click on **Next** as no changes need to be made on this first form.

The screenshot shows the 'Editing Biometric Device Profile' form. The form is titled 'Enter details for the Biometric Device Profile'. It contains the following fields and options:

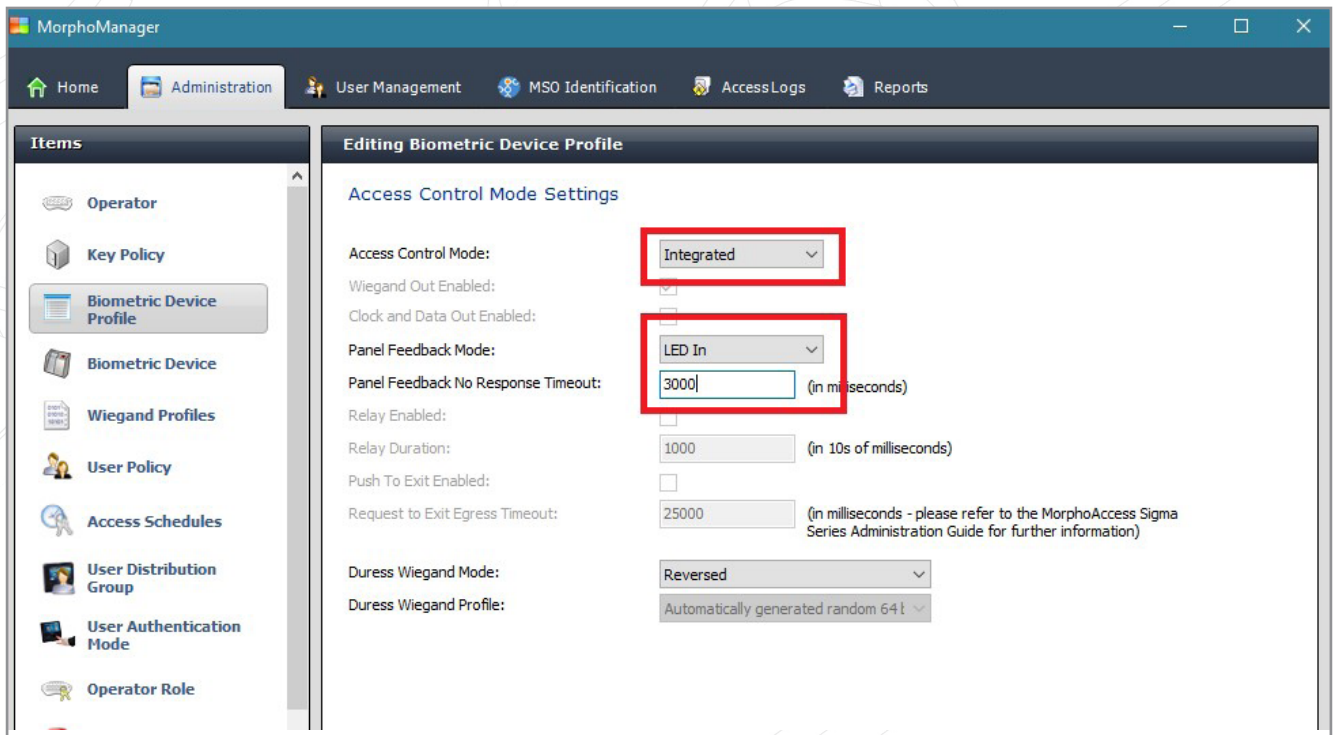
- Name:** A text box containing 'Default'.
- Description:** An empty text box.
- Configuration Mode:** A dropdown menu set to 'Express'.
- Log Retrieval Enabled:** A checkbox that is unchecked.
- Log retrieval interval:** A text box containing '300' followed by '(seconds)'.
- Duplicate check on biometrics:** A checkbox that is unchecked.
- MorphoAccess heartbeat interval:** A text box containing '30' followed by '(seconds)'.
- Key Policy:** A dropdown menu set to 'Default'.
- MA Sigma, MA Sigma Lite, MA Sigma Lite+, MA Sigma Extreme Only Settings:**
 - Allow Remote Enrollment:** A checkbox that is unchecked.
 - Default User Policy for Remote Enrollment:** A dropdown menu set to 'Default'.

In the Biometric Device Settings window below, change the Wiegand Profile to **Standard 26 bit**, then click on **Next** until you see the "Access Control Mode Settings" screen.



The Access Control Mode should be set to "Integrated."

If the Paxton Net2 panel is going to send feedback to the Morpho reader when a person has been accepted, then change the Panel Feedback Mode to "LED In" and change the Panel Feedback No Response Timeout to "3000" (milliseconds). When the above has been done click on "Finished"



ADD READERS INTO MORPHOMANAGER

Readers need to be added to the system before they can be added to a User Distribution Group.

In the MorphoManager home screen navigate to Administration -> Biometric Device and click on **Add**.

MorphoManager

Home Administration User Management MSO Identification Access Logs Reports

Items

- Biometric Device Profile
- Biometric Device**
- Wiegand Profiles
- User Policy
- Access Schedules
- User Distribution Group
- User Authentication Mode
- Operator Role
- Notifications
- Clients
- Scheduled Reports
- Card Template

Editing Biometric Device

Enter the details for this Biometric Device

Name: Idemia

Description:

Location: Front Door - In

Asset ID: 001

Export Value:

Time Zone: (UTC+02:00) Harare, Pretoria

Hardware Family: MA Sigma, MA Sigma Lite, MA Sigma Lite +, MA Sigma Extreme

Serial Number:

Hostname\IP Address: 192.168.1.100

Port: 11010

Biometric Device Profile: Default

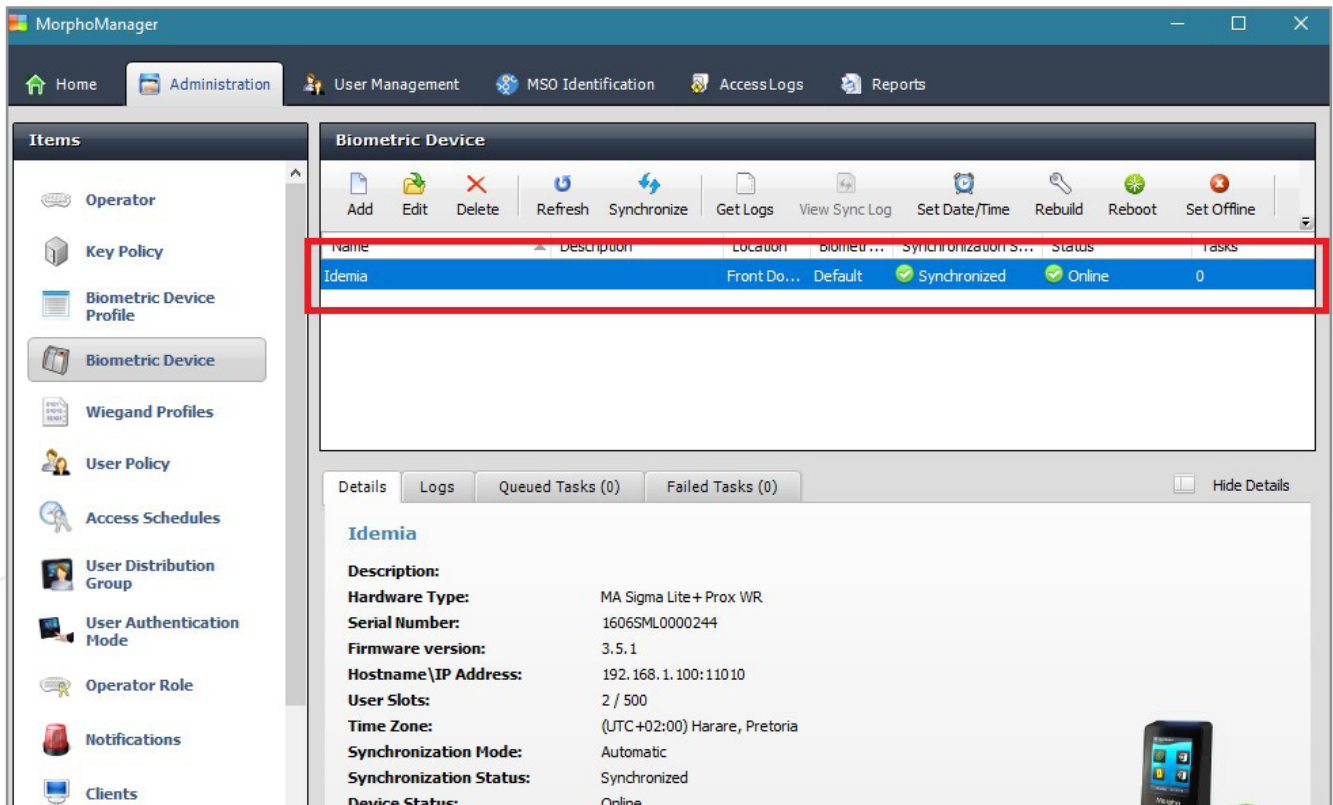
Include in Time & Attendance Exports: ☐

Change User Onsite / Offsite Status: ☐

Onsite Key: No Key

Offsite Key: No Key

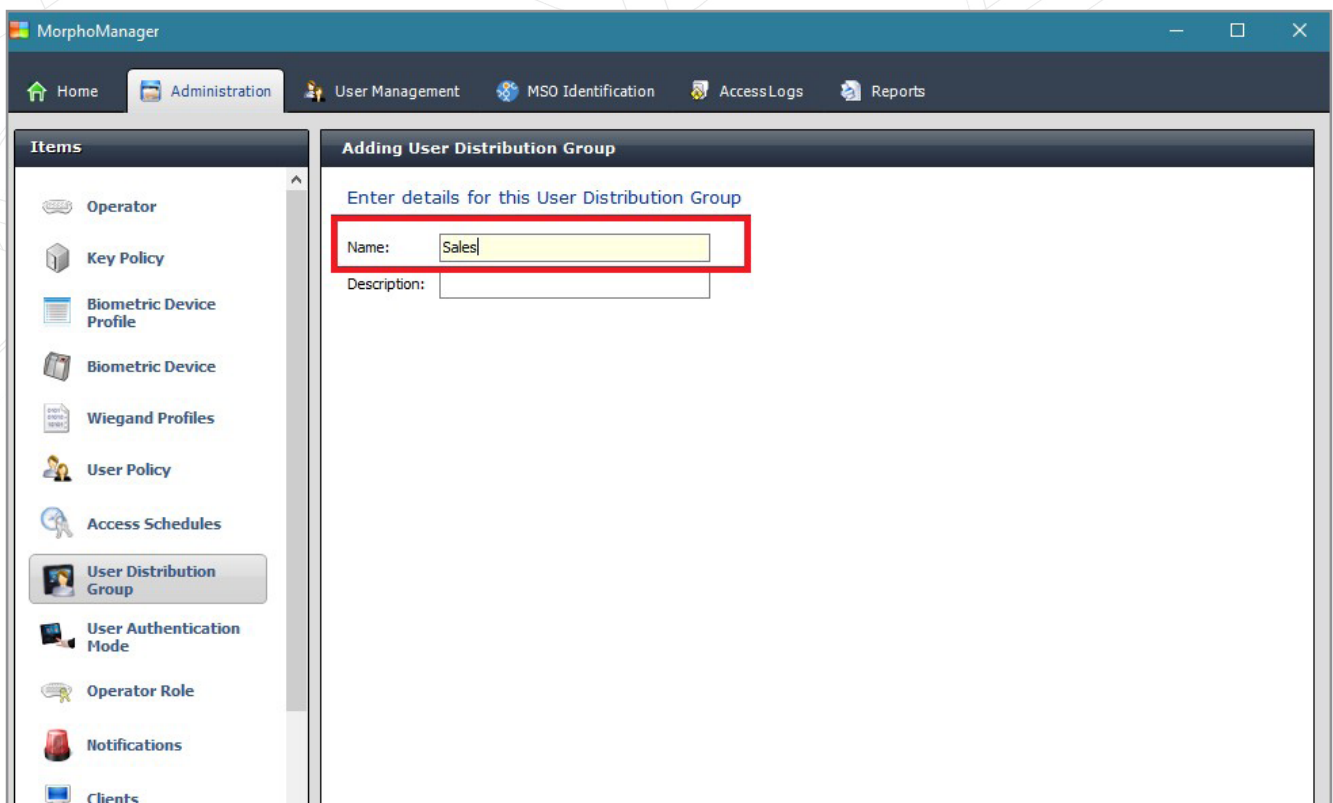
In the Biometric Device window the new reader will be added and an Online/Offline Status will be shown along with a number of **Tasks**. Once the reader has come online then MorphoManager will make all the configuration changes to the Morpho reader as per the BDP, once this is complete the Morpho reader will restart.



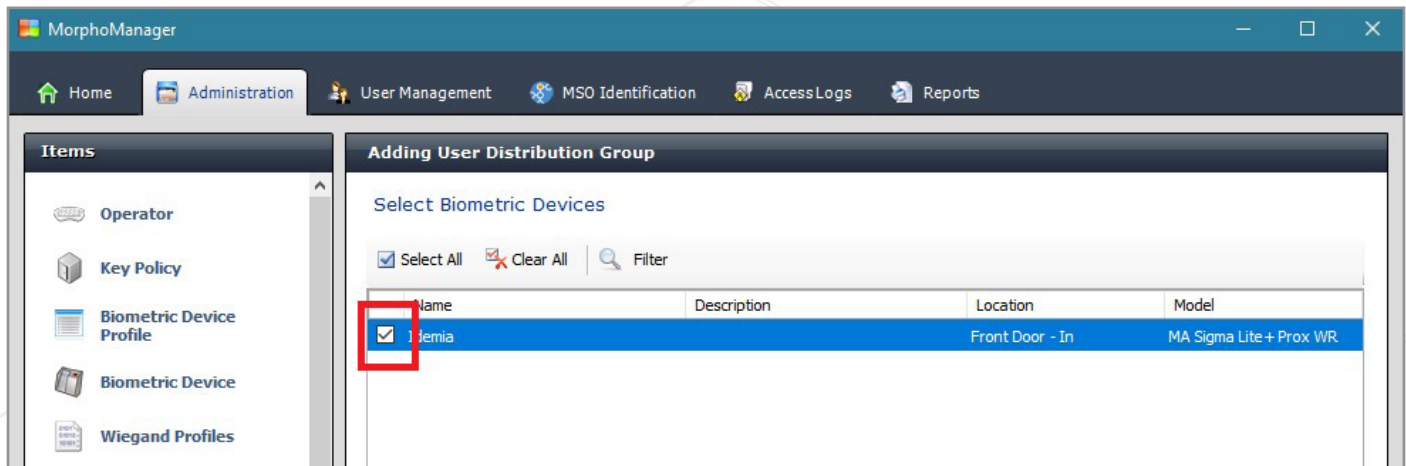
CREATE USER DISTRIBUTION GROUPS

User Distribution Groups are designed to distribute users onto groups of Morpho readers.

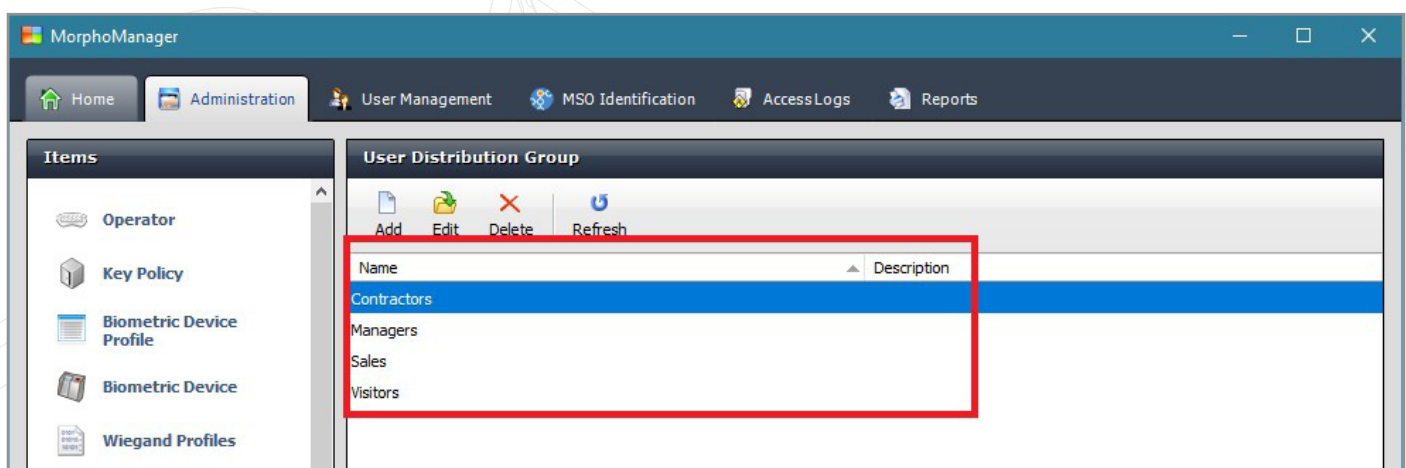
In the MorphoManager home screen navigate to Administration -> User Distribution Group. In the User Distribution Group window click **Add** and give the new group a Name from the departments list in Paxton Net2 e.g. **Sales**. Click **Next**.



The window shows a list of all the readers that have been added to MorphoManager, select the Morpho readers you want a person who is a member of this User Distribution Group to have access through. Once you have selected the appropriate readers then click on **Finish**. A Morpho reader can be a member of one or more User Distribution Groups.



Once all the groups that have been created in MorphoManager will be shown in the main “User Distribution Group”

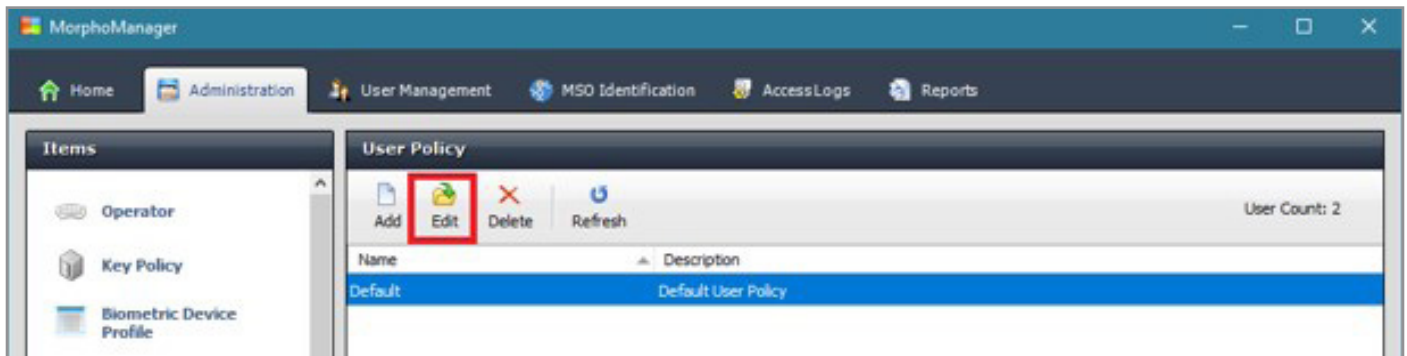


CREATE USER POLICIES

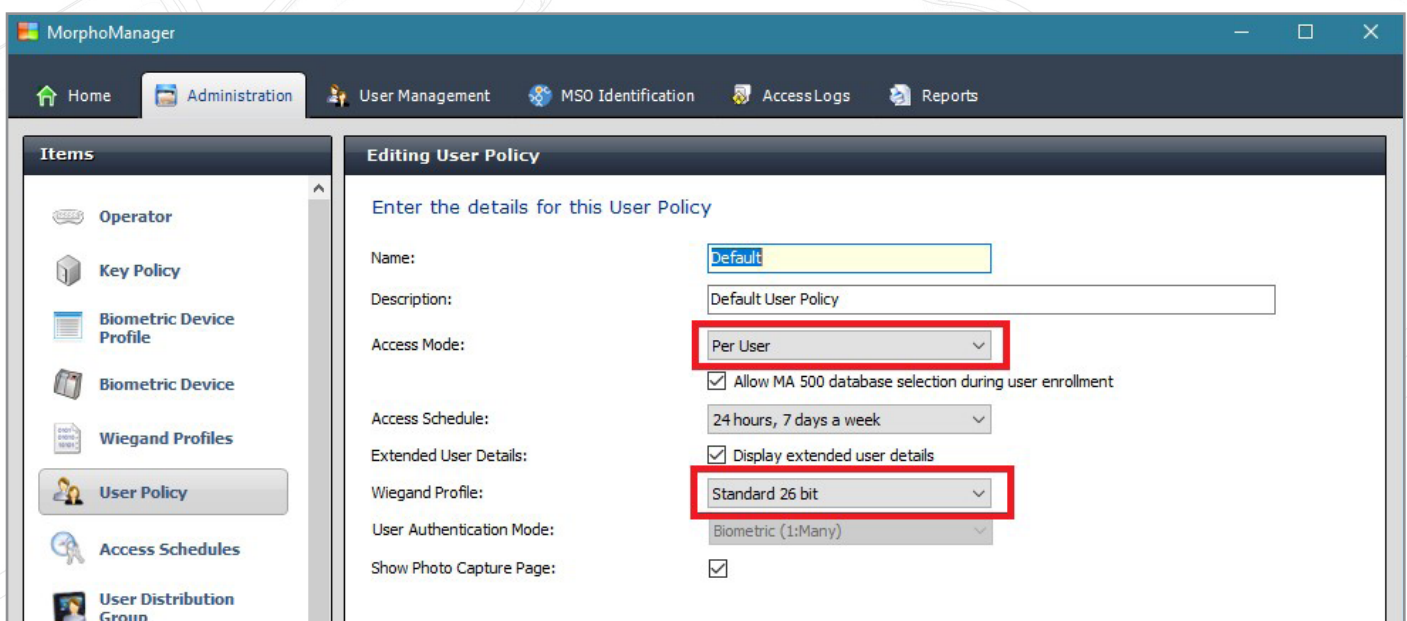
User Policies apply an Authentication method to the members of this Policy. To configure BioBridge a User Policy with an **Access Mode of Per User** must be selected.

A **Default** user policy will already be created in MorphoManager, this uses an Authentication Mode of Biometric (1:Many).

Highlight the Default user policy and select **Edit**.



Change the **Access Mode to Per User** and change the Wiegand Profile to the same Wiegand Profile that was used when adding Morpho readers to the system e.g. Standard 26-bit. Click on Finish.



CONFIGURE MORPHOMANAGER'S BIOBRIDGE

From the Home page in MorphoManager navigate to the BioBridge tab through **Administration -> System Configuration**. This is where the link between the Paxton Net2 & MorphoManager's BioBridge systems will be created.

In the System drop down menu select Paxton Net2 and the click on the **Configure Connection** button.

File Explorer path: This PC > Windows (C:) > Program Files (x86) > Paxton Access > Access Control

| Name | Date modified | Type |
|-------------------|------------------|-------------|
| ApiLicences | 06/08/2020 12:32 | File folder |
| Application notes | 12/05/2020 16:24 | File folder |
| ar | 09/07/2020 11:27 | File folder |
| bg | 09/07/2020 11:27 | File folder |
| cs | 09/07/2020 11:27 | File folder |
| da | 09/07/2020 11:27 | File folder |
| de | 09/07/2020 11:27 | File folder |
| DvrMiniDrivers | 12/05/2020 16:23 | File folder |
| el | 09/07/2020 11:27 | File folder |
| en-us | 09/07/2020 11:27 | File folder |
| es | 09/07/2020 11:27 | File folder |
| es-mx | 09/07/2020 11:27 | File folder |
| fi | 09/07/2020 11:27 | File folder |

Net2 Server: 127.0.0.1 or localhost, if both the Paxton Net2 & MorphoManager software is installed on the same computer. Enter the IP address of the Net2 server if it is located on a different PC.

Port: leave as the default 8025.

Username: OEM Client – As per **Net2** (You could have created any operator in Net2 with **System engineer** rights)

Password: Same password you gave the operator in **Net2**

Click on **OK**.

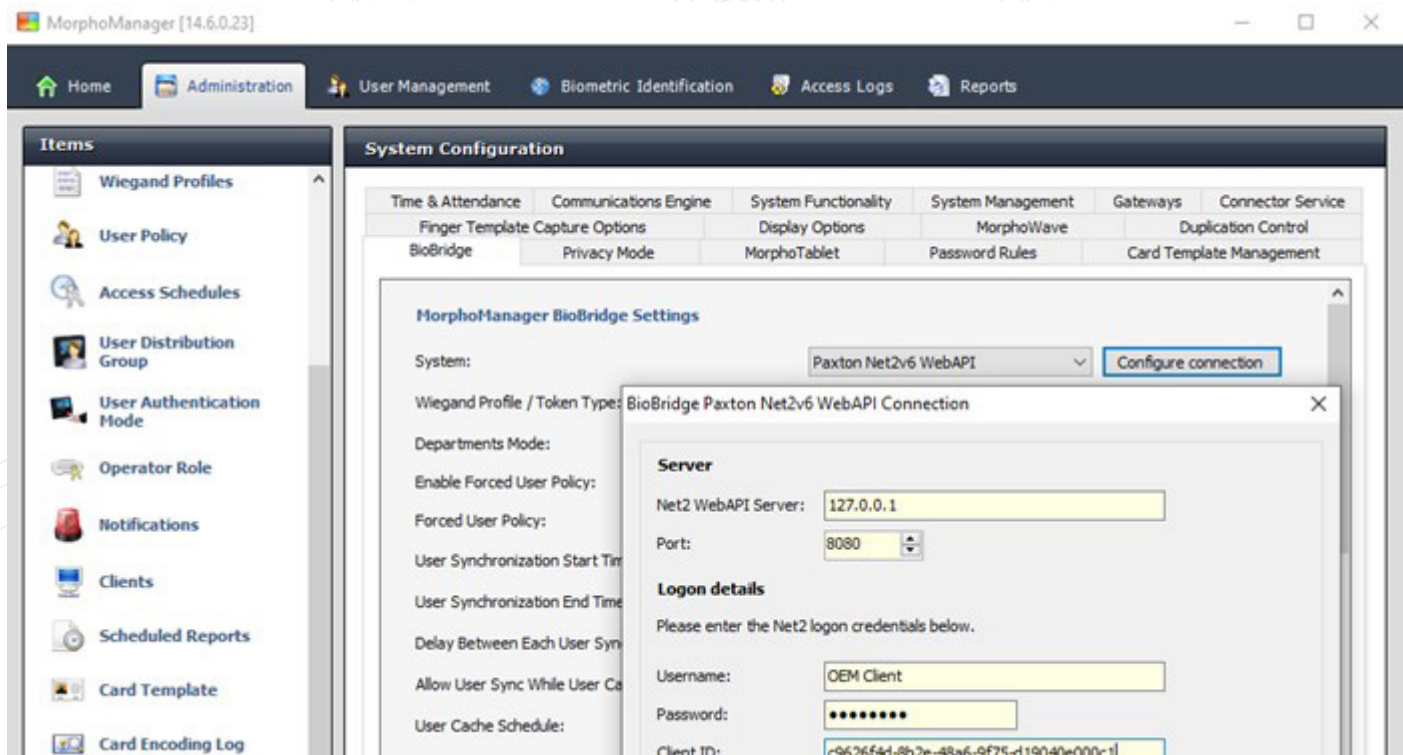
If everything has been configured correctly you should see that the Departments in Paxton Net2 have been mapped to the User Distribution Group in MorphoManager, see below.

| Windows (C:) > Program Files (x86) > Paxton Access > Access Control > ApiLicences | | | |
|---|------------------|----------|------|
| Name | Date modified | Type | Size |
| c9626f4d-8b2e-48a6-9f75-d19040e000c1 | 21/09/2020 08:18 | LIC File | 1 KB |

If the names for the **Departments** in Paxton Net2 are different from the names used for the **User Distribution Groups** in

MorphoManager then you can use the **Manual Department Mode**. The dropdown menus in the User Distribution Group Mappings are then used to manually map the two together.

The BioBridge needs a **Wiegand Profile / Token Type** configured, BioBridge will only synchronise users who have this Token Type configured on their profile in Net2. In this example the Fingerprint **Verification Number** Token is used. Click on **Save** to save the settings.



INSTALLING THE MORPHOMANAGER BIOBRIDGE ENROLMENT BUTTON.

The enrolment button in Paxton Net2 was added in MorphoManager v12.6.3.

The Enrolment button is added to the Add User window of the Paxton Net2 software. This button enables the Biometric Enrolment within MorphoManager to be started from within Paxton Net2 when adding a new user into the system.

To install the enrolment button, the file **ID1.MM.PaxtonNet2EnrollmentButton.exe** needs to be run from the MorphoManager client folder within **Program Files (x86)**.

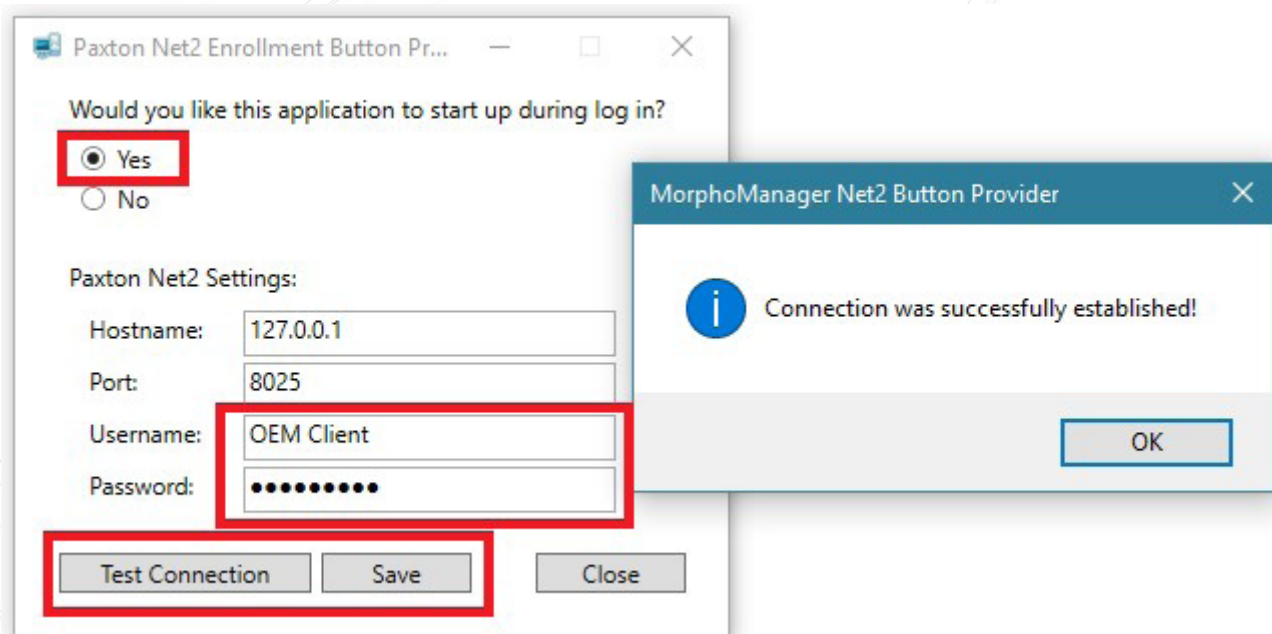
If the defaults were used during the MorphoManager installation this can be found in:

C:\Program Files (x86)\Morpho\MorphoManager\Client.

After this file has been run a **Paxton Net2 Enrolment Button Provider** icon the following icon will appear in the Windows Taskbar, as shown below.



Right click on the icon and then select **Options**, enter the details of the Net2 Operator added in the previous steps.



Click on the **Test Connection** button to make sure the settings are correct, if the connection is successful then click on **Save**.

ADDING AND ENROLLING USERS IN NET2

You can now add and enroll users directly from Net2, using the enrolment button which has been injected to the **"Add User"** form.

When adding a new user: **Step 1** below:

Ensure that you complete all the fields:

First name: e.g "Joe"

Surname: e.g "Soap"

Select the department: e.g “Managers”
Select the Access level: e.g “All hours, all doors”

Step 2:

Token number: Enter a token number: e.g “3269”

Token type: Select “Fingerprint verification.”

Note:

It is useful to use “Auto PIN” to generate random pin codes to ensure there are no duplicates.

DO NOT use token numbers higher than “65535” on 26-bit Wiegand.

Step 3:

Select the “Add user and Enroll biometrics button”

BioBridge enrolment will open in the Net2 workspace window.

You will see the follow screens in succession.

