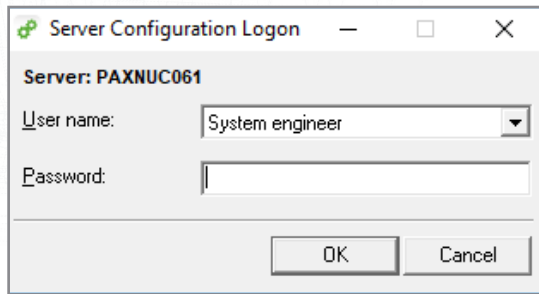


# Creating a backup in Net2

## Backing up in Net2

First log in to Net2 Configuration Utility.



Server Configuration Logon

Server: PAXNUC061

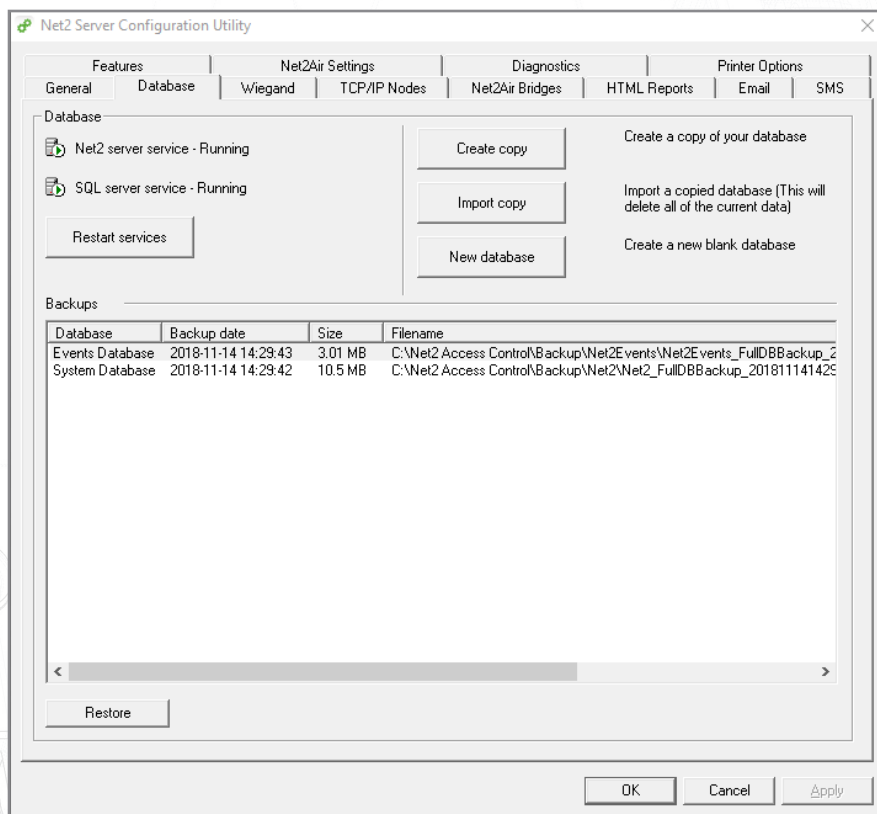
User name: System engineer

Password:

OK Cancel



Next Click on the database Tab on the top.



Net2 Server Configuration Utility

Features | Net2Air Settings | Diagnostics | Printer Options

General | Database | Wiegand | TCP/IP Nodes | Net2Air Bridges | HTML Reports | Email | SMS

Database

Net2 server service - Running

SQL server service - Running

Restart services

Create copy: Create a copy of your database

Import copy: Import a copied database (This will delete all of the current data)

New database: Create a new blank database

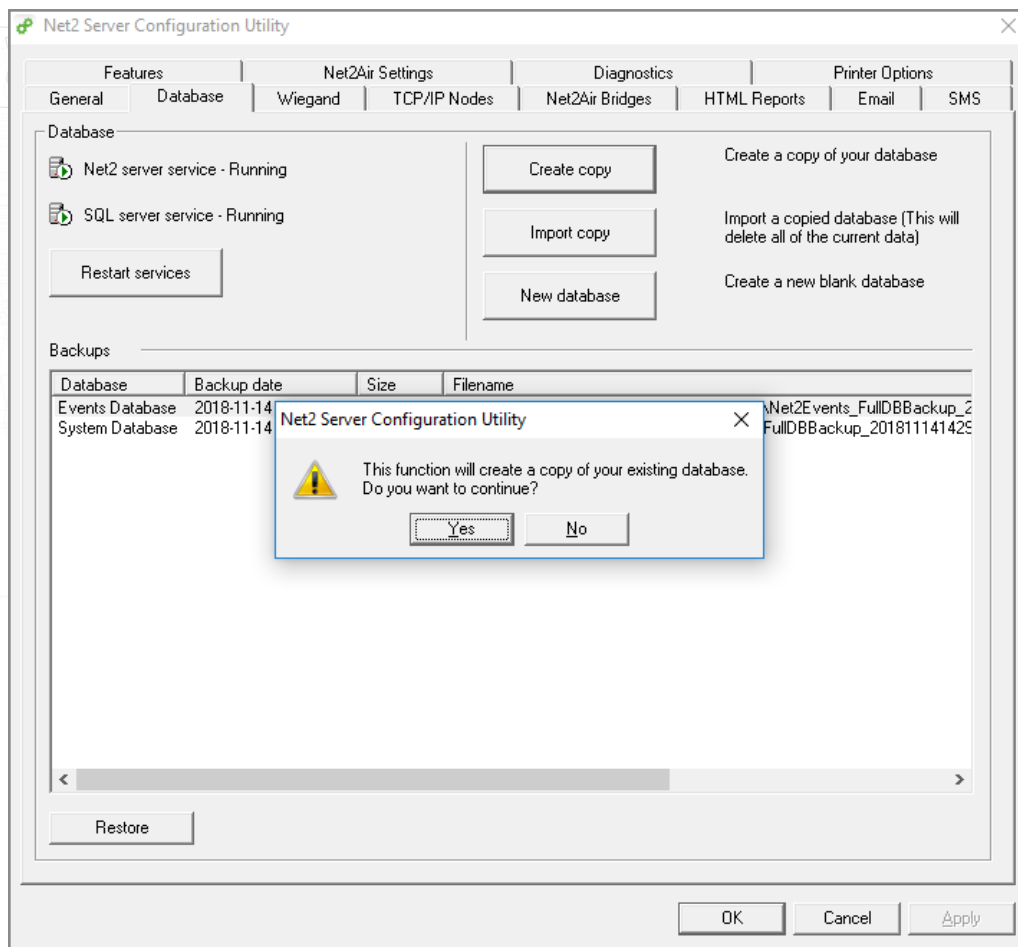
Backups

Database	Backup date	Size	Filename
Events Database	2018-11-14 14:29:43	3.01 MB	C:\Net2 Access Control\Backup\Net2Events\Net2Events_FullDBBackup_2
System Database	2018-11-14 14:29:42	10.5 MB	C:\Net2 Access Control\Backup\Net2\Net2_FullDBBackup_201811141429

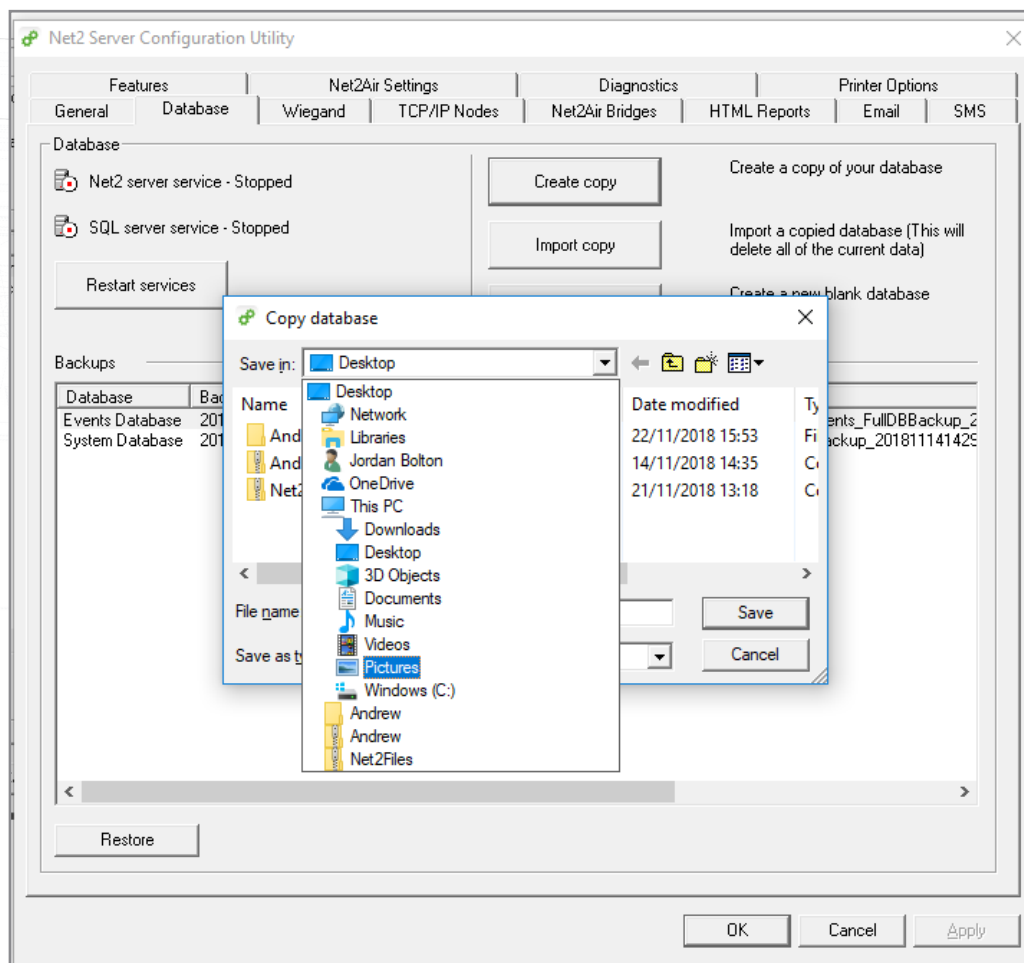
Restore

OK Cancel Apply

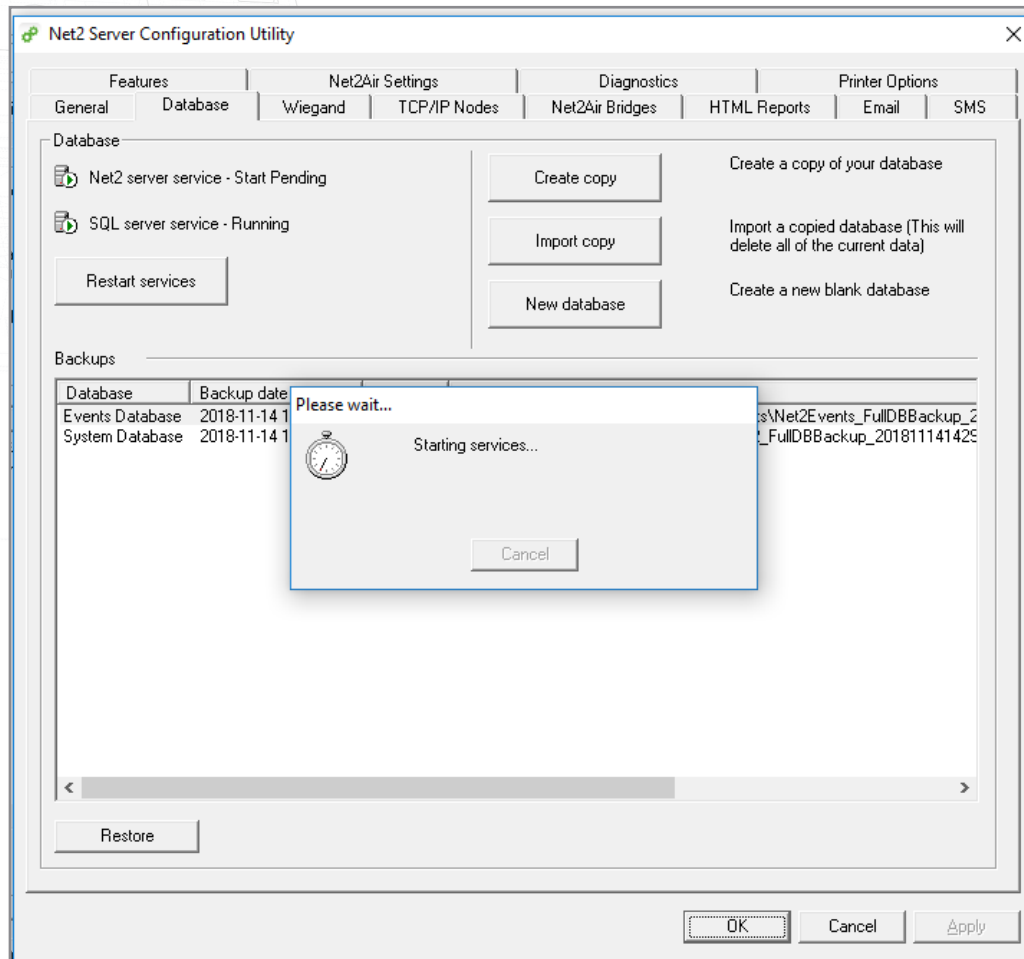
Click create copy. Then click yes in the pop-up window.



Select Your desired save location and click save.



The software will now restart services.



The backup will now be saved in your chosen location.