

Using Custom Reports in Net2

Overview

Reports in Net2 gathers data from the Net2 database and presents it to you in a logical manner. Custom reports allow you to identify information held on users, doors and access permissions with the assistance of a report wizard. The following application note provides guidance for using the wizard and explains how each section can be used.

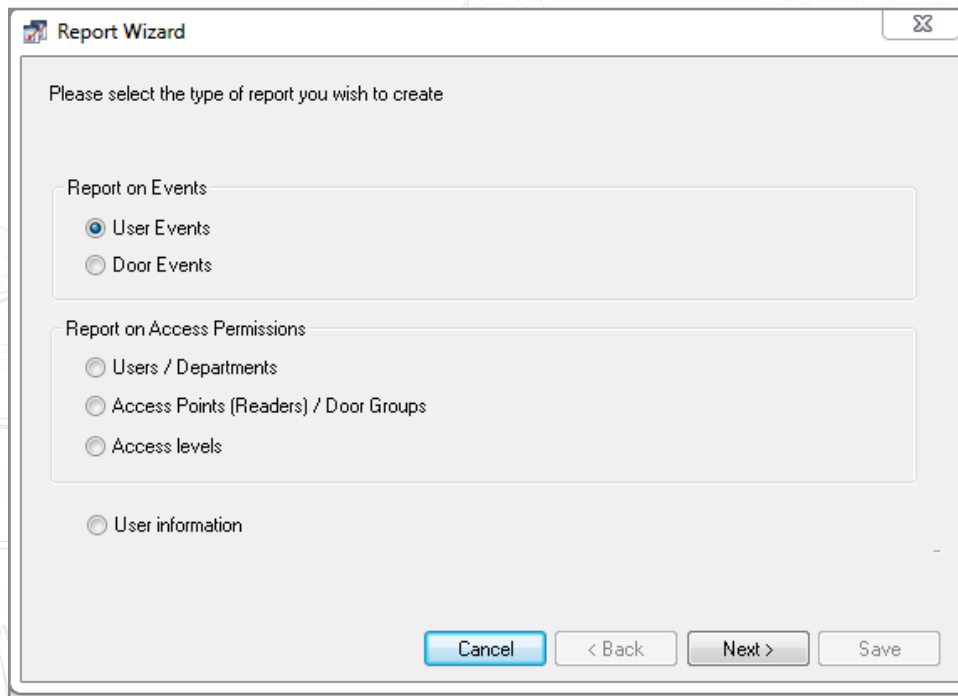


Using custom reports in Net2

The reporting wizard for Net2 was updated at v5.04 to provide better reporting of the Net2 system contents.

The reports wizard now allows you to report on Events, Access Permissions and User Information.

When opening the reports wizard, you are presented with the following:



Report on Events

Allows you to select the type of event you wish to report on:

User Events:

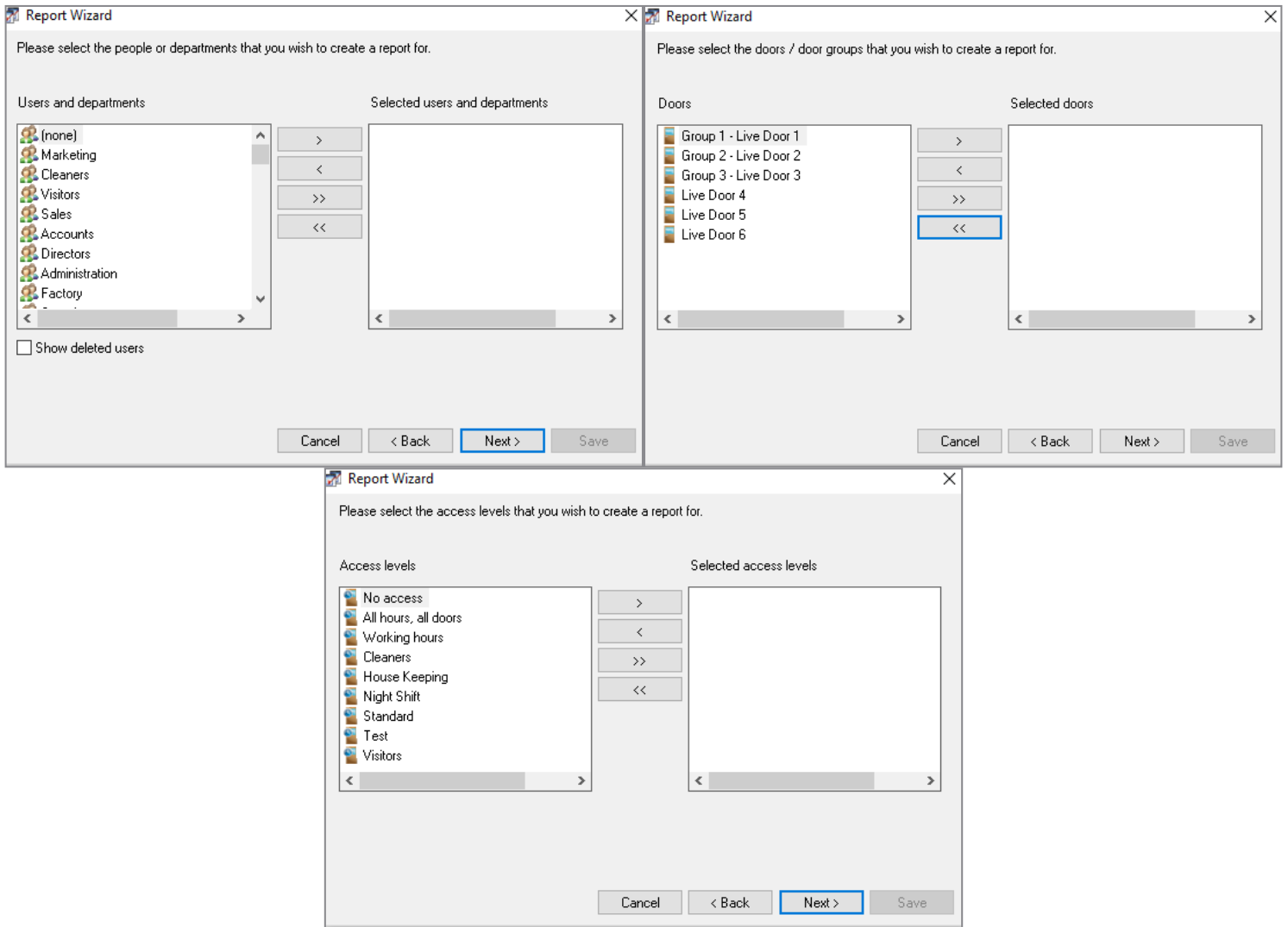
Door Events:

Clicking next will allow you to choose the people and/or doors for the report.

Both Standard and Custom date ranges are available as the last step.

Report on Access Permissions

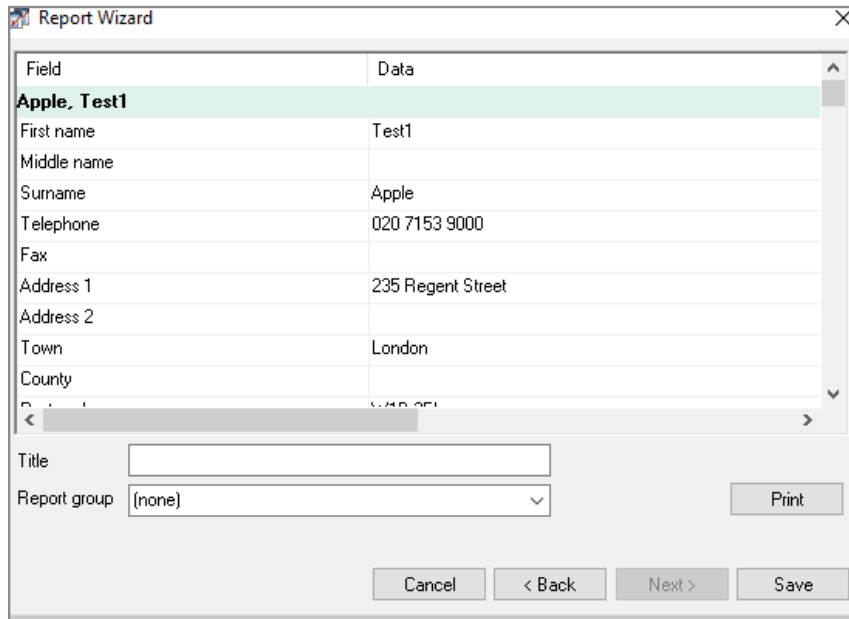
Allows you to see the access permissions according to User & Departments, Access Points (Readers) and Door Groups and Access Levels.



Both Standard and Custom date ranges are available as the last step.

User Information – generates a report on the data held within a user record. Can be run on individual users (1 or many) and/or departments (one or many).

Data held within each record is displayed within a table.



Once complete, the reports can be saved for later reference, printed or exported to PDF or CSV file formats.

