



## Paxton10 Video Management

### Overview

Paxton10 provides feature rich video management at its core, allowing the viewing and recording of up to 1000 cameras at 4K resolution, with inbuilt smart recording on motion to save storage space, and a number of useful playback features for viewing and locating past events.

The combination of Video and Access adds further practicality from its ability to associate people and events to video footage, bringing context to video and ensuring the security of your site.

### Viewing video

Video can be accessed from most areas of the software, providing the video footage for the camera or event you're interested in right when you need it.

### Video report

Video reports are at the centre of Paxton10's video management. Video reports provide viewing of up to 20 cameras, with complete playback control, timeline scrubbing, video search functionality, video bookmarks, and much more. Video reports are ideal for live monitoring of cameras, or for browsing and managing archived video.

For information on creating a video report, see AN0018-AE How to add a video report < [www.paxton.info/6116](http://www.paxton.info/6116) >

### Events

Events record everything that happens in Paxton10 and around your site; whenever someone presents their token at a door, changes the office temperature, or logs into the software, an event is generated to record the activity.

When an event has video footage associated with it, a green 'Play' button will be available. Clicking this 'Play' icon will display the video footage of the event.

To associate a device with a camera, view the device's configuration.

### Site plan

Site plans are graphical representations of your building or site. Devices, including cameras, can be added to a site plan.

On a site plan, right click on any device and select 'View video' to instantly view the live video from all cameras associated with that device, or click on a camera on a site plan to instantly view that camera's live video.

For information on creating a site plan, see AN0016-AE How to add a site plan < [www.paxton.info/6118](http://www.paxton.info/6118) >

## Dashboard

Dashboards provide customised displays aimed to meet the requirements of the user. A dashboard can contain video, events, alarm monitoring and more.

A dashboard can contain up to 16 cameras, arranged and sized according to the user. A unique feature of dashboards is for video to be viewed alongside other access control and management features.

For information on creating a dashboard, see AN0044-AE Paxton10 Dashboards.< [www.paxton.info/6120](http://www.paxton.info/6120) >

## Person or Device

Associating a camera to a Paxton10 device provides video footage to all events that occur at that device. This means that when a person goes through a door, or a gate is forced open, video footage of the event is only a few clicks away.

While in the 'People' section of the software, right click on a person and select 'View video'. Paxton10 will create a video report filtered to that person and will auto-play the video footage recorded of them.

While in the 'Devices' section of the software, right click on a device and select 'View video'. Paxton10 will create a video report filtered to that device and will auto-play all events recorded at that device.

To associate a device with a camera, view the device's configuration.

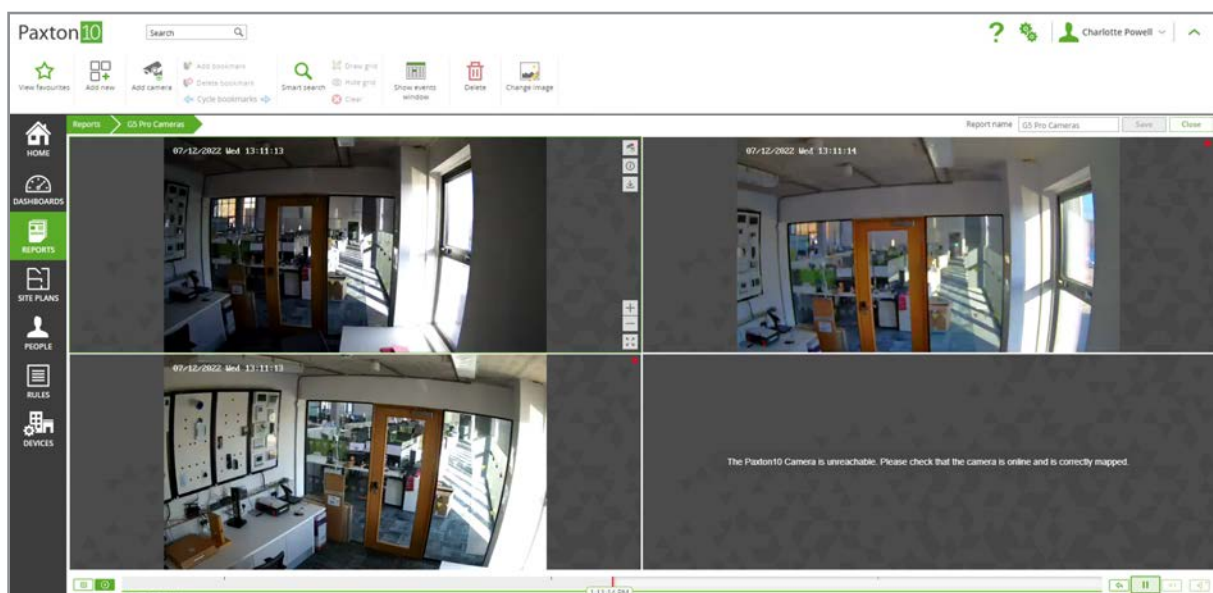
## Video features

### Timeline and scrubbing

The timeline is used to access recorded video footage. Click on the timeline to play the video recorded at that time, or drag the timeline to navigate ('scrub') the video playback.

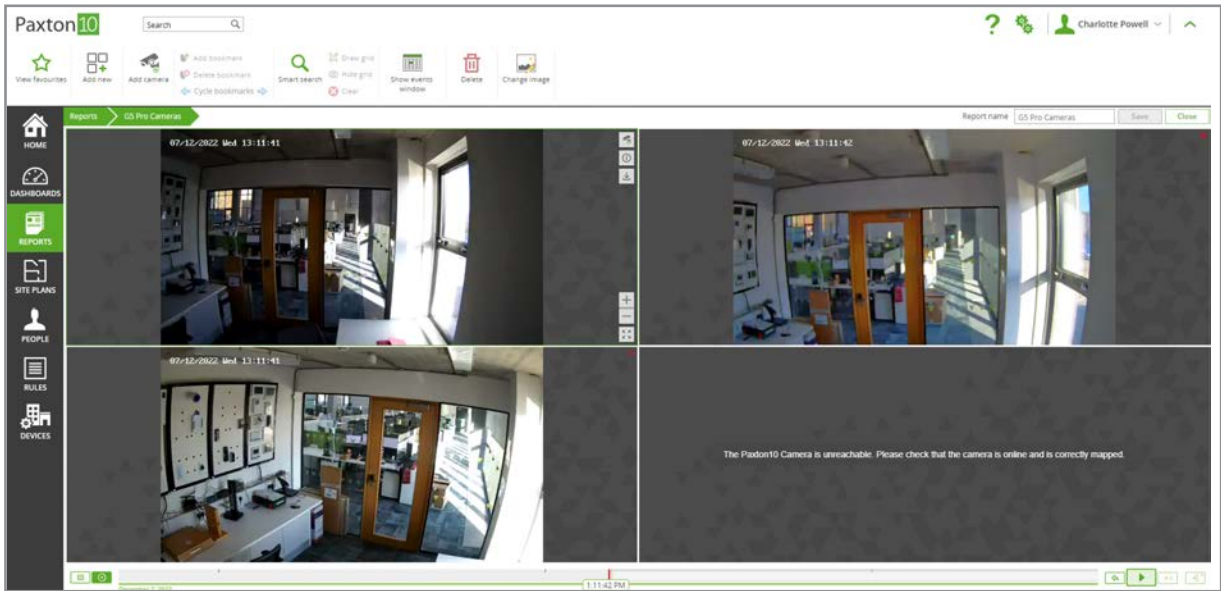
Cameras only ever record when motion is detected – the timeline highlights where video is available.

Use the mouse wheel, or pinch on a touchscreen, to zoom in and out of the timeline. Hourly markers are overlaid onto the timeline for reference. Use the date picker (to the left of the timeline) to view video from a different date.



### Playback controls

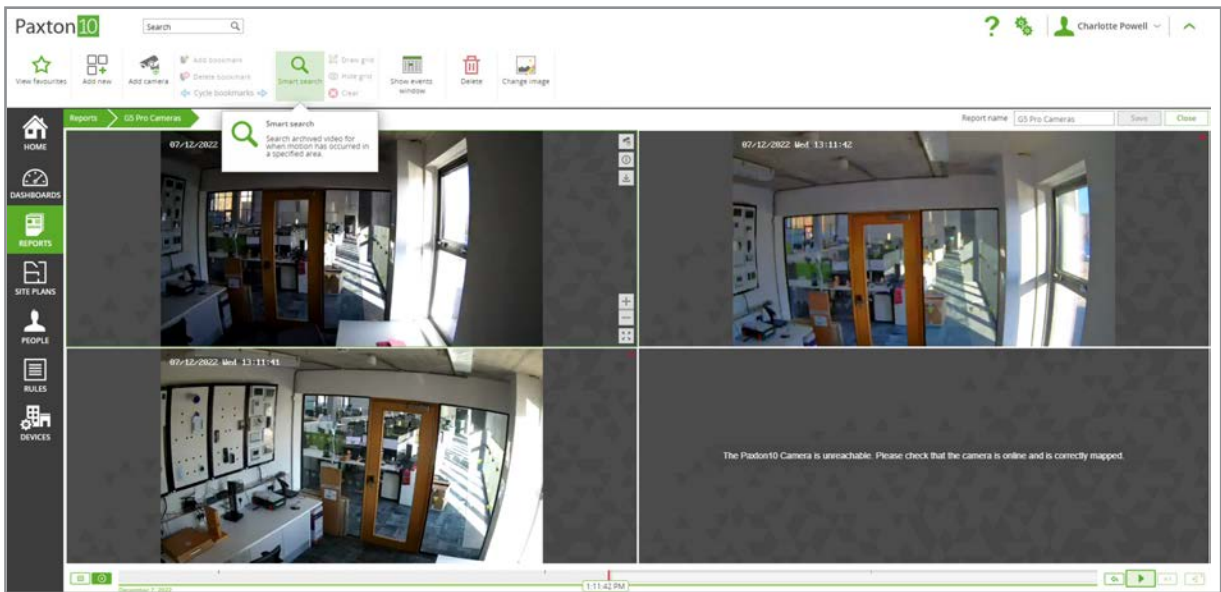
The playback controls provide quick shortcuts to jump back 15 seconds, pause playback, change the playback speed, and jump forward to live. The playback controls apply to all video streams currently being viewed, ensuring that playback remains in sync across all cameras.

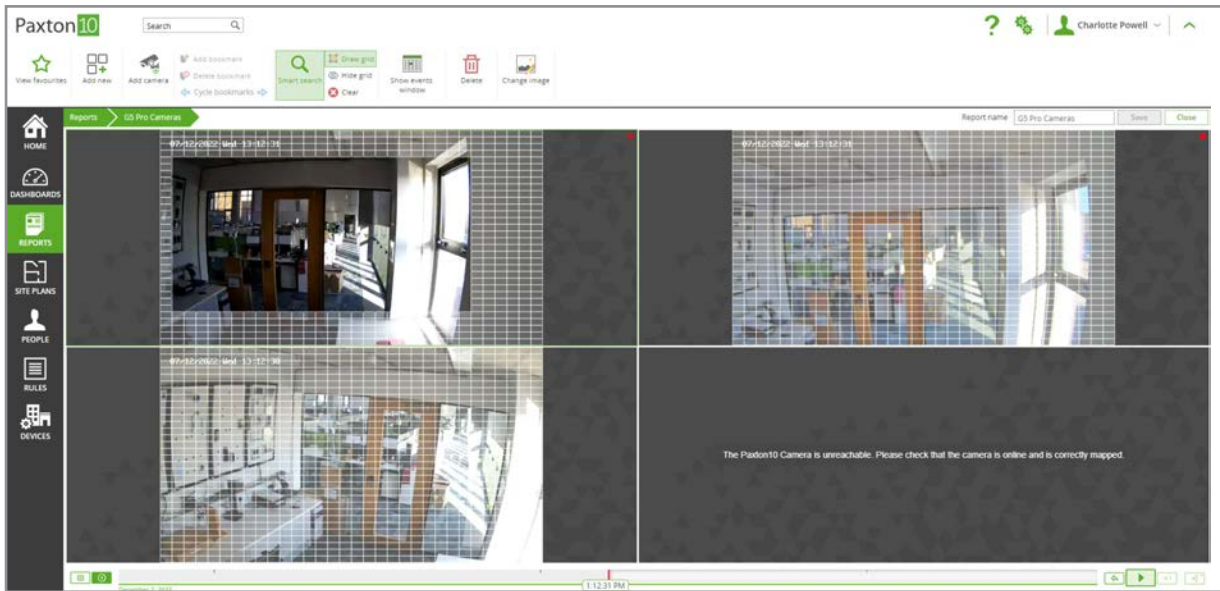


## Smart search

Smart Search makes it easy to find a specific activity or event that occurred in view of your cameras. By searching for motion in a particular area on the video it is possible to locate the moment that an item was stolen, or an item was interacted with.

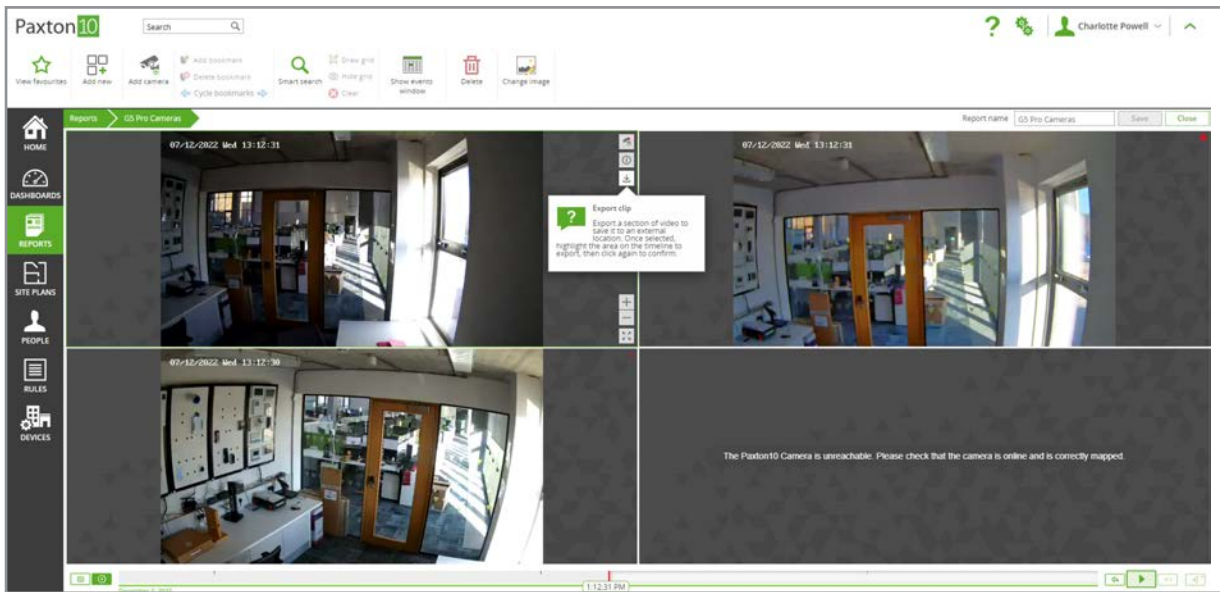
While in a video report, select 'Smart search' from the ribbon. Highlight the areas on the video that you're interested in or where the event occurred. The video timeline will filter to show where motion occurred within the highlighted areas.





## Export clip

To download a video clip to your computer, open a video report and navigate to the video you wish to export, then select the video slot containing the camera you wish to export - the camera controls should be displayed down the side. From the camera controls, select the 'Export clip' control.



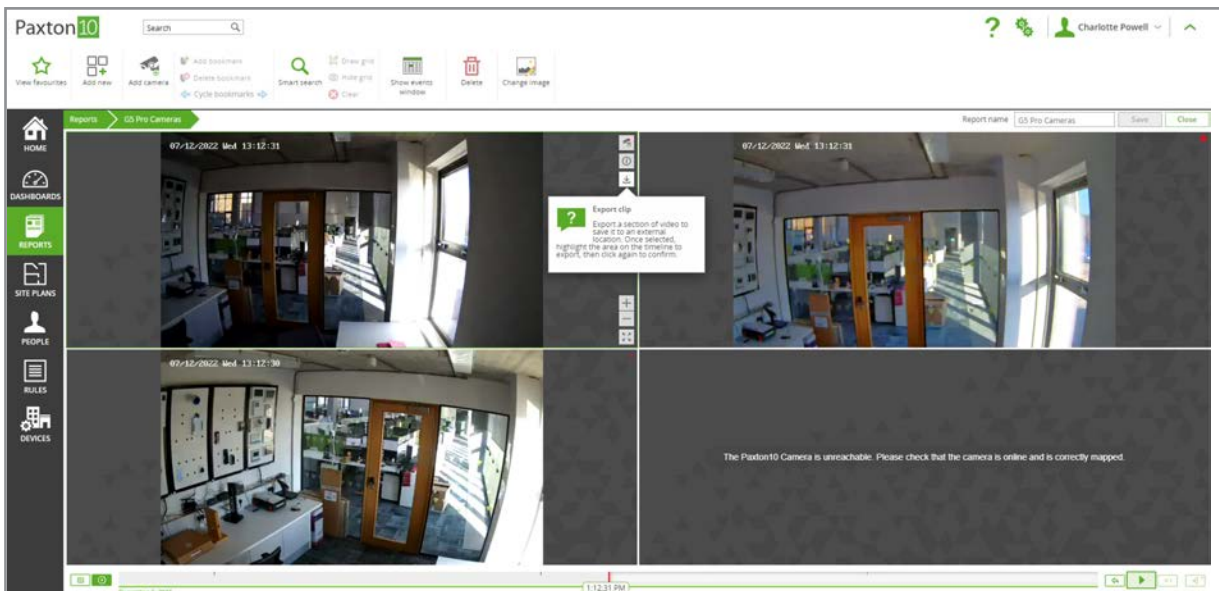
Using the timeline, drag the selection panel to cover the period of video to download, then confirm once you're happy. You will be prompted to confirm the export and give the exported file a name, before the file is downloaded to your default download location.

## Snapshot

Snapshot is a way of capturing a high-resolution image from the video. Use snapshot to capture important moments at their critical point, or to get the best possible image of a person or number plate for recognition and identification.

To download a snapshot, open a video report and navigate to the point in time that you want a snapshot from, then select the video slot containing the camera you wish to use for the snapshot - the camera controls should be displayed down the side. From the camera controls, select the 'Snapshot' control.

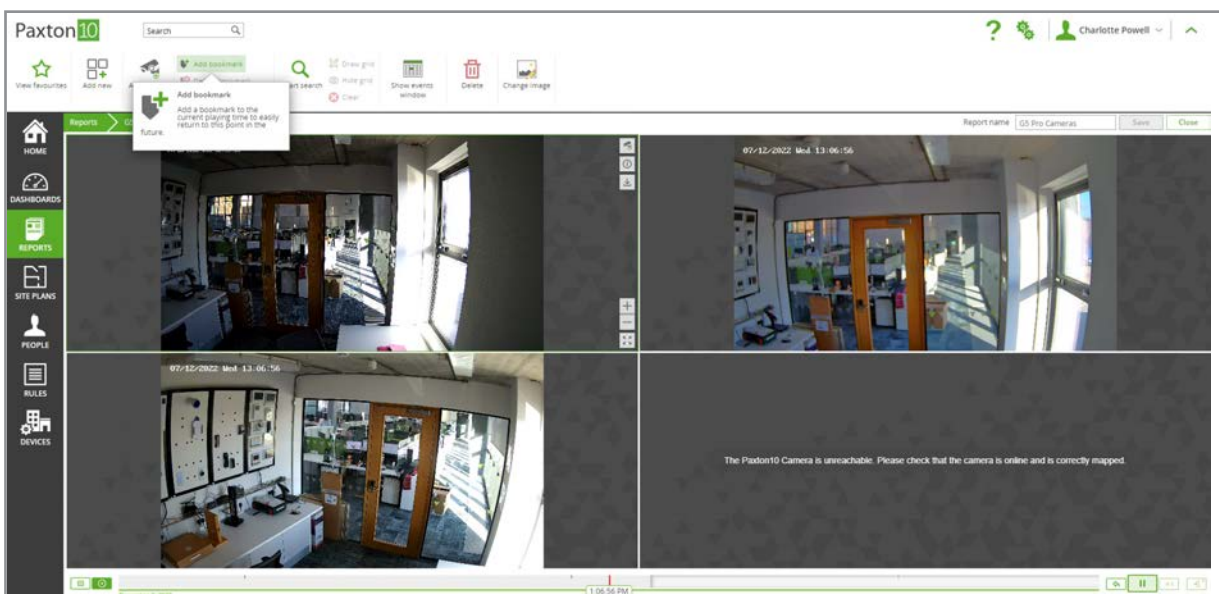
Browse the available key-frames and download those that provide the best image for your use.



## Bookmarks

Like bookmarks in a book or webpage, a video bookmark in Paxton10 allows users to easily locate a moment in time or event that occurred.

While viewing video, to bookmark the current playing time, select 'Add bookmark' from the ribbon. The bookmark will be added to the video timeline – give it a name or description, then click 'Add'.



Bookmarks are saved against all cameras currently in view and can be seen by all users that have software access to the video.

Whenever viewing video, use the timeline, or 'Cycle bookmarks' control in the ribbon, to locate the bookmark for the cameras being viewed.

## Full screen

While viewing multiple videos in a report or dashboard, it may be desired to view a single camera in more detail.

- Double click on the desired video to open the video as a pop-up
- Select the desired video, then click the 'Full screen' button in the bottom right of the video to view the camera in full screen

When displaying a single camera as a pop-up or full screen, the camera's high-resolution stream will be displayed.

## Digital zoom

Digital zoom makes it possible to zoom in and out of live and recorded video footage from any camera.

While viewing video, use the on screen +/-, the mouse wheel, or pinch, to zoom in and out on the video.

While zooming in on a video, Paxton10 will request the camera's high-resolution video stream for optimum image quality.

## Events window

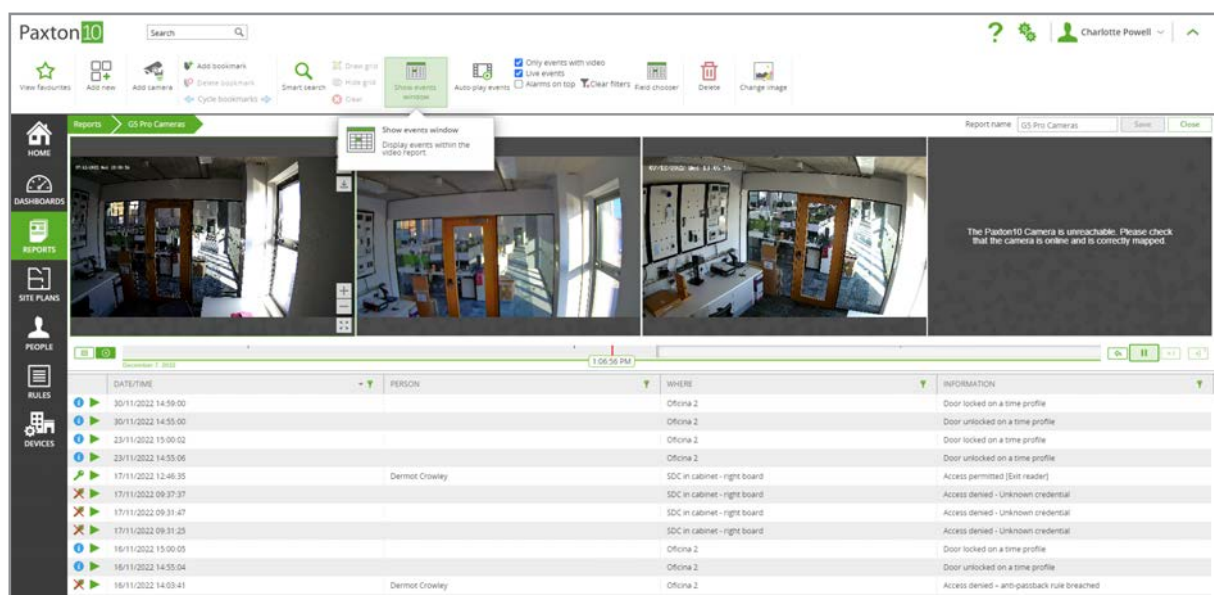
The events window helps to combine video with Paxton10 events, giving view of the activity happening around your building while not distracting you from video surveillance.

While viewing a video report, select '**Show events window**' from the ribbon.

By default, the events displayed will be for the devices associated with the cameras in the report – click the green filter icons in the event columns to edit which events are shown.

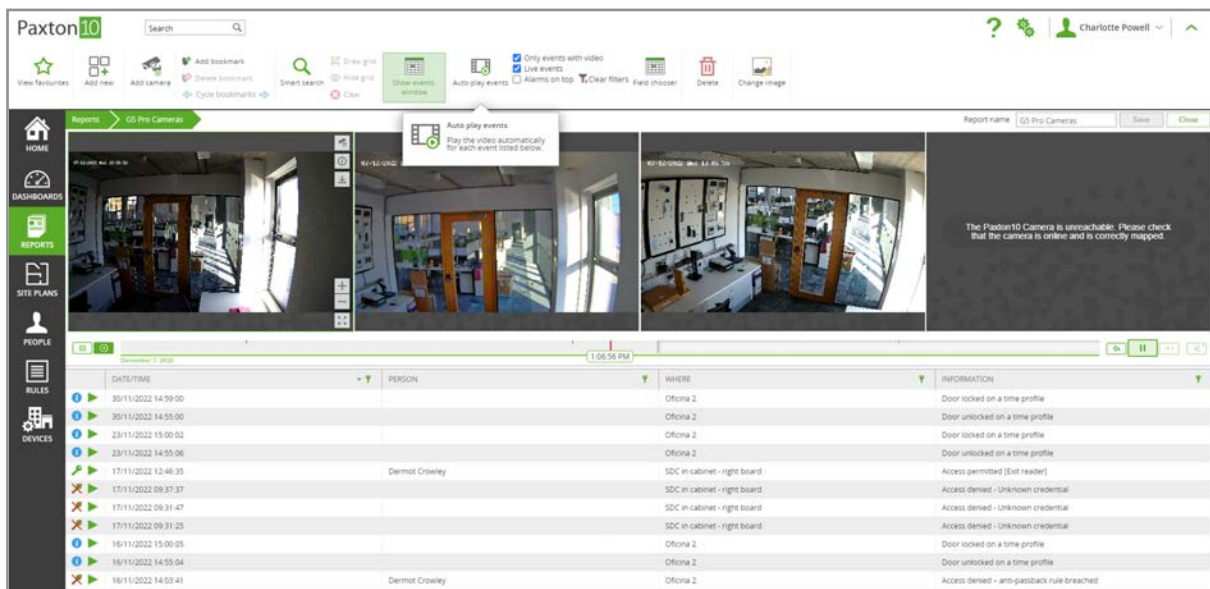
## Events with video

While the events window is displayed, events that have video associated with them will display a green play icon. Click on the play icon next to an event to see the video footage of that event within the report.



Where there are multiple events with video, Paxton10 can play a continuous feed. This is a useful way of only viewing video when something happens, saving time. By filtering the events this can also be used to monitor a person's activities throughout a day, and much more.

While in a video report with the events window displayed, click '**Auto-play events**' from the ribbon. The video from the most recent event with video will be displayed. Once the video footage has ended, Paxton10 will display the video from the next available event with video.



## Video streams

Paxton10 can record up to 2 video streams for each camera; a main stream (high-resolution) and a sub stream (low-resolution), alongside an additional thumbnail preview image.

The main stream is displayed to the user when viewing a single camera's video (single camera video report, video pop-up, or full screen video). The main stream is also used when using digital zoom, exporting a clip, or downloading a snapshot.

The sub stream is displayed when a user is viewing multiple cameras or when bandwidth is limited. The sub stream is also used for video analytics, such as motion detection and Smart search.

The thumbnail images are used for video scrubbing, and may be used as video playback when there is insufficient bandwidth to view the sub stream or main stream.

## Permissions

The ability to view video in Paxton10 is permissioned by software permissions.

To add a camera to a video report, dashboard, or site plan, a user requires 'Read' permissions to the camera device.

To view the video from a camera, a user requires 'Read' permissions to the camera device, or 'Read' permissions to the video report, dashboard or site plan that contains the camera.

## Frequently Asked Questions

### How do I add a camera to Paxton10?

Any RTSP, or Paxton10 camera can be viewed by Paxton10.

For how to add a third-party camera (RTSP), see AN0034-AE - How to add a third-party camera to Paxton10 < [www.paxton.info/6112](http://www.paxton.info/6112) >

For how to add a Paxton10 camera, see AN0046-AE – How to add a Paxton10 camera < [www.paxton.info/6114](http://www.paxton.info/6114) >

### Who can view the video from a camera?

The ability to view video in Paxton10 is permissioned by software permissions.

To add a camera to a video report, dashboard, or site plan, a user requires 'Read' permissions to the camera device.

To view the video from a camera, a user requires 'Read' permissions to the camera device, or 'Read' permissions to the video report, dashboard or site plan that contains the camera.

### **How do I view video relating to a specific event?**

When you associate a camera with a device, events at that device are given the video footage from the camera. Any event that has video footage associated with it will contain a green play icon next to the event icon. Clicking the green play icon in an event will display the video for that event.

For example, if a camera is associated with a door, when a user enters the door, an event with video is generated; clicking the green play icon on the event will display the video footage of that user entering.

### **Why are there gaps in the timeline / video footage missing?**

Paxton10 is efficient and only ever records when there is motion, this means more of what you need is recorded and can be stored for longer. Raise the motion detection sensitivity to start recording with less motion, or lower it to avoid false recording.

### **What is the maximum supported resolution?**

Paxton10 can record up to 4K resolution (4096 x 2160 pixels).

### **The Export clip button has disappeared / doesn't exist, where is it?**

Export clip is not available when viewing your system remotely and therefore is only available when logged in with the Local URL.

### **I have exported a clip, where is it?**

Exported clips and snapshots will save to your default save location used by your browser.

- Windows XP: \Documents and Settings\\My Documents\Downloads
- Windows Vista, Windows 7, Windows 8 & Windows 10: \Users\\Downloads
- Mac: /Users/<username>/Downloads

### **I have exported a clip, how do I play it?**

The Export clip feature downloads as MP4 format. Any media player that supports this extension can be used to play the clip, however VLC player is advised.

VLC player can be downloaded for free at [www.videolan.org/vlc](http://www.videolan.org/vlc)

Once installed, right click on the downloaded video file, select Open with, and then select your chosen video player from the displayed options – ask your system administrator if in doubt.

### **Why is my video quality poor?**

Paxton10 can record up to 2 video streams for each camera; a main stream (high-resolution) and a sub stream (low-resolution), alongside an additional thumbnail preview image.

Where bandwidth allows and only one camera is being viewed, Paxton10 will provide the main stream to the user. However, if multiple cameras are being viewed, or bandwidth is limited, Paxton10 will use the sub stream or thumbnail.

When the sub stream or thumbnails are used, double click on a camera or go full screen for the camera to view the main high-resolution stream.