

## How to add a fire alarm to Paxton10

### Overview

With Paxton10, it is easy to monitor the state of fire alarms. A dedicated alarm connector can be installed and neatly fitted into the housing of your fire alarm.

Connecting a fire alarm to a Paxton10 system allows the system to know the alarm state, allowing you to ensure the correct doors are unlocked and the correct actions are triggered.

### Creating the fire alarm device

Fire alarms can be managed within the Devices section in Paxton10.

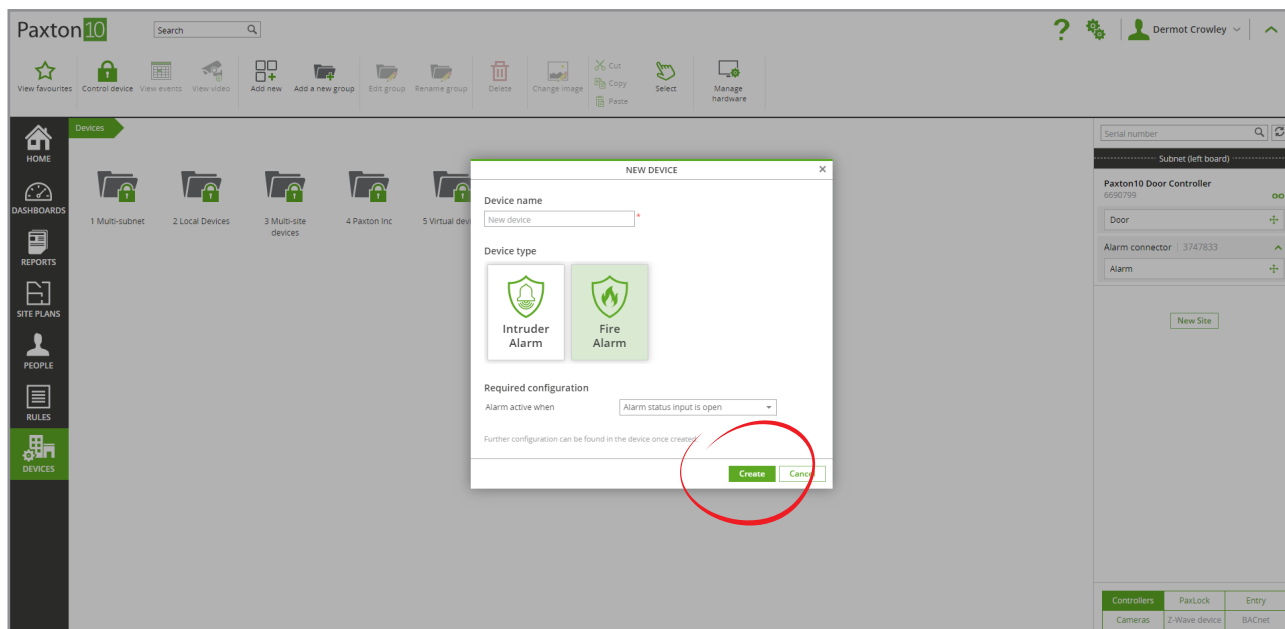
There are 2 methods for creating a fire alarm in Paxton10:

#### Method 1 – Drag and drop

Before proceeding, ensure the Paxton10 hardware you're using to interface with the Intruder alarm is connected to the network.

While in the '**Devices**' section:

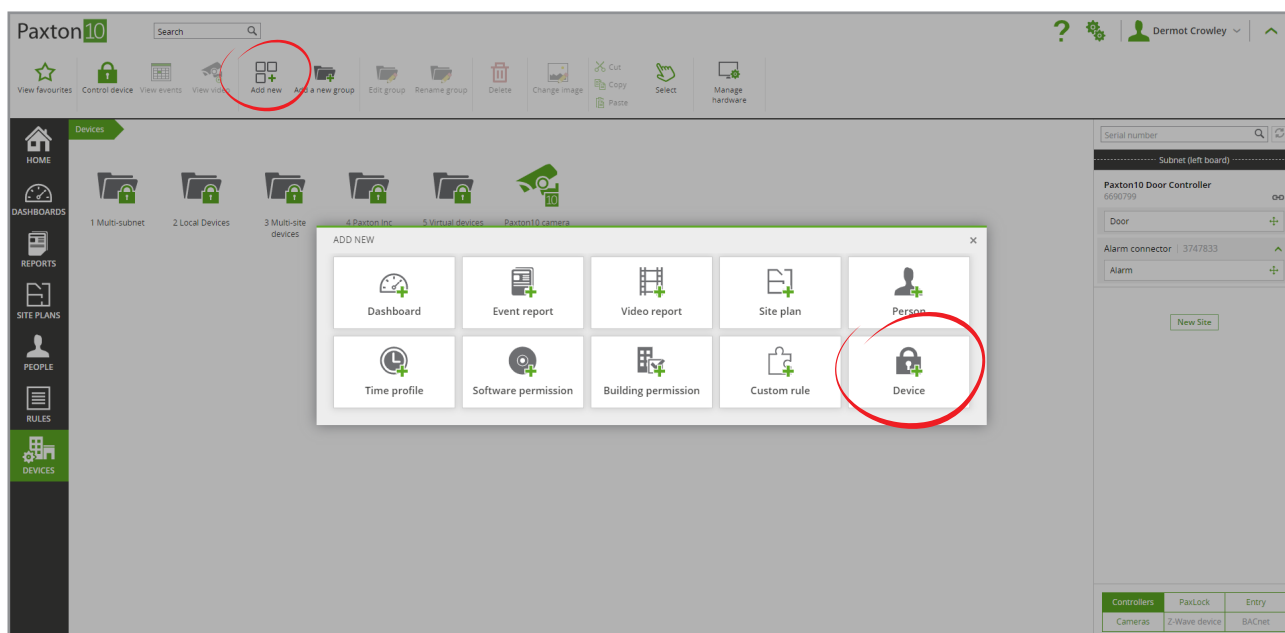
1. In the software, on the right-hand side of the screen, locate the hardware which is to interface with the fire alarm (this could be an Input from an I/O connector, or an '**Alarm**' component of an Alarm connector)
2. Click and drag the component (Input or Alarm) onto an empty space on the left-hand side
3. Select '**Fire alarm**' as the Device type, and enter a name for it
4. Click '**Create**' to finish creating the device



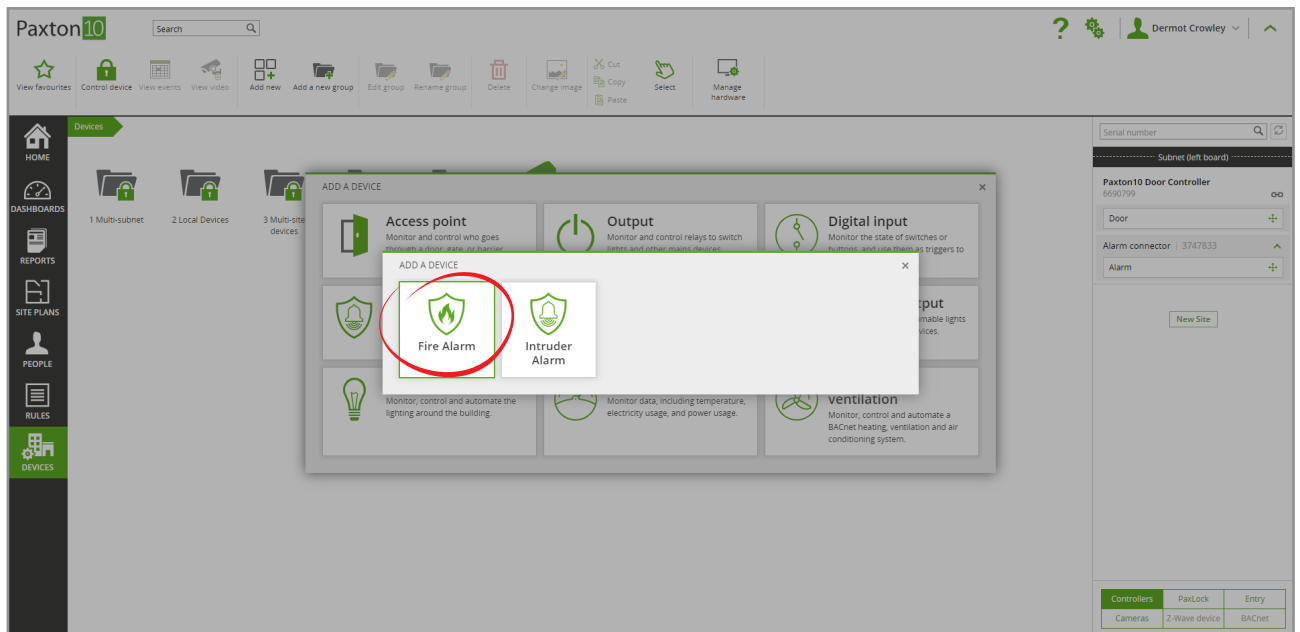
## Method 2 – Add a device

While in the 'Devices' section:

1. Click 'Add a device'



2. Select 'Alarm', and then click on 'Fire Alarm'

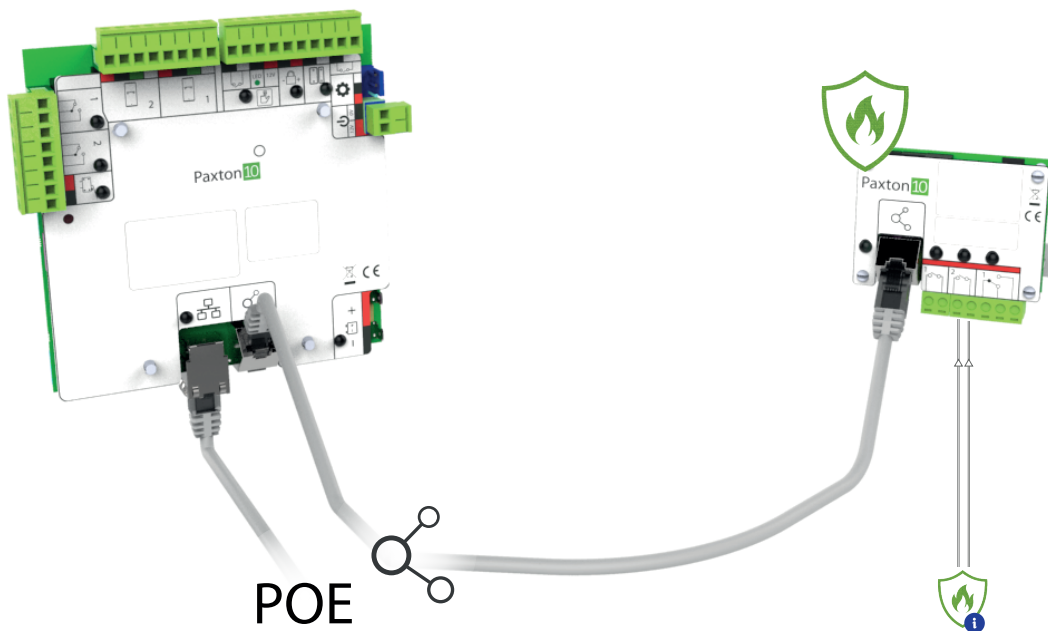


1. Give the fire alarm a name, and configure it as required
2. Click 'Save'

To map the fire alarm hardware to the Paxton10 fire alarm device, return to the 'Devices' screen and locate the hardware on the right-hand side, then drag its components (Input or Alarm) onto your newly created fire alarm device.

## Connecting the fire alarm to the alarm interface

Fire alarms connect to a Paxton10 system interface with just a single connection to monitor when the alarm is active.



## Configuring the fire alarm

Configure how the fire alarm operates, the doors that should unlock when the alarm is active, and whether any cameras should be associated with it.

In the Configuration tab, there are 3 sections:

### Alarm

Select if the Alarm input is open or closed when the alarm is active.

### Doors

These are the access points that will unlock when the alarm is active, allowing free access.

Click 'Select' to edit this list.

### Cameras

These are the cameras that are associated with the alarm. Associating cameras with fire alarms provide events with video footage.

Click '**Select**' to edit this list.

Click '**Save**' – You have now successfully created and configured the fire alarm in the Paxton10 software. The alarm is now operational.

See: AN0021-ZA – How to create a Trigger and Action rule [paxton.info/6123](http://paxton.info/6123) to learn how you could use the fire alarm in custom rules to perform automated tasks when the alarm is active or inactive.

## Frequently Asked Questions

### How easily can people escape the building in the event of a fire?

Connecting the fire alarm to Paxton10 allows the system to unlock access points in the event of a fire. This means users won't have to waste time pressing exit buttons or digging through their pockets for their token at every door, ensuring a fast and efficient evacuation. Define the access points that should unlock in the Doors section above.

### Will the fire doors still unlock if the intruder alarm is armed?

If an access point is included in the disarm doors of an intruder alarm, while the intruder alarm is armed, these doors will remain locked. To unlock the doors will require the intruder alarm to be disarmed.

### Can I have multiple fire alarms?

Yes, there is no restriction to the number of fire alarms you can have in Paxton10. Simply create multiple fire alarm devices, following the steps above.