



Paxton10 Dashboards

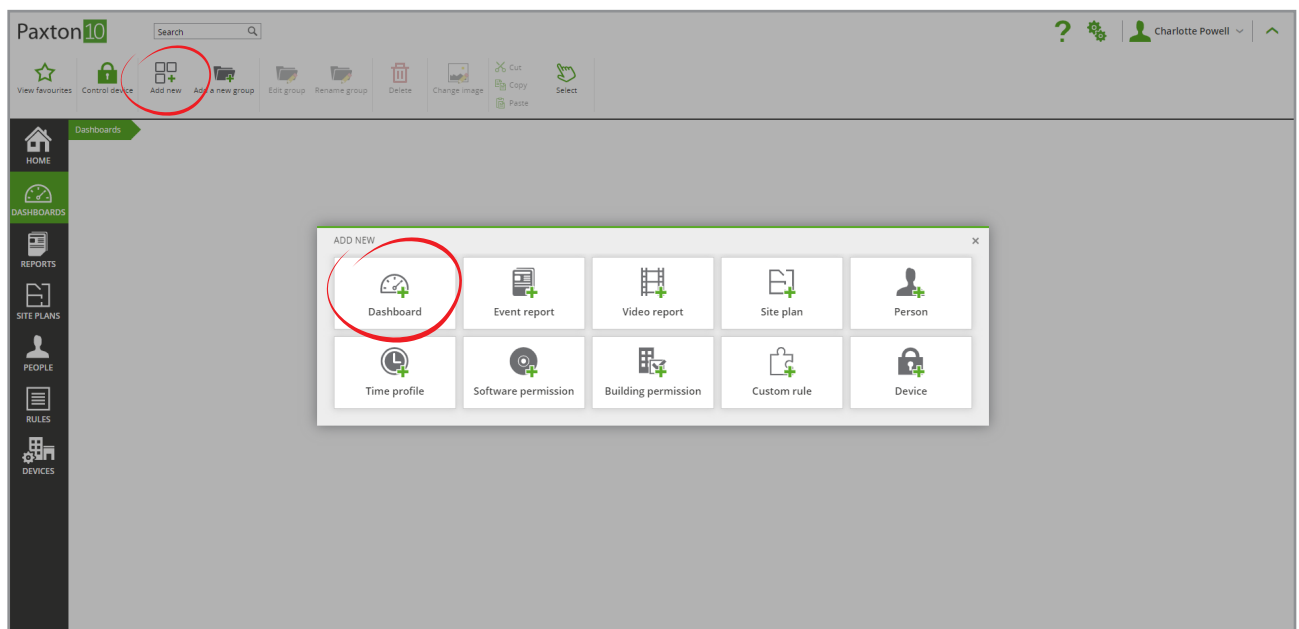
Overview

Dashboards are a way to allow the Paxton10 experience to be completely tailored to meet the needs of a specific user. Be it display of information or camera views combined with events or even specific actions via soft buttons, it is possible to create a dashboard to show the relevant controls and information.

A system can contain multiple dashboards, each aimed at a different user need or user role, and permissioned so that each user can only view the dashboards relevant to them.

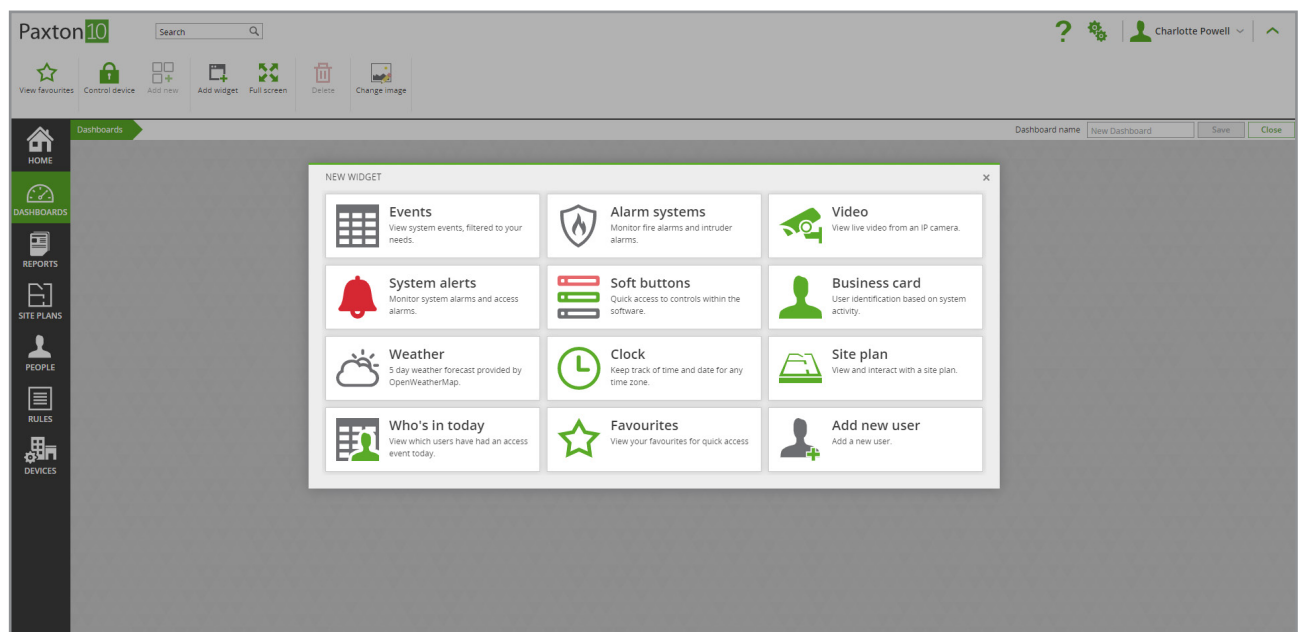
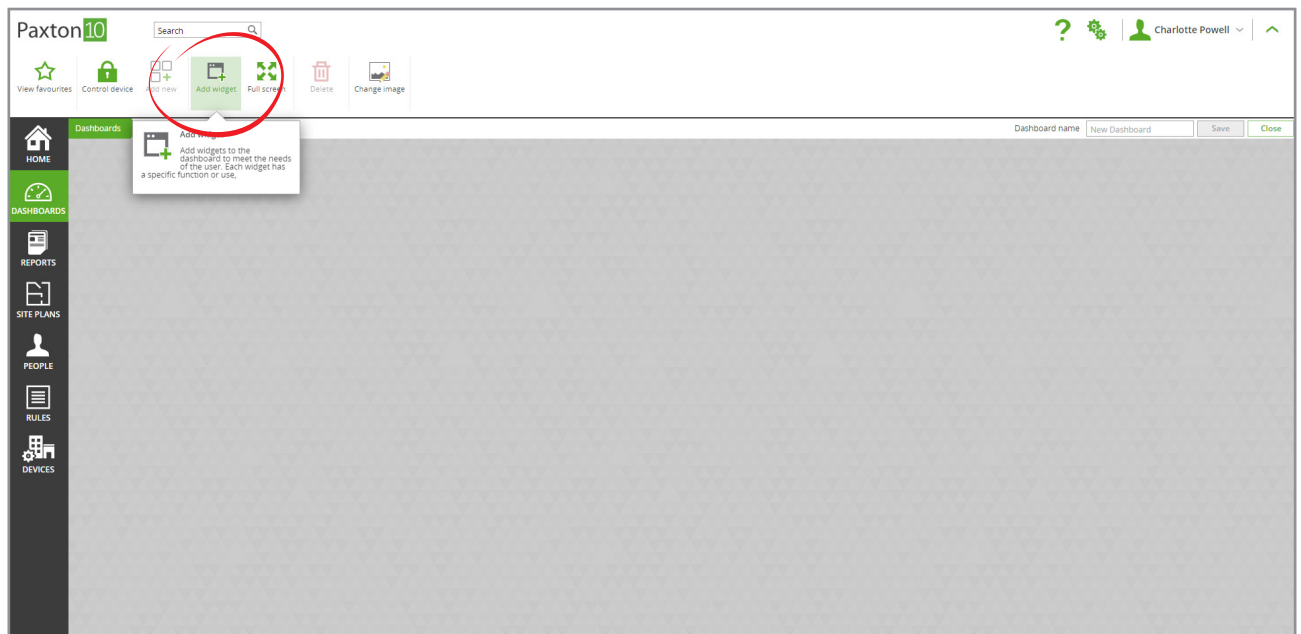
Creating a new dashboard

1. Click 'Add new' from the ribbon and select 'Dashboard'

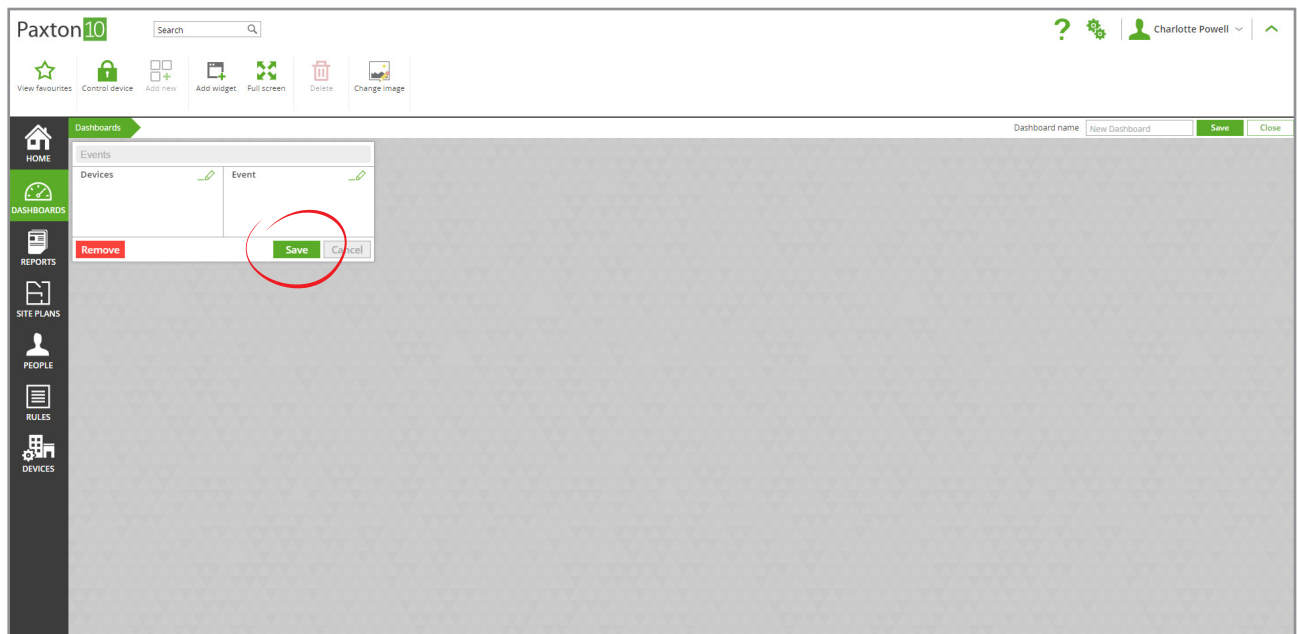


2. Select a widget to add to the dashboard

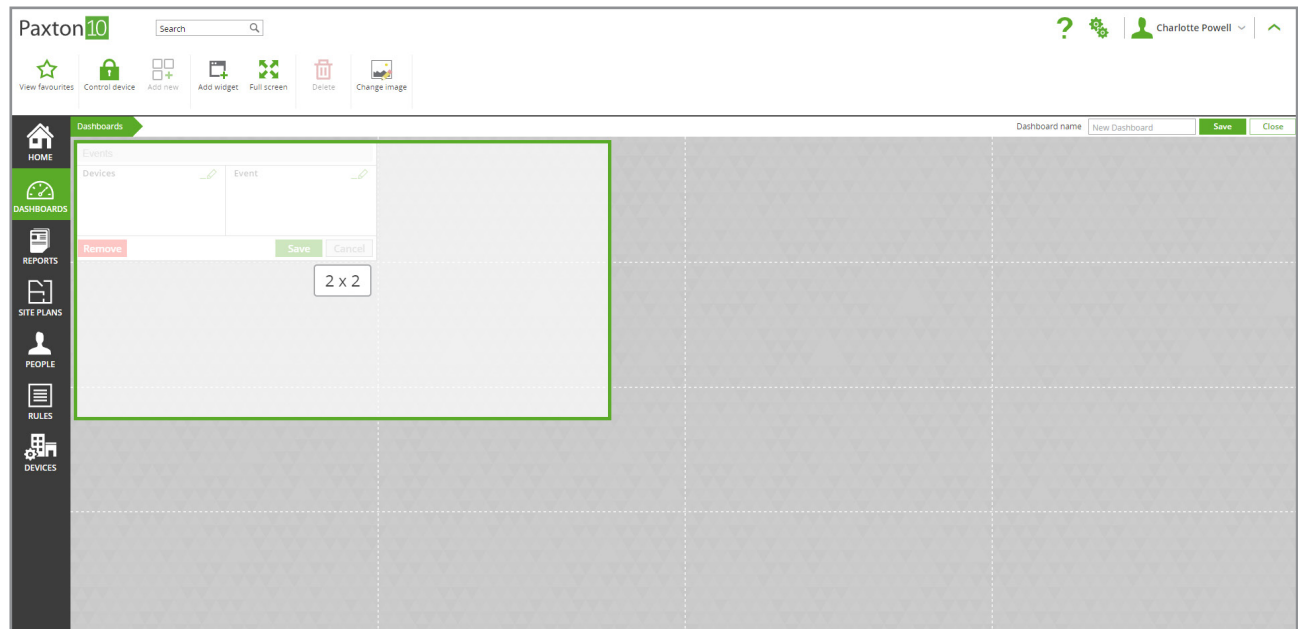
Each widget has unique functionality and can be configured to your needs



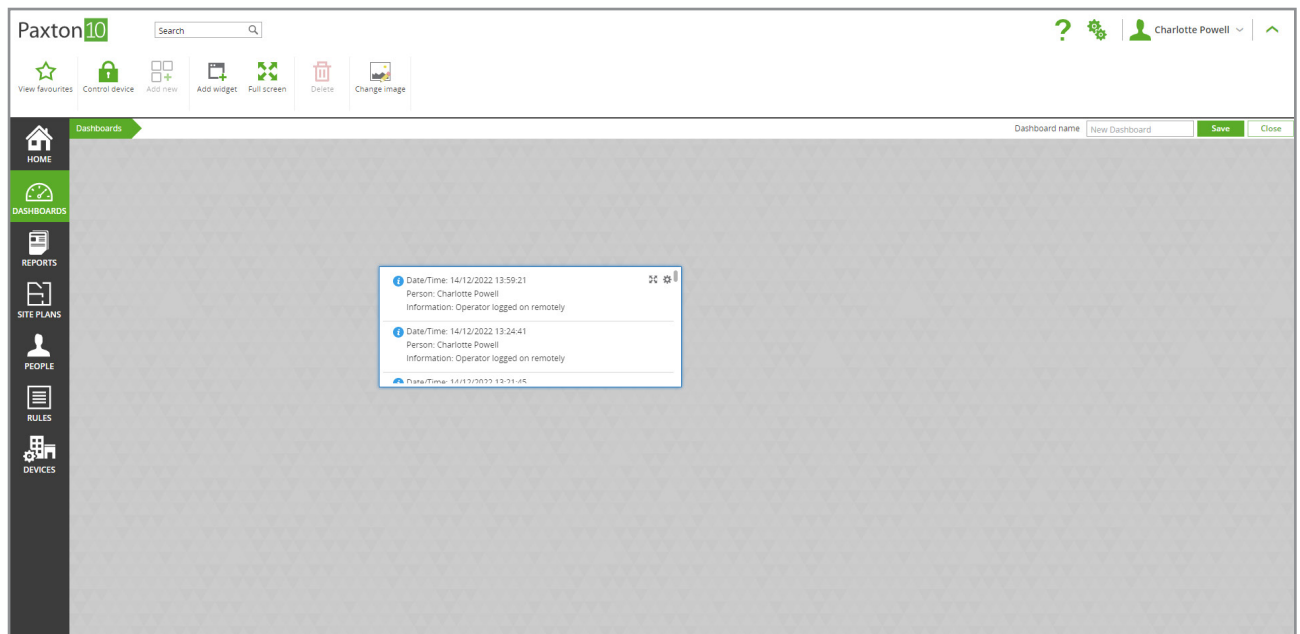
3. The widget will open in its configuration view. Configure the widget to display and operate as required, then click 'Save'



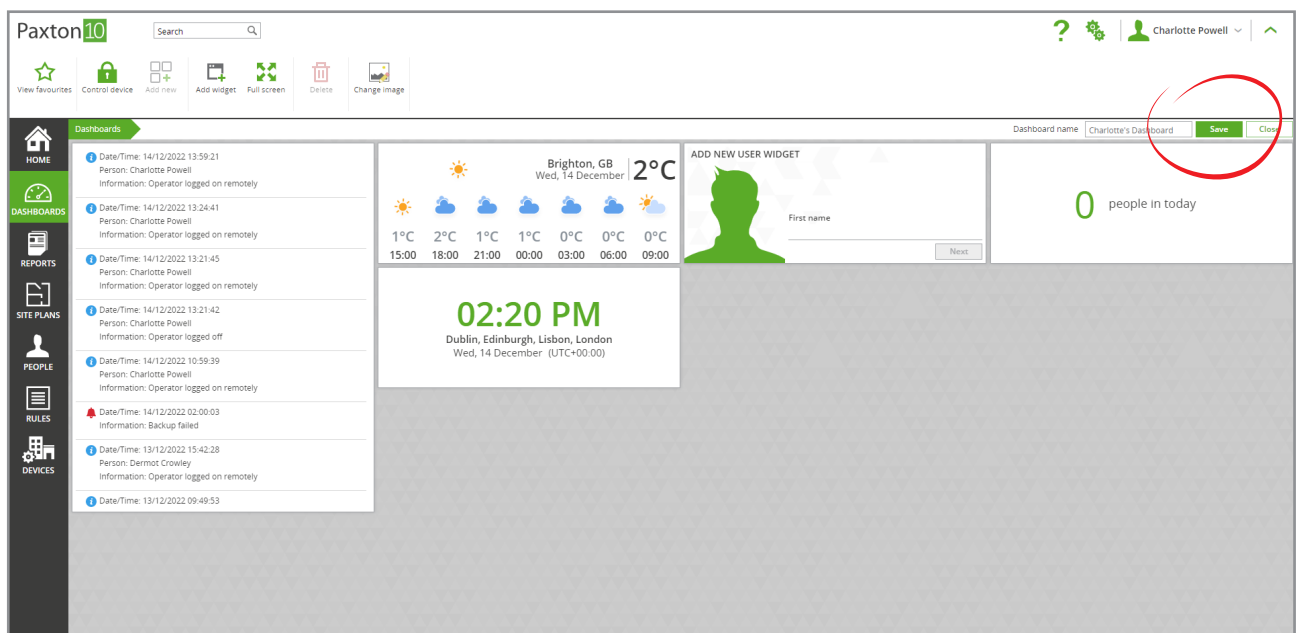
4. Resize the widget by clicking and dragging on an edge, so that it occupies the desired space in the dashboard
The widget will display appropriately for the size it is given, keep this in mind as some functionality may be hidden if the widget is given minimal space.



5. Click and drag from the top of a widget to relocate it on the dashboard



6. The widget is now setup and ready to use. Select '**Add widget**' from the ribbon to add additional widgets to this dashboard
7. Give the dashboard a name, then click '**Save**'



Include the dashboard in software permissions to allow users to view and interact with it.

Dashboard widgets

Each widget is designed to meet specific needs and user roles. Populate each dashboard with the widgets required to meet certain tasks or job roles.

For example. A 'Security dashboard' could be created containing video cameras, events and system alerts, and then software permission to the dashboard given to the security guards and managers.

Events

The Events widget displays live system activity. It can be filtered to only show events relating to specific devices, and only show events of a specific type.

In addition to the above, the events displayed will also be filtered by the viewer's software permissions.

Alarm systems

The Alarm systems widget reports the state of selected intruder alarms and fire alarms.

The viewer is required to have 'Events' software permissions for the alarm devices that the event displays.

Video

The Video widget displays live video for a selected camera.

System alerts

The System alerts widget highlights alarm events that may require attention.

The alarm events displayed will be filtered by the viewer's software permissions

Soft buttons

Soft buttons provide custom control through the Paxton10 software, using Paxton10 triggers and actions. Clicking a soft button in the widget will perform the action(s) configured within the triggers and actions rule.

Soft buttons are not permissioned, meaning if someone has access to the Dashboard, they are able to use any soft button included in the dashboard.

Business card

Identify the user responsible for the most recent event with the Business card widget. For each new event within the configured criteria, the details of the user behind the event will be listed, along with a large identifying photo.

Only user details for users that the viewer has software permissions for will be displayed.

Site plan

The Site plan widget displays a pre-created site plan. Site plans can be created in the 'Site plans' section of the software.

Once added to a dashboard, any user with permission to the dashboard will be able to view the site plan within the dashboard, however their interaction with the site plan may be restricted.

Who's in today

The 'Who's in today' widget records the users that have had a valid access event on the current day.

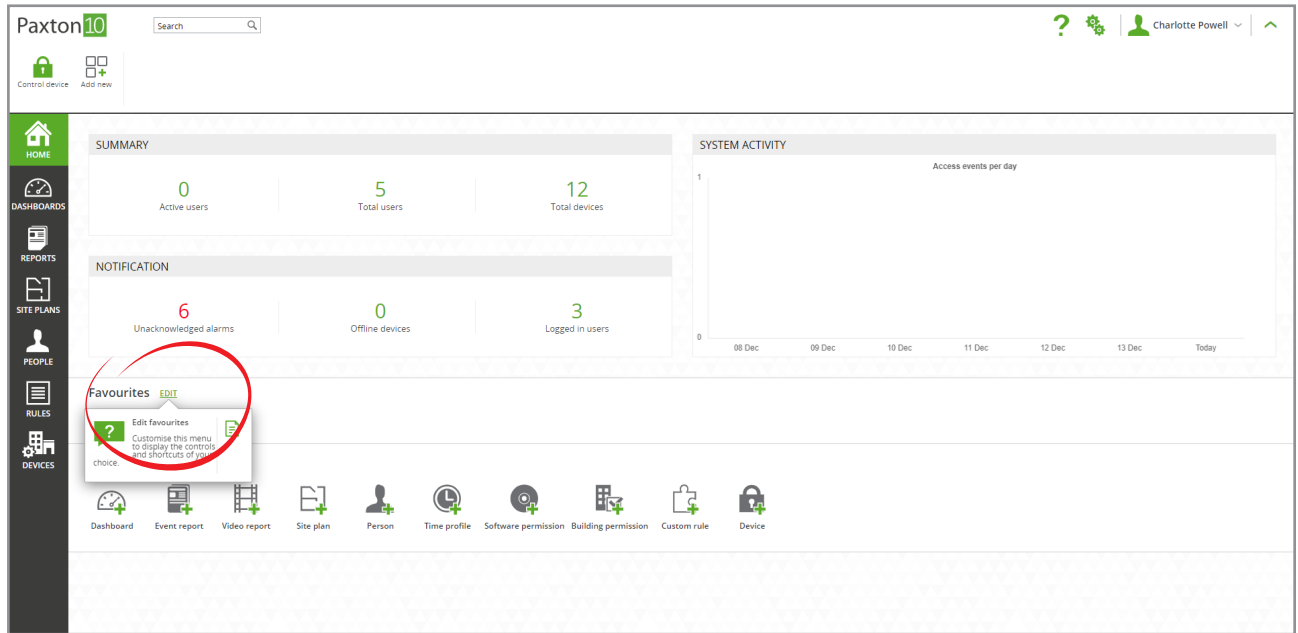
The number of users reported will be filtered by the viewer's software permissions. If the viewer does not have permission to view a user, the user will not be listed to that viewer.

Opening a dashboard on start-up

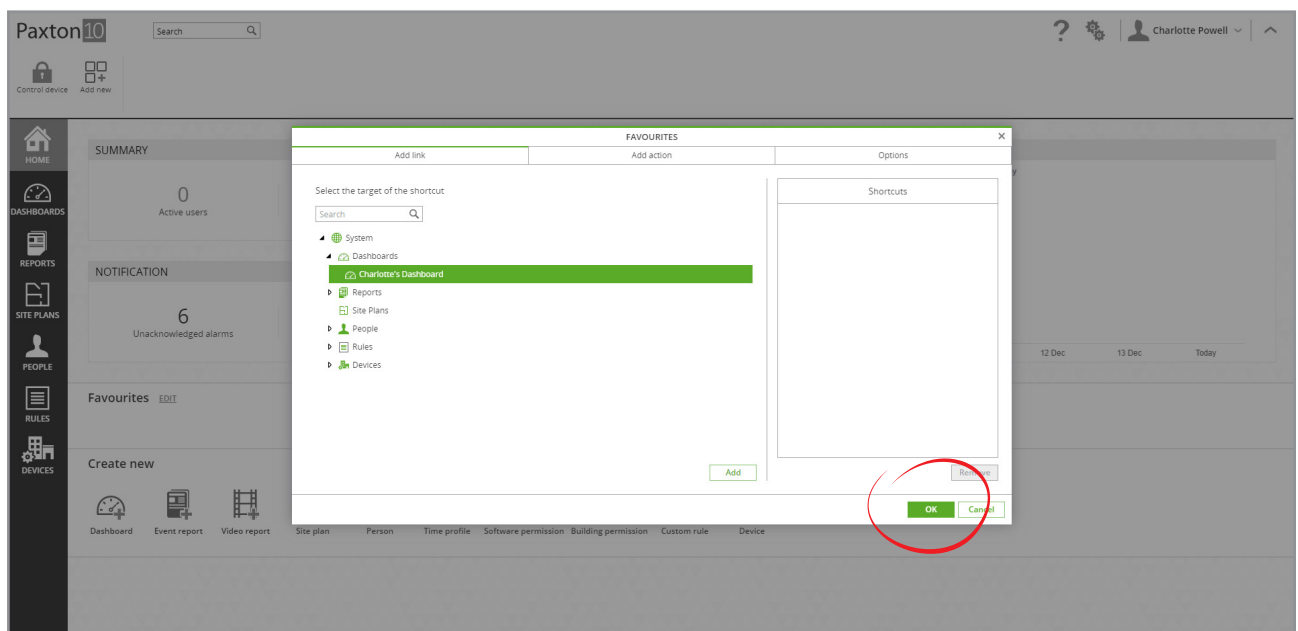
Once setup, a dashboard may be all you need to monitor and manage your Paxton10 system. You may even set a specific dashboard to load automatically on start-up further simplifying the user experience.

While in the 'Home' section:

1. Select 'Edit' next to your favourites

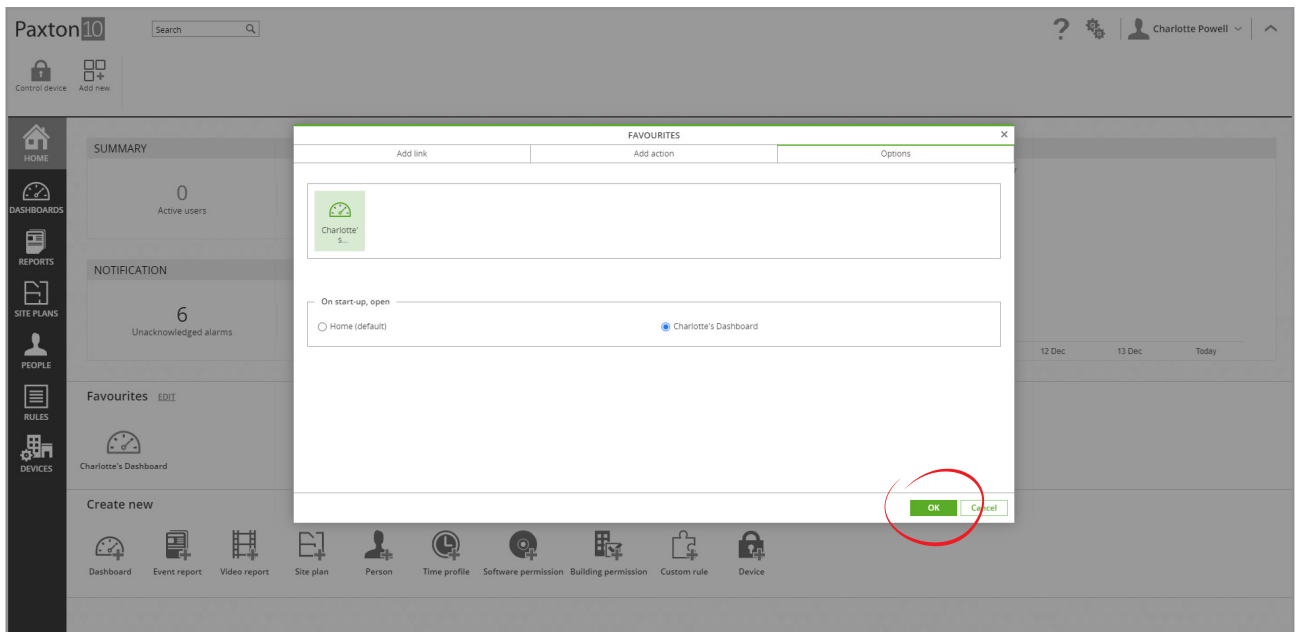


2. Locate the dashboard you wish to open on start-up, then click 'Add' to add it to your favourites



The dashboard will now appear as a shortcut on your Home page for ease of access.

3. Navigate to the 'Options' tab, then under 'On start-up, open' select the dashboard that should be opened



4. Click 'OK' to finish

On future login to Paxton10, the selected dashboard will be displayed for the current user.

Note: This is a user option, meaning each Paxton10 software user can have their own favourites, and open a page appropriate to them on start-up.

Frequently asked questions

Are dashboards available from my mobile phone?

They are, however you will get a scaled down version to suit your phone screen.

Why is the 'Add widget' button greyed out?

To add a widget to the dashboard, you must have software permission to be able to edit the dashboard, and there must be space available on the dashboard for the new widget to be placed.

Why can't I resize or move a widget?

To resize a widget, there must be space available in the direction you are trying to resize it.

To move a widget, save the widget so that it is not in its configuration view, then click and drag from the widgets name, or near the top of the widget. There must be space available that is equal or bigger than the current size of the widget for the widget to be placed.

Resize and move functionality may not be supported on some touch screen devices.

Who can see and use dashboards?

Dashboards work the same as other Paxton10 entities. Any user with 'Full' software permission to Dashboards or a group within Dashboards will be able to view, edit and create dashboards in that location. Any user with 'Read' software permission to Dashboards or a group within Dashboards are able to view and interact with existing dashboards in that location.

The content of each dashboard may additionally be filtered by the user's software permissions to any entities the dashboard displays. E.g. The business card widget may not display an individual if the viewing user doesn't have Events permission to that user.