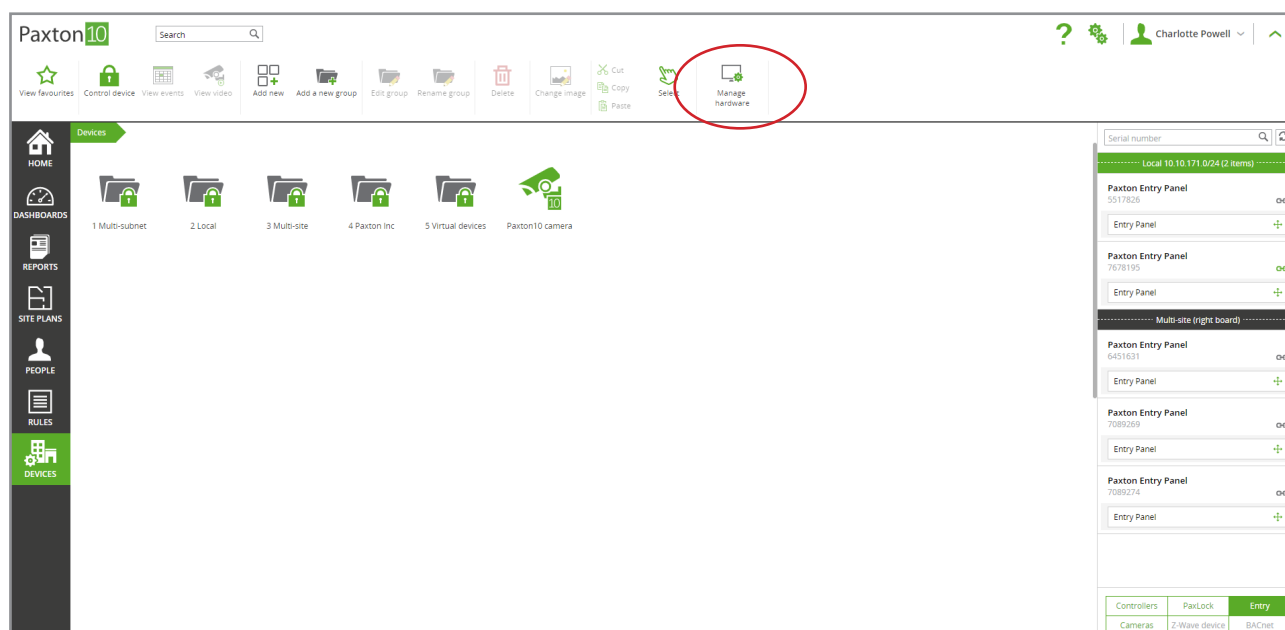


## Paxton10 Hardware Management

### Overview

Once hardware has been added and bound to a Paxton10 system, the hardware will appear in the 'Hardware Management' window.

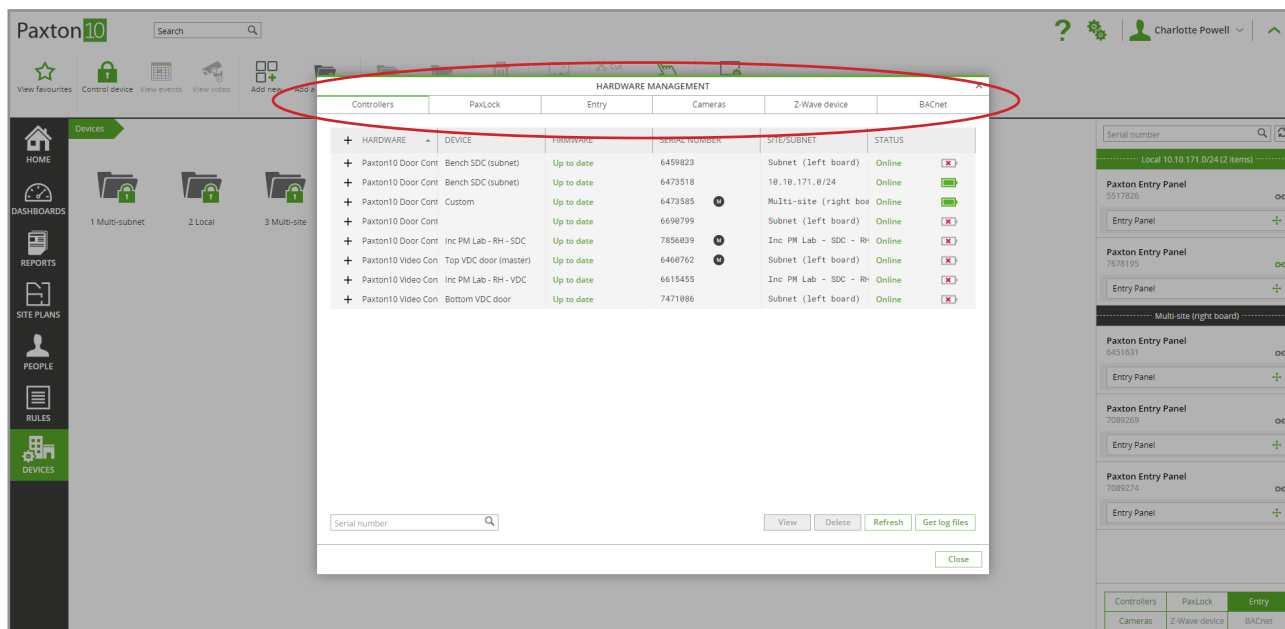
In Paxton10, navigate to 'Devices', then select 'Manage hardware' from the ribbon.



Hardware management will only be available to users with the appropriate software permissions.

### Hardware types

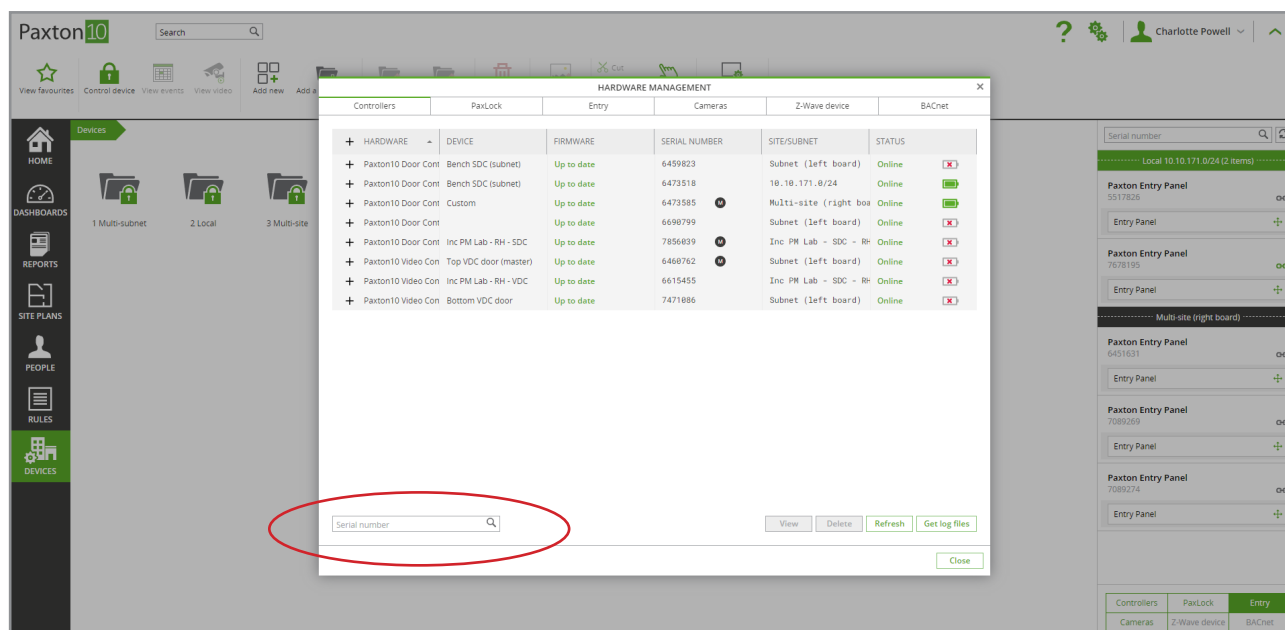
Hardware is categorised by its type. Hardware types include Paxton10 Controllers, Cameras, Paxton Entry, and others. Use the tabs at the top of the window to view hardware of the desired hardware type.



## Search

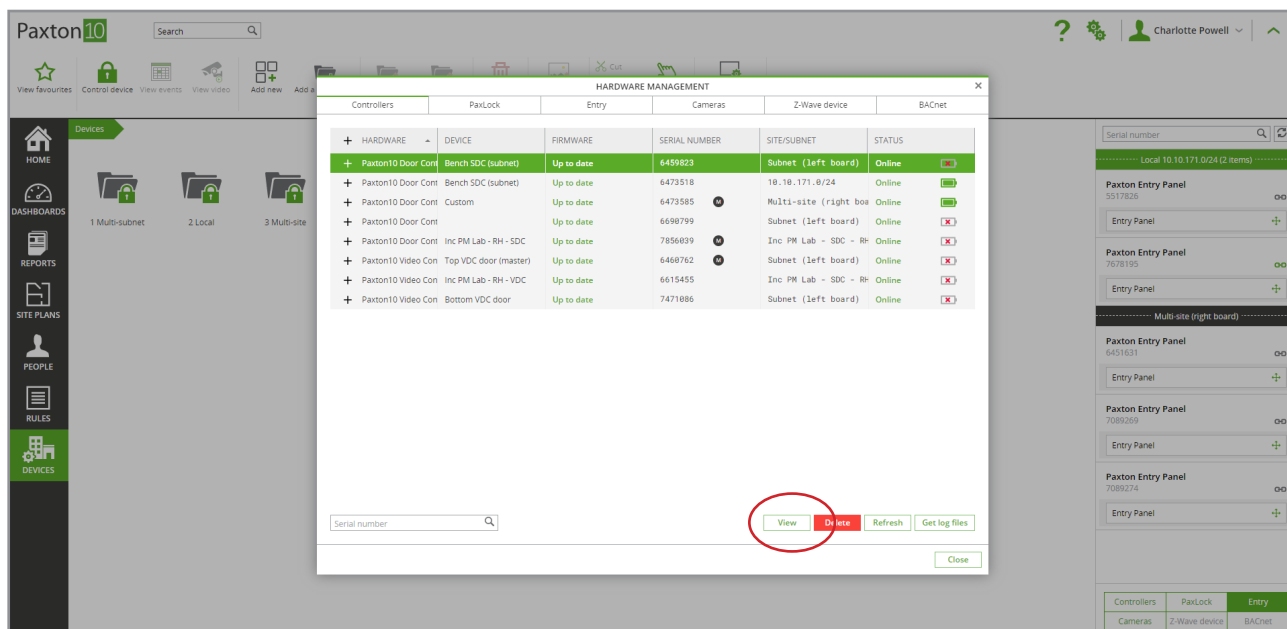
For larger systems, enter a serial number or IP address into the 'Search' control in the bottom left of the window to easily locate an item.

Search will only search within the currently selected hardware type.



## View

Use the 'View' button to view additional details about a selected item, such as its IP address, communication details, and device mapping.

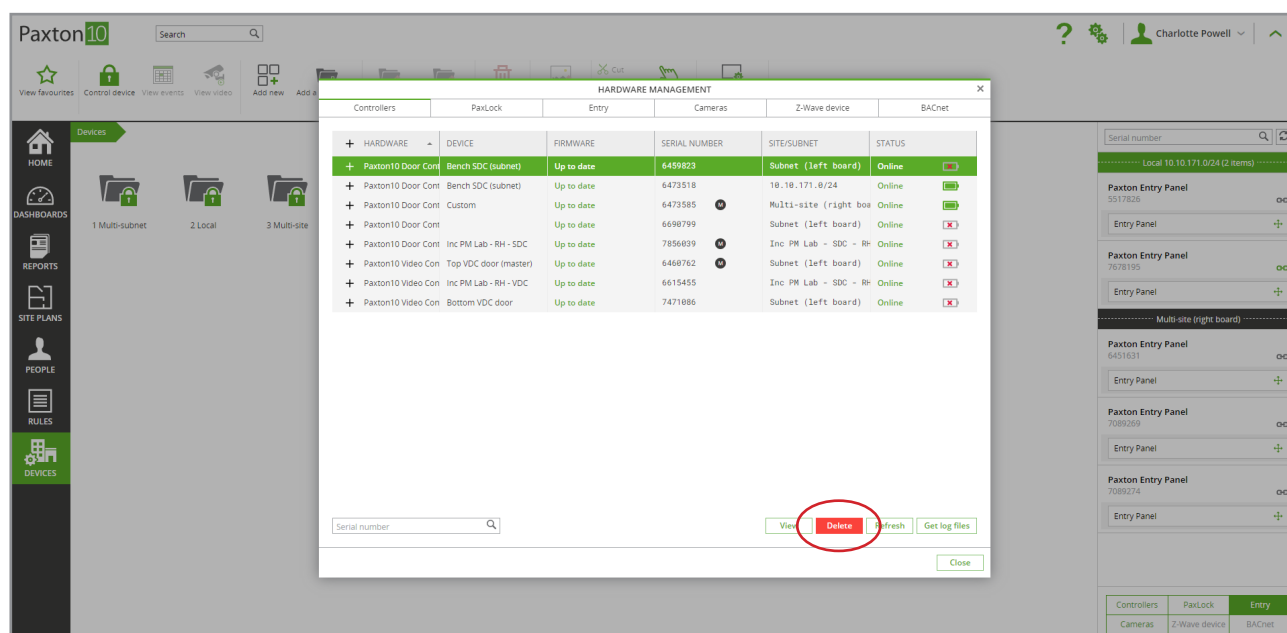


## Delete

When hardware is no longer required, use the '**Delete**' button to remove it from the system.

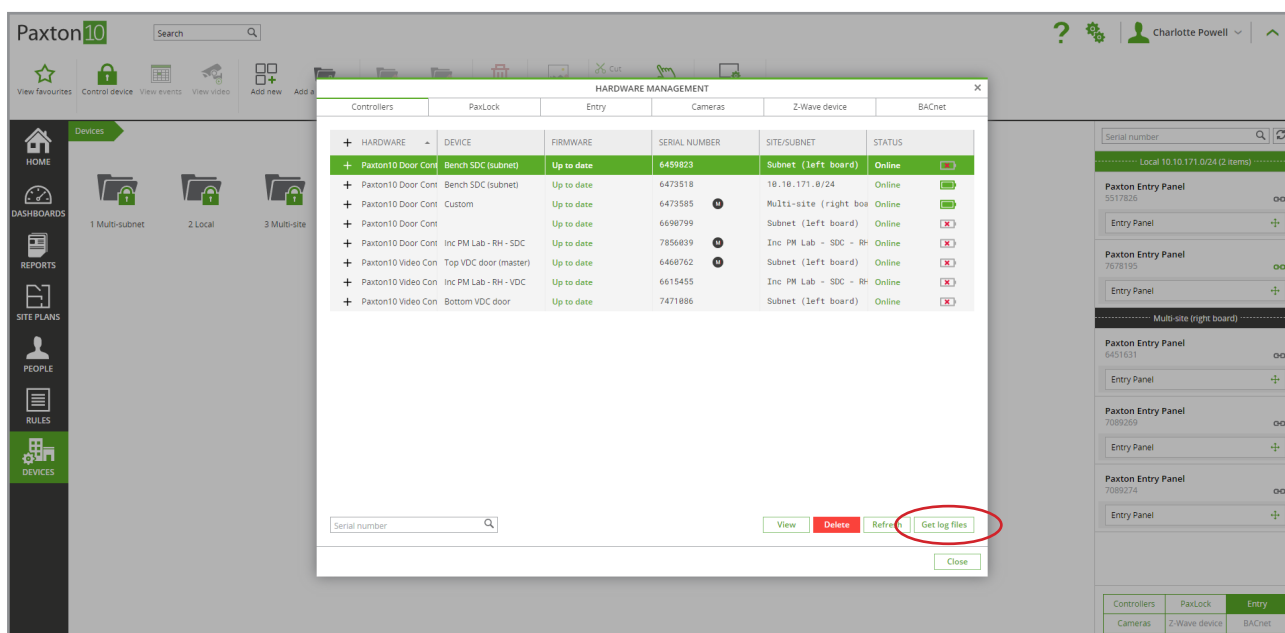
If the hardware is physically connected, such as an I/O connector, unplug it first before deleting.

Following deletion, a factory reset on the hardware may be required before it can be bound to another system.



## Get log files

If requested to by Paxton Support, use the 'Get log files' button to download system log files. These may help Paxton to diagnose and resolve any issues you're having.



## Frequently Asked Questions

### Why is there no hardware listed in the Hardware Management window?

Only bound hardware is listed in Hardware Management.

Once hardware is powered and plugged into your network, the hardware will appear in the Device Panel (to the right-hand side of the screen while in the 'Devices' section). Drag the hardware components onto a Paxton10 device, or select the grey link icon, to bind the hardware to your system.