

# Setting up a traffic light system using Net2 Occupancy Management

## Requirements

- Net2 Access control v6.04 or higher
- Requires Net2 Pro software
- System Engineer or Supervisor operator permissions
- Net2 I/O board that is online and connected to the Net2 server
- See [www.paxton.info/720](http://www.paxton.info/720) for the minimum PC specifications and compatibility statement



## Summary

When using the Net2 Occupancy Management feature you may wish to setup a traffic light system, helping to give a clear visual indication of when an area is either free to enter or at maximum occupancy. Virtual traffic lights can be setup using the Net2 software or traffic lights can be hardwired using an I/O board. Virtual traffic light reports are stored in the following location: C:\Net2 Access Control\Occupancy Management Reports\[AREA NAME].html

Both the Areas and Occupancy Management features must setup as outlined in the following application notes

AN1066-US - Installing an I/O board <[www.paxton.info/6365](http://www.paxton.info/6365)>

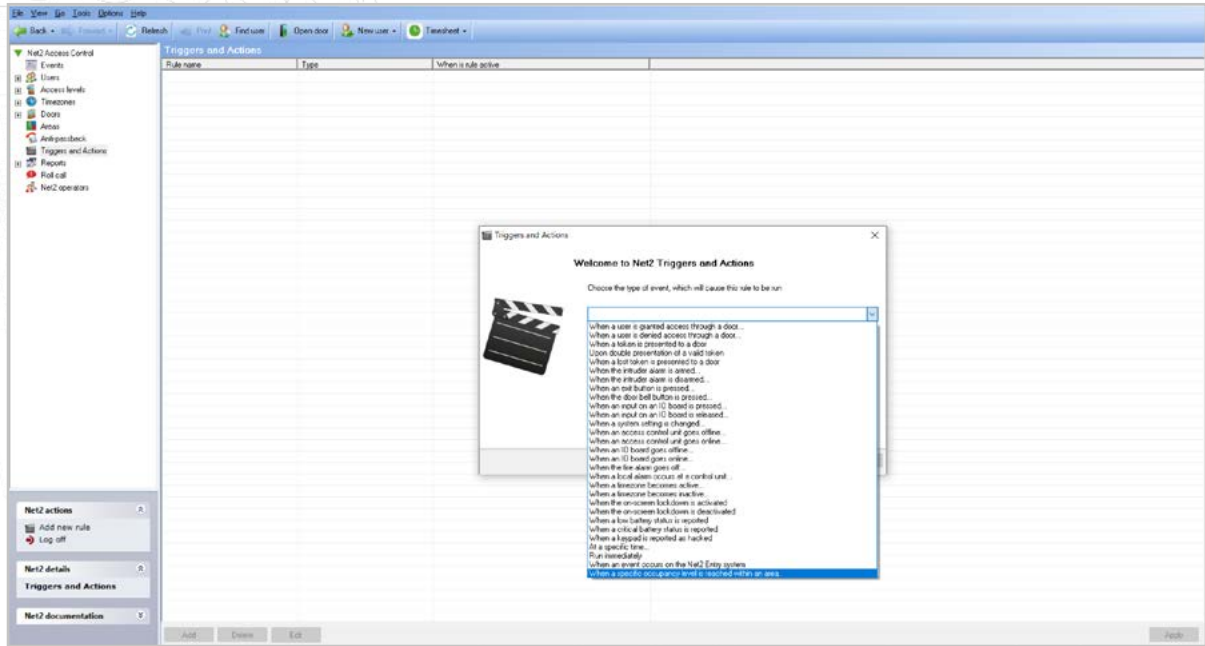
AN1023-US - Configuring areas and area groups <[www.paxton.info/6366](http://www.paxton.info/6366)>

APN-1197-US - Configuring Net2 Occupancy management <[www.paxton.info/6367](http://www.paxton.info/6367)>

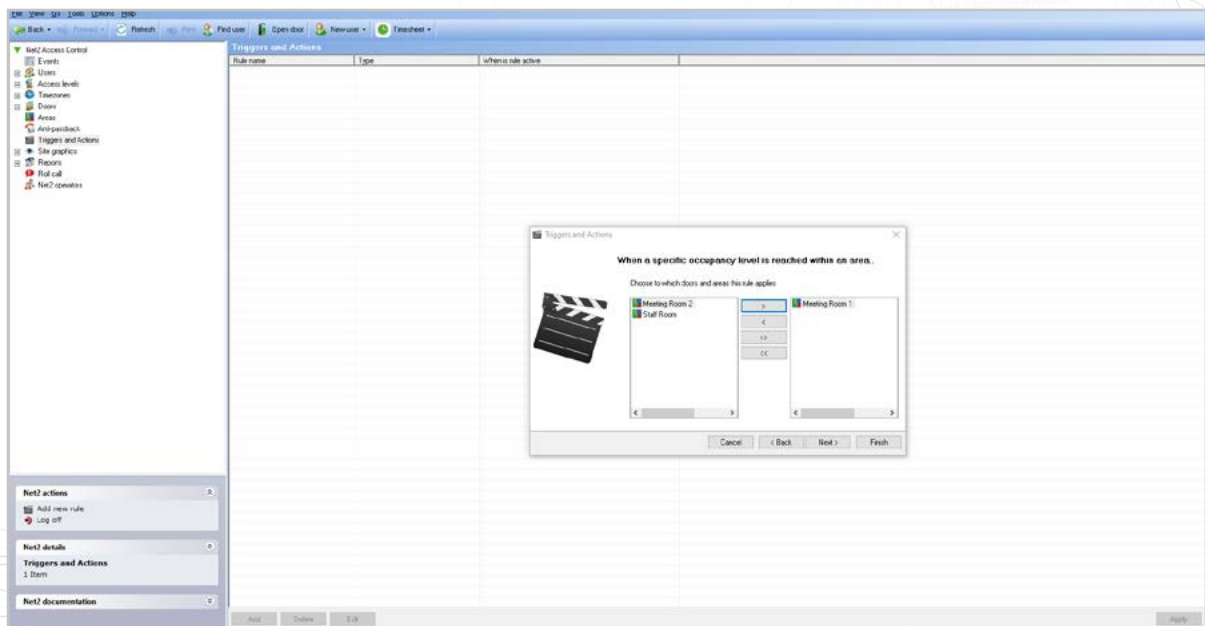
## Configuration within triggers and actions

For this example, we will be setting up rule based on an area with a maximum occupancy of 10 people. We will set the green light to remain on until the area reaches 10 people, at which point the green light will switch off and red light turn on.

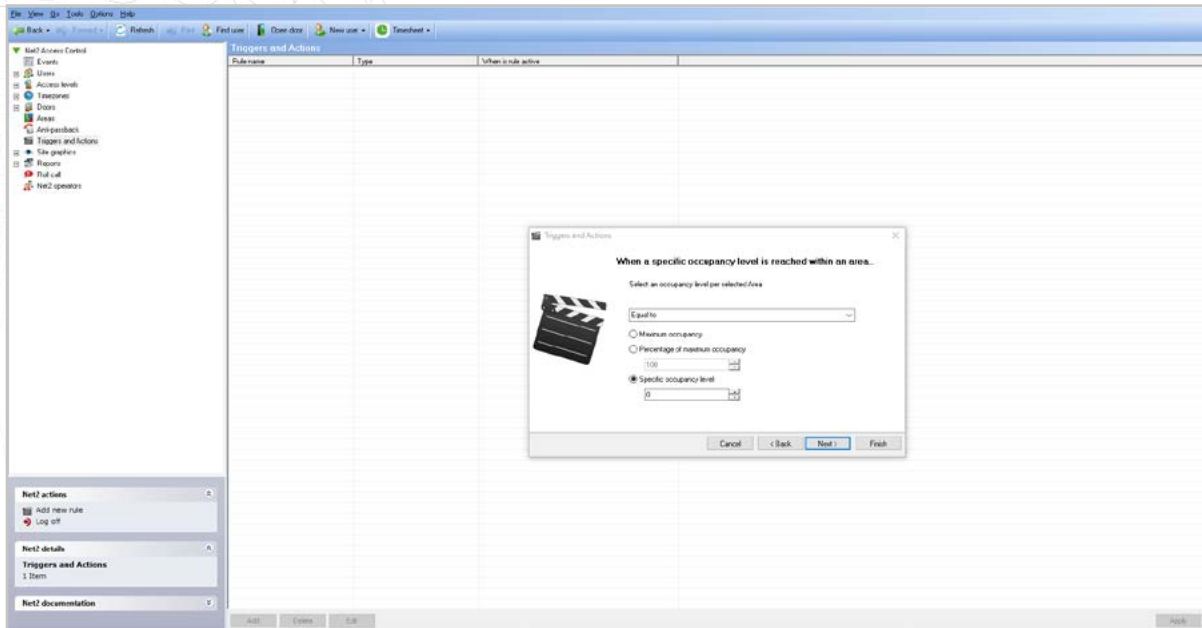
1. Open the Net2 software and select Triggers and Actions from the left tree menu
2. Select 'Add' followed by 'When a specific occupancy level is reached within an area'



3. Choose which area(s) you wish to add a traffic light system to



4. Choose the desired occupancy level to trigger the event



5. Select when the rule is active
6. Select whether you would like there to be a delay between the trigger and action
7. Check the '**Affect relay**' box
8. Select the relay you would like to change state upon this trigger and choose the desired action
9. Name your new rule and select finish
10. Repeat the above steps until you have the three rules setup as shown in the table below

Trigger	Action
Equal 0	Turn green relay on
Equal to 9	Turn green relay on Turn red relay off
Equal to or greater than 10	Turn off green relay off Turn red relay on

When using a traffic light system, you may also wish to have the Occupancy management html report on a screen in the area you are controlling occupancy.

This will allow users to see the occupancy of an area in addition to the traffic lights.

See APN-1197-US - Configuring Net2 Occupancy management <[www.paxton.info/6367](http://www.paxton.info/6367)> for more information.

**Note:** These Trigger & Actions rules will only function on reader actions, and not when manually removing people from an area via the Net2 software.