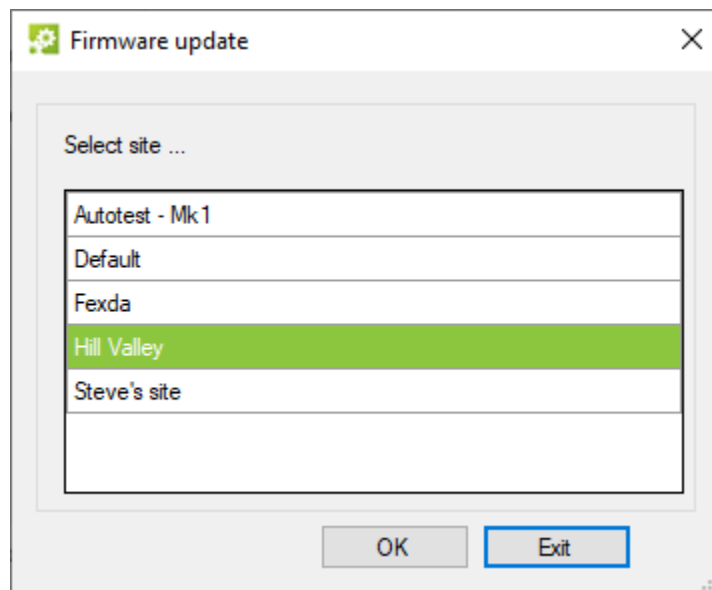


3 steps to install Entry v2.21

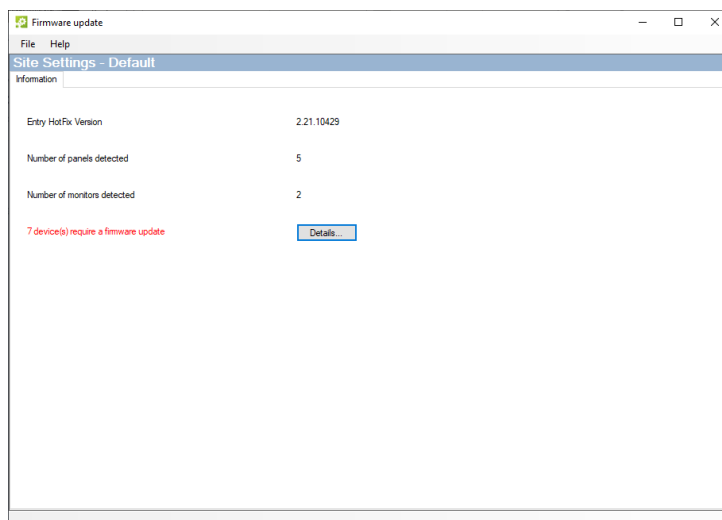
Download hotfix here: <http://www.paxton.info/6371>

Open this link on a PC that is connected to the same network as your Entry system. Once installed you will find the application here: C:\Program Files\Paxton Access\Entry Hotfix.

1. To start, open the application and select the site that you wish to upgrade and click **OK**

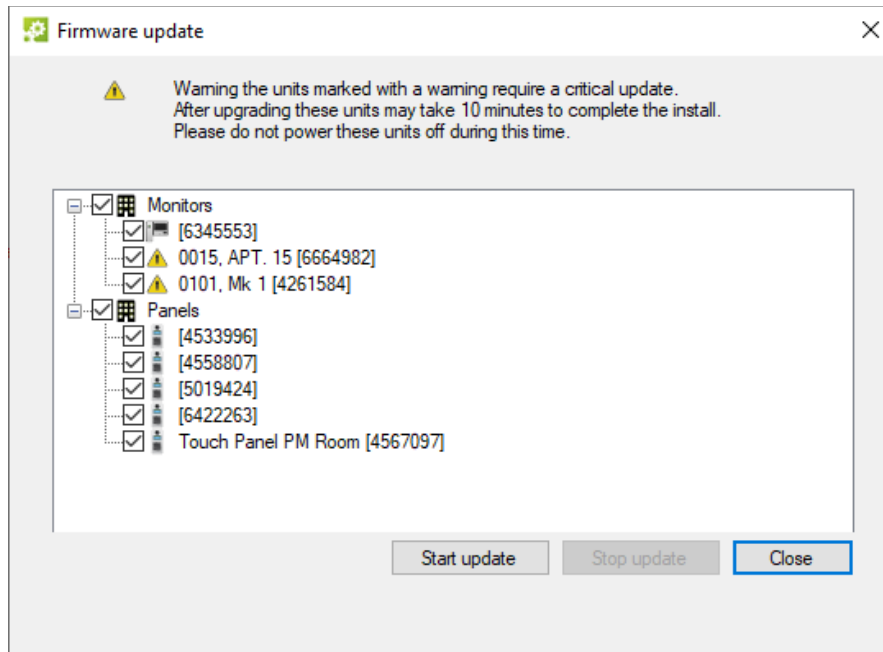


2. After selecting a site, the site settings window will be shown. Select **Details** to see the list of devices detected on your network that can be upgraded. **Note:** If a device is already running v2.21, it will not appear in this list.

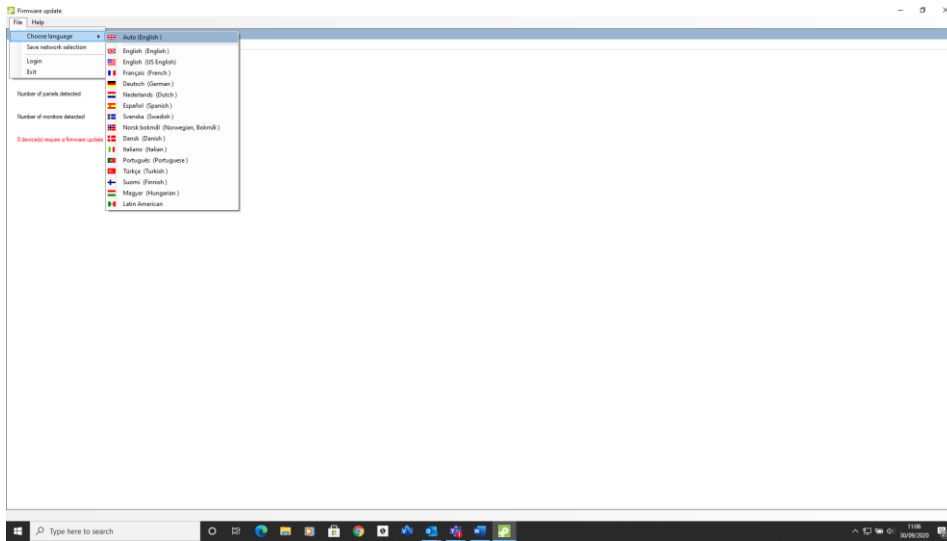


3. On the **Firmware update** screen, ensure the boxes are checked for all the devices you wish to upgrade and click **Start update**. You will remain on this screen and the progress/status of each device being upgraded will be displayed beside the device.

During the firmware update, each monitor will take up to 10 minutes to complete and will display the **critical update message** below. **Powering off a monitor during the update will cause it to no longer function.**



Additional information



- Select the **File** option from the toolbar
 - Use File / Language to select the language
 - Use File / Network Selection to save the network interface you are using.
 - Use File / Login to reselect the site that you want to update (useful when there are multiple sites on a single network)
 - Use File / Exit to quit the application