



## How to Save Video Footage to Network Attached Storage (NAS)

### Overview

Network attached storage (NAS) enables data to be stored safely at a central location on a local area network. This data can then be accessed easily by any authorised users that are connected to the network. Paxton10 provides the option to save video footage from Paxton10 cameras to a NAS system rather than to the camera's memory card. Paxton10 also enables video footage from 3rd party cameras to be saved in this way via the Paxton10 Video Controller.

### Supported Network Protocols

Paxton10 utilises CIFS/SMB – the Common Internet File system / Server Message Block protocol to share data with a NAS system. The protocol dialects supported differ for Paxton10 cameras and the Paxton10 Video Controller.

Paxton10 Video Controller supports:

Protocol Dialect
LANMAN 1.0
LANMAN 2.0
SMB 1.0 (also known as NT1)
SMB 2.0
SMB2_02 (sub-protocol)
SMB2_10 (sub-protocol)

Paxton10 camera supports:

Protocol Dialect
LANMAN 1.0
LANMAN 2.0
SMB 1.0 (also known as NT1)
SMB 2.0 (Paxton10 Pro and Core cameras only)

The Paxton10 Video Controller will attempt all protocol dialects up to and including SMB2\_10 to establish connection to your selected NAS system. Paxton10 Pro and Core cameras will attempt all protocols up to SMB 2.0.

## NAS System Settings

To establish a connection from the Paxton10 system to your NAS system, you may need to configure some additional settings on the NAS Drive.

### SMB Protocols:

Your NAS system must have the correct range for the SMB Protocols. The NAS System will need to be set to the minimum of SMB 1.0 and a maximum of SMB 2.0.

**Note:** If your NAS System uses LANMAN as the file service protocol, please refer to the Protocol Dialect chart above.

### Shared Folders:

A Shared Folder is a home directory on your NAS System where files and subfolders can be stored. Your Shared Folders must be set no larger than 2TBs.

The Paxton10 Camera and Video Controller will pre-allocate the storage on the NAS drive based on the Max Disk Space setting within Paxton10. Therefore, the total amount of Max Disk Space of the devices saving to the Shared Folder, must not exceed the total amount of that folder.

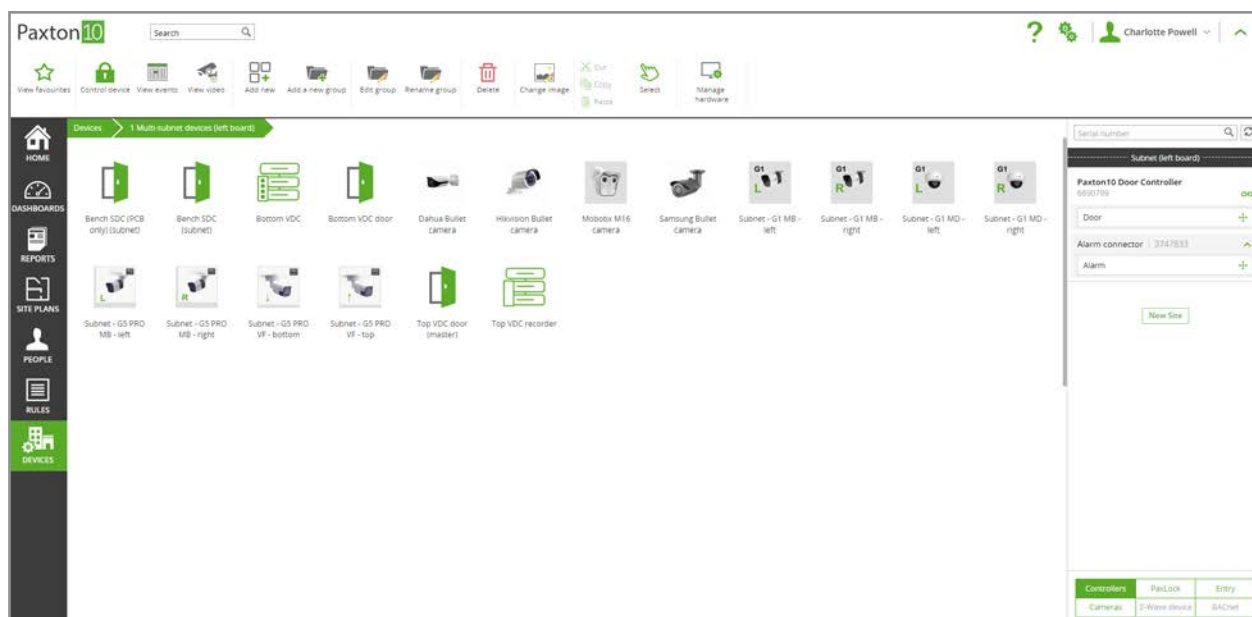
### User Permissions:

To map a Video Controller or Paxton10 Camera to the NAS System, you will need to have a user/login for the NAS input. This user will need to have full Read/Write permissions to the location where the Paxton10 system will be saving to.

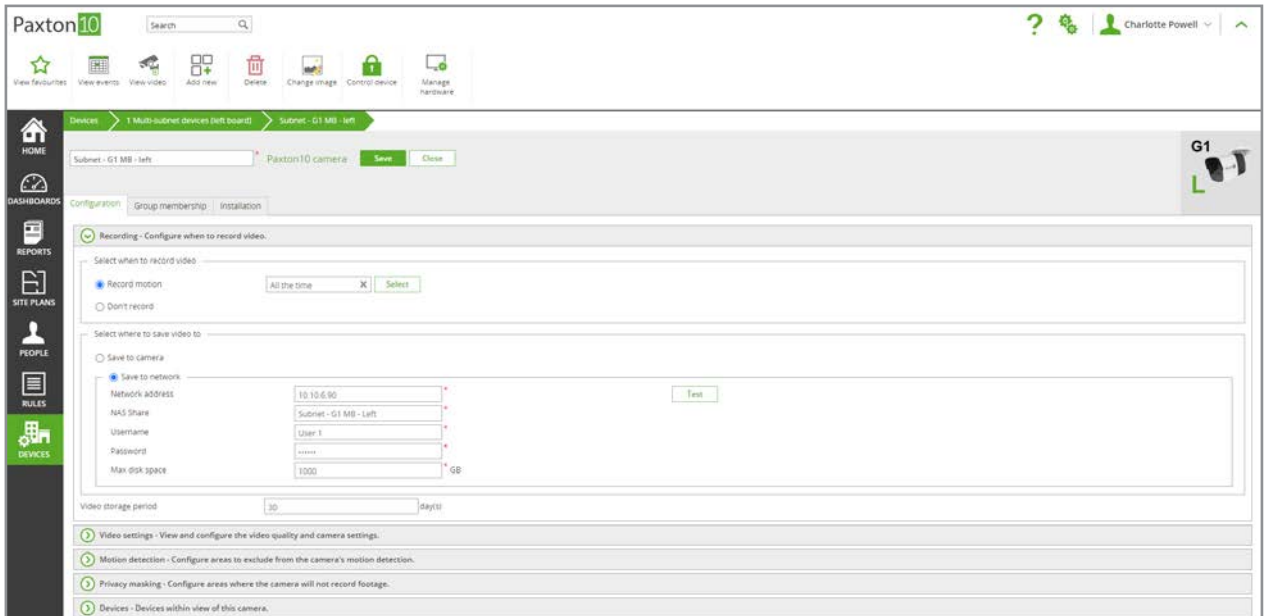
## Saving Paxton10 Camera Video Footage to a NAS System

For information on adding a camera to Paxton10, see APN-0034-AE - How to add a camera to Paxton10 < [www.paxton.info/5645](http://www.paxton.info/5645) >

1. In the Paxton10 software, navigate to 'Devices' and select a Paxton10 camera.

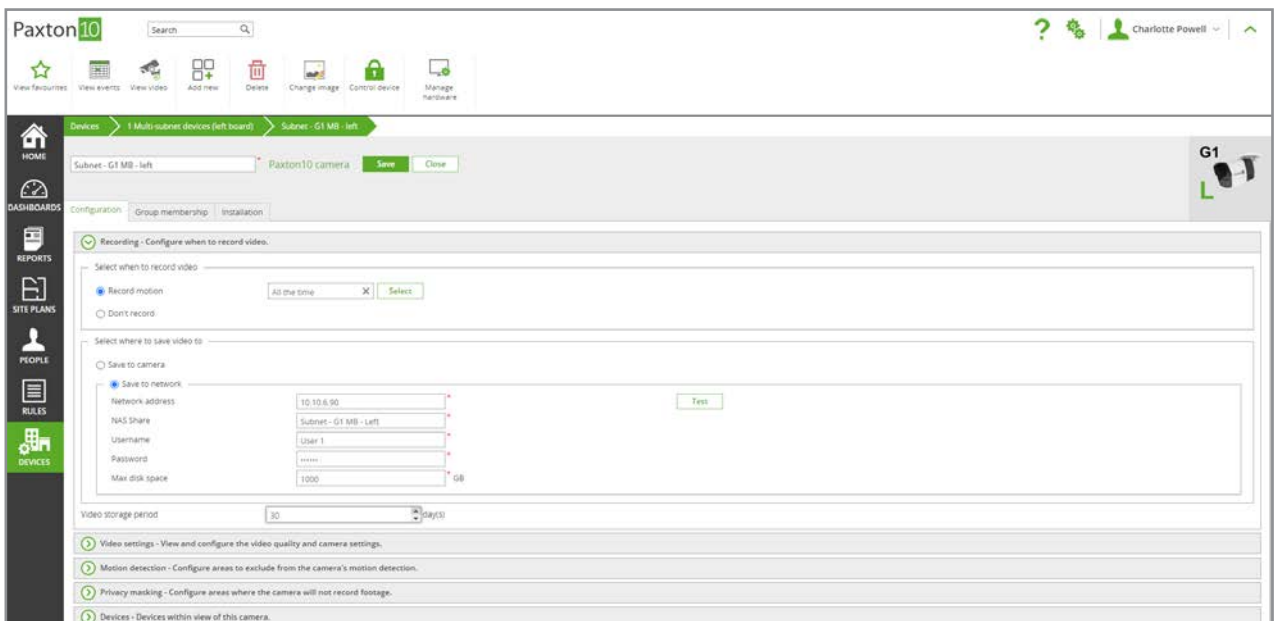


2. Select the 'Configuration' tab. In the 'Recording' section, select 'Save to network' and add your NAS system's details.



'Network address' refers to the NAS system's IP address and 'NAS Share' refers to the storage folder that you wish to save data to (the folder's exact name).

3. Test the connection by selecting 'Test'.
4. Choose the number of days that video footage should be stored for. The maximum is 90 days.

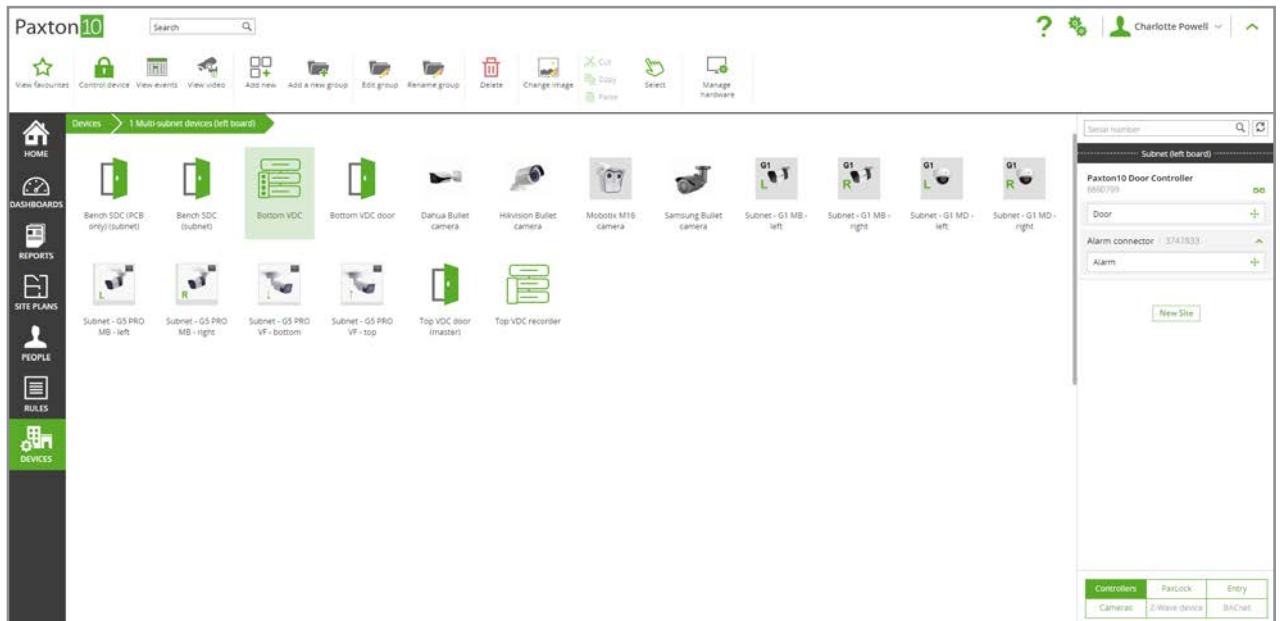


# Saving 3rd Party Camera Video Footage to a NAS System

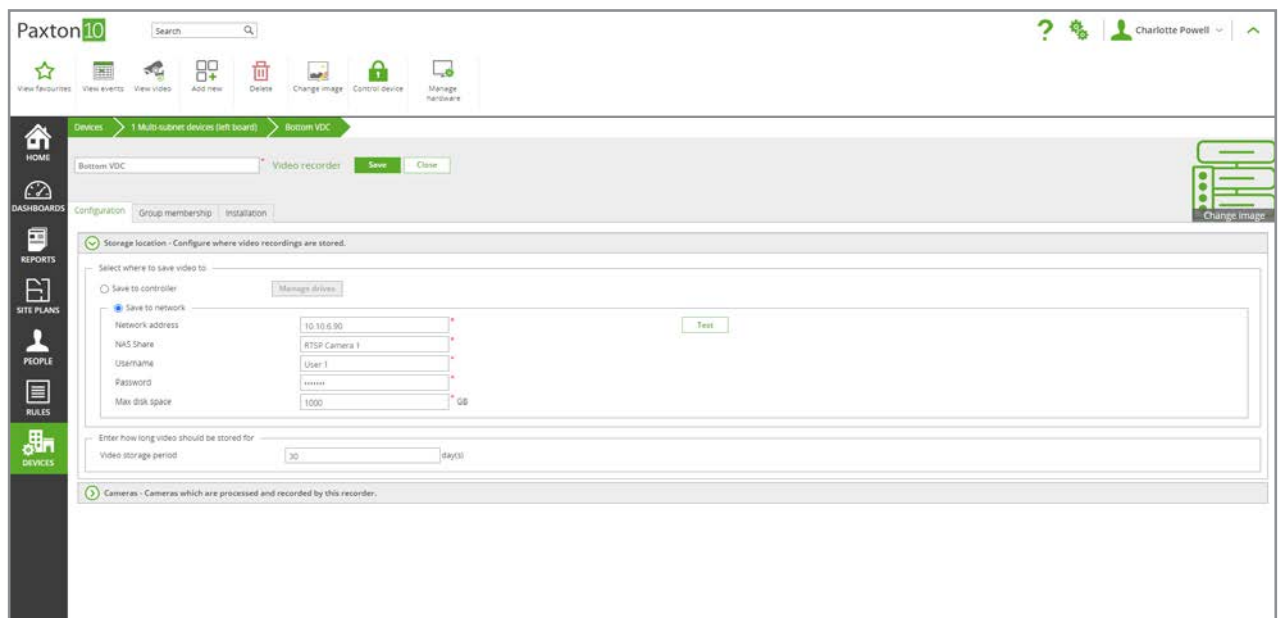
Third-party cameras must be associated with a video recorder (a Paxton10 Video Controller) for their video to be processed in Paxton10. For information on adding a 3rd party camera to Paxton10, see APN-0034-AE - How to add a camera to Paxton10 < [www.paxton.info/5645](http://www.paxton.info/5645) >

A dedicated folder should be set up within the NAS system for Paxton10 video footage.

1. In the Paxton10 software, navigate to 'Devices' and select the video recorder (Paxton10 Video Controller) that the 3rd party camera is associated with.



2. Select the 'configuration' tab. In the 'Storage location' section, select 'Save to network' and add your NAS system's details.



'Network address' refers to the NAS system's IP address and 'NAS Share' refers to the storage folder that you wish to save data to (the folder's exact name).

3. Test the connection by selecting 'Test'.
4. Choose the number of days that video footage should be stored for. The maximum is 90 days.

