

The Paxton Entry app

Open the door anytime, anywhere.

Offer your customers more flexibility
from Paxton's video door entry with
a brand-new mobile app.



Total convenience
Grant access from your phone



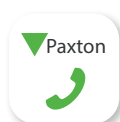
Earn recurring revenue
Low-cost monthly user licence



More opportunities
Ideal for new & existing installs



The Paxton Entry app is out now! ▶



Download the free
Paxton Entry app



The highly-anticipated Paxton Entry app is out now!

Users can answer the door and grant access to their building on a smartphone or tablet, from anywhere in the world!*

Benefits of the app:



Open the door to total convenience.

- Answer video calls from an Entry panel on a smartphone or tablet*
- Grant or deny access with a simple screen tap
- Use monitors and the app, or choose a monitor-free solution



Open the door to recurring revenue.

- Generate regular recurring revenue from your Paxton door entry installations
- Simple, low cost licence fee
- Exclusive discounted pricing available to Paxton Rewards partners



Open the door to more opportunities.

- Simple online management with the myPaxton portal
- Answer calls from multiple Entry systems from one device
- Fully compatible with existing Entry sites**

*Internet connection required for both the Entry panel and the smartphone/tablet.

**To use the Paxton Entry app your Entry panel will need the Entry Configuration Utility v4.0 or higher installed.

The Paxton Entry app offers an exciting additional benefit to Paxton installers. For the first time ever, you can generate regular recurring revenue from your Paxton Entry installations. Provide your customers with a flexible, low-cost, convenient solution and make additional revenue from the monthly licensing fee. The Paxton Entry app is chargeable per user, per month, with valuable discounted pricing available up to 40% off RRP via Paxton Rewards, your Paxton loyalty programme.

Paxton Rewards Partner Discount



10%



20%



30%

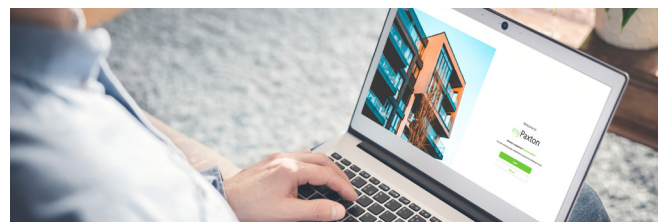


40%

The new app is fully compatible with existing Entry systems**. Offer your existing customers even more from their system, with no additional installation or disruption. Simply update the existing panels to the latest version of the Entry firmware and your customers can use the app the same day.

myPaxton

The user-friendly myPaxton online portal provides simple administration of the Paxton Entry app, including user and site setup, and payment management. Utilising your existing Registered Paxton Installer login credentials, your myPaxton account can be setup in minutes. Get help from Paxton's expert Support team directly from the online portal or by phone, with cloud diagnostics available when you need it.



The Paxton Entry app is available for your customers to download for free from the App Store and Google Play.



Please note, the app will only work for users who have been set up in your myPaxton portal and sent a 'New user registration' invitation via email.