

# Adding a Solo DoorTag

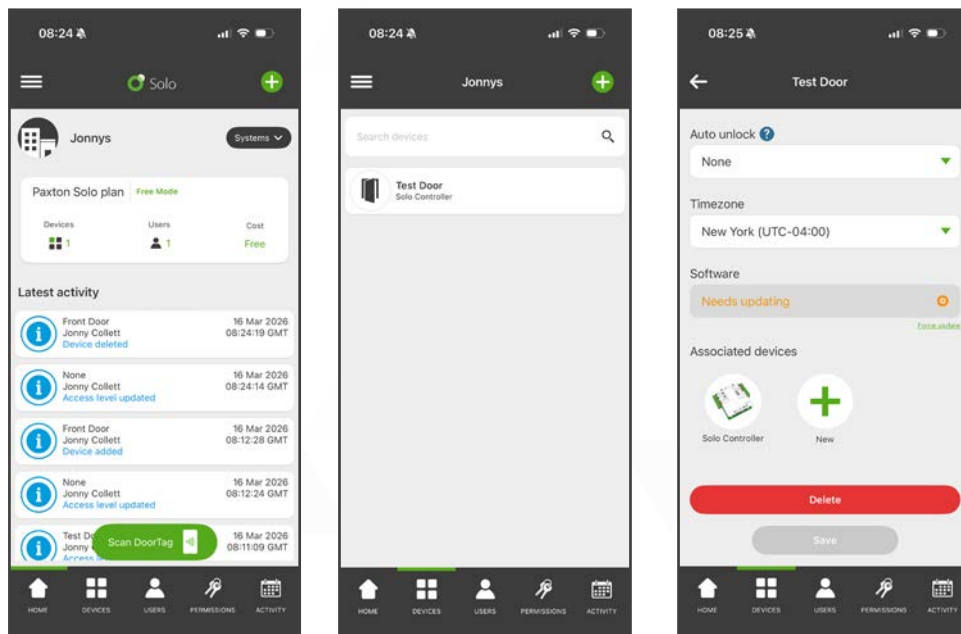
## Overview

The Solo – DoorTag replaces the reader in a traditional access control system. Simply present the DoorTag with a phone to gain access. Designed for maximum flexibility, the DoorTags are quick to install, require no power or wiring, and pair easily with your Solo system.

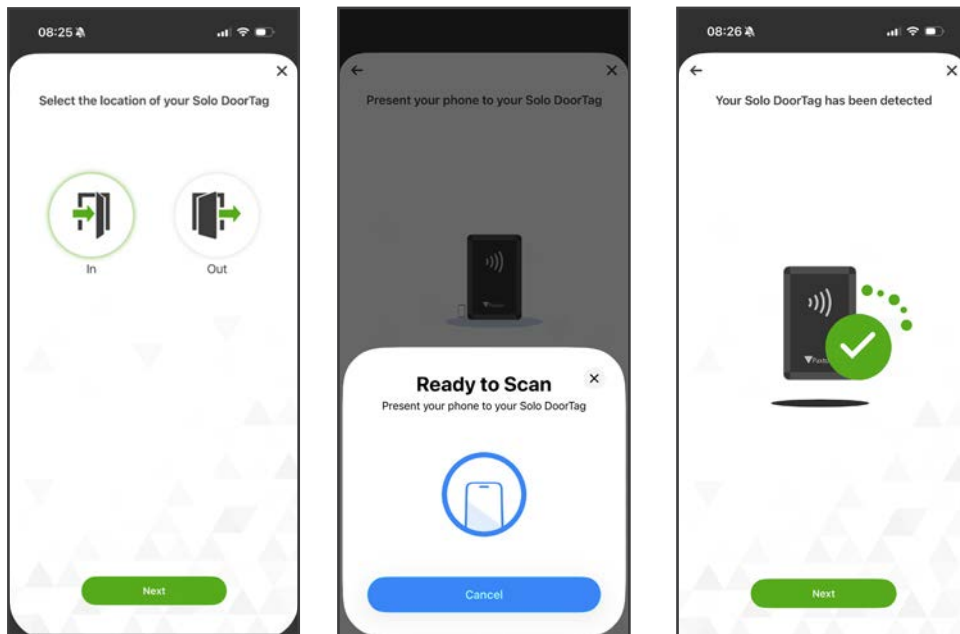
Each Solo - Controller supports up to four DoorTags, which must be mounted near the controller for optimal performance.

## How to add a DoorTag

1. From the home screen, navigate to 'Devices'
2. Select the device you want to add your DoorTag to.
3. Tap the green '+' icon in the top righthand corner



4. Then, tap 'New DoorTag'.
5. Select whether your DoorTag will be on the inside or outside of a door and tap 'Next'.
6. Present your phone to the DoorTag.



**Note:** iPhones usually have the NFC reader located at the top of the device. Android phones typically have the NFC reader near the centre.

7. Once your DoorTag has been detected, tap **'Save'**.

You have now successfully added your DoorTag.

8. Tap done if you are finished or tap **'Add another DoorTag'** to add up to an additional 3 Solo DoorTags to this controller.

You will be taken back into the device overview, your DoorTags will be available to view at the bottom of the screen. To save your changes, you must tap the **'Save'** button.